



Free Knitting Pattern

LION BRAND® 24/7 COTTON®

CATALINA DISHTOWEL

Pattern Number: M21054 TC



SKILL LEVEL – EASY

SIZES

About 13 1/2 x 12 1/2 in. (34.5 x 32 cm), after blocking

MATERIALS

- LION BRAND® 24/7 COTTON® (Art. #761)
#144 Magenta 1 ball (A)
#098 Ecru 1 ball (B)
- LION BRAND® knitting needles size 7 (4.5 mm)
- LION BRAND® double pointed needles size 7 (4.5 mm), set of 5
- LION BRAND® stitch markers
- LION BRAND® large-eyed blunt needle



GAUGE

19 sts + 29 rows = about 4 in. (10 cm) in St st (k on RS, p on WS), unblocked

BE SURE TO CHECK YOUR GAUGE.

NOTES

1. Dishtowel is worked back and forth in rows, following Charts.
2. First and last 4 sts are worked in 3 sts of Garter st (k every st) and 1 st of St st (k on RS, p on WS) for side borders. Charted pattern is worked between border sts.
3. Read RS rows of Charts from right to left and WS rows from left to right.
4. Hanging loop is made from I-cord worked directly onto corner of Dishtowel.
5. When you see 'as established' in the instructions, this means to continue in the current pattern st, lining up sts as in previous rows.



For thousands of free patterns, visit our website www.LionBrand.com

To order visit our website www.lionbrand.com or call: (800) 258-YARN (9276) any time!

Copyright ©1998-2021 Lion Brand Yarn Company, all rights reserved. No pattern or other material may be reproduced -- mechanically, electronically, or by any other means, including photocopying - without written permission of Lion Brand Yarn Company.

PLACEMAT

With straight needles and B, cast on 60 sts.

Knit 2 rows.

Chart 1

Row 1 (RS): K4 for border, * place marker (pm), work Row 1 of Chart 1; rep from * to last 4 sts, pm, k4 for border.

Row 2 (WS): K3, p1, * sm, work next row of Chart 1; rep from * to last marker, sm, p1, k3.

Row 3 (RS): K4, * sm, work next row of Chart 1; rep from * to last marker, sm, k4.

Rep Rows 2 and 3, keeping first and last 4 sts in border pattern as established and working the 26-st repeat of Chart 1 twice between markers, until all 14 rows of Chart 1 have been completed, end with a WS row as the last row you work.

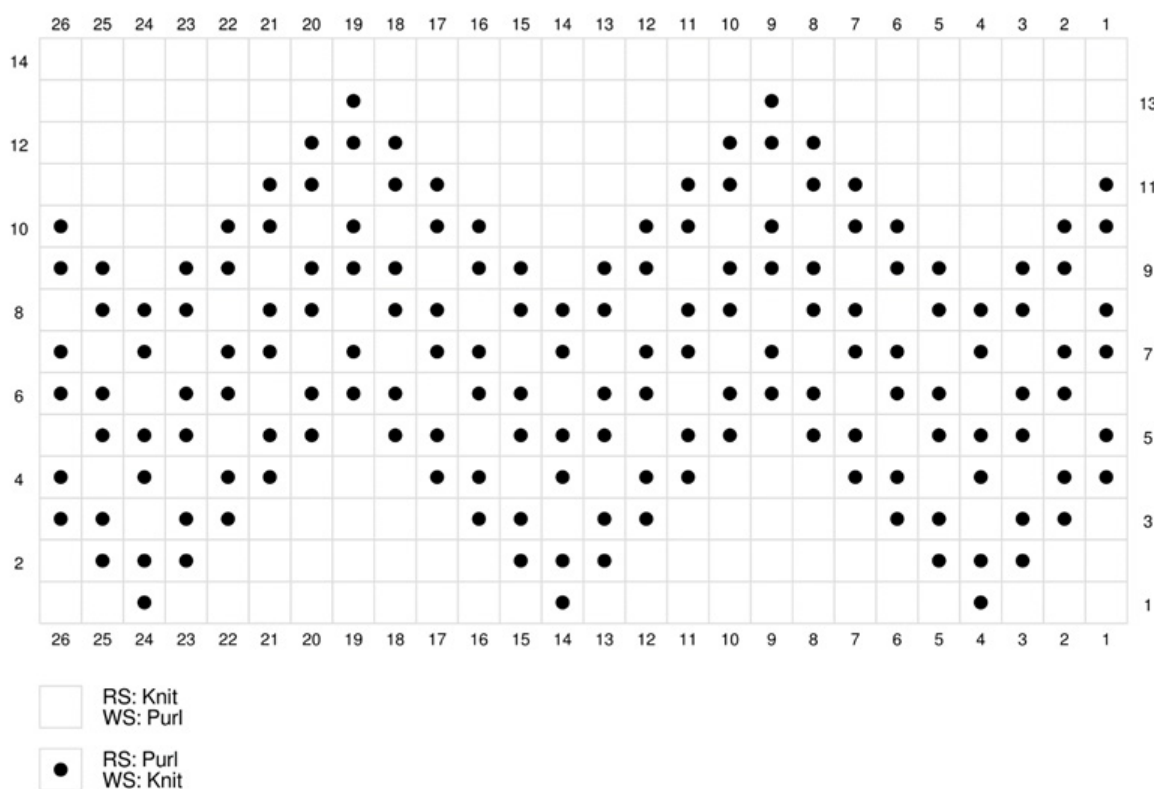


Chart 1

Chart 2

Change to A.

Knit 2 rows, slipping markers as you come to them.

Row 1 (RS): K4, * sm work Row 1 of Chart 2; rep from * to last marker, sm, k4.

Row 2 (WS): K3, p1, * sm, work next row of Chart 2; rep from * to last marker, sm, p1, k3.

Row 3 (RS): K4, * sm, work next row of Chart 2; rep from * to last marker, sm, k4.

Rep Rows 2 and 3, keeping first and last 4 sts in border pattern as established and working the 26-st repeat of Chart 2 twice between markers, until all 38 rows of Chart 2 have been completed TWICE for a total of 76 Chart 2 rows, end with a WS row as the last row you work. Remove markers.

Knit 2 rows.

Bind off until only 3 sts rem. Place the 3 sts onto a double pointed needle. Do not cut yarn.

For thousands of free patterns, visit our website www.LionBrand.com

To order visit our website www.lionbrand.com or call: (800) 258-YARN (9276) any time!

Copyright ©1998-2021 Lion Brand Yarn Company, all rights reserved. No pattern or other material may be reproduced -- mechanically, electronically, or by any other means, including photocopying - without written permission of Lion Brand Yarn Company.

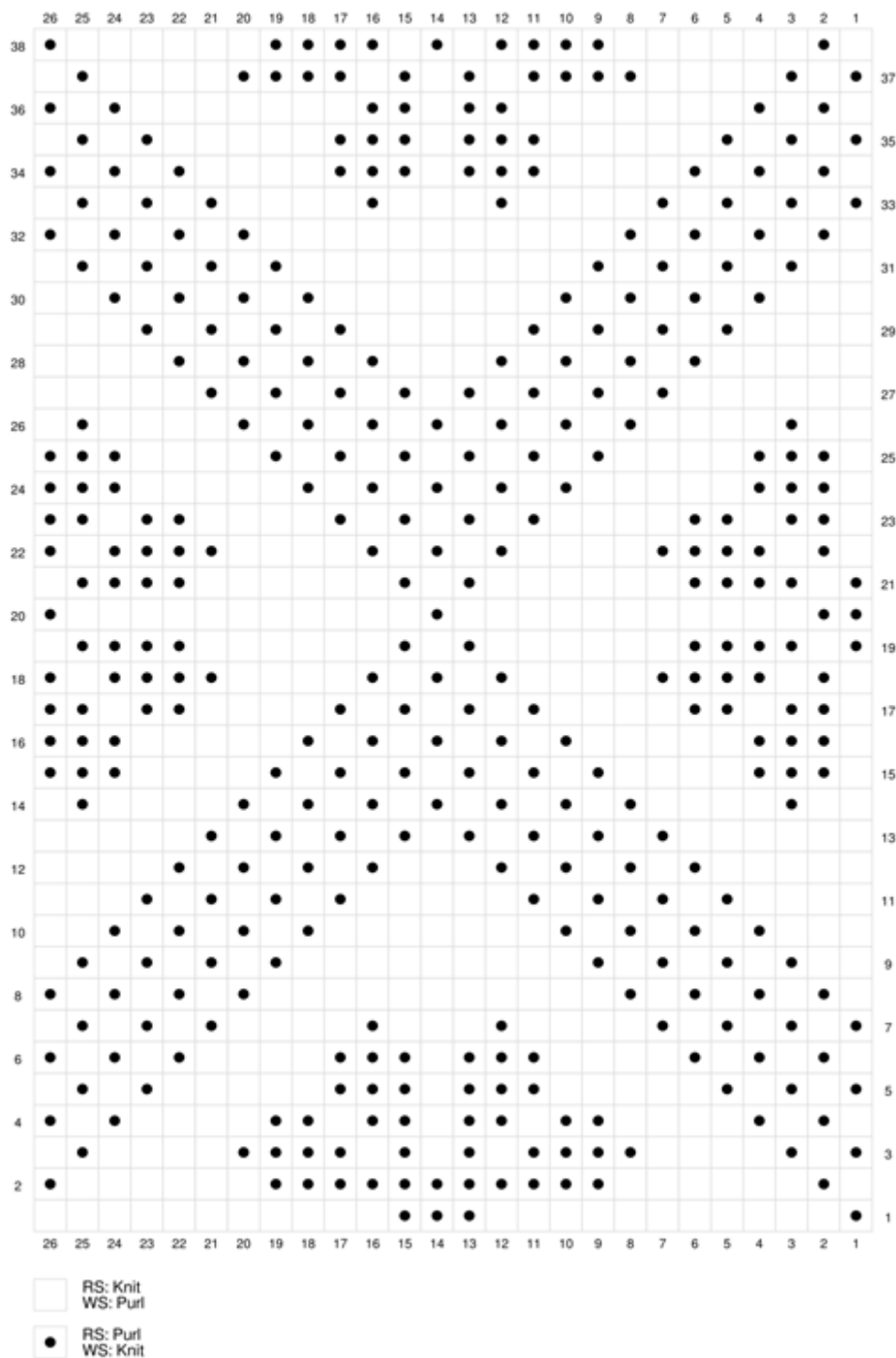


Chart 2

Hanging Loop

Make I-cord as follows: Working with a second double pointed needle, knit the 3 sts from the first double pointed needle. Do not turn work. *Slide sts to other end of needle and knit them, pulling yarn tightly across the back of the work, (do not turn work); rep from * until cord measures about 3 1/2 in. (9 cm) long.

Next Row: K1, k2tog, pass knit st over k2tog and off right needle.

Fasten off, leaving a long yarn tail. Fold cord in half and use yarn tail to sew end of loop to corner of Dishtowel.

FINISHING

Weave in ends.

Blocking

Soak Dishtowel in lukewarm water with a small amount of wool wash for about 15 minutes, then roll gently in a towel to remove as much water as possible. Lay Dishtowel onto a dry towel, shape gently to finished measurements and allow to dry.

ABBREVIATIONS

k = knit

k2tog = knit 2 stitches together

p = purl

rem = remain(ing)

rep = repeat

RS = right side

st(s) = stitch(es)

WS = wrong side

Every effort has been made to produce accurate and complete instructions. We cannot be responsible for variance of individual knitters or crocheters, human error, or typographical mistakes.

©2021 Lion Brand Yarn Company, all rights reserved.

For thousands of free patterns, visit our website www.LionBrand.com

To order visit our website www.lionbrand.com or call: (800) 258-YARN (9276) any time!

Copyright ©1998-2021 Lion Brand Yarn Company, all rights reserved. No pattern or other material may be reproduced -- mechanically, electronically, or by any other means, including photocopying - without written permission of Lion Brand Yarn Company.