

## PowerHub E | TA-7531US



## Table of Contents

<b>2</b>	Products Covered By This Installation Guide
<b>2</b>	PowerHub E Part Numbers
<b>3</b>	Important Safety Instructions
<b>3</b>	Approval Information
<b>4</b>	What Is Included In The Box
<b>5</b>	Preparation For Installation
<b>6</b>	Installation
<b>7</b>	Additional Information
<b>8</b>	Warranty
<b>9</b>	Contact Details

## Products Covered By This Installation Guide

The TeleAdapt PowerHub E (TA-7531US) is a furniture power distribution unit which provides two tamper-resistant US NEMA receptacles and 2 USB-A charging sockets.

The use of a tamper-resistant receptacles gives industry leading protection against the accidental insertion of foreign objects into the power sockets and provides enhanced safety for all users.

The TA-7531US is provided with 2 trims (Slimline black and Slimline metallic) and a duplex power plug so the number of available outlets in a room is not reduced when it is fitted.

Installation is simple as the TA-7531US only requires a single connection to a US 120V/60Hz outlet, so fitting can be undertaken by anybody who has a screwdriver and does not require a qualified electrician.

### PowerHub E Part Numbers

TA-7531US-USN2      PowerHub E for USA, 2 metre power cable.

## Important Safety Instructions

- Read these instructions carefully before attempting any installation. Follow all instructions and heed all warnings. These instructions should be kept for future reference.
- This equipment must be securely attached to furniture in strict accordance with these installation instructions.
- This equipment is designed for indoor use only.
- Only use with attachments and accessories as specified by the manufacturer.
- The mains plug used to disconnect this equipment from its power source must be readily accessible at all times.
- Ensure the power cord is uncoiled before installation.
- Protect the power cord from being walked on or pinched particularly at plugs, convenience receptacles and the point where they exit from the equipment.
- The power cord must be plugged into a mains socket outlet with protective earthing.
- Clean only with a dry cloth.
- Refer all servicing to qualified service personnel. Servicing is required when the equipment has been damaged in any way, for example if the power supply plug or cord is damaged, liquid has been spilled or objects have fallen into the equipment, the equipment has been exposed to rain or moisture, does not operate normally or has been dropped or damaged.
- Unplug this equipment during lightning storms or when unused for long periods of time.
  
- Do NOT defeat the safety purpose of the grounded plug. If the provided plug does not fit into your outlet consult a qualified electrician to replace the obsolete outlet.
- Do NOT install or use this equipment near water.
- Do NOT expose this apparatus to rain or moisture.
- Do NOT expose to dripping or splashing. No objects filled with liquid such as vases shall be placed on the equipment.
- Do NOT install near any heat sources such as radiators, convection heaters or other apparatus such as amplifiers that produce heat.
- Do NOT exceed the maximum load of 10 amps.

### Approval Information

The TA-7531US conforms to UL962a, UL1310 and CSA 22.2. The NEMA outlet is UL listed and conforms to UL 498. The internal PSU conforms to FCC Part 15b.

## What Is Included In The Box

- 1 x PowerHub E with Power Cord and Duplex Plug
- 1 x Black trim
- 1 x Black Metallic trim
- 4 x Fixing screws
- 1 x Installation Guide

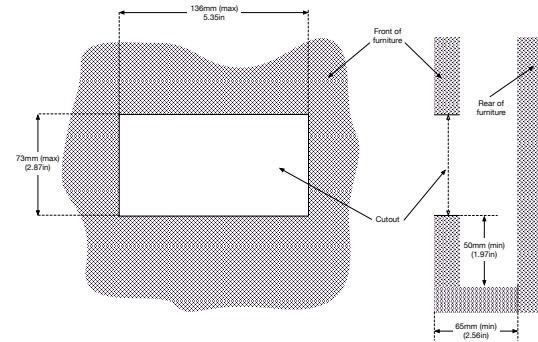
## Preparation For Installation

The PowerHub E is designed to be installed in furniture.

Ensure the location chosen for the equipment complies with the requirements of the "Important Safety Instructions".

A cutout will need to be made in the furniture, cutout dimensions are given shown below. After the cutout is prepared the only tools you will need are a medium sized cross head screwdriver.

The PowerHub E requires power from a standard 3-pin US 120V outlet.



## Installation

Before starting installation make sure you have read and understood the "Important Safety instructions".

### Step 1

Confirm the furniture cutout dimension to accommodate the PowerHub E is within the limits shown below. Note that in addition to the minimum depth requirement of 60mm (2.36in) there should also be at least 50mm (1.97in) clearance below the unit to allow cabling to exit cleanly.

### Step 2

Remove the PowerHub E, trims and screws from the box.

### Step 3

Thread the rear power cable through the cutout in the furniture.

### Step 4

Lean the PowerHub E on the bottom of the cutout in the furniture and push it into the cutout by rotating it slightly

### Step 5

Fasten the 4 cross head screws to fix the PowerHub in the furniture.

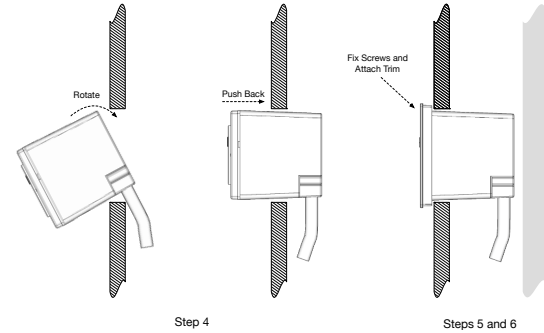
### Step 6

Align the selected trim (black or metallic) with the PowerHub E ensuring that the 2 small cutouts on the trim are on the bottom. Press firmly and evenly to clip the trim into place.

### Step 7

Finally insert the plug on the end of the rear power cable into an appropriate 120V mains outlet.

Installation is now complete.



Fitting PowerHub E through the cutout

## Additional Information

### USB Charging

The PowerHub E provides 2 USB-A sockets for device charging. The left hand socket charges at 5V/2.4A and the right hand socket charges at 5V/1A.

### Safety Cutout

In the event of an overload the safety cutout may trip. In this case unplug any devices and wait 5 minutes. The cutout (situated on the front of the PowerHub) can then be manually reset.

### Removing the PowerHub E from Furniture

If you need to remove the equipment for any reason, first ensure the equipment is disconnected from the mains power source.

1. Unplug the PowerHub E from the mains supply.
2. Use a medium flat blade screwdriver to release the 2 clips on the bottom of the trim.
3. The trim can now be gently removed by hand. Be careful not to bend the trim excessively or it may deform or break.
4. Unscrew the 4 cross head screws and carefully withdraw the unit from the furniture being careful not to damage any cables.

### **Warranty**

Please see TeleAdapt "Sales Terms & Conditions" which are available at <http://www.teleadapt.com/teleadapt/sales-terms-conditions.html>

### **Contact Details**

#### Americas

TeleAdapt Inc  
1315 Greg Street  
Suite 110  
Sparks  
NV 89431  
USA  
Tel: +1 775 355 8585

#### Asia

TeleAdapt (Hong Kong) Limited  
Hong Kong  
Kowloon  
Tel: +852 2155 1383  
Email: [hk@teleadapt.com](mailto:hk@teleadapt.com)

Visit our website at: [www.teleadapt.com](http://www.teleadapt.com)

PowerHub E US Installation Guide\_06/2023\_REV-1.