

Different configurations

FlashRunner LAN 2.0 NXG hardware capability allows the user to choose the configuration from 1 to 4 independent and parallel channels, according to the production project. It is possible to purchase FlashRunner LAN 2.0 NXG with 1 enabled channel, and add up to 4 channels through a simple online remote session. In this way, the cost of the solution will adjust to the production needs, optimizing the programmer's efficiency also in respect of the economic investment.

A new friendly interactive gui (Graphic User Interface)

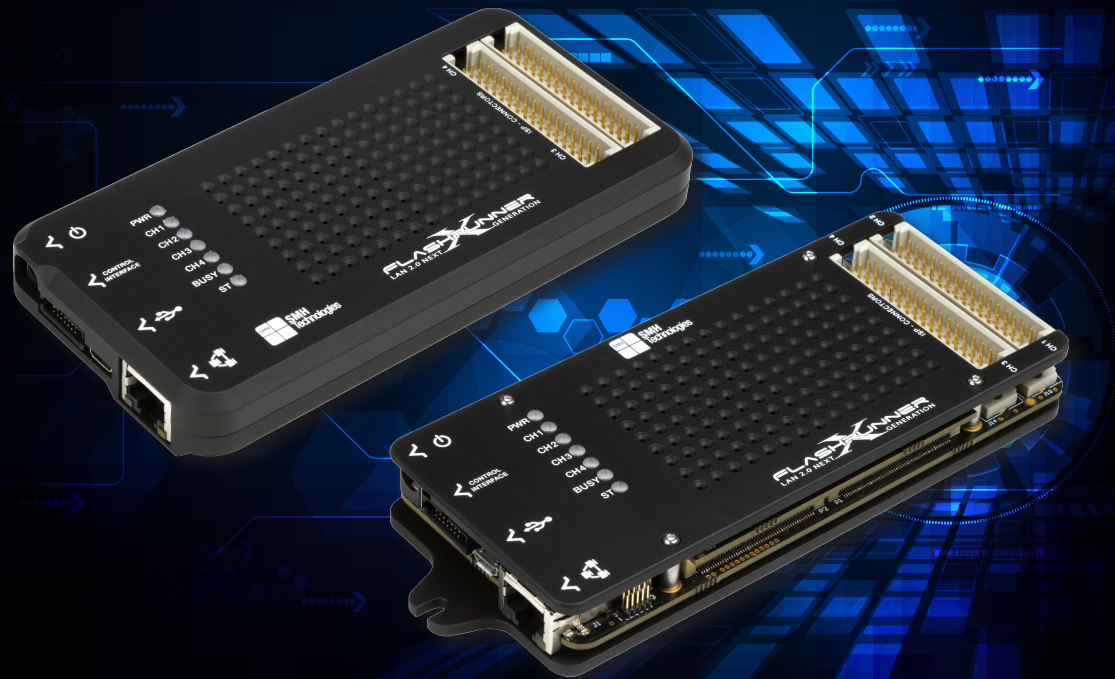
The new GUI interface cuts off overall configuration efforts, guiding the customer in creating a working project in few mouse clicks and detecting mismatches between the target device and customer's firmware, as well as power supply setup.

Related services

FlashRunner LAN 2.0 NXG special features allow the programmer to share its channels in order to program big-size memories, such as eMMC, parallel NOR and NAND memories, by employing the required programming ISP lines.

FLASHRUNNER

2.0 LAN NEXT GENERATION



Technical Support

Purchasing a product is only part of solving your programming needs. We know that you must count on professional help should the need arise. FlashRunner is sold and supported by a worldwide network of resellers and system integrators, comes

with a three-year warranty and is backed up by knowledgeable and fast technical support. Additionally, our engineers are available for custom designs and validation reports, to help you start up your projects and providing you with accurate programming flow certifications.

DC11008

Device support

Our supported device list is updated daily and counts more than 10.000+ items. However, if you still can't find the device you are looking for we offer you a development service, which meets your needs. Every request will be handled in order to meet your production deadlines in time.

FlashRunner LAN2.0 NXG programmer is fully equipped with:

- Documentation
- Quick start guide
- 3-years warranty certification

- Programmer

FlashRunner LAN2.0 NXG is available in two different aluminium cases:
CC - Closed Case (two aluminium shells completely cover the programmer)
OF - Open Frame (two aluminium layers include the programmer and reduce the overall dimensions)

In both configurations, the programmer is provided with:

- Power supply
- ISP flat cable (30cm) and related header
- Control interface flat cable (15cm) and related header
- LAN connection cable
- USB connection cable

Related Relay Barrier is available for 2 or 4 channels, according to the necessity, complete with auxiliary input flat cable extension and related header (this tool is sold separately).



Systein Italia S.r.l.
via Giovanni Agnelli, 1
33083 Villotta di Chions (PN) Italy

Ph. +39 0434 421 111
Fax +39 0434 639 021
www.smh-tech.com



FLASHRUNNER

LAN 2.0 NEXT GENERATION

"The revolutionary technology which introduces the concept of production efficiency, evolving from a programming tool to a Programming System"



FLASHRUNNER LAN2.0 NXG: DESIGNED TO FIT YOUR FIXTURE

Overview

FlashRunner LAN is the most popular programmer employed in the programming industry. On the market since the last 9 years, FlashRunner LAN has obtained an incredible success.

SHM Technologies made a huge investment to realize its evolution, employing the most advanced and highly patented technology from FlashRunner 2.0.

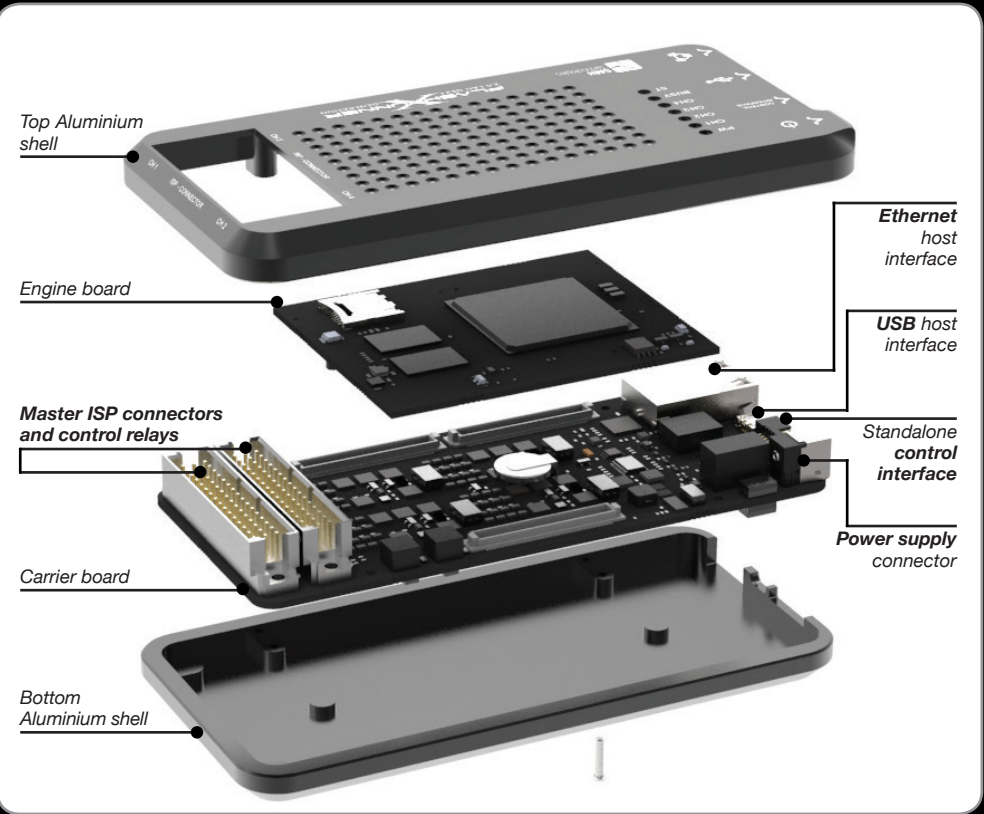
FlashRunner LAN 2.0 NEXT GENERATION is now available with high performances and unique flexibility, configurable from 1 to 4 independent and parallel channels which can be increased step-by-step through an online remote session.

Designed with its thin and compact size, this programmer has been **specifically engineered to easily suit into the fixture**, simplifying the hardware integration process.

Why FlashRunner

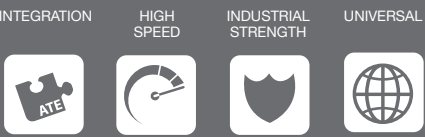
FlashRunner LAN 2.0 NEXT GENERATION combines the most advanced technology and the decennial experience of SMH Technologies in ISP programming, providing at least three years of technological competitive advantage in the market.

The programmer's new powerful technology can be **easily integrated inside the fixture**. In addition, the user has the possibility to enable from 1 to 4 independent and parallel channels according to his necessities. Thanks to this extreme flexibility, the cost of the solution will adjust to the production needs, optimizing FlashRunner's efficiency also in respect of the economic investment.



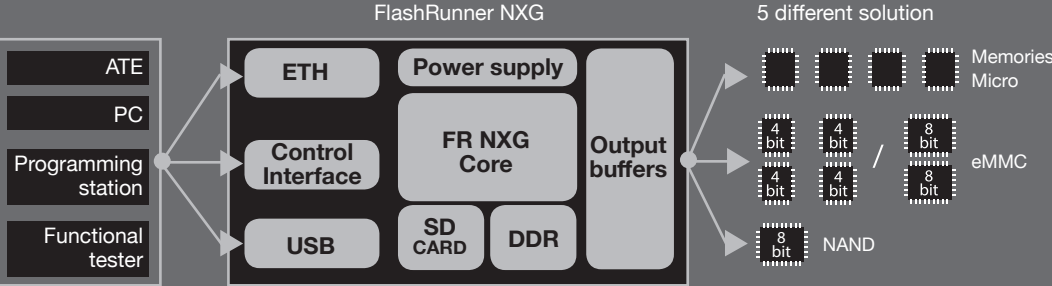
Hardware Features

- Easy fixture integration thanks to the compact size;
- Independent ISP channels supporting several communication protocols (JTAG, SPI, I2C, BDM, UART...);
- 8 digital I/O lines for each channel, coupled with dedicated ground return lines;
- Two programmable output voltage lines;
- 1 GB on-board Dynamic Memory;
- On-board timekeeper and calendar for time-stamped log file;
- Fast Ethernet interface up to 1 Gbit/s (optoisolated, autocrossing feature);
- Up to 256 GB storage memory;



- Fixture dedicated Control interface for standalone mode (optoisolated);
- Power voltage and current measurement for each channel;
- Integrated control for optional Relay Barrier tool;
- Two 48-pin DIN In-System Programming connectors;
- eMMC and NAND memory support;
- Operation status LEDs for each channel;
- USB communication interface (optoisolated);
- USB 2.0 High Speed communication interface (optoisolated);

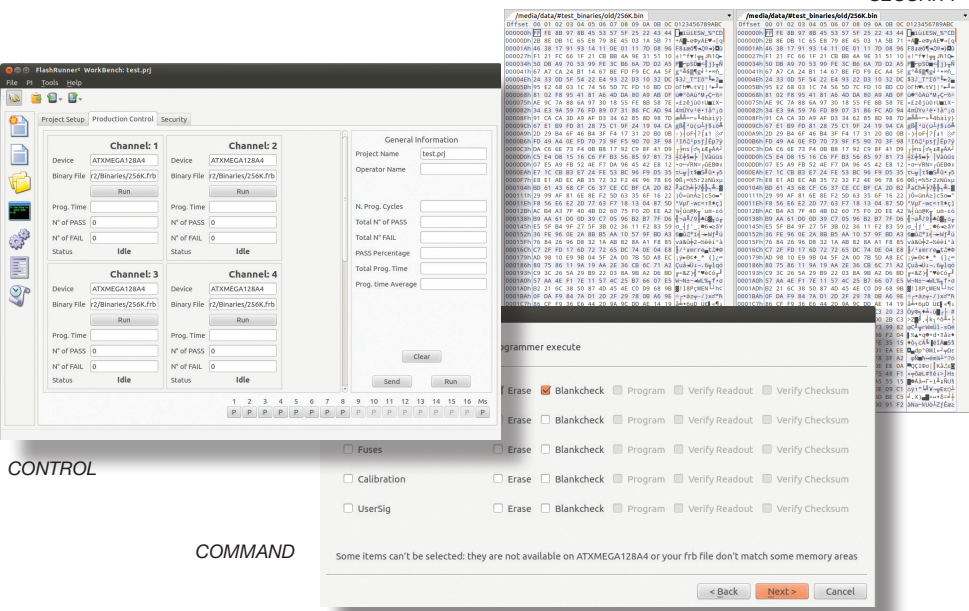
Typical application



Programming sites	4 parallel sites, managed by a 800MHz dual core ARM SoC	Static memory	Up to 256 GB SDHC card
Communication frequency	Up to 30 MHz	Relay barrier	External compact size board
Capabilities	4 microcontrollers 4 eMMC (4 bit) or 2 eMMC (8 bit) 1 NAND	Dynamic memory	1 GB DDR RAM on board
Digital lines	8 per site	Power supply	15V
Protocols	UART, JTAG, SPI, I2C, BDM, SWD and many more serial protocols; parallel eMMC, NAND and NOR memories	Logging	Via on-board timekeeper and calendar for time-stamped log files
Power supplying features	VPROG0: 1.65V - 5.5V @ 250mA max; VPROG1: 6V - 13.5V @ 200 mA max	LEDs	Operation status LED for each channel
Dimensions	Closed Case: 140x70x18mm Open Frame: 140x60x18mm	ISP connector	2 x DIN41612 48 pin
Host interfaces	Gbit Ethernet, ATE, micro USB	Voltage and current monitor	Yes

Software Features

- FR LAN 2.0 NXG WorkBench: the new user friendly Graphical User Interface (Windows and Linux compatible)
- Based on Embedded Linux operating system
- Interface Library to control the programmer directly from user's test applications
- Serial numbering
- Optional customer binary file cryptography to ensure antipiracy protection
- Log file and Production Report file
- ISP channels expansion activation license
- Memory dump and compare functions
- Easy integration with C/C++ DLL interface libraries
- ASCII-based commands



CONTROL	<ul style="list-style-type: none">• Production control panel• Programming times and statistics• Complete connections pinout• FlashRunner 2.0 DLL Libraries are compatible with:<ul style="list-style-type: none">- C (Visual Studio)- C++ (Visual Studio)- C# (Visual Studio)- Visual Basic- LabView- TestStand
COMMAND	<ul style="list-style-type: none">• Project wizard• File transfer manager• Firmware and Software updates• Windows, Linux and Mac compatible GUI Interface
SECURITY	<ul style="list-style-type: none">• Encrypted FRB files to avoid binary hacking• Dump and compare features of all channels• Log file and Production Report file• User Permission Management• Tracking of programming cycles number• Errors w/language descriptions