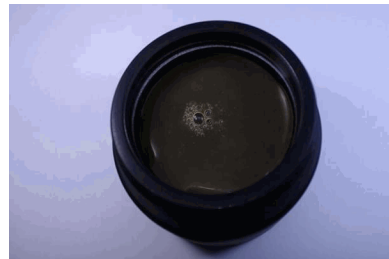


EVIO Labs Medford (pka Kenevir Research)
 540 East Vilas Road, Suite F, Central Point, OR 97502
 541-668-7444 / OLCC 010-1001626980D / www.EVIOLabs.com

Uff Salve
Silver Lining Xtracts LLC
 AG-R1049952IHH



Confident Cannabis ID: 2009KR0039.4462

Sample ID: M201390-01

Matrix: Topical

METRC Batch #:

Sampling Method/SOP: SOP.T.20.010

Date Sampled: 9/4/2020 9:00:00AM

Date Accepted: 09/04/20

Harvest/Process Lot ID: 0720.4.57-2.2 12.4.11-4

Batch ID: 0320.23.57-11

Batch Size (g): 15000mL

Unit for Sale: 1 oz (28g)

Harvest/Production Date: 9-4-2020

Cannabinoid Analysis

Date/Time Extracted: 09/08/20 10:38

Date/Time Analyzed: 09/09/20 02:46

Analysis Method/SOP: SOP.T.40.020

Sample mass: 28g/ mg/unit

Cannabinoids	LOQ(%)	mg/g	mg/unit	Cannabinoid Profile
Total THC ((THCA*0.877)+Δ9THC)		1.10	30.8	
Total CBD ((CBDA*0.877)+CBD)		20.40	571	
THCA	0.002	< LOQ	< LOQ	
delta 9-THC	0.002	1.10	30.8	
delta 8-THC	0.002	< LOQ	< LOQ	
THCV	0.002	< LOQ	< LOQ	
CBGA	0.002	< LOQ	< LOQ	
CBDA	0.002	0.11	3.08	
CBD	0.002	20.30	568	
CBDV	0.002	0.42	11.8	
CBN	0.002	0.04	1.12	
CBG	0.002	4.25	119	
CBC	0.002	2.38	66.6	
THCV-A	0.002	< LOQ	< LOQ	
CBDV-A	0.002	< LOQ	< LOQ	
CBCA	0.002	< LOQ	< LOQ	
Sum of tested Cannabinoids	0.002	28.60	801	

"Total THC" and "Total CBD" are calculated values and are an Oregon reporting requirement (OAR 333-064-0100). For Cannabinoid analysis, only delta 9-THC, THCA, CBD, CBDA are ORELAP accredited analytes. Cannabinoid values reported for plant matter are dry weight corrected; Oregon Water Activity action level is 0.65Aw and Oregon Moisture Content action level is 15%. Samples above limit will be highlighted RED; FD = Field Duplicate; LOQ = Limit of Quantitation.

Stephanie Moon
 Laboratory Director - 9/10/2020

EVIO Labs Medford (pka Kenevir Research)
 540 East Vilas Road, Suite F, Central Point, OR 97502
 541-668-7444 / OLCC 010-1001626980D / www.EVIOLabs.com

Quality Control

Batch: M20I039 - SOP.T.30.050 Prep for Cannabinoids

Blank(M20I039-BLK1)			Extracted: 09/08/20 10:38		Analyzed: 09/09/20 02:13		
Analyte	Result	LOQ	Recovery Limits	Analyte	Result	LOQ	Recovery Limits
THCA	< LOQ	0.002 (%)	< LOQ	delta 9-THC	< LOQ	0.002 (%)	< LOQ
delta 8-THC	< LOQ	0.002 (%)	< LOQ	THCV-A	< LOQ	0.002 (%)	< LOQ
THCV	< LOQ	0.002 (%)	< LOQ	CBDA	< LOQ	0.002 (%)	< LOQ
CBD	< LOQ	0.002 (%)	< LOQ	CBDV-A	< LOQ	0.002 (%)	< LOQ
CBDV	< LOQ	0.002 (%)	< LOQ	CBG	< LOQ	0.002 (%)	< LOQ
CBGA	< LOQ	0.002 (%)	< LOQ	CBN	< LOQ	0.002 (%)	< LOQ
CBCA	< LOQ	0.002 (%)	< LOQ	CBC	< LOQ	0.002 (%)	< LOQ
Sum of tested Cannabinoid:	< LOQ	0.002 (%)	< LOQ				

LCS(M20I039-BS1)			Extracted: 09/08/20 10:38		Analyzed: 09/09/20 02:29		
Analyte	% Recovery	LOQ	Recovery Limits	Analyte	% Recovery	LOQ	Recovery Limits
THCA	81.3	(%)	70-130	delta 9-THC	89.2	(%)	70-130
CBDA	83.9	(%)	70-130	CBD	97.2	(%)	70-130



Stephanie Moon
 Laboratory Director - 9/10/2020