

EVIO Labs Medford (pka Kenevir Research)  
 540 East Vilas Road, Suite F, Central Point, OR 97502  
 541-668-7444 / OLCC 010-1001626980D / www.EVIOLabs.com

**Moon-A-Pause**  
 Silver Lining Xtracts LLC  
 AG-R1049952IHH



Confident Cannabis ID: 2009KR0020.4407

Sample ID: M201371-03

Matrix: Tincture

METRC Batch #:

Sampling Method/SOP: SOP.T.20.010

Date Sampled: 9/2/2020 9:00:00AM

Date Accepted: 09/02/20

Harvest/Process Lot ID: 0420.05.57-2.2 12.4.11-4RBF

Batch ID: 0320.20.57-5MP

Batch Size (g): 45000mL

Unit for Sale: 30mL

Harvest/Production Date: 8-19-2020

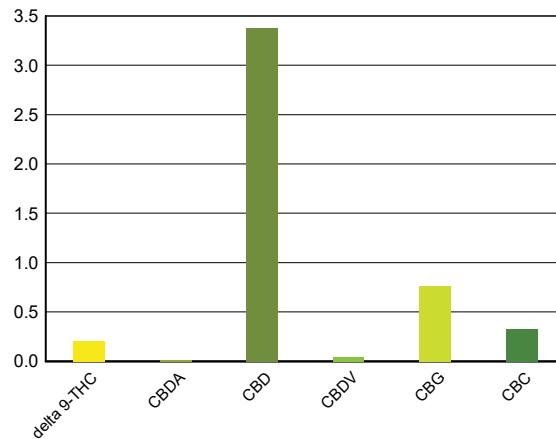
## Cannabinoid Analysis

Date/Time Extracted: 09/03/20 08:59  
 Date/Time Analyzed: 09/03/20 21:32

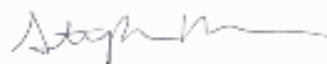
Analysis Method/SOP: SOP.T.40.020  
 Sample mass: 0.935g/ mg/mL

Cannabinoids	LOQ(%)	mg/g	mg/mL	Cannabinoid Profile
<b>Total THC</b> ((THCA*0.877)+Δ9THC)		<b>2.10</b>	<b>1.96</b>	
<b>Total CBD</b> ((CBDA*0.877)+CBD)		<b>33.80</b>	<b>31.6</b>	

THCA	0.040	< LOQ	< LOQ
delta 9-THC	0.040	2.10	1.96
delta 8-THC	0.040	< LOQ	< LOQ
THCV	0.040	< LOQ	< LOQ
CBGA	0.040	< LOQ	< LOQ
CBDA	0.040	< LOQ	< LOQ
CBD	0.040	33.80	31.6
CBDV	0.040	0.44	0.411
CBN	0.040	< LOQ	< LOQ
CBG	0.040	7.65	7.15
CBC	0.040	3.30	3.09
THCV-A	0.040	< LOQ	< LOQ
CBDV-A	0.040	< LOQ	< LOQ
CBCA	0.040	< LOQ	< LOQ
Sum of tested Cannabinoids	0.040	47.30	44.2



"Total THC" and "Total CBD" are calculated values and are an Oregon reporting requirement (OAR 333-064-0100). For Cannabinoid analysis, only delta 9-THC, THCA, CBD, CBDA are ORELAP accredited analytes. Cannabinoid values reported for plant matter are dry weight corrected; Oregon Water Activity action level is 0.65Aw and Oregon Moisture Content action level is 15%. Samples above limit will be highlighted RED; FD = Field Duplicate; LOQ = Limit of Quantitation.



Stephanie Moon  
 Laboratory Director - 9/4/2020

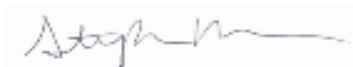
EVIO Labs Medford (pka Kenevir Research)  
 540 East Vilas Road, Suite F, Central Point, OR 97502  
 541-668-7444 / OLCC 010-1001626980D / www.EVIOLabs.com

## Quality Control

**Batch: M20I021 - SOP.T.30.050 Prep for Cannabinoids**

Blank(M20I021-BLK1)			Extracted: 09/03/20 08:59		Analyzed: 09/03/20 20:26		
Analyte	Result	LOQ	Recovery Limits	Analyte	Result	LOQ	Recovery Limits
THCA	< LOQ	0.040 (%)	< LOQ	delta 9-THC	< LOQ	0.040 (%)	< LOQ
delta 8-THC	< LOQ	0.040 (%)	< LOQ	THCV-A	< LOQ	0.040 (%)	< LOQ
THCV	< LOQ	0.040 (%)	< LOQ	CBDA	< LOQ	0.040 (%)	< LOQ
CBD	< LOQ	0.040 (%)	< LOQ	CBDV-A	< LOQ	0.040 (%)	< LOQ
CBDV	< LOQ	0.040 (%)	< LOQ	CBG	< LOQ	0.040 (%)	< LOQ
CBGA	< LOQ	0.040 (%)	< LOQ	CBN	< LOQ	0.040 (%)	< LOQ
CBCA	< LOQ	0.040 (%)	< LOQ	CBC	< LOQ	0.040 (%)	< LOQ
Sum of tested Cannabinoid:	< LOQ	0.040 (%)	< LOQ				

LCS(M20I021-BS1)			Extracted: 09/03/20 08:59		Analyzed: 09/03/20 20:43		
Analyte	% Recovery	LOQ	Recovery Limits	Analyte	% Recovery	LOQ	Recovery Limits
THCA	87.6	(%)	70-130	delta 9-THC	89.1	(%)	70-130
CBDA	88.4	(%)	70-130	CBD	96.8	(%)	70-130



Stephanie Moon  
 Laboratory Director - 9/4/2020