



Free Crochet Pattern

LION BRAND® RESPUN THICK & QUICK®

BOHO POM-POM PILLOW

Pattern Number: M21032 RNTQ



SKILL LEVEL – EASY

SIZES

About 12 x 12 in. (30.5 x 30.5 cm)

MATERIALS

- LION BRAND® RESPUN THICK & QUICK® (Art. #843)
 - #101 Sepia Rose 1 ball (A)
 - #172 Olive Branch 1 ball (B)
- LION BRAND® crochet hook size J-10 (6 mm)
- LION BRAND® Pom-Pom Maker
- LION BRAND® large-eyed blunt needle



ADDITIONAL MATERIALS

12 x 12 in. (30.5 x 30.5 cm) pillow form

GAUGE

11 sc = about 4 in. (10 cm).

BE SURE TO CHECK YOUR GAUGE.

STITCH EXPLANATION

rev sc (reverse single crochet) Single crochet worked from left to right (right to left, if left-handed). Insert hook into next st to the right (left), under loop on hook, and draw up a loop. Yarn over, draw through all loops on hook.

NOTES

1. Pillow is worked in 2 pieces: Front and Back.
2. On Front, yarn color is changed following Chart. Read RS rows of Chart from right to left and WS rows from left to right.
3. To change yarn color, work last st of old color to last yarn over. Yarn over with new color and draw through all loops on hook to complete the st. Do not cut old color, carry it along. Work over carried strand as you work sts in the new color.
4. Back is worked with a single yarn color.
5. Front and Back are crocheted together.

FRONT

With A, ch 33.

Row 1 (RS): Sc in 2nd ch from hook and in each ch across, changing yarn color following Row 1 of Chart – you will have 32 sc in this row.

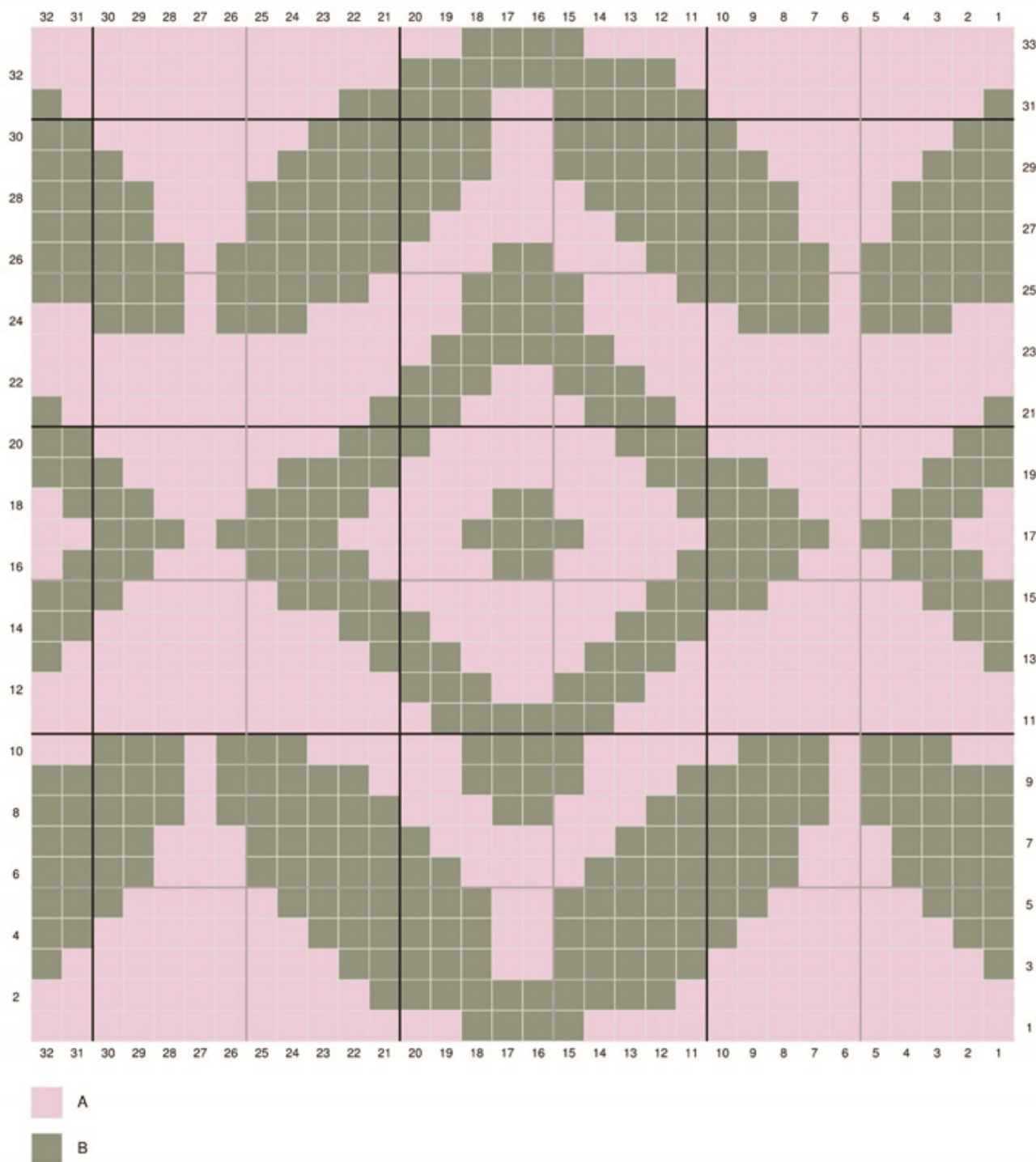
Rows 2-33: Ch 1, turn, sc in each st across, changing yarn color following next row of Chart.

Fasten off.

For thousands of free patterns, visit our website www.LionBrand.com

To order visit our website www.lionbrand.com or call: (800) 258-YARN (9276) any time!

Copyright ©1998-2021 Lion Brand Yarn Company, all rights reserved. No pattern or other material may be reproduced -- mechanically, electronically, or by any other means, including photocopying - without written permission of Lion Brand Yarn Company.



BACK

With B, ch 33.

Row 1 (RS): Sc in 2nd ch from hook and in each ch across – 32 sc.

Rows 2-33: Ch 1, turn, sc in each st across.

Fasten off.

FINISHING

Place Front and Back with WS together, sts and rows matching, and with Front facing you. Working through both thicknesses, join B with a sl st in any corner, ch 1, rev-sc evenly spaced all the way around the first 3 sides, insert pillow form then rev-sc evenly spaced along 4th side; join with sl st in first sc.

Fasten off.

Pom-Poms (make 8)

With yarn color of your choice and following package directions, make 8 pom-poms.

Tie 4 pom-poms along one side edge of Pillow and 4 pom-poms to opposite side edge.

Weave in ends.

ABBREVIATIONS

ch = chain

rep = repeat

RS = right side

sc = single crochet

sl st = slip stitch

st(s) = stitch(es)

WS = wrong side

Every effort has been made to produce accurate and complete instructions. We cannot be responsible for variance of individual knitters or crocheters, human error, or typographical mistakes.

©2021 Lion Brand Yarn Company, all rights reserved.

For thousands of free patterns, visit our website www.LionBrand.com

To order visit our website www.lionbrand.com or call: (800) 258-YARN (9276) any time!

Copyright ©1998-2021 Lion Brand Yarn Company, all rights reserved. No pattern or other material may be reproduced -- mechanically, electronically, or by any other means, including photocopying - without written permission of Lion Brand Yarn Company.