



Free Knitting Pattern

LION BRAND® FEELS LIKE ALPACA

FAIR ISLE YOKE SWEATER

Pattern Number: M21108 FLA



SKILL LEVEL – INTERMEDIATE

SIZES

S/M (L/1X, 2X/3X)

Finished Bust About 42 (49 1/2, 58) in. (106.5 (125.5, 147.5) cm)

Finished Length About 24 (25, 26) in. (61 (63.5, 66) cm)

Note: Pattern is written for smallest size with changes for larger sizes in parentheses. When only one number is given, it applies to all sizes. To follow pattern more easily, circle all numbers pertaining to your size before beginning.

MATERIALS

- LION BRAND® FEELS LIKE ALPACA (Art. #151)
 - #108 Denim 4 (5, 6) balls (A)
 - #149 Silver 1 ball (B)
 - #159 Mustard 1 ball (C)
 - #125 Taupe 1 ball (D)
 - #098 Ecru 1 ball (E)
- LION BRAND® double pointed needles size 6 (4 mm), set of 5
- LION BRAND® stitch markers
- LION BRAND® stitch holders
- LION BRAND® large-eyed blunt needle



ADDITIONAL MATERIALS

Circular knitting needle size 6 (4 mm), 32 in. (81.5 cm) long

Circular knitting needle size 6 (4 mm), 24 in. (61 cm) long

GAUGE

20 sts + 24 rnds = about 4 in. (10 cm) over St st (k every st of every rnd).

BE SURE TO CHECK YOUR GAUGE.

STITCH EXPLANATION

M1 (make 1) An increase worked by lifting the horizontal strand lying between needles and placing it onto the left needle. Knit this new stitch through the back loop – 1 st increased.

PATTERN STITCHES

K2, p2 Rib worked in rnds (worked over a multiple of 4 sts)

Rnd 1: *K2, p2; rep from * to end of rnd.

Rnd 2: K the knit sts and p the purl sts.

Rep Rnd 2 for K2, p2 Rib worked in rnds.

NOTES

1. Sweater is worked in rnds from the lower edge upwards.
2. Sleeves are worked separately in rnds and then set aside. Body is worked up to underarms then Sleeves are joined to Body and yoke is worked upwards to neck.
3. Yoke and lower sections of Body and Sleeves are worked in stranded Fair Isle colorwork, using 2 colors per row, following Charts. Carry color not in use across WS of work. When working Fair Isle patterns, carry colors not in use across side of piece. At the end of every other rnd, twist working yarn around unused colors to secure strands. If carrying color across 5 or more sts, twist yarns on WS to prevent overly long strands (floats) on the WS.
4. Read all rnds of charts from right to left.

Note:

The following corrections have been incorporated into the pattern below. We are highlighting the corrections separately here so that if you have printed out an earlier version of the pattern you'll know what was changed.

CORRECTIONS (applied Feb 1th, 2022)

...

Decrease Rnd 2: With A, ... change yarn color following Chart III until all ~~8~~ **5** rnds of Chart III are complete.

Decrease Rnd 5: With A, ... change yarn color following Chart I until all ~~4~~ **9** rnds of Chart I are complete.

SLEEVES (make 2)

With double pointed needles and A, cast on 52 (56, 60) sts. Distribute sts onto 4 needles placing 13 (14, 15) sts on each of 4 needles. Join by working the first st on left hand needle with the working yarn from the right hand needle and being careful not to twist sts.

Work in K2, p2 Rib until piece measures about 2 1/2 in. (6.5 cm) from beg.

With A, knit 2 rnds.

Next Rnd (Increase Rnd): With A, * k13 (14, 15), M1; rep from * 3 more times – you will have 56 (60, 64) sts in this rnd.

Continue in St st worked in rnds (k every st of every rnd) AND beg with Rnd 1 of chart, change yarn color following Chart I until all 9 rnds of Chart I are complete.

With A, knit 1 rnd.

Next Rnd (Increase Rnd): With A, k1, M1, k to last st, M1, k1 – 58 (62, 66) sts.

With A, knit 5 (3, 2) rnds.

Rep last 6 (4, 3) rnds for 11 (15, 22) more times – 80 (92, 110) sts when all increases have been completed.

With A, work in St st until piece measures about 17 1/2 (18 1/2, 19) in. (44.5 (47, 48.5) cm) from beg.

Next Rnd: With A, k to last 6 (7, 7) sts, bind off 6 (7, 7) sts, remove beg of rnd marker, bind off 6 (7, 7) more sts, place rem 68 (78, 96) sts on a holder.

Cut yarn and set Sleeve aside.

Rep for 2nd Sleeve.

BODY

With longer circular needle and A, cast on 216 (256, 300) sts.

Place marker for beg of rnd. Join by working the first st on left hand needle with the working yarn from the right hand needle and being careful not to twist sts.

Work in K2, p2 Rib until piece measures about 2 1/2 in. (6.5 cm) from beg.

With A, knit 3 rnds.

Continue in St st worked in rnds (k every st of every rnd) AND beg with Rnd 1 of chart, change yarn color following Chart I until all 9 rnds of Chart I are complete.

With A, knit 1 rnd.

Decrease Rnd: With A, * k34 (30, 28), k2tog; rep from * around – you will have 210 (248, 290) sts in this rnd.

With A, work in St st worked in rnds until piece measures about 15 in. (38 cm) from beg.

Next Rnd: With A, k to last 6 (7, 7) sts, bind off 6 (7, 7) sts, remove beg of rnd marker, bind off 6 (7, 7) more sts, k93 (110, 131) for front, bind off 12 (14, 14) sts, k93 (110, 131) for back – 186 (220, 262) sts rem on needle.

Join Body and Sleeves

Rnd 1: With A, with Body sts on right needle, k across sts of one Sleeve to last st of Sleeve, knit last st of Sleeve tog with first st of front of Body, k to last st of front of Body, knit last st of front tog with first st of second Sleeve, k across sts of second Sleeve to last st of Sleeve, knit last st of Sleeve tog with first st of back of Body, k to last st of back of Body, knit last st of back tog with first st of first Sleeve – 318 (372, 450) sts.

Place marker for beg of rnd. Join by working the first st on left hand needle with the working yarn from the right hand needle.

Yoke

With A, knit 7 rnds.

Note: Change to shorter circular needle when stitches have been sufficiently decreased.

Size S/M ONLY

Proceed to Charted Patterns.

Size L/1X ONLY

Next Rnd: With A, * k10, k2tog; rep from * around – 341 sts.

With A, knit 1 rnd.

Next Rnd: With A, * k9, k2tog; rep from * around – 310 sts.

With A, knit 1 rnd.

Next Rnd: With A, * k8, k2tog; rep from * around – 279 sts.

With A, knit 1 rnd.

Proceed to Charted Patterns.

Size 2X/3X ONLY

Next Rnd: With A, * k13, k2tog; rep from * around – 420 sts.

With A, knit 1 rnd.

Next Rnd: With A, * k12, k2tog; rep from * around – 390 sts.

With A, knit 1 rnd.

Next Rnd: With A, * k11, k2tog; rep from * around – 360 sts.

With A, knit 1 rnd.

Next Rnd: With A, * k10, k2tog; rep from * around – 330 sts.

With A, knit 1 rnd.

Next Rnd: With A, * k9, k2tog; rep from * around – 300 sts.

With A, knit 1 rnd.

Next Rnd: With A, * k8, k2tog; rep from * around – 270 sts.

With A, knit 1 rnd.

Proceed to Charted Patterns.

Charted Patterns

Decrease Rnd 1: With A, * k51 (7, 7), k2tog; rep from * around – 312 (248, 240) sts.

Continue in St st worked in rnds AND beg with Rnd 1 of chart, change yarn color following Chart II until all 8 rnds of Chart II are complete.

With A, knit 1 rnd.

Decrease Rnd 2: With A, * k6, k2tog; rep from * around – 273 (217, 210) sts.

Continue in St st worked in rnds AND beg with Rnd 1 of chart, change yarn color following Chart III until all 5 rnds of Chart III are complete.

With A, knit 1 rnd.

Decrease Rnd 3: With A, * k5, k2tog; rep from * around – 234 (186, 180) sts.

Continue in St st worked in rnds AND beg with Rnd 1 of chart, change yarn color following Chart IV until all 6 rnds of Chart IV are complete.

With A, knit 1 rnd.

Decrease Rnd 4: With A, * k4, k2tog; rep from * around – 195 (155, 150) sts.

Continue in St st worked in rnds AND beg with Rnd 1 of chart, change yarn color following Chart V until all 6 rnds of Chart V are complete.

With A, knit 1 rnd.

Decrease Rnd 5: With A, * k3, k2tog; rep from * around – 156 (124, 120) sts.

Continue in St st worked in rnds AND beg with Rnd 1 of chart, change yarn color following Chart I until all 9 rnds of Chart I are complete.

With A, knit 1 rnd.

Decrease Rnd 6: With A, * k2 (29, 120), (k2tog) 1 (1, 0) time(s); rep from * around – 117 (120, 120) sts.

Note: When you see '0' repeats in an instruction, this means that for that size, you should not work any sts, just skip to the next part of the instruction.

Next Rnd: With A, knit and decrease 1 (0, 0) sts anywhere in rnd – 116 (120, 120) sts.

With A, work in K2, p2 Rib for about 1 1/2 in. (4 cm).

Bind off.

FINISHING

Weave in ends.

Block to measurements

ABBREVIATIONS

beg = begin(ning)

k = knit

k2tog = knit 2 stitches together

p = purl

rem = remain(ing)(s)

rep = repeat

rnd(s) = round(s)

RS = right side

st(s) = stitch(es)

St st = Stockinette stitch

tog = together

WS = wrong side

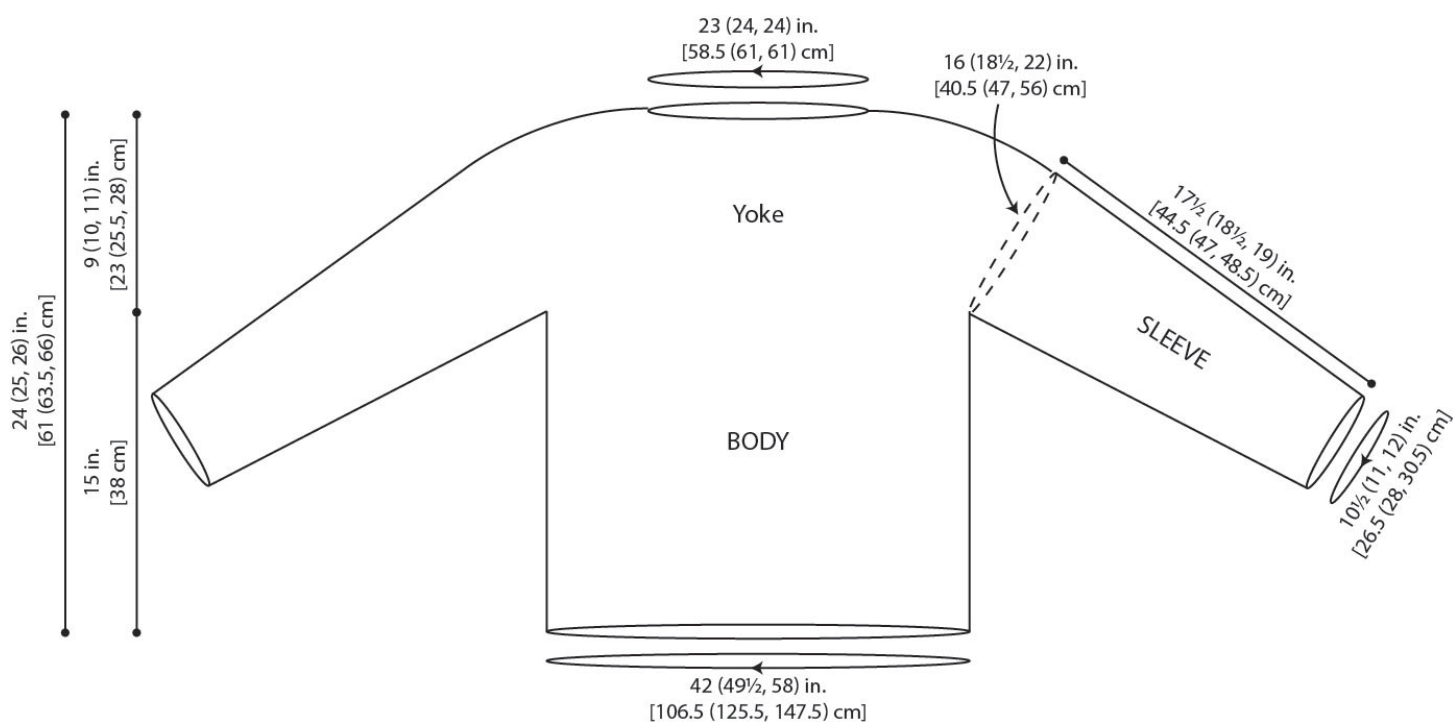
Every effort has been made to produce accurate and complete instructions. We cannot be responsible for variance of individual knitters or crocheters, human error, or typographical mistakes.

©2022 Lion Brand Yarn Company, all rights reserved.

For thousands of free patterns, visit our website www.LionBrand.com

To order visit our website www.lionbrand.com or call: (800) 258-YARN (9276) any time!

Copyright ©1998-2022 Lion Brand Yarn Company, all rights reserved. No pattern or other material may be reproduced -- mechanically, electronically, or by any other means, including photocopying - without written permission of Lion Brand Yarn Company.



For thousands of free patterns, visit our website www.LionBrand.com

To order visit our website www.lionbrand.com or call: (800) 258-YARN (9276) any time!

Copyright ©1998-2022 Lion Brand Yarn Company, all rights reserved. No pattern or other material may be reproduced -- mechanically, electronically, or by any other means, including photocopying - without written permission of Lion Brand Yarn Company.

Chart I

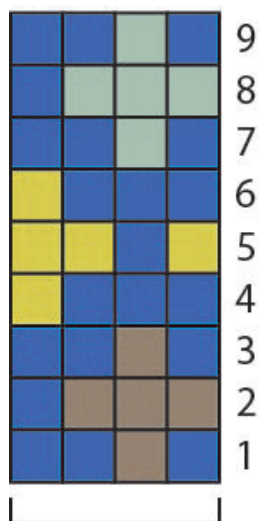


Chart II

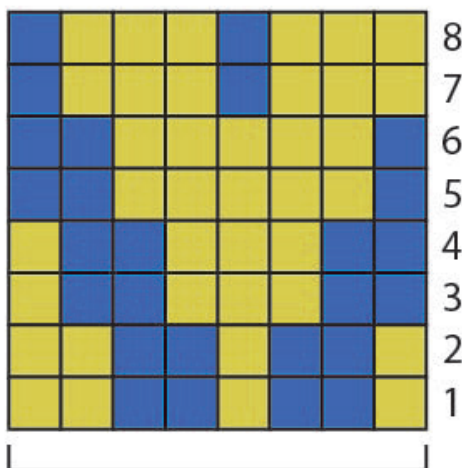


Chart III

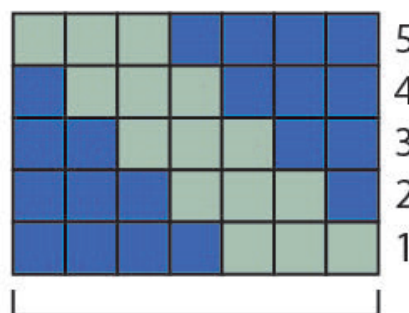


Chart V

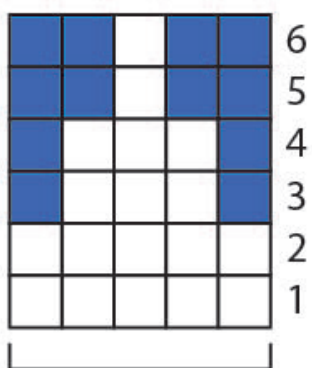
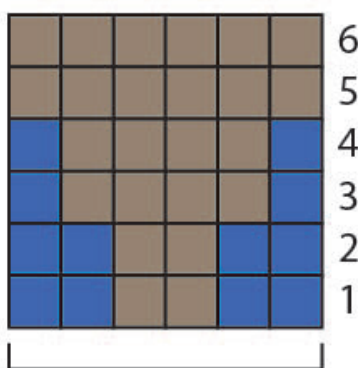


Chart IV



COLOR KEY

-  Color A
-  Color B
-  Color C
-  Color D
-  Color E