



Free Knitting Pattern
LION BRAND® TRUBOO
BELLEROSE CARDIGAN

Pattern Number: M21060 TB



SKILL LEVEL – INTERMEDIATE

SIZES

S/M (L/1X, 2X/3X, 4X/5X)

Finished Bust About 42 (50, 58, 66) in. (106.5 (127, 147.5, 167.5) cm)

Finished Length About 25 (26, 27, 28) in. (63.5 (66, 68.5, 71) cm)

Note: Pattern is written for smallest size with changes for larger sizes in parentheses. When only one number is given, it applies to all sizes. To follow pattern more easily, circle all numbers pertaining to your size before beginning.

MATERIALS

- LION BRAND® TRUBOO (Art. #837)
#108 Seafoam 3 (4, 4, 5) balls
- LION BRAND® large-eyed blunt needle



ADDITIONAL MATERIALS

Circular needle size 8 (5 mm), 36 in. (91.5 cm) long or longer

GAUGE

16 sts + 27 rows = about 4 in. (10 cm) in St st (k on RS, p on WS).

BE SURE TO CHECK YOUR GAUGE.

STITCH EXPLANATIONS

kfb (knit in front and back) Knit next st without removing it from left needle, then k through back of same st – 1 st increased.

s2kp (slip 2, knit 1, pass over) Slip next 2 sts as if to knit them tog, knit 1, pass the 2 slipped sts up and over the knit st and off the needle – 2 sts decreased.

ssk (slip, slip, knit) Slip next 2 sts as if to knit, one at a time, to right needle; insert left needle into front of these 2 sts and knit them tog - 1 st decreased.

yo (yarn over) an increase that also creates a small decorative hole (eyelet) in the fabric, worked as follows:

1. Bring yarn to front, between the needles.
2. Take yarn to back, over the right needle. This creates the new st. You are now ready to proceed with the next st as instructed.

TECHNIQUE EXPLANATION

Backwards Loop Cast On

1. At the end of a row, *wrap the yarn around your thumb or forefinger in a counter clockwise direction.
2. Insert the right-hand needle under the strand of yarn at the front of your finger.
3. Remove your finger from the loop and tighten the loop around the needle.

Rep from * for desired number of sts.

For thousands of free patterns, visit our website www.LionBrand.com

To order visit our website www.lionbrand.com or call: (800) 258-YARN (9276) any time!

Copyright ©1998-2021 Lion Brand Yarn Company, all rights reserved. No pattern or other material may be reproduced -- mechanically, electronically, or by any other means, including photocopying - without written permission of Lion Brand Yarn Company.

PATTERN STITCHES

Flower Lace (multiple of 8 sts + 5 additional sts)

Row 1 (RS): K4, * ssk, yo, k1, yo, k2tog, k3; rep from * to last st, k1.

Row 2 and all WS rows: Purl.

Row 3: K4, * k1, yo, s2kp, yo, k4; rep from * to last st, k1.

Row 5: Rep Row 1.

Row 7: Knit.

Row 9: Ssk, yo, k1, yo, k2tog; * k3, ssk, yo, k1, yo, k2tog; rep from * across.

Row 11: K1, yo, s2kp, yo, k1, * k4, yo, s2kp, yo, k1; rep from * across.

Row 13: Rep Row 9.

Row 15: Knit.

Row 16: Purl.

Rep Rows 1-16 for Flower Lace pattern.

Eyelet Lace (worked over multiple of 2 sts)

Row 1 (RS): Sl 1, * yo, k2tog; rep from * to last st, k1.

K1, p1 Rib (worked over multiple of 2 sts)

Row 1 (RS): * K1, p1; rep from * to end of row.

Row 2: K the knit sts and p the purl sts.

Rep Row 2 for K1, p1 Rib.

NOTES

1. Cardigan is made in 3 pieces: Back and 2 Fronts.
2. Each piece is worked from the lower edge upwards beginning with a ribbed lower band and continuing in sections of Flower Lace, Eyelet Lace, and St st (k on RS, p on WS).
3. Flower Lace pattern can be worked following written instructions or reading Chart. Read RS rows of Chart from right to left and WS rows from left to right.
4. Sts are cast on at underarms of Front and Back for sleeves.
5. A circular needle is used to accommodate the number of sts, work back and forth on circular needle as if working on straight needles.
6. When you see 'as established' in the instructions, this means to continue in the current pattern st, lining up sts as in previous rows.

Note:

The following corrections have been incorporated into the pattern below. We are highlighting the corrections separately here so that if you have printed out an earlier version of the pattern you'll know what was changed.

CORRECTIONS (applied March 30th, 2022)

MATERIALS

- LION BRAND® TRUBOO (Art. #837)
#108 Seafoam 3 (4, 4, 5) balls
- ~~LION BRAND® knitting needles size 6 (4 mm)~~
- LION BRAND® large-eyed blunt needle

BACK

Cast on 88 (104, 120, 136) sts.

Work in K1, p1 Rib until piece measures about 2 in. (5 cm) from beg, end with a WS row as the last row you work.

Flower Lace Section

Row 1 (Decrease Row – RS): Sl 1 (selvedge st), k to last 3 sts, k2tog, p1 (selvedge st) – you will have 87 (103, 121, 135) sts in this row.

Slipping first st and purling last st, work in St st (k on RS, p on WS) for 3 more rows.

Slipping first st and purling last st, beg with Row 1 of pattern, work in Flower Lace pattern for 64 rows (4 repeats of Rows 1-16 of pattern).

Knit 2 rows.

Eyelet Lace Section

Row 1 (Increase Row – RS): Sl 1, k to last 2 sts, kfb, p1 – 88 (104, 120, 136) sts.

Slipping first st and purling last st for selvedges, work in St st for 1 more row.

Slipping first st and purling last st, work Row 1 of Eyelet Lace pattern.

Knit 2 rows.

Purl 1 row.

Knit 1 row.

Slipping first st and purling last st for selvedges, work in St st until piece measures about 18 in. (45.5 cm) from beg, end with a RS row as the last row you work.

Shape Sleeves

Using Backwards Loop Cast On, cast on 24 (24, 20, 16) sts for first sleeve.

From WS and beg with sts just cast on, purl across; at end of row, using

Backwards Loop Cast On, cast on 24 (24, 20, 16) sts for second sleeve.

From RS and beg with sts just cast on, knit across – 136 (152, 160, 168) sts.

Slipping first st and purling last st for selvedges, work in St st until piece measures about 25 (26, 27, 28) in. (63.5 (66, 68.5, 71) cm) from beg.

Bind off.

LEFT FRONT

Cast on 40 (48, 56, 64) sts.

Work same as Back until piece measures about 18 in. (45.5 cm) from beg, end with a WS row as the last row you work.

Shape Sleeve

Using Backwards Loop Cast On technique, cast on 24 (24, 20, 16) sts for sleeve.

From RS and beg with sts just cast on, knit across – 64 (72, 76, 80) sts.

Slipping first st and purling last st for selvages, work in St st until piece measures same as Back.

Bind off.

RIGHT FRONT

Cast on 40 (48, 56, 64) sts.

Work same as Back until piece measures about 18 in. (45.5 cm) from beg, end with a RS row as the last row you work.

Shape Sleeve

Using Backwards Loop Cast On technique, cast on 24 (24, 20, 16) sts for sleeve.

From WS and beg with sts just cast on, purl across – 64 (72, 76, 80) sts.

Slipping first st and purling last st for selvages, work in St st until piece measures same as Back.

Bind off.

FINISHING

Sew top edges of Fronts to top edge of Back for shoulder seams and top of sleeve seams.

Sew side and Sleeve seams.

Weave in ends.

ABBREVIATIONS

beg = begin(ning)

k = knit

k2tog = knit 2 stitches together

p = purl

rep = repeat

RS = right side

sl = slip

st(s) = stitch(es)

St st = Stockinette stitch

WS = wrong side

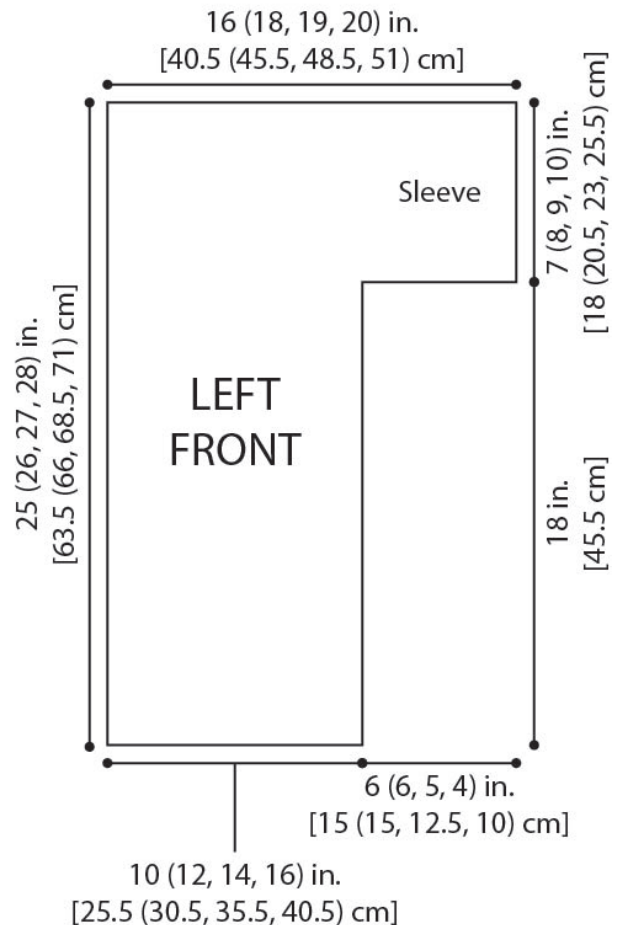
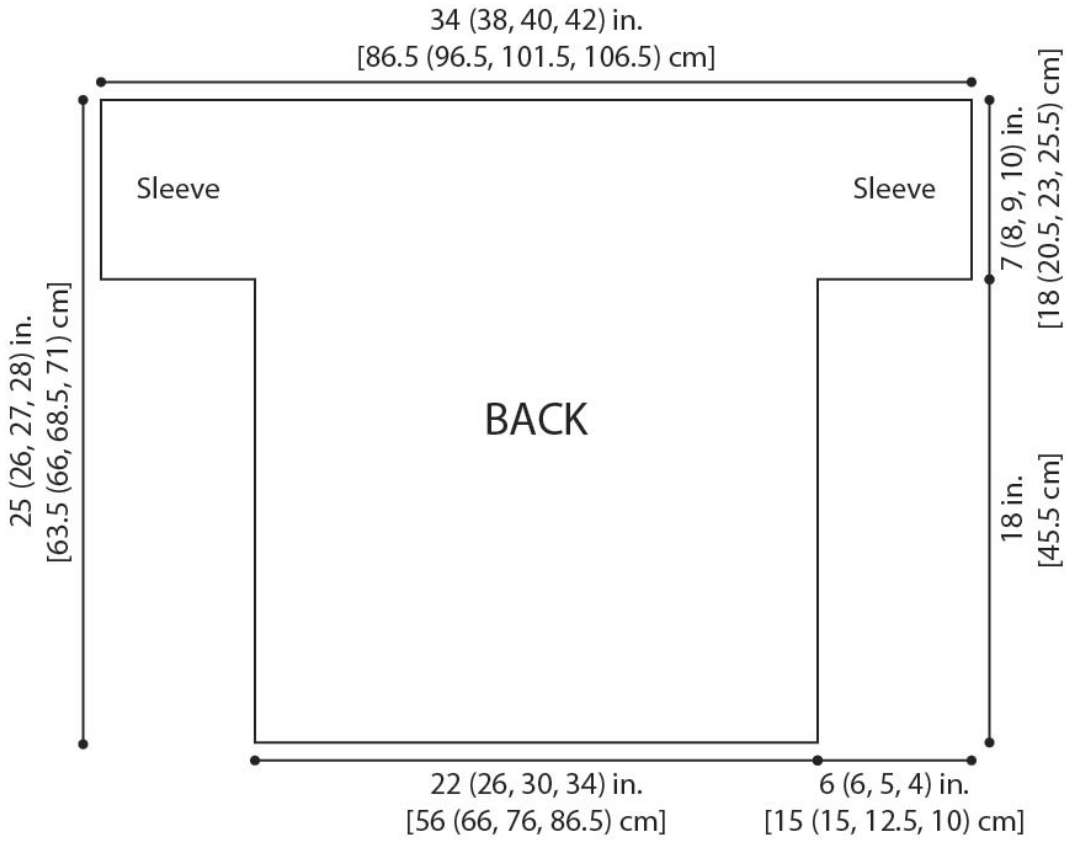
Every effort has been made to produce accurate and complete instructions. We cannot be responsible for variance of individual knitters or crocheters, human error, or typographical mistakes.

©2021 Lion Brand Yarn Company, all rights reserved.

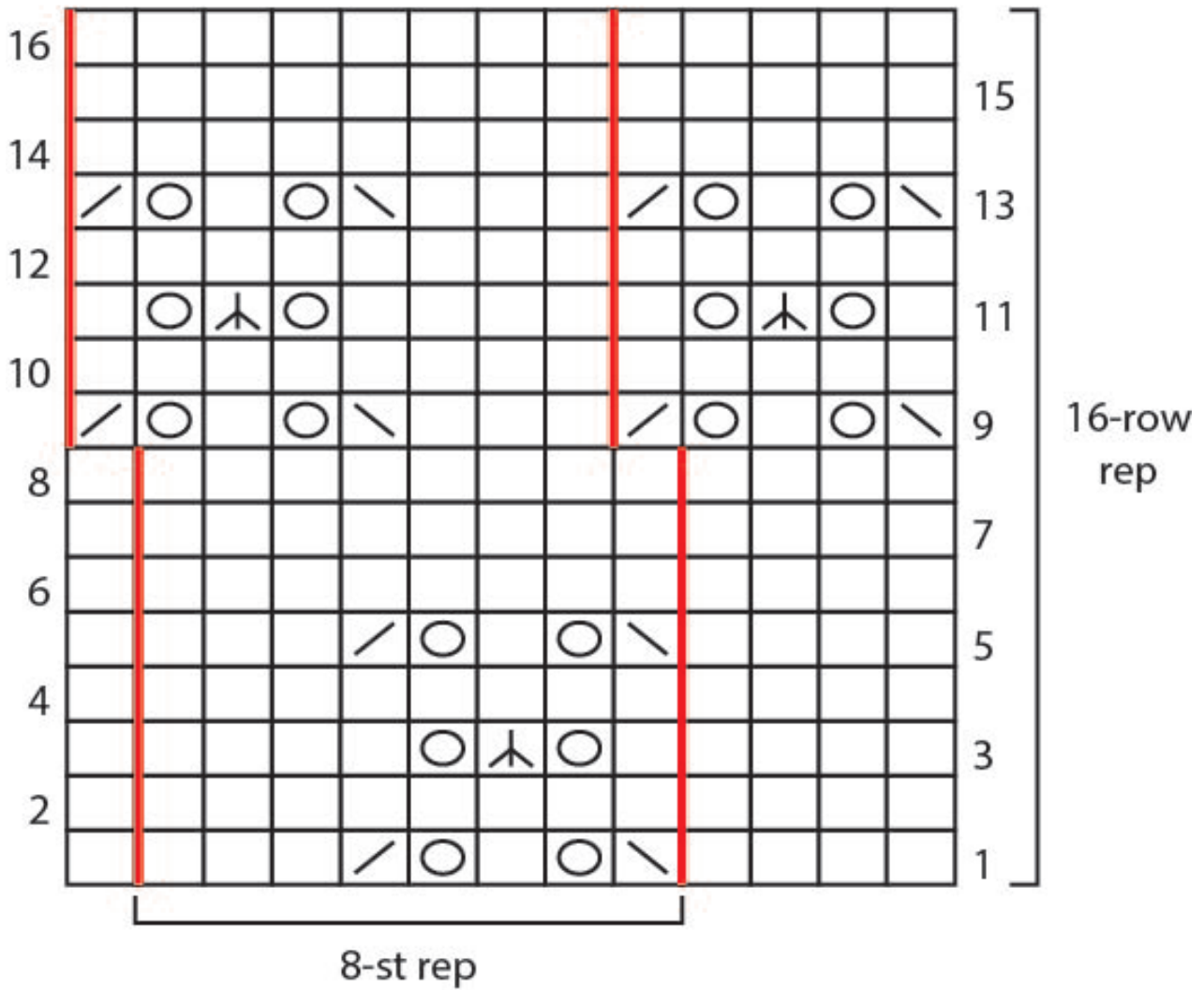
For thousands of free patterns, visit our website www.LionBrand.com

To order visit our website www.lionbrand.com or call: (800) 258-YARN (9276) any time!

Copyright ©1998-2021 Lion Brand Yarn Company, all rights reserved. No pattern or other material may be reproduced -- mechanically, electronically, or by any other means, including photocopying - without written permission of Lion Brand Yarn Company.



Flower Lace



KEY

- knit on RS, purl on WS
- yarn over
- k2tog (knit 2 stitches together)
- ssk (slip, slip, knit)
- s2kp (slip 2, k1, pass over)