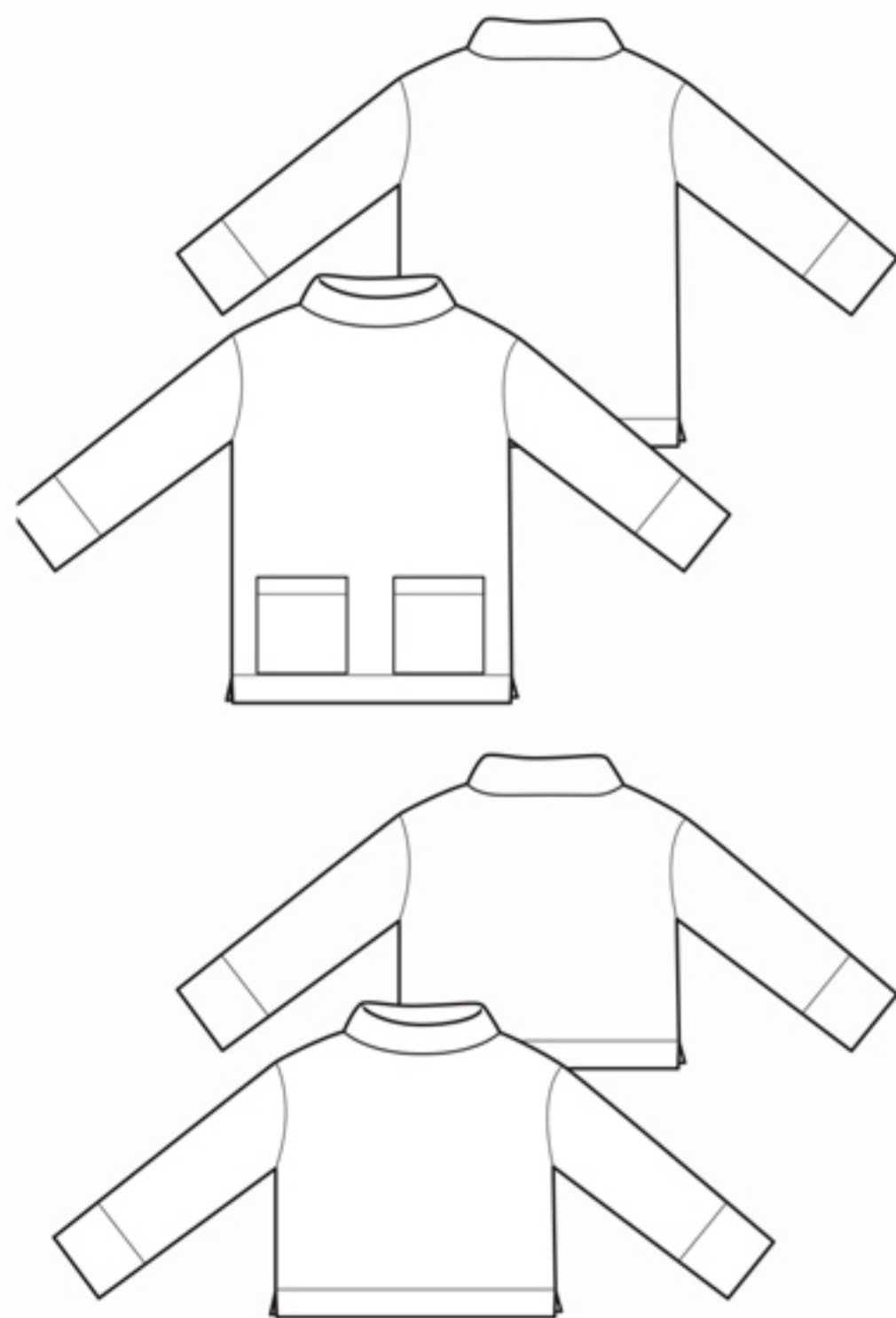


The Maker's Top



UK size	4	6	8	10	12	14	16	18	20	22
Inches										
Bust	28	30	32	34	36	38	40	42	44	46
Waist	21	23	25	27	29	31	33	35	37	39
Hips	31	33	35	37	39	41	43	45	47	49

Centimetres										
Bust	71	76	81	86	91	96	101	106	111	116
Waist	54	59	64	69	74	79	84	89	94	99
Hips	79	84	89	94	99	104	109	114	119	124

Finished measurements (cm/inches) – SN = side neck – OA = overarm

Longer length (cm)	76	76.5	77	77.5	78	78.5	79	79.5	80	80.5
SN to hem (inch)	30	30¼	30½	30½	30¾	31	31	31¼	31½	31½
Shorter length (cm)	63	63.5	64	64.5	65	65.5	66	66.5	67	67.5
SN to hem (inch)	24¾	25	25¼	25¼	25½	25¾	26	26¼	26¼	26½
Sleeve OA (cm)	73	73.5	74	74.5	75	75.5	76	76.5	77	77.5
SN to cuff (inch)	28¾	29	29¼	29¼	29½	29¾	30	30¼	30¼	30½
Bicep (cm)	31.5	32.75	34	35.25	36.5	37.75	39	40.25	41.5	42.75
on sleeve (inch)	12½	13	13½	14	14½	15	15½	16	16½	17
Bust (cm)	108	113	118	123	128	133	138	143	148	153
(inch)	42½	44½	46½	48½	50½	52½	54½	56½	58½	60½
Hem (cm)	108	113	118	123	128	133	138	143	148	153
(inch)	42½	44½	46½	48½	50½	52½	54½	56½	58½	60½

Fabric required – Shorter length

120cm wide	1.70	1.70	1.70	1.70	1.70	2.50	2.50	2.50	2.50	2.50
150cm wide	1.40	1.40	1.40	1.40	1.40	1.70	1.70	1.70	1.70	1.70
48" wide	2yd	2yd	2yd	2yd	2yd	2¾yd	2¾yd	2¾yd	2¾yd	2¾yd
60" wide	1¾yd	1¾yd	1¾yd	1¾yd	1¾yd	2yd	2yd	2yd	2yd	2yd
Longer length										
120cm wide	2.00	2.00	2.00	2.00	2.00	2.60	2.60	2.60	2.60	2.60
150cm wide	1.60	1.60	1.60	1.60	1.60	2.00	2.00	2.00	2.00	2.00
48" wide	2¼yd	2¼yd	2¼yd	2¼yd	2¼yd	3yd	3yd	3yd	3yd	3yd
60" wide	1¾yd	1¾yd	1¾yd	1¾yd	1¾yd	2¼yd	2¼yd	2¼yd	2¼yd	2¼yd

Also required – 20cm x 80cm fusible interfacing and matching sewing thread.

Fabric Suggestions All light to medium weight woven fabrics: cotton, linen, denim, chambray, Tencel, viscose, babycord.

Cover image – Flora wears the longer length in cotton with The Wide-legged Trouser. On the mannequin: the shorter length in lighter-weight cotton.