



*Free Crochet Pattern*  
LION BRAND® POUND OF LOVE®  
**PLAID TABLE RUNNER**

Pattern Number: M21183 POL



## SKILL LEVEL – INTERMEDIATE

## APPROXIMATE CRAFTING TIME: VARIES

## SIZES

About 10 1/2 x 35 1/2 in. (26.5 x 90 cm)

## SUPPLIES & TOOLS

- LION BRAND® POUND OF LOVE® (Art. #550)  
#132 Pumpkin Spice 1 ball (A)  
#152 Sumac 1 ball (B)  
#100 White 1 ball (C)
- LION BRAND® crochet hook size J-10 (6 mm)
- LION BRAND® large-eyed blunt needle
- 4 x 4 in. (10 x 10 cm) piece of cardboard (for making tassels)



## GAUGE

15 sc = about 4 in. (10 cm).

BE SURE TO CHECK YOUR GAUGE.

## DIRECTIONS

1. Table Runner is worked in one piece, back and forth in rows, changing yarn color following Chart.
2. Each box on Chart represents one single crochet (sc) worked with the indicated yarn. Read RS rows from right to left and WS rows from left to right.
3. Wind B into 3 separate balls and C into 4 separate balls before beginning.
4. To change yarn color, work last st of old color to last yarn over. Yarn over with new color and draw through all loops on hook to complete st. Proceed with new color. Do not cut old color.
5. When not in use, carry A along tops of sts of previous row and work sts of current row over the top of the carried strand. Use a separate ball of B and C for each section of color. When not in use, leave B and C on WS of piece and pick strand up again when needed in next row. Cut B and C at the end of each 6-row section of Chart in which they appear.
6. A border is worked all the way around the outside of the Runner.
7. Tassels are tied to corners of completed Runner.

For thousands of free patterns, visit our website [www.LionBrand.com](http://www.LionBrand.com)

To order visit our website [www.lionbrand.com](http://www.lionbrand.com) or call: (800) 258-YARN (9276) any time!

Copyright ©1998-2021 Lion Brand Yarn Company, all rights reserved. No pattern or other material may be reproduced -- mechanically, electronically, or by any other means, including photocopying - without written permission of Lion Brand Yarn Company.

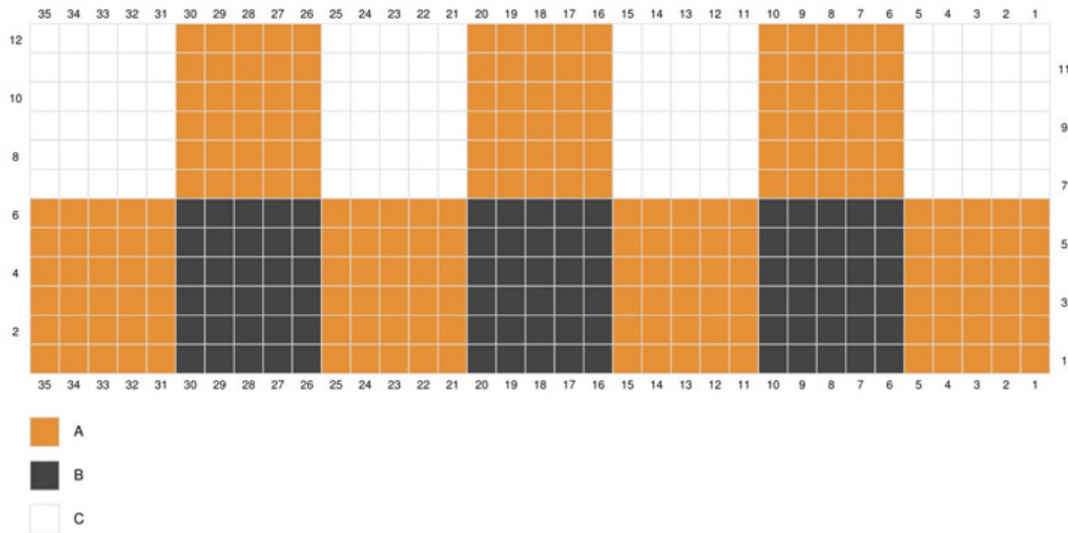
## TABLE RUNNER

With B, ch 36.

**Note:** If you would like foundation ch to match colors used in Row 1, work as follows: \* With A, ch 5; with B, ch 5; rep from \* 2 more times, with A, ch 6. When changing yarn color, leave long yarn tails to weave in later.

**Row 1 (RS):** Sc in 2nd ch from hook and in each ch across, changing yarn color following Row 1 of Chart – you will have 35 sc in this row.

**Row 2:** Ch 1, turn, sc in each st across, changing yarn color following Row 2 of Chart.



Continue to work in rows of sc, changing yarn color following Chart, until all rows of Chart have been worked 10 times, for a total of 120 rows.

Fasten off.

### **Border:**

**Rnd 1:** From RS, draw up a loop of B in any corner, ch 3 (counts as dc), dc as evenly spaced as possible all the way around outer edges of Runner working 3 dc in each corner; join with sl st in top of beg ch-3.

**Rnd 2:** Ch 1, sc in each st around working 3 sc in 2nd dc of each corner 3-dc group; join with sl st in first sc.

Fasten off.

## FINISHING

Weave in ends.

### **TASSELS: (make 4)**

Cut a 10 in. (25 cm) length of B, thread into blunt needle and set aside for tie. Wrap B around cardboard 60 times. Insert threaded needle under all strands at one edge of cardboard. Pull tightly and knot securely near strands. Cut yarn loops at opposite edge of cardboard.

Cut a 6 in. (15 cm) length of B and wrap tightly around loops 1 in. (2.5 cm) below top knot. Knot securely; then thread ends into needle and weave to center of tassel.

Trim tassel ends evenly. Tie a tassel to each corner of Table Runner.

For thousands of free patterns, visit our website [www.LionBrand.com](http://www.LionBrand.com)

To order visit our website [www.lionbrand.com](http://www.lionbrand.com) or call: (800) 258-YARN (9276) any time!

Copyright ©1998-2021 Lion Brand Yarn Company, all rights reserved. No pattern or other material may be reproduced -- mechanically, electronically, or by any other means, including photocopying - without written permission of Lion Brand Yarn Company.

## ABBREVIATIONS

**beg** = begin(ning)

**ch** = chain

**dc** = double crochet

**rep** = repeat

**rnd** = round

**RS** = right side

**sc** = single crochet

**sl st** = slip stitch

**st(s)** = stitch(es)

**WS** = wrong side

*Every effort has been made to produce accurate and complete instructions. We cannot be responsible for variance of individual knitters or crocheters, human error, or typographical mistakes.*

*©2021 Lion Brand Yarn Company, all rights reserved.*

For thousands of free patterns, visit our website [www.LionBrand.com](http://www.LionBrand.com)

To order visit our website [www.lionbrand.com](http://www.lionbrand.com) or call: (800) 258-YARN (9276) any time!

Copyright ©1998-2021 Lion Brand Yarn Company, all rights reserved. No pattern or other material may be reproduced -- mechanically, electronically, or by any other means, including photocopying - without written permission of Lion Brand Yarn Company.

