



Free Crochet Pattern

LION BRAND® HOMETOWN®

ABC THROW

Pattern Number: M21141 HT



SKILL LEVEL – EASY

SIZES

About 40 x 60 in. (101.5 x 152.5 cm)

MATERIALS

- LION BRAND® HOMETOWN® (Art. #135)
#098 Houston Cream 19 balls (A)
#149 Dallas Grey 3 balls (B)
- LION BRAND® crochet hook size N (10 mm)
- LION BRAND® large-eyed blunt needle



GAUGE

10 sc + 10 rows = about 4 in. (10 cm).

BE SURE TO CHECK YOUR GAUGE.

NOTES

1. Throw is worked in one piece, back and forth in rows.
2. Yarn color is changed to form “ABC” lettering following Chart. Each square of Chart represents one single crochet st worked in the indicated color. Read RS rows of Chart from right to left and WS rows from left to right.
3. To change yarn color, work last st of old color to last yarn over. Yarn over with new color and draw through all loops on hook to complete st. Carry color not in use along top of sts of previous row and work new color sts over the top of the carried strand. Join lettering color at the beginning of each letter and cut it only when the letter is complete. Leave long yarn tails on the WS of piece, to weave in later.
4. Edging is worked around outside edge of completed Throw.

THROW

With A, ch 101.

Row 1 (RS): Sc in 2nd ch from hook and in each ch across – you will have 100 sc in this row.

Rows 2-10: Ch 1, turn, sc in each st across.

Charted Lettering

Tip

Zoom in on the chart to enlarge it.

Row 11: Ch 1, turn, sc in each st across AND change yarn color following Row 11 of Chart.

Continue to work back and forth in rows of sc AND change yarn color following Chart until all 150 rows of Chart have been completed.

Fasten off.

For thousands of free patterns, visit our website www.LionBrand.com

To order visit our website www.lionbrand.com or call: (800) 258-YARN (9276) any time!

Copyright ©1998-2021 Lion Brand Yarn Company, all rights reserved. No pattern or other material may be reproduced -- mechanically, electronically, or by any other means, including photocopying - without written permission of Lion Brand Yarn Company.

FINISHING

Edging

From RS, draw up a loop of B in any corner.

Round 1: Ch 1, sc evenly spaced around outside edge of Throw working 3 sc in each corner; join with slip st in first sc.

Fasten off.

Weave in ends.

ABBREVIATIONS

ch = chain

RS = right side

sc = single crochet

st(s) = stitch(es)

WS = wrong side

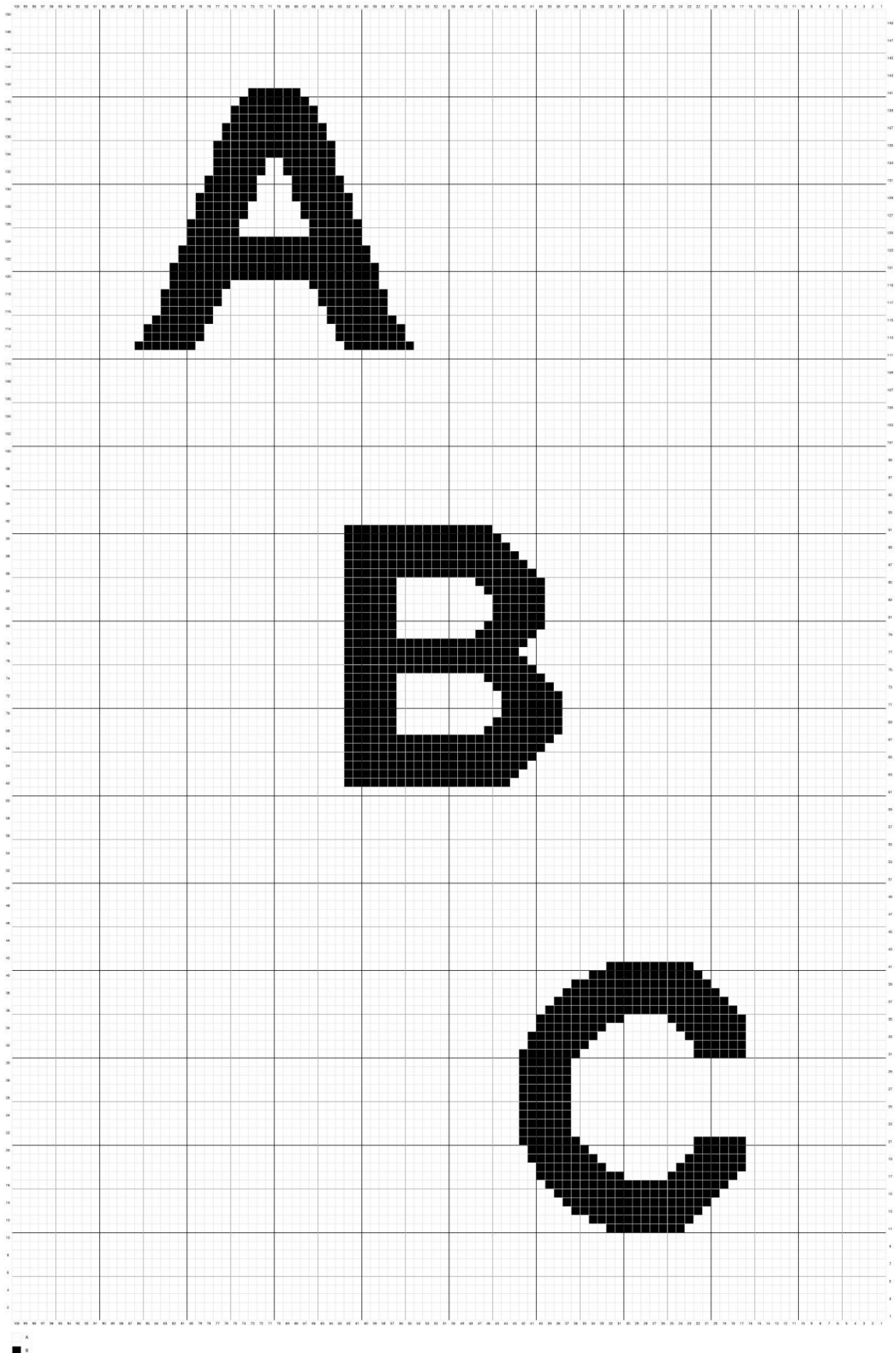
Every effort has been made to produce accurate and complete instructions. We cannot be responsible for variance of individual knitters or crocheters, human error, or typographical mistakes.

©2021 Lion Brand Yarn Company, all rights reserved.

For thousands of free patterns, visit our website www.LionBrand.com

To order visit our website www.lionbrand.com or call: (800) 258-YARN (9276) any time!

Copyright ©1998-2021 Lion Brand Yarn Company, all rights reserved. No pattern or other material may be reproduced -- mechanically, electronically, or by any other means, including photocopying - without written permission of Lion Brand Yarn Company.



For thousands of free patterns, visit our website www.LionBrand.com

To order visit our website www.lionbrand.com or call: (800) 258-YARN (9276) any time!

Copyright ©1998-2021 Lion Brand Yarn Company, all rights reserved. No pattern or other material may be reproduced -- mechanically, electronically, or by any other means, including photocopying - without written permission of Lion Brand Yarn Company.