



## Brake Installation and User Instructions



### Important warnings and instructions

#### 1. Important Warnings

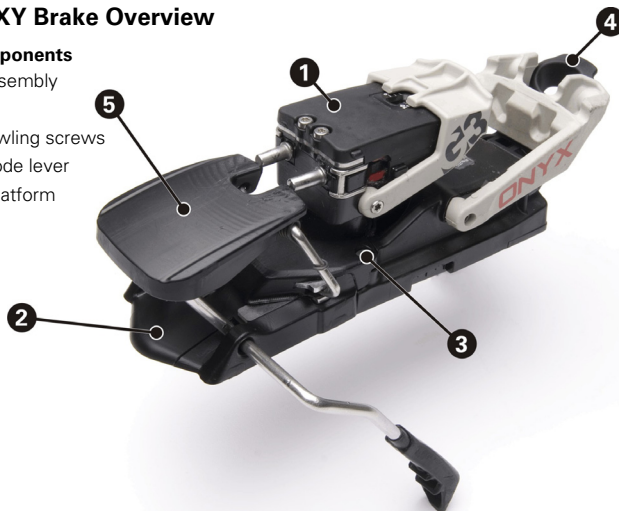
- Ski brake installation should be performed by an authorized dealer.
- Refer to the *ONYX User Operating Instructions* for important warnings and instructions regarding the use of Onyx bindings.
- Refer to the *Onyx Mounting and Installation Instructions* included with the binding for binding mounting and assembly instructions.
- Only G3 Onyx ski brakes should be used with Onyx bindings.

- The use of a ski brake doesn't guarantee that a ski will be controlled under all circumstances (problems may arise when skiing in deep snow).
- Only use a brake that is properly sized for the width of the ski.
- The use of any accessory, such as the ski brake, with the Onyx binding **will affect the binding release values**.
- Winter Backcountry travel is inherently dangerous. There is always the risk of serious injury or death. **You are solely responsible for you actions and decisions.** Familiarize yourself with the use of this product, its limitations and capabilities. Learn proper skiing techniques, avalanche awareness and exercise good judgment in conjunction with using this product properly. Use this equipment and ski at your own risk.

## 2. ONXY Brake Overview

### 2.1. Key Components

1. Heel Assembly
2. Brake
3. Heel cowlings screws
4. Heel mode lever
5. Brake Platform



- Switch the heel to tour mode by using the heel mode lever (4)
- Install the Onyx Ski Brake (2) by sliding it onto the heel assembly (1) from the front.
- Secure the brake (2) to the heel assembly (1) by installing the heel cowlings screws (3) with either a #1 phillips or a #1 Pozidrive screwdriver.
- Torque the heel cowlings screws (3) to **1.1Nm**.

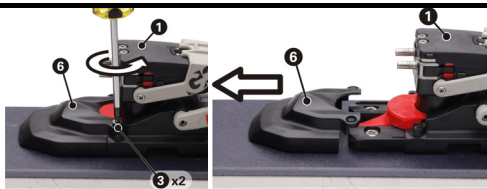


### 2.2. Installation of the ski brake to the heel assembly



**Note:** Binding must be mounted to ski before installing the ski brake. Refer to the *Onyx Mounting and Installation Instructions* included with the binding for binding mounting and assembly instructions.

- If the front heel cowlings (6) is installed, remove it from the heel assembly (1) by removing the heel cowlings screws (3) as shown and sliding it off the heel assembly.



**CAUTION:** The use of any accessory, such as the ski brake, with the Onyx binding will affect the binding release values

### 2.3. Checks and Functional Tests for Brake

- After installing the ski brake the release values should be verified by a binding test device, since the indicated release settings may not represent the actual release value.
- Check that the chosen brake is sized properly and ensure the brake is able to deploy reliably without catching on the ski. Switch the heel to ski mode and then squeeze the brake flat by pushing down on the brake platform (5). When the brake is released from this position it should not interfere with the ski during deployment. If there is interference, select the next larger brake size.
- Check that the brake latches down in tour mode, and that it deploys when switched back to ski mode from tour mode.

### 3. Detailed Instructions and Warning for Proper Use

- Before reading this section you should read the *ONYX User Operating Instructions* to be familiar with the operation of the binding without the brake, and then read this section to understand the proper operation of the brake.

#### 3.1. Stepping Into Ski Mode with brake

- Ensure the heel is in ski mode, and step into the toe normally.
- Engage the heel after the toe is engaged by simply stepping down and weighting the heel. You should hear an audible click.



- The brake should now be stowed, as shown, and ready to deploy in the event of release.



#### 3.2. Stepping Into Tour Mode with brake

- Ensure the heel is in tour mode, and step into the toe normally.
- The brake has been designed so that it can remain deployed to make stepping into tour mode easier. After stepping into the toe the brake can then be stowed by simply weighting the heel. You should hear an audible click.
- The brake should now be stowed for touring as shown.



- To step into the binding with the heel lifts deployed, manually latch the brake down prior to stepping in as shown. With the heel lifts deployed, you will be unable to latch the brake for touring as shown.



**CAUTION:** Never deploy the heel lifts without first latching down the brake. Doing so will prevent you from stowing the brake and could cause damage, void the warranty and could put the skier at risk.

### 4. Maintenance and Storage

- After every use the binding and brake should be cleaned with a damp rag to remove any dirt or dust. Do not use any other kind of lubricants, grease, solvents, cleaning products or pressurized devices.
- Store G3 Onyx bindings in ski mode (toe and heel) in an environment where there aren't large fluctuations in temperature and humidity from standard conditions. Avoid environments with excessive heat (ie. next to furnaces, heating elements or water heaters).
- G3 recommends that at the beginning of each season and/or after 60 days of skiing, G3 Onyx bindings be checked by an authorized G3 dealer and have the release setting recalibrated.
- Do not apply any lubricants to the binding other than original G3 Binding Lubricant. Use of lubricants other than original G3 Binding Lubricant will void the warranty and can damage the binding, greatly reducing the strength of parts and may result in bodily injury or death.

**For detailed interactive videos demonstrating the operation of the ONYX binding Please visit**

<http://g3onyx.com> or

<http://www.genuineguidegear.com>

### 5. Warranty

- Please visit <http://www.genuineguidegear.com/service/g3-product-warranty> for complete warranty information.