

kirei

EchoTile Vee Pattern
Installation Guides

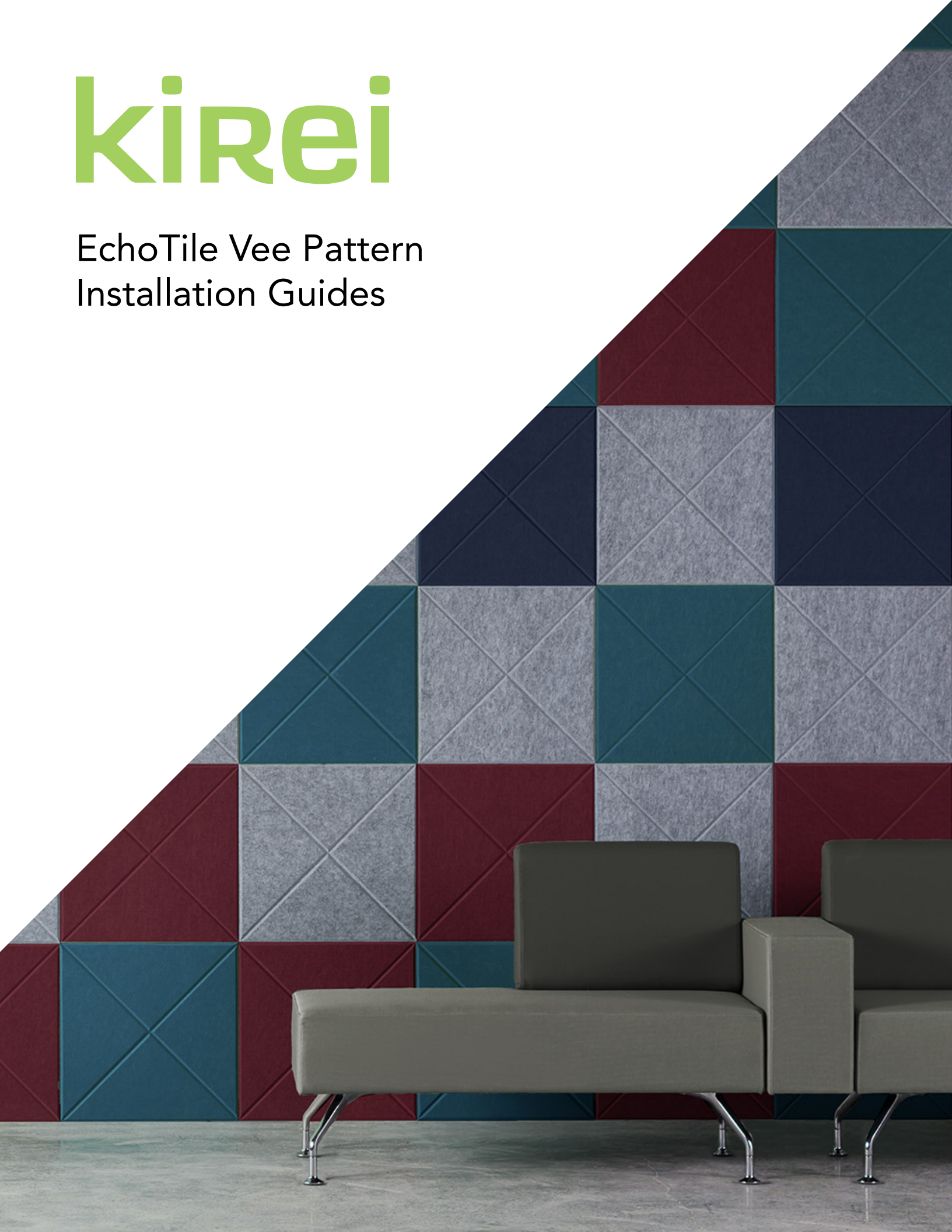


Table of Contents

1. [EchoTile Vee Tile Installation](#)
2. [EchoTile Vee Forward Plus](#)
3. [EchoTile Vee Blox](#)
4. [EchoTile Vee Knot](#)

EchoTile Vee Installation Guide

What's included in a box:

- 4 Vee Tiles
- 1 bag of 25 adhesive tabs

Tools needed (not included):

- Level
- Measuring Tape
- Pencil

Notes: Adhesive tabs may pull finish or paint off of the wall when removed. It is not recommended to use adhesive tabs on wood, brick, or other textured surfaces. Construction adhesive is recommended for installation on textured surfaces, ceilings, and high traffic areas. Adhesive tabs are not reusable. If a tile was placed incorrectly, re-apply the tile to the surface using a new set of adhesive tabs.

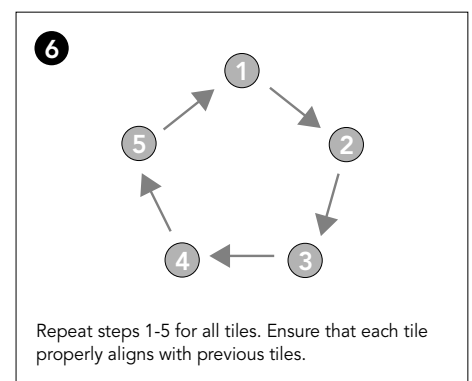
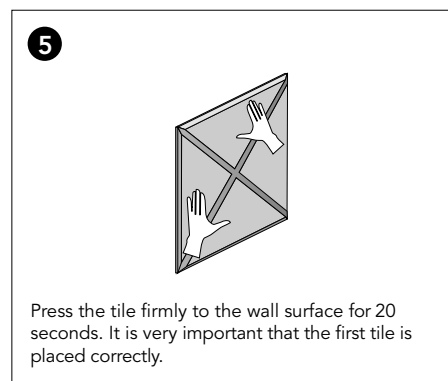
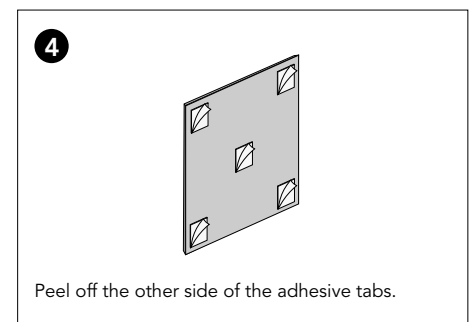
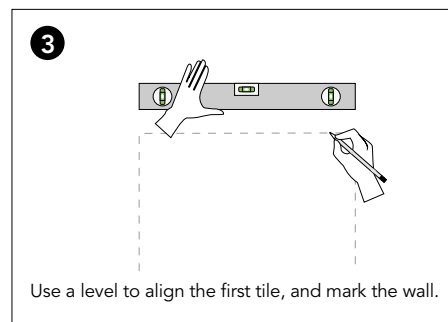
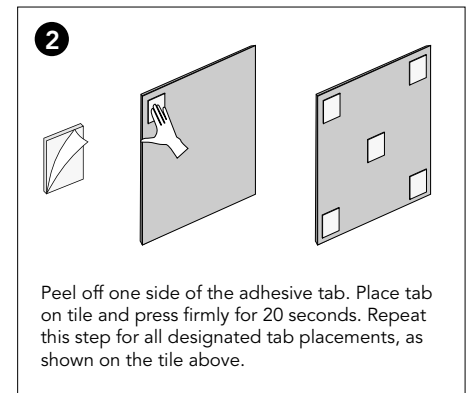
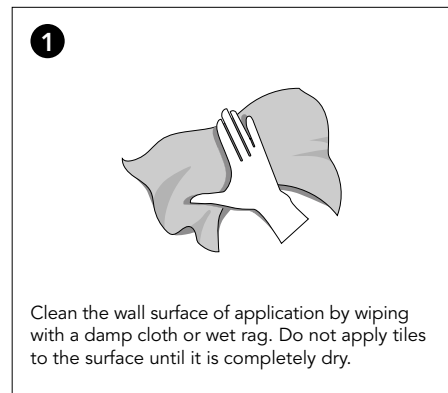
Tiles are cut on a grain and can reflect light differently, looking slightly lighter or darker depending on placement. When applying the tiles, ensure the color of the tiles complements your light source. Rotate the tile if color varies from the adjacent tile.

[Click here to see a list of all the Vee Tile Patterns](#)

Installation

Vee Tiles require (5) 3"x3" adhesive tabs per tile for proper mounting and installation. Easy peel tabs have the same amount of adhesive on each side and will adhere to painted surfaces, dry wall, or smooth cement. Order extra adhesive tabs at www.store.kireiusa.com.

How to apply easy peel adhesive tabs:



EchoTile Vee Forward Plus Installation Guide

What's included in a box:

- **Opt 1)** 4 Speckled Gray
4 Pacific
4 Navy
- **Opt 2)** 4 Pacific
4 Speckled Gray
4 Wine
- **Opt 3)** 4 Navy
4 Pacific
4 Mushroom
- 3 bags of 25 adhesive tabs

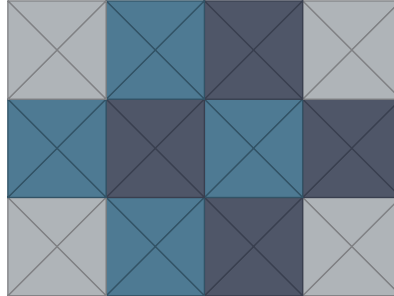
Tools needed (not included):

- Level
- Measuring Tape
- Pencil

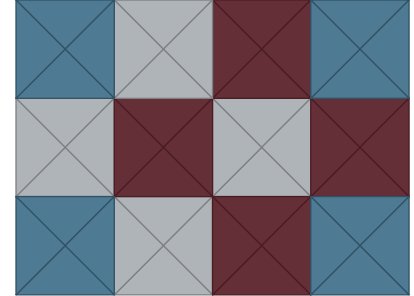
Notes: Adhesive tabs may pull finish or paint off of the wall when removed. It is not recommended to use adhesive tabs on wood, brick, or other textured surfaces. Construction adhesive is recommended for installation on textured surfaces, ceilings, and high traffic areas. Adhesive tabs are not reusable. If a tile was placed incorrectly, re-apply the tile to the surface using a new set of adhesive tabs.

Tiles are cut on a grain and can reflect light differently, looking slightly lighter or darker depending on placement. When applying the tiles, ensure the color of the tiles complements your light source. Rotate the tile if color varies from the adjacent tile.

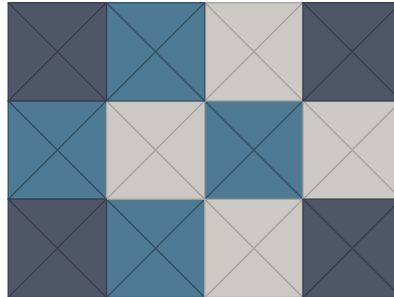
[Click here to view the Vee Tile Installation Guide](#)



Option 1: Vee Cool Serenity
Speckled Gray, Pacific, and Navy



Option 2: Vee Iron & Wine
Pacific, Speckled Gray, and Wine



Option 3: Vee Coastline
Navy, Pacific, and Mushroom

Installation

Vee Tiles require (5) 3"x3" adhesive tabs per tile for proper mounting and installation. Easy peel tabs have the same amount of adhesive on each side and will adhere to painted surfaces, dry wall, or smooth cement. Patterns are made to be repeatable. If more tiles are desired visit us at www.store.kireiusa.com to purchase another pattern bundle or extra adhesive tabs.

How to apply adhesive tabs and install tiles:

1. Clean the wall surface of application by wiping with a damp cloth or wet rag. Do not apply tiles to the surface until it is completely dry.
2. Peel off one side of the adhesive tab. Place tab on tile and press firmly for 20 seconds. Repeat this step for all designated tab placements.
3. Measure out and mark all pattern edges on the wall for desired placement. Use a level to align the first tile.
4. Begin installing with the bottom left corner of the pattern and work your way up and right.
6. Peel off the other side of the adhesive tabs.
7. Press the tile firmly to the wall surface for 20 seconds. It is very important that the first tile is placed correctly.
8. Repeat steps 1-5 for all tiles. Ensure that each tile properly aligns with previous tiles.

EchoTile Vee Blox Installation Guide

What's included in a box:

- **Opt 1)** 4 Navy
4 Pacific
- **Opt 2)** 4 Wine
4 Speckled Gray
- **Opt 3)** 4 Navy
4 Mushroom
- 2 bags of 25 adhesive tabs

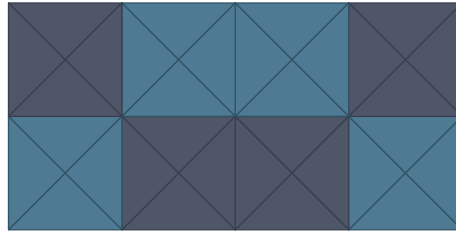
Tools needed (not included):

- Level
- Measuring Tape
- Pencil

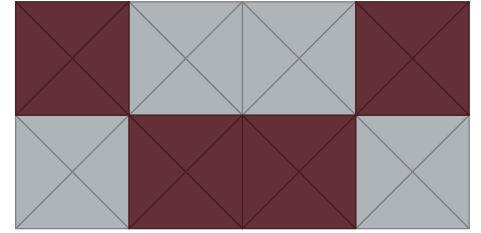
Notes: Adhesive tabs may pull finish or paint off of the wall when removed. It is not recommended to use adhesive tabs on wood, brick, or other textured surfaces. Construction adhesive is recommended for installation on textured surfaces, ceilings, and high traffic areas. Adhesive tabs are not reusable. If a tile was placed incorrectly, re-apply the tile to the surface using a new set of adhesive tabs.

Tiles are cut on a grain and can reflect light differently, looking slightly lighter or darker depending on placement. When applying the tiles, ensure the color of the tiles complements your light source. Rotate the tile if color varies from the adjacent tile.

[Click here to view the Vee Tile Installation Guide](#)



Option 1: Vee Cool Serenity | Navy and Pacific



Option 1: Vee Cool Serenity | Wine and Speckled Gray



Option 3: Vee Coastline | Navy and Mushroom

Installation

Vee Tiles require (5) 3"x3" adhesive tabs per tile for proper mounting and installation. Easy peel tabs have the same amount of adhesive on each side and will adhere to painted surfaces, dry wall, or smooth cement. Patterns are made to be repeatable. If more tiles are desired visit us at www.store.kireiusa.com to purchase another pattern bundle or extra adhesive tabs.

How to apply adhesive tabs and install tiles:

1. Clean the wall surface of application by wiping with a damp cloth or wet rag. Do not apply tiles to the surface until it is completely dry.
2. Peel off one side of the adhesive tab. Place tab on tile and press firmly for 20 seconds. Repeat this step for all designated tab placements.
3. Measure out and mark all pattern edges on the wall for desired placement. Use a level to align the first tile.
4. Begin installing with the bottom left corner of the pattern and work your way up and right.
6. Peel off the other side of the adhesive tabs.
7. Press the tile firmly to the wall surface for 20 seconds. It is very important that the first tile is placed correctly.
8. Repeat steps 1-5 for all tiles. Ensure that each tile properly aligns with previous tiles.

EchoTile Vee Knot Installation Guide

What's included in a box:

- **Opt 1)** 4 Pacific
4 Speckled Gray
- **Opt 2)** 4 Pacific
4 Wine
- **Opt 3)** 4 Navy
4 Mushroom
- 2 bags of 25 adhesive tabs

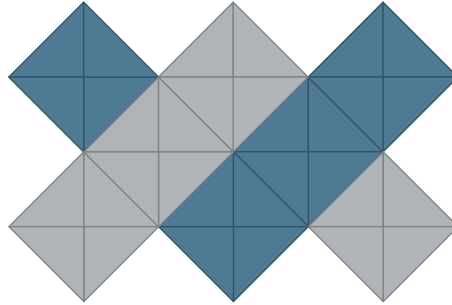
Tools needed (not included):

- Level
- Measuring Tape
- Pencil

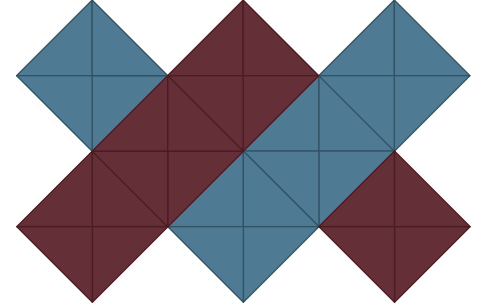
Notes: Adhesive tabs may pull finish or paint off of the wall when removed. It is not recommended to use adhesive tabs on wood, brick, or other textured surfaces. Construction adhesive is recommended for installation on textured surfaces, ceilings, and high traffic areas. Adhesive tabs are not reusable. If a tile was placed incorrectly, re-apply the tile to the surface using a new set of adhesive tabs.

Tiles are cut on a grain and can reflect light differently, looking slightly lighter or darker depending on placement. When applying the tiles, ensure the color of the tiles complements your light source. Rotate the tile if color varies from the adjacent tile.

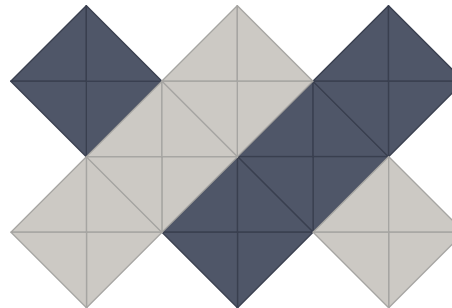
[Click here to view the Vee Tile Installation Guide](#)



Option 1: Vee Cool Serenity | Pacific and Speckled Gray



Option 1: Vee Cool Serenity | Pacific and Wine



Option 3: Vee Coastline | Navy and Mushroom

Installation

Vee Tiles require (5) 3"x3" adhesive tabs per tile for proper mounting and installation. Easy peel tabs have the same amount of adhesive on each side and will adhere to painted surfaces, dry wall, or smooth cement. Patterns are made to be repeatable. If more tiles are desired visit us at www.store.kireiusa.com to purchase another pattern bundle or extra adhesive tabs.

How to apply adhesive tabs and install tiles:

1. Clean the wall surface of application by wiping with a damp cloth or wet rag. Do not apply tiles to the surface until it is completely dry.
2. Peel off one side of the adhesive tab. Place tab on tile and press firmly for 20 seconds. Repeat this step for all designated tab placements.
3. Measure out and mark all pattern edges on the wall for desired placement. Use a level to align the first tile.
4. Begin installing with the bottom left corner of the pattern and work your way up and right.
6. Peel off the other side of the adhesive tabs.
7. Press the tile firmly to the wall surface for 20 seconds. It is very important that the first tile is placed correctly.
8. Repeat steps 1-5 for all tiles. Ensure that each tile properly aligns with previous tiles.