

kirei

EchoTile Geometry Pattern
Installation Guides



Table of Contents

1. [EchoTile Geometry–Delta Tile Installation](#)
2. [EchoTile Geometry–Oblong Tile Installation](#)
3. [EchoTile Geometry–Square Tile Installation](#)
4. [EchoTile Geometry Bend](#)
5. [EchoTile Geometry Spiral](#)
6. [EchoTile Geometry Angle](#)
7. [EchoTile Geometry Maximal](#)
8. [EchoTile Geometry Block](#)
9. [EchoTile Geometry Invader](#)

EchoTile Geometry–Delta Installation Guide

What's included in a box:

- 20 Delta Tiles
- 1 bag of 70 adhesive tabs

Tools needed (not included):

- Level
- Measuring Tape
- Pencil

Notes: Adhesive tabs may pull finish or paint off of the wall when removed. It is not recommended to use adhesive tabs on wood, brick, or other textured surfaces. Construction adhesive is recommended for installation on textured surfaces, ceilings, and high traffic areas. Adhesive tabs are not reusable. If a tile was placed incorrectly, re-apply the tile to the surface using a new set of adhesive tabs.

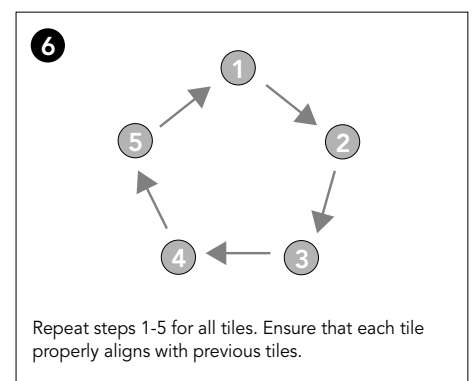
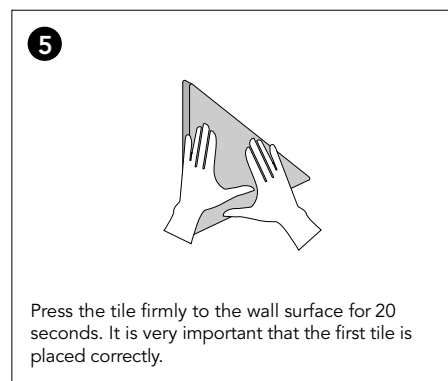
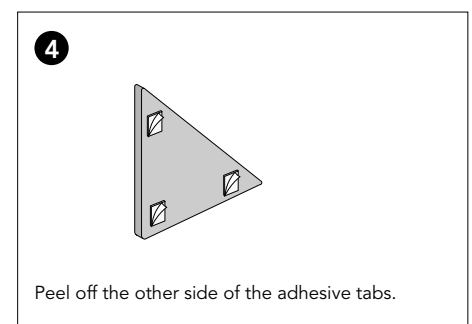
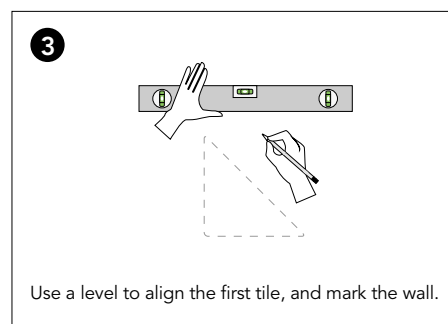
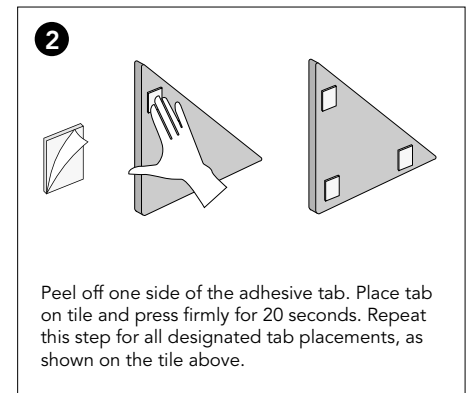
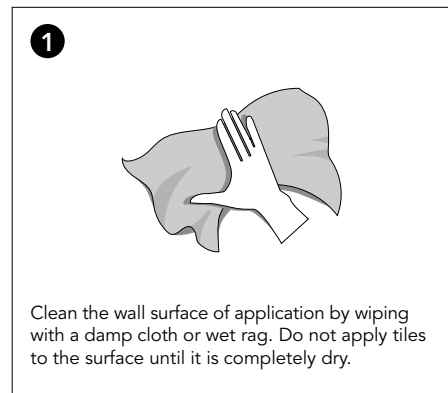
Tiles are cut on a grain and can reflect light differently, looking slightly lighter or darker depending on placement. When applying the tiles, ensure the color of the tiles complements your light source. Rotate the tile if color varies from the adjacent tile.

[Click here to see a list of all the Geometry Tile Patterns](#)

Installation

Delta Tiles require (3) 1"x1" adhesive tabs per tile for proper mounting and installation. Easy peel tabs have the same amount of adhesive on each side and will adhere to painted surfaces, dry wall, or smooth cement. Order extra adhesive tabs at www.store.kireiusa.com.

How to apply easy peel adhesive tabs:



EchoTile Geometry–Oblong Installation Guide

What's included in a box:

- 20 Oblong Tiles
- 1 bag of 70 adhesive tabs

Tools needed (not included):

- Level
- Measuring Tape
- Pencil

Notes: Adhesive tabs may pull finish or paint off of the wall when removed. It is not recommended to use adhesive tabs on wood, brick, or other textured surfaces. Construction adhesive is recommended for installation on textured surfaces, ceilings, and high traffic areas. Adhesive tabs are not reusable. If a tile was placed incorrectly, re-apply the tile to the surface using a new set of adhesive tabs.

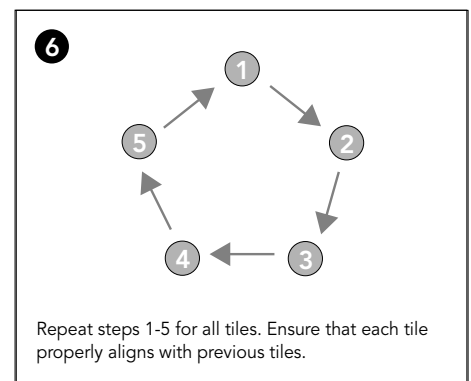
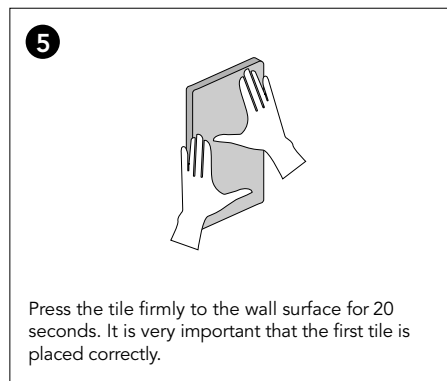
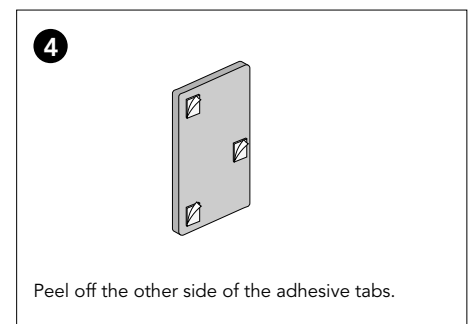
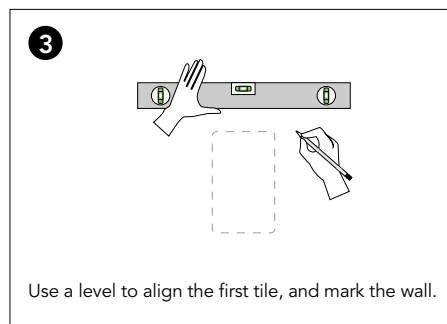
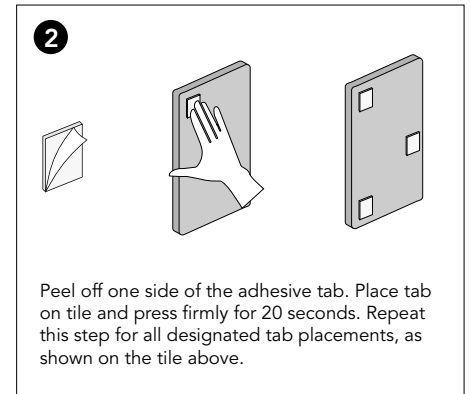
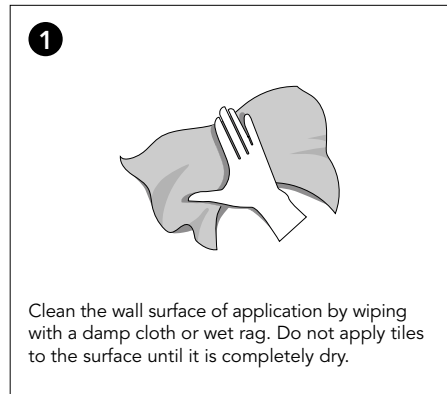
Tiles are cut on a grain and can reflect light differently, looking slightly lighter or darker depending on placement. When applying the tiles, ensure the color of the tiles complements your light source. Rotate the tile if color varies from the adjacent tile.

[Click here to see a list of all the Geometry Tile Patterns](#)

Installation

Oblong Tiles require (3) 1"x1" adhesive tabs per tile for proper mounting and installation. Easy peel tabs have the same amount of adhesive on each side and will adhere to painted surfaces, dry wall, or smooth cement. Order extra adhesive tabs at www.store.kireiusa.com.

How to apply easy peel adhesive tabs:



EchoTile Geometry–Square Installation Guide

What's included in a box:

- 10 Square Tiles
- 1 bag of 50 adhesive tabs

Tools needed (not included):

- Level
- Measuring Tape
- Pencil

Notes: Adhesive tabs may pull finish or paint off of the wall when removed. It is not recommended to use adhesive tabs on wood, brick, or other textured surfaces. Construction adhesive is recommended for installation on textured surfaces, ceilings, and high traffic areas. Adhesive tabs are not reusable. If a tile was placed incorrectly, re-apply the tile to the surface using a new set of adhesive tabs.

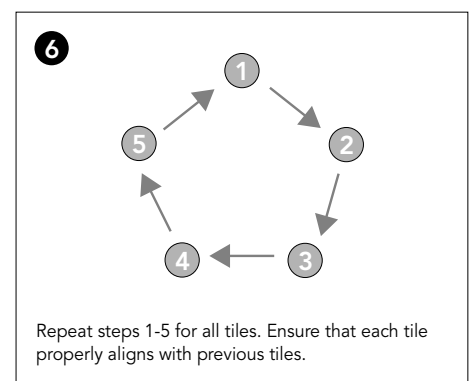
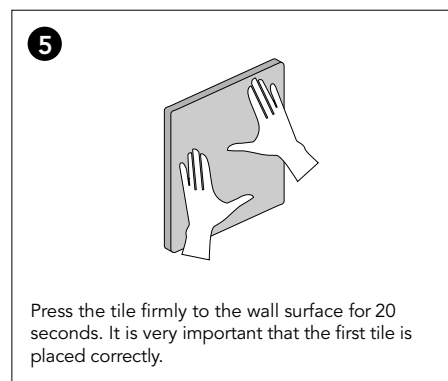
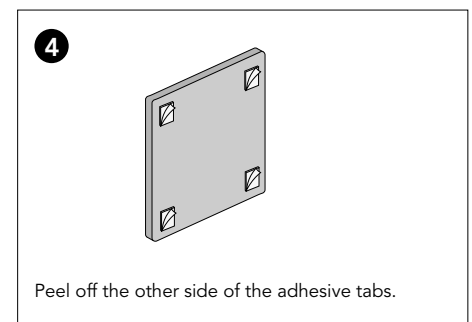
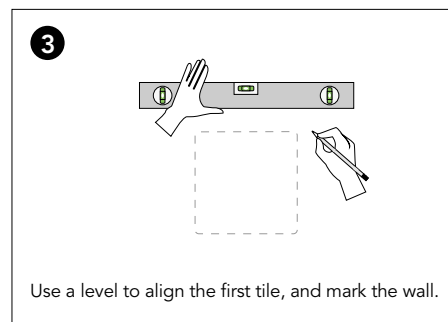
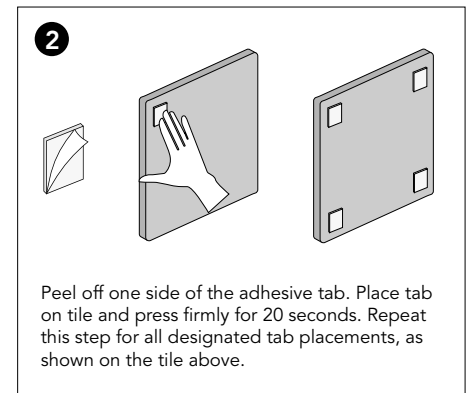
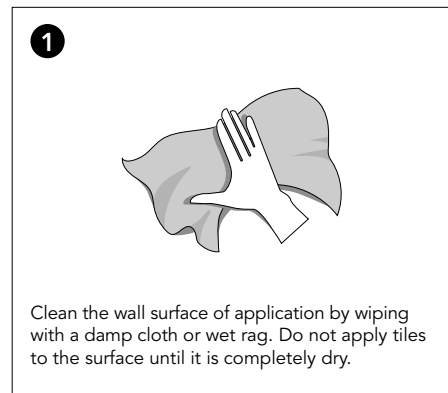
Tiles are cut on a grain and can reflect light differently, looking slightly lighter or darker depending on placement. When applying the tiles, ensure the color of the tiles complements your light source. Rotate the tile if color varies from the adjacent tile.

[Click here to see a list of all the Geometry Tile Patterns](#)

Installation

Square Tiles require (4) 1"×1" adhesive tabs per tile for proper mounting and installation. Easy peel tabs have the same amount of adhesive on each side and will adhere to painted surfaces, dry wall, or smooth cement. Order extra adhesive tabs at www.store.kireiusa.com.

How to apply easy peel adhesive tabs:



EchoTile Geometry Bend Installation Guide

What's included in a box:

- **Opt 1)** 40 Oblong Speckled Gray
40 Oblong Pacific
- **Opt 2)** 40 Oblong Pacific
40 Oblong Wine
- **Opt 3)** 40 Oblong Pacific
40 Oblong Navy
- 4 bags of 70 adhesive tabs

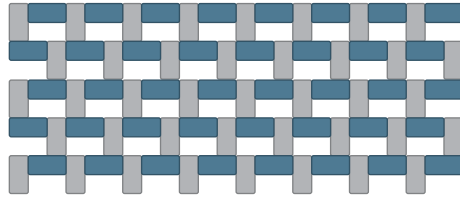
Tools needed (not included):

- Level
- Measuring Tape
- Pencil

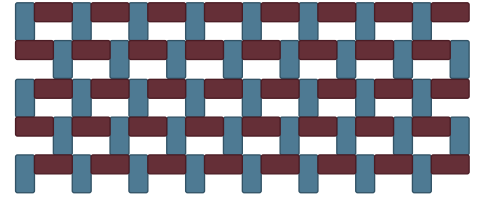
Notes: Adhesive tabs may pull finish or paint off of the wall when removed. It is not recommended to use adhesive tabs on wood, brick, or other textured surfaces. Construction adhesive is recommended for installation on textured surfaces, ceilings, and high traffic areas. Adhesive tabs are not reusable. If a tile was placed incorrectly, re-apply the tile to the surface using a new set of adhesive tabs.

Tiles are cut on a grain and can reflect light differently, looking slightly lighter or darker depending on placement. When applying the tiles, ensure the color of the tiles complements your light source. Rotate the tile if color varies from the adjacent tile.

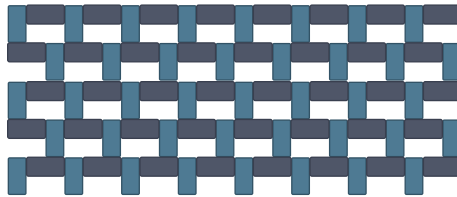
[Click here to view the Oblong Tile Installation Guide](#)



Option 1: Geo Cool Serenity | *Speckled Gray and Pacific*



Option 2: Geo Iron & Wine | *Pacific and Wine*



Option 3: Geo Cool Serenity | *Pacific and Navy*

Installation

Oblong Tiles require (3) 1"x1" adhesive tabs per tile for proper mounting and installation. Easy peel tabs have the same amount of adhesive on each side and will adhere to painted surfaces, dry wall, or smooth cement. Patterns are made to be repeatable. If more tiles are desired visit us at www.store.kireiusa.com to purchase another pattern bundle or extra adhesive tabs.

How to apply adhesive tabs and install tiles:

1. Clean the wall surface of application by wiping with a damp cloth or wet rag. Do not apply tiles to the surface until it is completely dry.
2. Peel off one side of the adhesive tab. Place tab on tile and press firmly for 20 seconds. Repeat this step for all designated tab placements.
3. Measure out and mark all pattern edges on the wall for desired placement. Use a level to align the first tile.
4. Begin installing with the bottom left corner of the pattern and work your way up and right.
6. Peel off the other side of the adhesive tabs.
7. Press the tile firmly to the wall surface for 20 seconds. It is very important that the first tile is placed correctly.
8. Repeat steps 1-5 for all tiles. Ensure that each tile properly aligns with previous tiles.

EchoTile Geometry Spiral Installation Guide

What's included in a box:

- **Opt 1)** 40 Oblong Pacific
40 Oblong Navy
- **Opt 2)** 40 Oblong Pacific
40 Oblong Wine
- **Opt 3)** 40 Oblong Mushroom
40 Oblong Navy
- 4 bags of 70 adhesive tabs

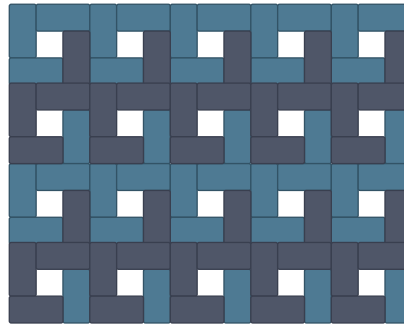
Tools needed (not included):

- Level
- Measuring Tape
- Pencil

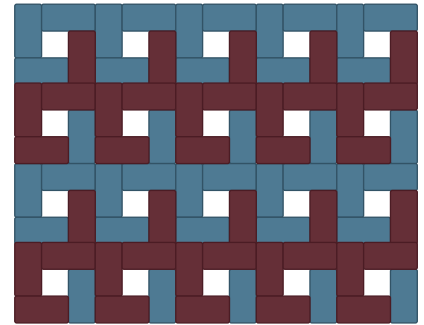
Notes: Adhesive tabs may pull finish or paint off of the wall when removed. It is not recommended to use adhesive tabs on wood, brick, or other textured surfaces. Construction adhesive is recommended for installation on textured surfaces, ceilings, and high traffic areas. Adhesive tabs are not reusable. If a tile was placed incorrectly, re-apply the tile to the surface using a new set of adhesive tabs.

Tiles are cut on a grain and can reflect light differently, looking slightly lighter or darker depending on placement. When applying the tiles, ensure the color of the tiles complements your light source. Rotate the tile if color varies from the adjacent tile.

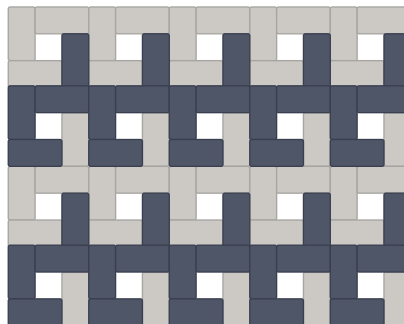
[Click here to view the Oblong Tile Installation Guide](#)



Option 1: Geo Cool Serenity | Pacific and Navy



Option 2: Geo Iron & Wine | Pacific and Wine



Option 3: Geo Cool Serenity | Mushroom and Navy

Installation

Oblong Tiles require (3) 1"x1" adhesive tabs per tile for proper mounting and installation. Easy peel tabs have the same amount of adhesive on each side and will adhere to painted surfaces, dry wall, or smooth cement. Patterns are made to be repeatable. If more tiles are desired visit us at www.store.kireiusa.com to purchase another pattern bundle or extra adhesive tabs.

How to apply adhesive tabs and install tiles:

1. Clean the wall surface of application by wiping with a damp cloth or wet rag. Do not apply tiles to the surface until it is completely dry.
2. Peel off one side of the adhesive tab. Place tab on tile and press firmly for 20 seconds. Repeat this step for all designated tab placements.
3. Measure out and mark all pattern edges on the wall for desired placement. Use a level to align the first tile.
4. Begin installing with the bottom left corner of the pattern and work your way up and right.
6. Peel off the other side of the adhesive tabs.
7. Press the tile firmly to the wall surface for 20 seconds. It is very important that the first tile is placed correctly.
8. Repeat steps 1-5 for all tiles. Ensure that each tile properly aligns with previous tiles.

EchoTile Geometry Angle Installation Guide

What's included in a box:

- **Opt 1)** 20 Delta Navy
20 Delta Pacific
- **Opt 2)** 20 Delta Wine
20 Delta Speckled Gray
- **Opt 3)** 20 Delta Pacific
20 Delta Mushroom
- 2 bags of 70 adhesive tabs

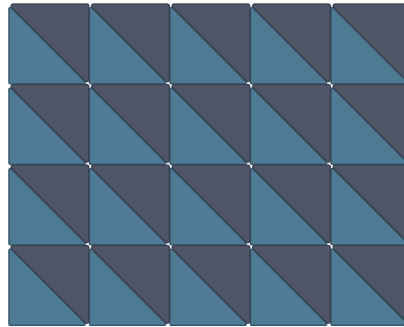
Tools needed (not included):

- Level
- Measuring Tape
- Pencil

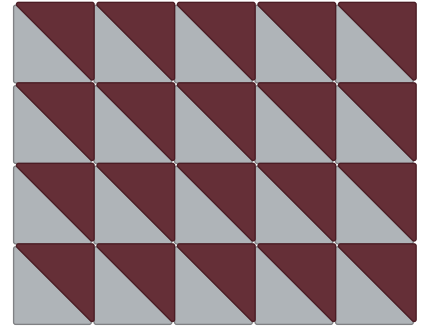
Notes: Adhesive tabs may pull finish or paint off of the wall when removed. It is not recommended to use adhesive tabs on wood, brick, or other textured surfaces. Construction adhesive is recommended for installation on textured surfaces, ceilings, and high traffic areas. Adhesive tabs are not reusable. If a tile was placed incorrectly, re-apply the tile to the surface using a new set of adhesive tabs.

Tiles are cut on a grain and can reflect light differently, looking slightly lighter or darker depending on placement. When applying the tiles, ensure the color of the tiles complements your light source. Rotate the tile if color varies from the adjacent tile.

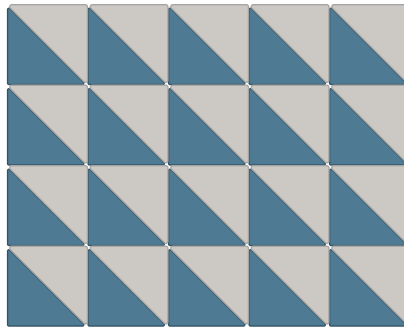
[Click here to view the Delta Tile Installation Guide](#)



Option 1: Geo Cool Serenity | Navy and Pacific



Option 2: Geo Iron & Wine | Wine and Speckled Gray



Option 3: Geo Cool Serenity | Pacific and Mushroom

Installation

Delta Tiles require (3) 1"x1" adhesive tabs per tile for proper mounting and installation. Easy peel tabs have the same amount of adhesive on each side and will adhere to painted surfaces, dry wall, or smooth cement. Patterns are made to be repeatable. If more tiles are desired visit us at www.store.kireiusa.com to purchase another pattern bundle or extra adhesive tabs.

How to apply easy peel adhesive tabs:

1. Clean the wall surface of application by wiping with a damp cloth or wet rag. Do not apply tiles to the surface until it is completely dry.
2. Peel off one side of the adhesive tab. Place tab on tile and press firmly for 20 seconds. Repeat this step for all designated tab placements.
3. Measure out and mark all pattern edges on the wall for desired placement. Use a level to align the first tile.
4. Begin installing with the bottom left corner of the pattern and work your way up and right.
6. Peel off the other side of the adhesive tabs.
7. Press the tile firmly to the wall surface for 20 seconds. It is very important that the first tile is placed correctly.
8. Repeat steps 1-5 for all tiles. Ensure that each tile properly aligns with previous tiles.

EchoTile Geometry Maximal Installation Guide

What's included in a box:

- **Opt 1)** 20 Delta Navy
20 Delta Pacific
80 Oblong Speckled Gray
- **Opt 2)** 20 Delta Wine
20 Delta Speckled Gray
80 Oblong Pacific
- **Opt 3)** 20 Delta Pacific
20 Delta Mushroom
80 Oblong Navy
- 6 bags of 70 adhesive tabs

Tools needed (not included):

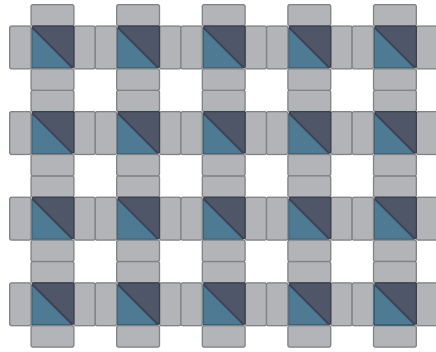
- Level
- Measuring Tape
- Pencil

Notes: Adhesive tabs may pull finish or paint off of the wall when removed. It is not recommended to use adhesive tabs on wood, brick, or other textured surfaces. Construction adhesive is recommended for installation on textured surfaces, ceilings, and high traffic areas. Adhesive tabs are not reusable. If a tile was placed incorrectly, re-apply the tile to the surface using a new set of adhesive tabs.

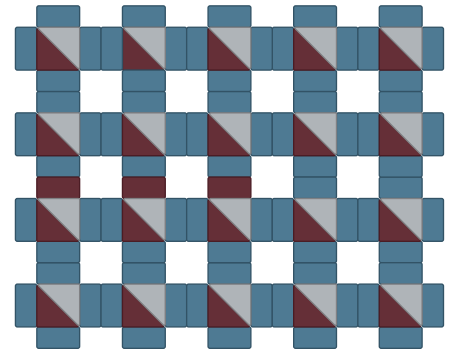
Tiles are cut on a grain and can reflect light differently, looking slightly lighter or darker depending on placement. When applying the tiles, ensure the color of the tiles complements your light source. Rotate the tile if color varies from the adjacent tile.

[Click here to view the Delta Tile Installation Guide](#)

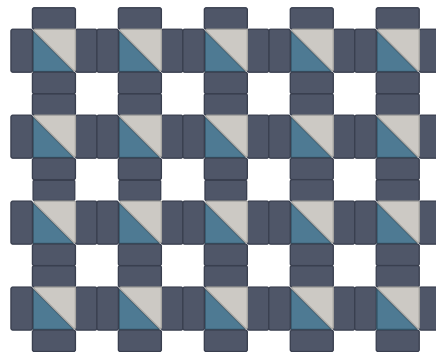
[Click here to view the Oblong Tile Installation Guide](#)



Option 1: Geo Cool Serenity
Navy, Pacific, and Speckled Gray



Option 2: Geo Iron & Wine
Wine, Speckled Gray, and Pacific



Option 3: Geo Cool Serenity | Navy, Pacific and Mushroom

Installation

Oblong and Delta Tiles require (3) 1"x1" adhesive tabs per tile for proper mounting and installation. Easy peel tabs have the same amount of adhesive on each side and will adhere to painted surfaces, dry wall, or smooth cement. Patterns are made to be repeatable. If more tiles are desired visit us at www.store.kireiusa.com to purchase another pattern bundle or extra adhesive tabs.

How to apply adhesive tabs and install tiles:

1. Clean the wall surface of application by wiping with a damp cloth or wet rag. Do not apply tiles to the surface until it is completely dry.
2. Peel off one side of the adhesive tab. Place tab on tile and press firmly for 20 seconds. Repeat this step for all designated tab placements.
3. Measure out and mark all pattern edges on the wall for desired placement. Use a level to align the first tile.
4. Begin installing with the bottom left corner of the pattern and work your way up and right.
6. Peel off the other side of the adhesive tabs.
7. Press the tile firmly to the wall surface for 20 seconds. It is very important that the first tile is placed correctly.
8. Repeat steps 1-5 for all tiles. Ensure that each tile properly aligns with previous tiles.

EchoTile Geometry Block Installation Guide

What's included in a box:

- **Opt 1)** 20 Square Speckled Gray
40 Oblong Pacific
- **Opt 2)** 20 Square Wine
40 Oblong Speckled Gray
- **Opt 3)** 20 Square Navy
40 Oblong Pacific
- 4 bags of 70 adhesive tabs

Tools needed (not included):

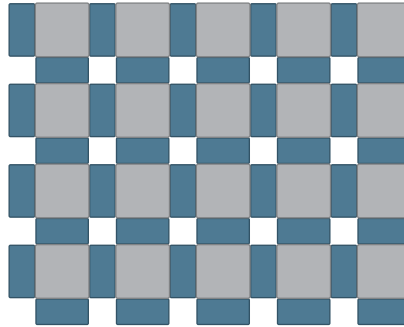
- Level
- Measuring Tape
- Pencil

Notes: Adhesive tabs may pull finish or paint off of the wall when removed. It is not recommended to use adhesive tabs on wood, brick, or other textured surfaces. Construction adhesive is recommended for installation on textured surfaces, ceilings, and high traffic areas. Adhesive tabs are not reusable. If a tile was placed incorrectly, re-apply the tile to the surface using a new set of adhesive tabs.

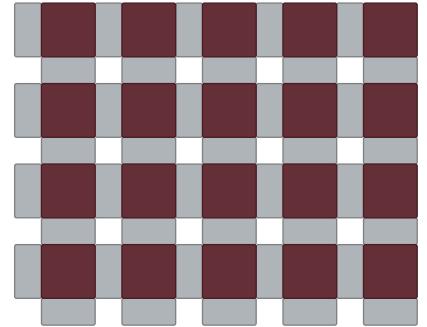
Tiles are cut on a grain and can reflect light differently, looking slightly lighter or darker depending on placement. When applying the tiles, ensure the color of the tiles complements your light source. Rotate the tile if color varies from the adjacent tile.

[Click here to view the Oblong Tile Installation Guide](#)

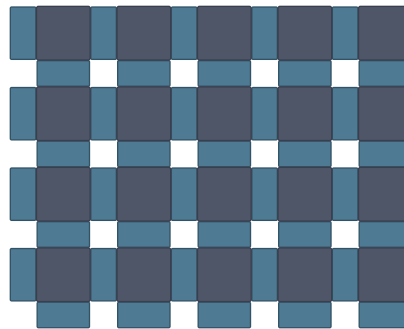
[Click here to view the Square Tile Installation Guide](#)



Option 1: Geo Cool Serenity | Speckled Gray and Pacific



Option 2: Geo Iron & Wine | Wine and Speckled Gray



Option 3: Geo Cool Serenity | Navy and Pacific

Installation

Geometry Tiles require (3—for Oblong) or (4—for Square) 1"x1" adhesive tabs per tile for proper mounting and installation. Easy peel tabs have the same amount of adhesive on each side and will adhere to painted surfaces, dry wall, or smooth cement. Patterns are made to be repeatable. If more tiles are desired visit us at www.store.kireiusa.com to purchase another pattern bundle or extra adhesive tabs.

How to apply adhesive tabs and install tiles:

1. Clean the wall surface of application by wiping with a damp cloth or wet rag. Do not apply tiles to the surface until it is completely dry.
2. Peel off one side of the adhesive tab. Place tab on tile and press firmly for 20 seconds. Repeat this step for all designated tab placements.
3. Measure out and mark all pattern edges on the wall for desired placement. Use a level to align the first tile.
4. Begin installing with the bottom left corner of the pattern and work your way up and right.
6. Peel off the other side of the adhesive tabs.
7. Press the tile firmly to the wall surface for 20 seconds. It is very important that the first tile is placed correctly.
8. Repeat steps 1-5 for all tiles. Ensure that each tile properly aligns with previous tiles.

EchoTile Geometry Invader Installation Guide

What's included in a box:

- **Opt 1)** 40 Delta Navy
40 Delta Speckled Gray
- **Opt 2)** 40 Delta Wine
40 Delta Pacific
- **Opt 3)** 40 Delta Navy
40 Delta Mushroom
- 4 bags of 70 adhesive tabs

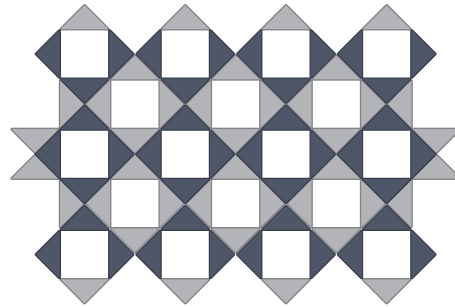
Tools needed (not included):

- Level
- Measuring Tape
- Pencil

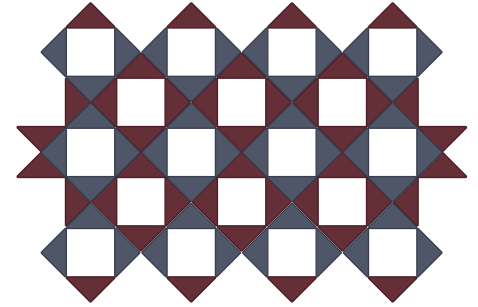
Notes: Adhesive tabs may pull finish or paint off of the wall when removed. It is not recommended to use adhesive tabs on wood, brick, or other textured surfaces. Construction adhesive is recommended for installation on textured surfaces, ceilings, and high traffic areas. Adhesive tabs are not reusable. If a tile was placed incorrectly, re-apply the tile to the surface using a new set of adhesive tabs.

Tiles are cut on a grain and can reflect light differently, looking slightly lighter or darker depending on placement. When applying the tiles, ensure the color of the tiles complements your light source. Rotate the tile if color varies from the adjacent tile.

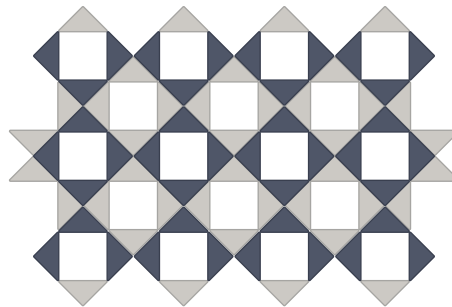
[Click here to view the Delta Tile Installation Guide](#)



Option 1: Geo Cool Serenity | Navy and Speckled Gray



Option 2: Geo Iron & Wine | Wine and Pacific



Geo Cool Serenity | Navy and Mushroom

Installation

Delta Tiles require (3) 1"x1" adhesive tabs per tile for proper mounting and installation. Easy peel tabs have the same amount of adhesive on each side and will adhere to painted surfaces, dry wall, or smooth cement. Patterns are made to be repeatable. If more tiles are desired visit us at www.store.kireiusa.com to purchase another pattern bundle or extra adhesive tabs.

How to apply adhesive tabs and install tiles:

1. Clean the wall surface of application by wiping with a damp cloth or wet rag. Do not apply tiles to the surface until it is completely dry.
2. Peel off one side of the adhesive tab. Place tab on tile and press firmly for 20 seconds. Repeat this step for all designated tab placements.
3. Measure out and mark all pattern edges on the wall for desired placement. Use a level to align the first tile.
4. Begin installing with the bottom left corner of the pattern and work your way up and right.
6. Peel off the other side of the adhesive tabs.
7. Press the tile firmly to the wall surface for 20 seconds. It is very important that the first tile is placed correctly.
8. Repeat steps 1-5 for all tiles. Ensure that each tile properly aligns with previous tiles.