

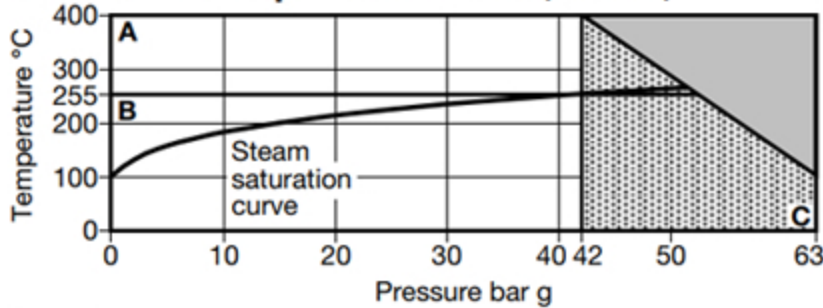
Spirax Sarco 1/2 - 1" Stainless Steel Steam Traps TD42-L



Features

- Thermodynamic Steam Trap.
- Stainless Steel body with ENP Finish.
- Screwed BSP with in-built strainer.

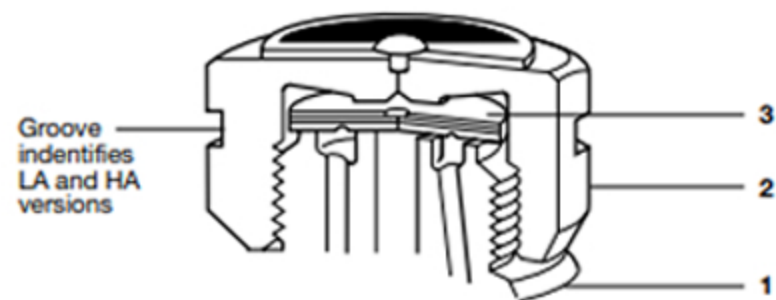
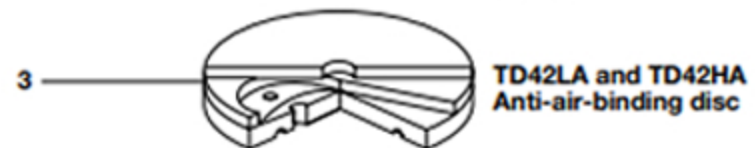
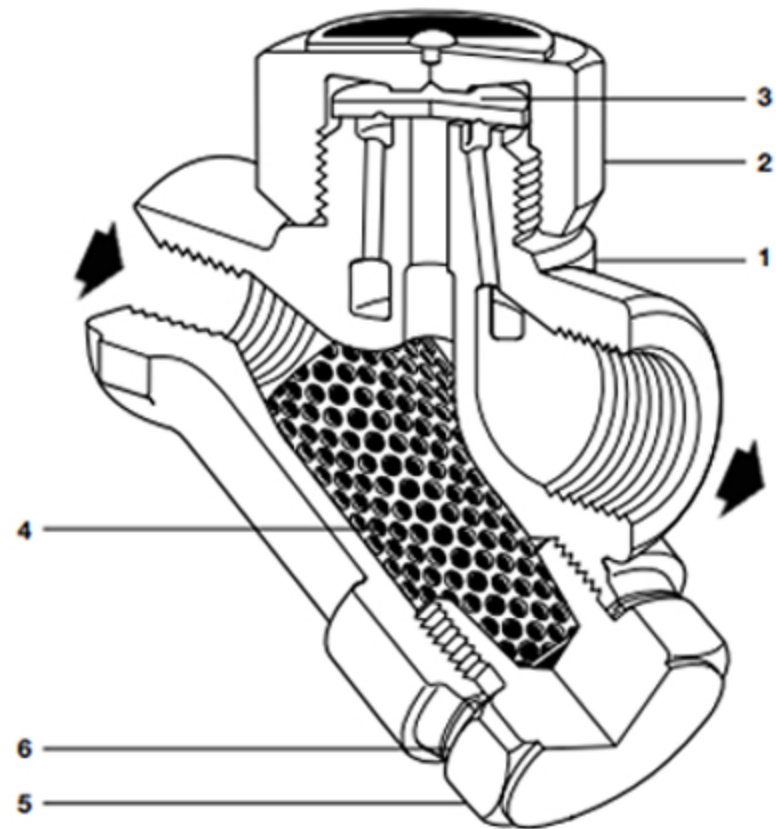
Pressure / temperature limits (ISO 6552)



■ The product **must not** be used in this region.

▨ For optimum product performance the PMO should not exceed 42 bar g.

- A - C TD42L and TD42H
B - C TD42LA and TD42HA



Materials

No. Part	Material
1 Body	Stainless steel (with ENP finish) ASTM A743 Gr. CA 40 F
2 Cap	Stainless steel AISI 416
3 Disc	Stainless steel BS 1449 420 S45
4 Strainer screen	Stainless steel BS 1449 304 S16
5 Strainer cap	Stainless steel AISI 416
6 Strainer cap gasket	Stainless steel BS 1449 304 S16
7 Insulating cover (optional extra)	Aluminium

Materials

No. Part	Material
1 Body	Stainless steel (with ENP finish) ASTM A743 Gr. CA 40 F
2 Cap	Stainless steel AISI 416
3 Disc	Stainless steel BS 1449 420 S45
4 Strainer screen	Stainless steel BS 1449 304 S16
5 Strainer cap	Stainless steel AISI 416
6 Strainer cap gasket	Stainless steel BS 1449 304 S16
7 Insulating cover (optional extra)	Aluminium

Body design conditions	PN63
PMA Maximum allowable pressure	63 bar g @ 100°C
TMA Maximum allowable temperature	400°C @ 42 bar g
Minimum allowable temperature	0°C
PMO Maximum operating pressure	42 bar g
TMO Maximum operating temperature	TD42L and TD42H 400°C @ 42 bar g TD42LA and TD42HA 255°C @ 42 bar g
Minimum operating temperature	0°C
Minimum inlet pressure for satisfactory operation	TD42L and TD42H 0.25 bar g TD42LA and TD42HA 0.80 bar g
PMOB Maximum operating backpressure should not exceed 80% of the upstream pressure	
Designed for a maximum cold hydraulic test pressure of 95 bar g	