



MUD 2020 Defender (L663) Rear Door Table Fitting Instructions



This product can be easily installed with any basic tool kit. There is no need to remove the door-trim from the back door to install the table.



If you wish to fit a light to illuminate your table when in use then you WILL need to remove the door-trim from the door to install any wiring BEFORE fitting the table. We recommend using a spare/empty terminal within the vehicle fusebox to power your light.

The L663 door-trim is secured to the door by the 11 visible Torx screw fixings and traditional trim clips on the back of the door-trim.

Remove the 11 Torx fixings using the T30 key supplied.



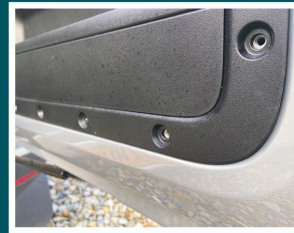
There is an additional hidden fixing within the recessed door-pull. Remove the rubber infill pad from the bottom of the door-pull recess to reveal the hidden screw fixing.

With this fixing removed, pull upwards on the door-pull recess to release it from the door-trim.



Use a trim-tool or pull firmly around the edge of the door-trim to release the trim clips from the door.

If you're not fitting a light to your door-trim, then there's no need to remove the door-trim. You're ready to go right ahead and install the table as per the steps below.



Remove the 11 visible Torx fixings on the rear door-trim using the T30 key supplied. You will not re-use these fasteners for the table install so store them away securely should you wish to remove the table in the future.

Note! During development of this product, we discovered that when removing the rear door-trim fasteners on different L663 Defenders, it was common to find these fasteners would be cross-threaded. We put this down to the fasteners being installed with power-tools on the Land Rover Defender production line. If any of the fasteners are tight to remove/re-install on your vehicle then we recommend cleaning up the captive nut thread by running an M6 tap down the nut.

Preparing the table for install.



1. Fit the four plastic corner trims to the backplate. Note that there are specific left-hand & right-hand trims for each corner. Refer to the pics for their correct orientation.



2. The upper corner trims are fixed using 2 x T10 x 8mm and 1 x T10x12mm fasteners and the M3 nyloc nuts. This is the fiddly part of the table install. Use the T10 screwdriver bit supplied on the fastener heads. If you don't have a spanner to hold the M3 nuts then a pair of needle nose pliers/grips can be used as an effective substitute.

3. The lower corner finisher caps are fixed using the small self-tapping screws. There are three screw fasteners per side including the one on the back side of the backplate.



4. Use 4 x M6x16 fasteners and 4 x washers to install the 4 x Rubber Buffers to the backplate in the locations marked in the positions marked in the picture. Use a washer under the base of each rubber buffer. Tighten the buffer fastener with the T30 key while gripping the buffer between your fingers.

5. Insert the indexing spring loaded plunger through the hole in the centre/top of the backplate. This is secured with the slimline M8 nut.



6. Pulling up on the plunger will reveal a 10mm hexagon that can be held in place with a spanner/wrench whilst the 13mm securing nut is tightened with a spanner/socket. The thread on the plunger body is aluminum. DO NOT over tighten the nut or YOU WILL strip the plunger thread.

7. Before fixing the table backplate to the rear door trim, identify the black plastic spacers within the fitting kit. You will notice there are three different lengths of spacers.

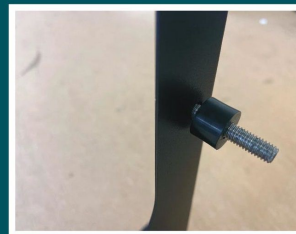


8. The longest sized spacer blocks (15mm) go across the five bottom fastener locations marked in RED.

9. The medium sized spacer blocks (10mm) fit in six locations marked in YELLOW .

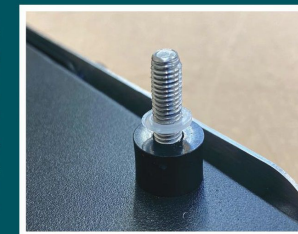


The two small (6mm thick) spacers are used within the table hinge mechanism and are not required at this stage.



10. The spacer blocks go on the back side of the backplate and will sit within the door-trim fastener recesses. The 11 x M6x30 Torx fasteners supplied are used to fasten the backplate to the door-trim. Pass the fasteners through the backplate, fitting the correct length spacer blocks to their respective locations as you work around the backplate.

11. Screw a clear plastic anti-loss washer down each of the fastener threads to prevent the spacer from falling off the fastener during install. Leaving a short length of exposed thread between the anti-loss washer and the spacer will allow some free movement of the fastener. This free-play will help align the fasteners with their respective recessed threads when you offer the panel up to the door-trim.



12. When you have all 11 fasteners and spacer blocks located and secured with anti-loss washers you're ready to attach the backplate to the door-trim.



13. We recommend attaching the backplate to the door-trim using the top pair of fasteners first. Don't tighten down any of the fasteners yet. Work your way around the panel fixings checking the spacers sit within the recessed holes as you go and the backplate sits snugly over the edge of the pocket recess in the door-trim.



Once all of the fasteners have started in their threads and the spacers sit snug within their recess, tighten all 11 of the fasteners down. With the backplate installed on the door-trim you're now ready to install the fold-down table to the backplate.

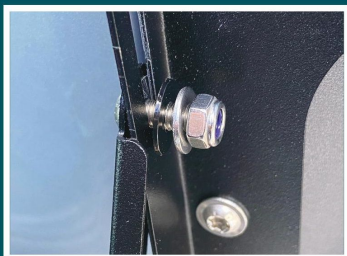


14. Peel off the protective film from the drop-down table panel.

15 Fit the table support tabs into the LH & RH channels in the backplate using the M6x16 Torx fasteners. Note the way the support tab fits to the backplate and the direction that the bolts should be installed.



16. Use a pair of the thin plastic washers between the table support tabs and the slots in the backplate to prevent metal-to-metal contact as the support tab slides in the channel. Tighten the nyloc nuts on the support tabs just enough that the tabs can still slide freely within the channel on the backplate.



17. Each hinge is made up of 1 x M6x16 Torx fastener, 1 x 6mm spacer block, 1 x Nyloc nut & 1 x M6 washer. The hinge mechanism should be assembled as per the pic. Tighten the nyloc nut just enough so that the table can still rotate freely on its hinge.

18. Attach the lower support tabs to the table using the M6x12 Torx fasteners. Once again, use the plastic washer between table and the support tab to prevent metal-to-metal contact. Tighten the nyloc nuts on the support tabs just enough to allow free movement of the support tab.



19. Push the 6 x nut-caps onto the nuts on the hinge pivots and support tabs.

20. Slide the board into the C-section channel with the 'mudstuff.co.uk' at the bottom right corner. The notch in the centre of the slide-out extension should align with the plunger.



The MUD 2020 Defender (L663) Rear Door Table is a Registered Design. #6152091

Tel: +44 (0) 1422 881951
Email: mud@mudstuff.co.uk
Web: www.mudstuff.co.uk

