



ABBA True Shapes

Ready-to-Wear Natural Beach Waves How-To



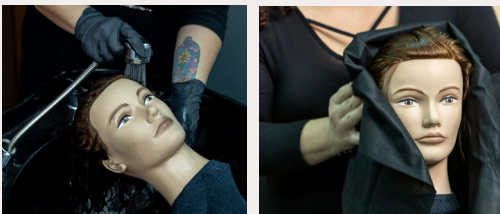
SCAN FOR
PROTOCOL VIDEO.



CLIENT CONSULTATION

1. Assess hair for texture, porosity, condition, chemical processing history, and client's lifestyle and hair routine.
2. Discuss expectations with client. Determine the desired style and texture results.

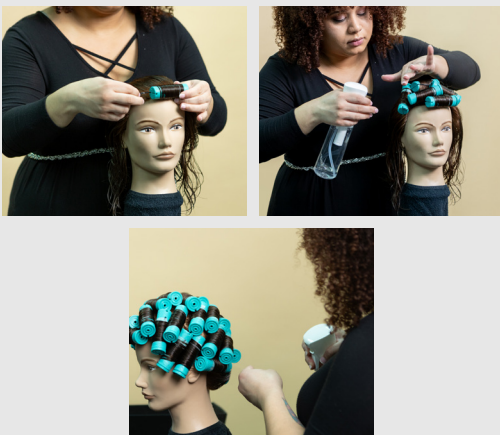
PRO-TIP: To determine correct processing time, rod and wrap choice, curl pattern, and overall hair integrity, perform a preliminary strand test prior to starting the perm service. Based on results, determine if or how the perm should be performed.



PREPARATION

STEP 1: Gently cleanse and rinse hair thoroughly. Do not apply conditioner.

STEP 2: Towel dry.



WRAPPING

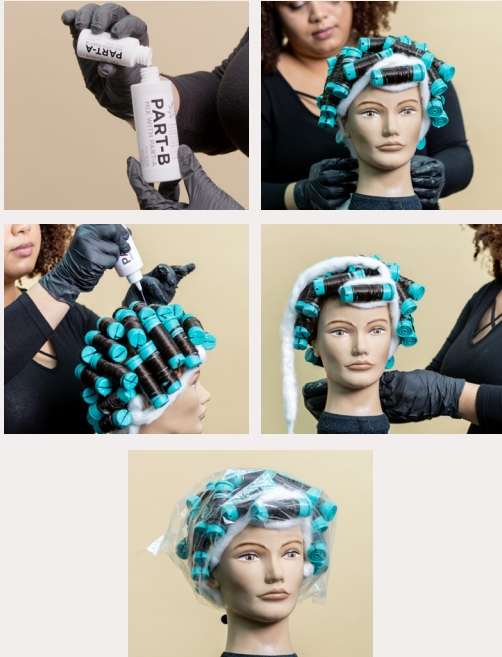
STEP 1: Wrap towel-dried hair smoothly with even tension.

STEP 2: If hair dries during wrapping, lightly mist with water:

DO NOT wrap with the wave lotion.

STEP 3: After wrapping is completed, lightly mist entire head with water prior to wave lotion application.

PRO-TIP: Select rod size based on desired curl pattern. Consider direction, volume, length, and density when wrapping. These will have an impact on final perm results. For best results when wrapping, section size should not exceed the width of the chosen rod size. Make sure not to overwrap the hair on the rods. This will effect the strength of the final curl pattern.



APPLICATION:

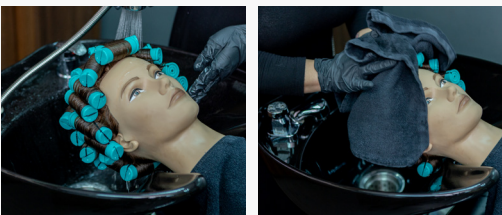
- STEP 1:** To create Wave Lotion, mix Part A with Part B and shake gently for 15 seconds.
- STEP 2:** Apply cotton around hairline.
- STEP 3:** Gloves should be worn. Apply Wave Lotion (Parts A & B) to the top and bottom of each rod, saturating evenly and thoroughly.
- STEP 4:** After applying Wave Lotion, re-apply fresh cotton around hairline.
- STEP 5:** Cover hair with plastic cap and process accordingly.

PROCESSING TIME:

All processing times are approximate. Processing is complete when hair has a firm "S" pattern and curled ends. Factors such as hair type and varying porosities may affect actual processing time. A test curl during processing is recommended to ensure predictable results.

	Regular Results Process at Room Temperature	Extra Body Results Process Under Pre-Heated Dryer
Normal/Resistant Hair	25 min	12-15 min
Color Treated Hair	15 min	5-10 min
Highlighted Hair	10-20 min	Do not use dryer

**not recommended for highlift tinted hair or more than 40% highlighted hair.



RINSING

- STEP 1:** Upon completion of processing, rinse hair thoroughly with warm water for 5 minutes.
- STEP 2:** Towel blot each rod. Thorough rinsing and blotting helps reduce perm odor.
- OPTIONAL STEP :** Let hair oxidate for 5 - 15 minutes. Recommended for long hair.



NEUTRALIZING

- STEP 1:** Shake Neutralizer well and thoroughly saturate each rod. Save 1/2 oz. of Neutralizer for later use.
- STEP 2:** Wait 5 minutes, then gently remove rods from the hair.
- STEP 3:** Gently work remaining Neutralizer through hair for one minute.
- STEP 4:** Rinse hair thoroughly for 5 minutes with warm water.

POST PERM INSTRUCTIONS

ABBA True Shapes Acid Wave offers same-day styling and requires no downtime for coloring & shampooing.



FINISHED LOOK