



Free Knitting Pattern

Butterfly Pillow



Pattern #-

M22084 TATQ

Yarn-

Lion Brand® Touch Of Alpaca®
Thick & Quick®

In collaboration with-

Teresa Chorzepa

SKILL LEVEL – EASY

SIZES

About 14 x 14 in. (35.5 x 35.5 cm)

MATERIALS

- LION BRAND® TOUCH OF ALPACA® THICK & QUICK® (Art. #686)
 - #101 Quartz 2 balls (A)
 - #110 Nightshade 1 ball (B)
 - #178 Tourmaline 1 ball (C)
- LION BRAND® knitting needles size 15 (10 mm)
- LION BRAND® stitch markers
- LION BRAND® large-eyed blunt needle



ADDITIONAL MATERIALS

Fiberfill stuffing

GAUGE

11 sts = about 5 1/4 in. (13.5 cm); 9 rows = about 3 1/2 in. (9 cm) over St st (k on RS, p on WS).

BE SURE TO CHECK YOUR GAUGE.

NOTES

1. Pillow is worked in one piece.
2. The butterfly motif is worked on one side of Pillow. The other side of Pillow is striped.
3. Butterfly is worked in intarsia, following a chart. Read RS rows of Chart from right to left and WS rows from left to right.
4. When working intarsia, use a separate ball of yarn for each section of color. Do not carry yarn across WS of work between color changes. Twist yarns on WS to prevent holes.
5. Wind yarns B and C into smaller, separate balls before beginning.

For thousands of free patterns, visit our website www.LionBrand.com

To order visit our website www.lionbrand.com or call: (800) 258-YARN (9276) any time!

Copyright ©1998-2022 Lion Brand Yarn Company, all rights reserved. No pattern or other material may be reproduced -- mechanically, electronically, or by any other means, including photocopying - without written permission of Lion Brand Yarn Company.

PILLOW

With A, cast on 29 sts.

Beginning with a RS (knit) row, work in St st (k on RS, p on WS) for 14 rows.

Charted Butterfly Pattern

Row 1 (RS): K9, place marker (pm), knit next 11 sts AND change yarn color following Row 1 of Butterfly Chart, pm, k9.

Row 2 (WS): P to first marker, slip marker (sm), purl to next marker AND change yarn color following next row of Butterfly Chart, sm, p to end of row.

Row 3 (RS): K to first marker, sm, knit to next marker AND change yarn color following next row of Butterfly Chart, sm, k to end of row.

Repeat Rows 2 and 3, working in St st AND changing yarn color following Butterfly Chart between markers, until all 8 rows of Chart have been completed.

Cut B.

Remove markers.

With A, work in St st for 14 rows.

Stripe Section

Note

When working Stripe Section, cut yarn between color changes.

With B, work in St st for 8 rows.

With C, work in St st for 8 rows.

With A, work in St st for 4 rows.

With C, work in St st for 8 rows.

With B, work in St st for 8 rows.

Bind off, leaving a long yarn tail for sewing.

FINISHING

Fold piece in half.

With attached yarn tail, sew 2 sides together.

Stuff pillow, then sew remaining side closed.

Weave in ends.

ABBREVIATIONS

k = knit

p = purl

RS = right side

st(s) = stitch(es)

St st = Stockinette stitch

WS = wrong side



Every effort has been made to produce accurate and complete instructions. We cannot be responsible for variance of individual knitters or crocheters, human error, or typographical mistakes.

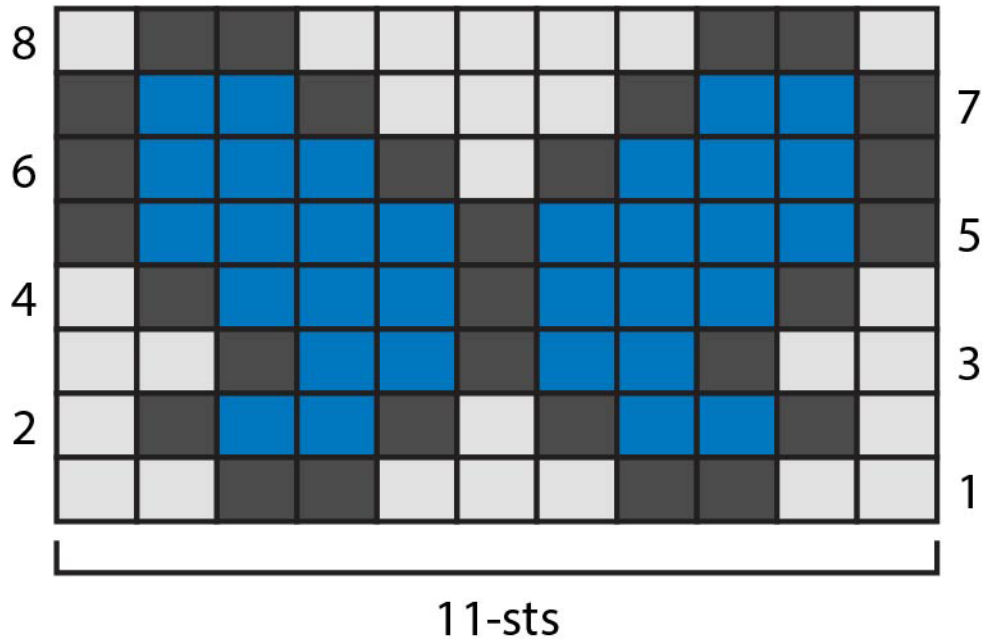
©2022 Lion Brand Yarn Company, all rights reserved.

For thousands of free patterns, visit our website www.LionBrand.com




To order visit our website www.lionbrand.com or call: (800) 258-YARN (9276) any time!

Copyright ©1998-2022 Lion Brand Yarn Company, all rights reserved. No pattern or other material may be reproduced -- mechanically, electronically, or by any other means, including photocopying - without written permission of Lion Brand Yarn Company.

Butterfly Chart



COLOR KEY

-  Color A
-  Color B
-  Color C