



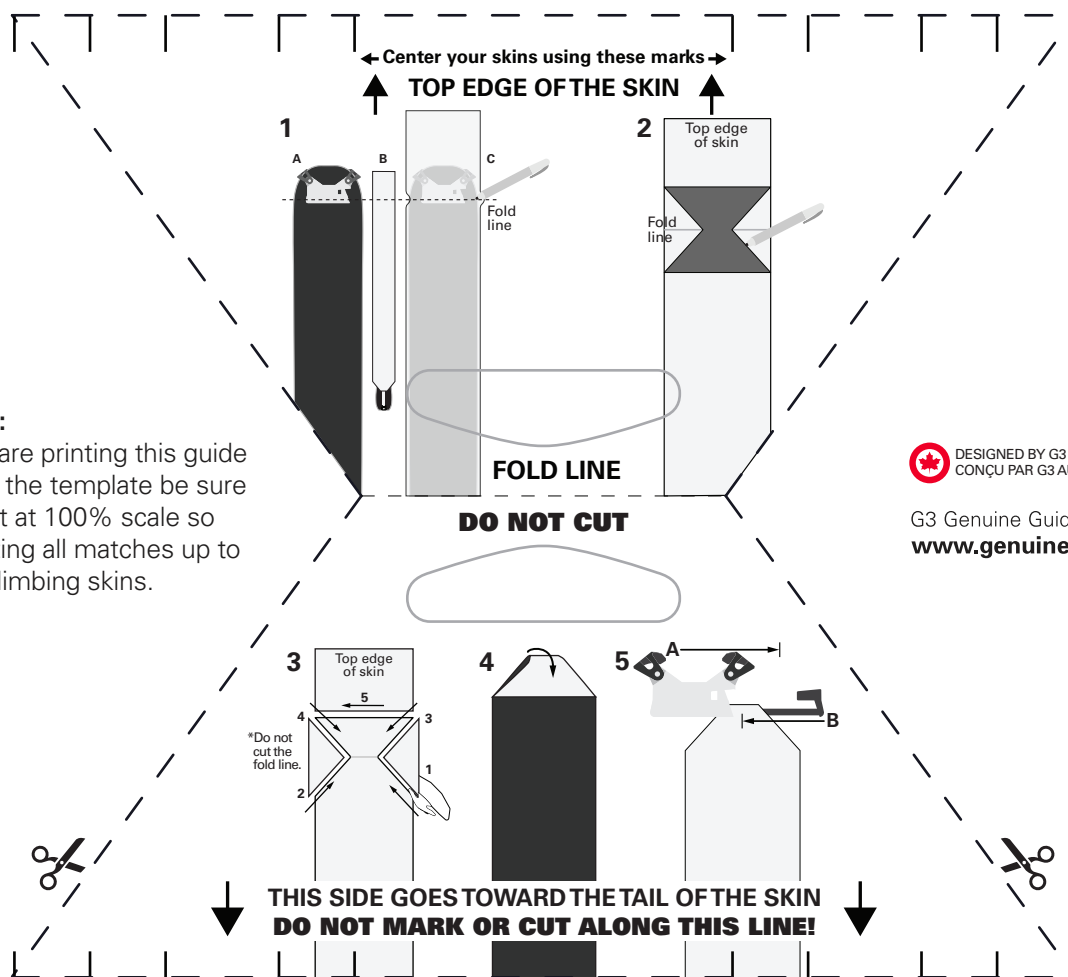
ESCAPIST CLIMBING SKIN TIP KIT

INSTALLATION INSTRUCTIONS:

1. Determine skin length. (A) Position the ESCAPIST tip. (B) With the tail strap on extend the skin plush along the length of the ski. (C) Mark the "fold line" on the skin where it overlays the tip assembly bulge.
2. Trace and mark trim shape. Align the center of the skin tip template (see below) with the fold line and trace with a marker on the skin plush.
3. Trim skin tip shape according to the drawing on the back of this card.
4. Fold the skin at the fold line and attach glue to glue.
5. Install tip and skewer. (A) Insert folded skin into ESCAPIST tip about 3/4 of the way, then insert skewer into the skin about 1/2 way. (B) Complete insertion until skewer clicks into place.
6. Confirm sizing

NOTE:

If you are printing this guide to use the template be sure to print at 100% scale so the sizing all matches up to your climbing skins.



DESIGNED BY G3 IN CANADA
CONÇU PAR G3 AU CANADA

G3 Genuine Guide Gear Inc.
www.genuineguidegear.com