

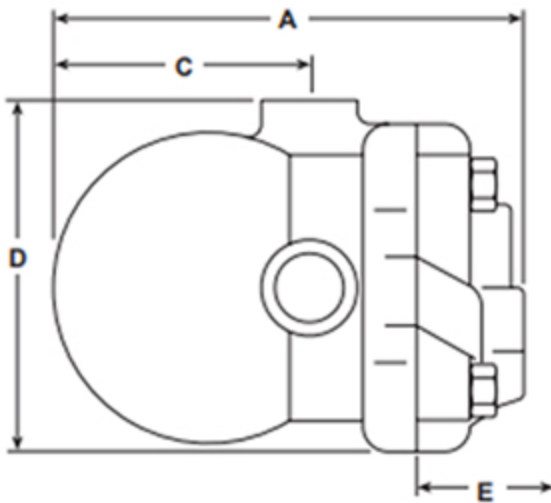
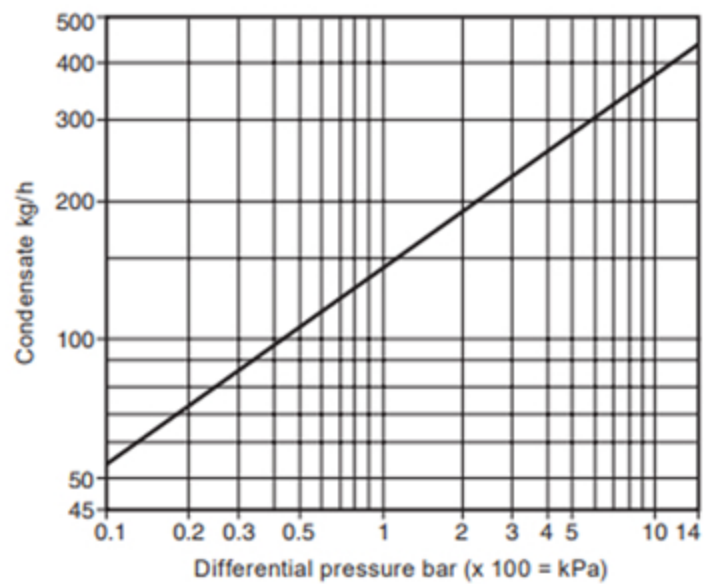
Spirax Sarco 1/2" SG Iron BSP Compressed Air Trap Valve CA14



Features:

- SG Iron Body
- 16 Bar pressure rating
- Air and gas trap ball float
- Pressure Equipment Directive Compliant

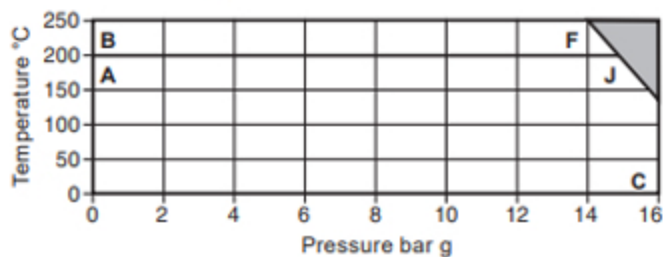
Capacities



Material

| No. | Part | Material |
|-----|----------------------------|--|
| 1 | Body | SG iron EN-GJS-400-15 |
| 2 | Cover bolt | Steel BS 3692 Gr. 8.8 |
| 3 | Cover gasket | Reinforced exfoliated graphite |
| 4 | Cover | SG iron EN-GJS-400-15 |
| 5 | Main valve cone | CA14 Synthetic rubber Viton CA14S Stainless steel AISI 440B |
| 6 | Main valve seat | Stainless steel BS 970 431 S29 |
| 7 | Main valve seat gasket | Stainless steel BS 1449 304 S11 |
| 8 | Main valve assembly screws | Stainless steel BS 6105 CI A270 |
| 9 | Ball float and lever | Stainless steel BS 1449 304 S16 |
| 10 | Pivot frame | Stainless steel BS 1449 304 S16 |
| 11 | Pivot pin | Stainless steel |

Pressure/temperature limits



The product **must not** be used in this region.

A-J-C CA14 screwed BSP or NPT.

B-F-C CA14S screwed BSP or NPT.

| Body design conditions | | PN16 |
|--|---|--|
| PMA | Maximum allowable pressure | 16 bar g @ 120 °C |
| TMA | Maximum allowable temperature | 250 °C |
| Minimum allowable temperature | | 0 °C |
| PMO | Maximum operating pressure | 16 bar g |
| TMO | Maximum operating temperature: | CA14 200 °C @ 14.7 bar g |
| | | CA14S 250 °C @ 13.9 bar g |
| Minimum operating temperature | | 0 °C |
| ΔPMX | Maximum differential pressure bar, depending on the specific gravity of the liquid being drained: | |
| | Specific gravity | 1.0 0.9 0.8 0.7 Min. 0.6 |
| | ΔPMX bar | 14.0 14.0 14.0 9.0 5.0 |
| ΔPMN | Minimum differential pressure | 0.1 bar |
| Designed for a maximum cold hydraulic test pressure of | | 24 bar g |

