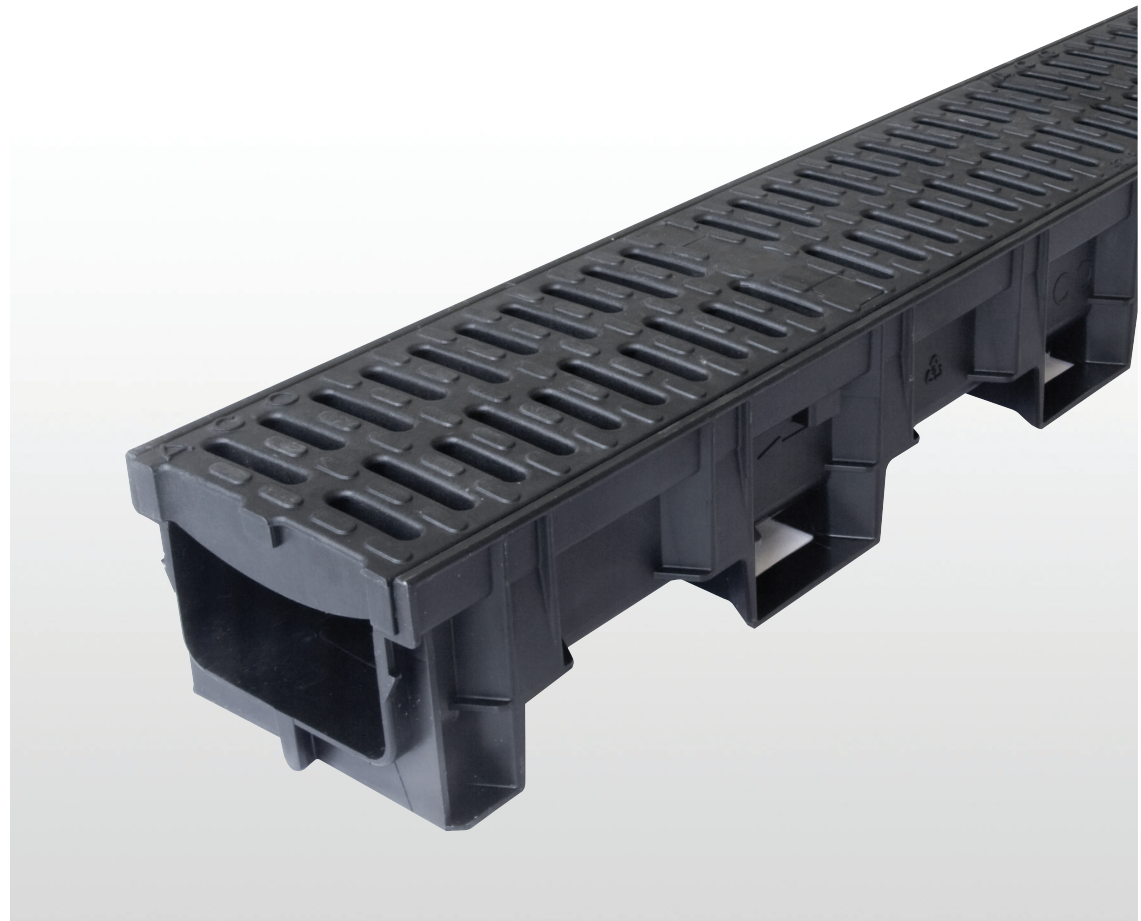


ACO Water Management: Building + Landscape

Uniclass L7315	EPIC J3413
CI/SfB (52.5)	

ACO HexDrain® B 125

- ✓ Ideal for light duty applications
- ✓ Easy and quick to install
- ✓ Heelguard™ grating, suitable for pedestrian traffic
- ✓ Full range of accessories for professional installation
- ✓ CE marked and fully certified to Load Class B 125 BS EN 1433:2002



ACO HexDrain® B 125

The ideal drainage channel for light duty applications

Manufactured from recycled polypropylene, ACO HexDrain® B 125 is suitable for vehicle traffic up to Load Class B 125.

ACO HexDrain® B 125 comes complete with a corrosion resistant black composite Heelguard™ grating, ideal for pedestrian traffic.

The ACO Drainlock™ grating has a bar-less locking device, allowing for quick and simple installation of gratings.

A full range of accessories are available, designed to aid simple and fast installation.

Applications

- ▶ Driveways
- ▶ Small private car parks



ACO HexDrain® B 125

System Overview



Driveways and small private car parks

Features



Environmentally friendly product – manufactured from recycled polypropylene and 100% recyclable

Anti-shunt prevents grating movement when installed

CE marked and fully certified to Load Class B 125 BS EN 1433:2002

Heelguard™ grating with 8mm slots

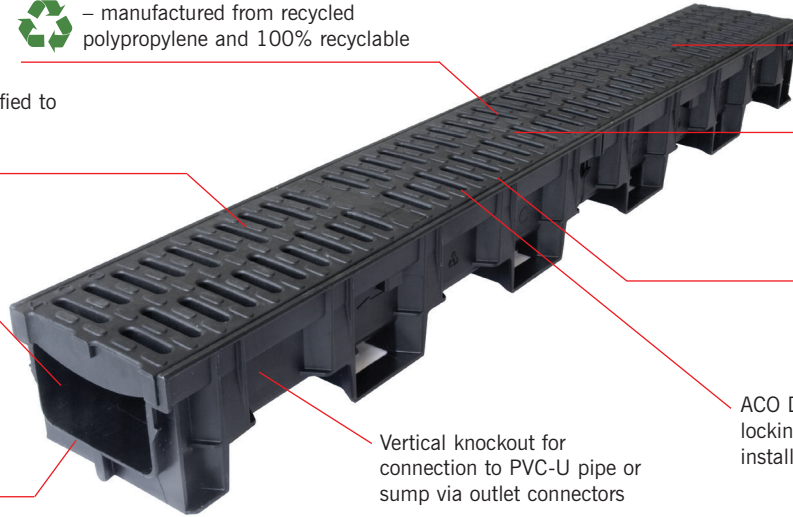
100mm overall channel depth

Cutting guide to create half metre channels

Male and female channel connections clip together for quick and easy installation

Vertical knockout for connection to PVC-U pipe or sump via outlet connectors

ACO Drainlock™ grating – this bar-less locking device allows quick and simple installation of gratings



ACO HEXDRAIN® B 125 ACCESSORIES

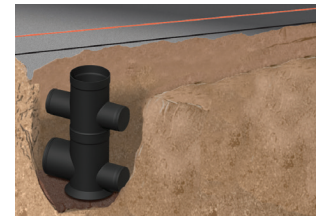


Closing end cap Ø110mm Vertical outlet connector Ø110mm Roddable foul air-trap Sump unit with silt bucket

ACO HEXDRAIN® B 125 INSTALLATION



Dig trench, allowing for width of channel plus 100mm each side for concrete haunch. Trench depth should allow for channel depth plus 100mm for concrete bedding. Also allow for 100mm concrete around and beneath sump unit. Mark finishing height with fixed line 3mm below final surface. Lay 100mm (min) bed of concrete.



Knock out pre-formed outlet from the inside (marked with hammer symbol) and trim edges with a sharp knife. Fit outlet connector and sump. Position sump and outlet channel on concrete bed, fit PVC-U union/trap to drainage pipework.

ACO HexDrain® B 125 channel assembly

Product code	Description	Length (mm)	Width (mm)	Depth (mm)	Invert (mm)	Weight (kg)
11019	Channel with 2 composite Heelguard™ gratings	1000	138	100	75	2.9

ACO HexDrain® B 125 accessories

Product code	Description	Length (mm)	Width (mm)	Depth (mm)	Invert (mm)	Weight (kg)
11085	Closing end cap	11	138	105	-	0.10
11285	Ø110mm Vertical outlet connector	-	Ø110	60	-	0.10
11191	Ø110mm Roddable foul air-trap	240	Ø110	400	-	1.20
11385	Black plastic sump assembly c/w silt bucket*	-	Ø160	510	-	3.00

* Sump assembly consists of a Ø160mm vertical outlet connector, silt bucket and sump body.



Lay channels starting from outlet/sump, ensuring joints connect by lowering units horizontally. Fit endcaps to end channels. For fully watertight joints, use a suitable sealant (contact ACO for further advice).



With gratings fitted, haunch around channels/sumps with concrete. Final surface to be 3mm above grating. Bricks/paviours should be laid in mortar for lateral stability.

ACO Technologies plc

ACO Business Park, Hitchin Road, Shefford, Bedfordshire SG17 5TE
Tel: 01462 816666 Fax: 01462 815895
e-mail: technologies@aco.co.uk website: www.aco.co.uk

