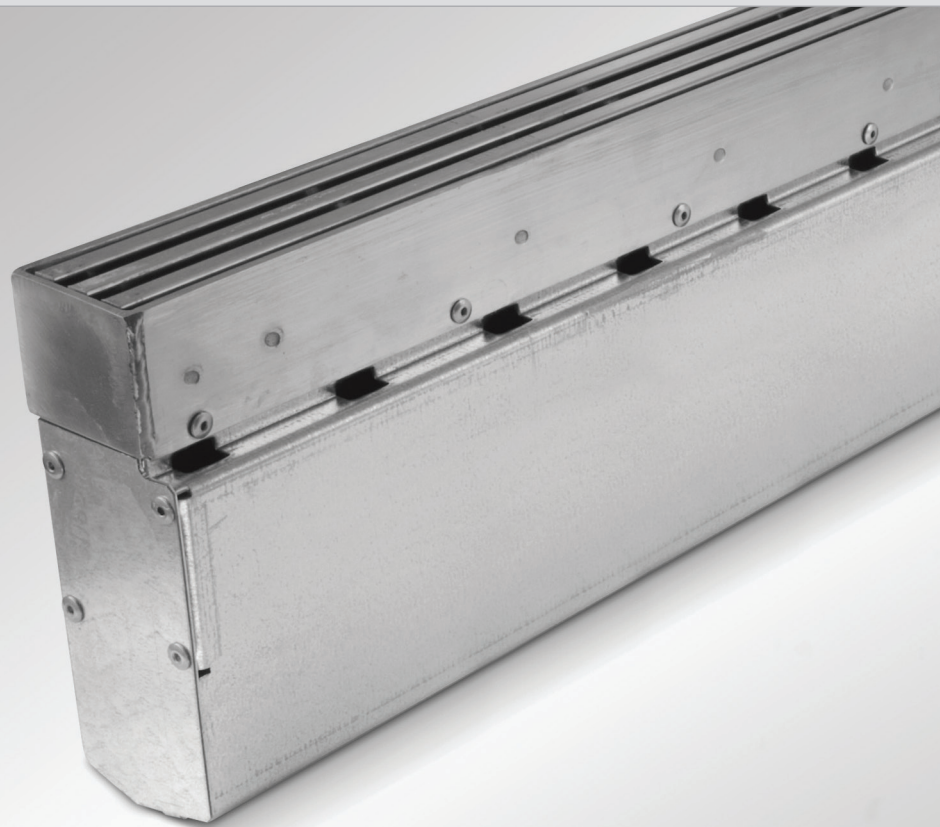


Uniclass L7315	EPIC J3413
CI/SfB (52.5)	

# ACO Water Management: Building + Landscape

## ACO StepDrain

- ✓ Provides level threshold drainage to eliminate the risk of water ponding at house entrances
- ✓ Easy and quick to install
- ✓ Robust galvanised and stainless steel constructions
- ✓ Available in 940mm and 1088mm lengths
- ✓ Compliant with Part M (England and Wales) and Section 4 (Scotland) Building Regulations



## *ACO StepDrain*

### **Slimline domestic level threshold door drainage**

Manufactured from galvanised steel, ACO StepDrain eliminates water ponding at house entrances.

ACO StepDrain comes complete with a corrosion resistant 304 stainless steel Heelguard™ grating, suitable for pedestrian traffic.

The system is available in two sizes (940mm and 1088mm) making it ideal for almost any door size.

The system is compliant with Part M of the Building Regulations for England and Wales and Section 4 of the Scottish Building Standards.

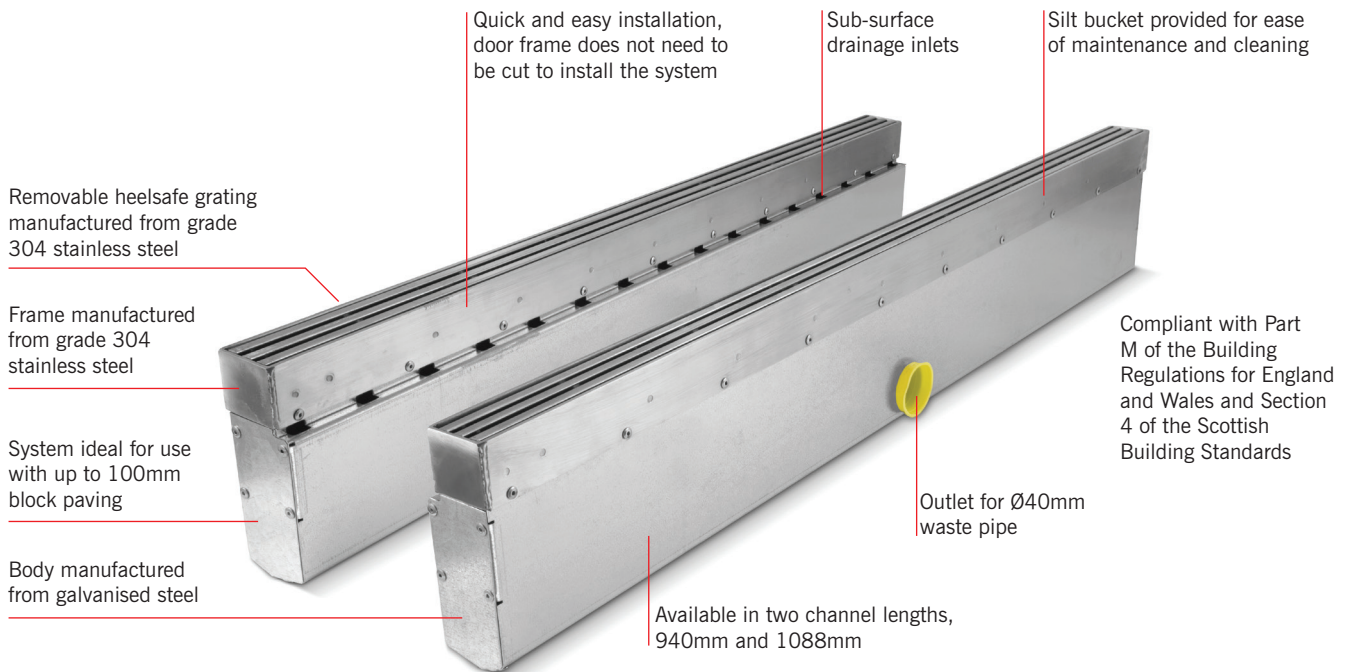
#### **Typical applications**

- ▶ Threshold Drainage





## Features



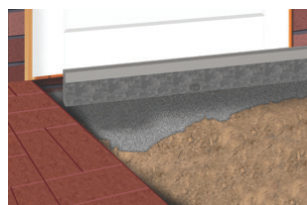
## ACO StepDrain channel assemblies

Product code	Description	Length (mm)	Width overall (mm)	Depth overall (mm)	Invert depth (mm)	Weight (kg)
96809	ACO StepDrain channel assembly	940	53	159	150	9.0
96848	ACO StepDrain channel assembly	1088	53	159	150	10.4

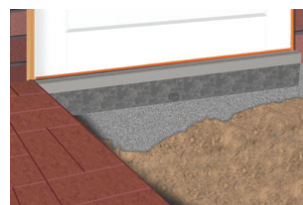
## ACO STEPDRAIN INSTALLATION



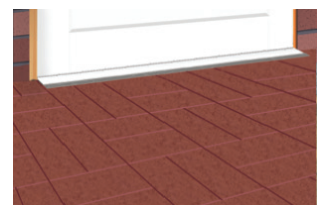
Dig trench 100mm wide by 210mm deep for channel. Remove cap from outlet.



Lay 50mm (min.) bed of concrete or mortar. Position the channel and fit to U-PVC Ø40mm pipework.



Haunch around channel with concrete or suitable fill material.



Protective film on gratings should now be removed. Complete the installation by sealing between the door sill and grating.

### ACO Technologies plc

ACO Business Park, Hitchin Road, Shefford, Bedfordshire SG17 5TE

Tel: 01462 816666 Fax: 01462 815895

e-mail: [technologies@aco.co.uk](mailto:technologies@aco.co.uk) website: [www.aco.co.uk](http://www.aco.co.uk)