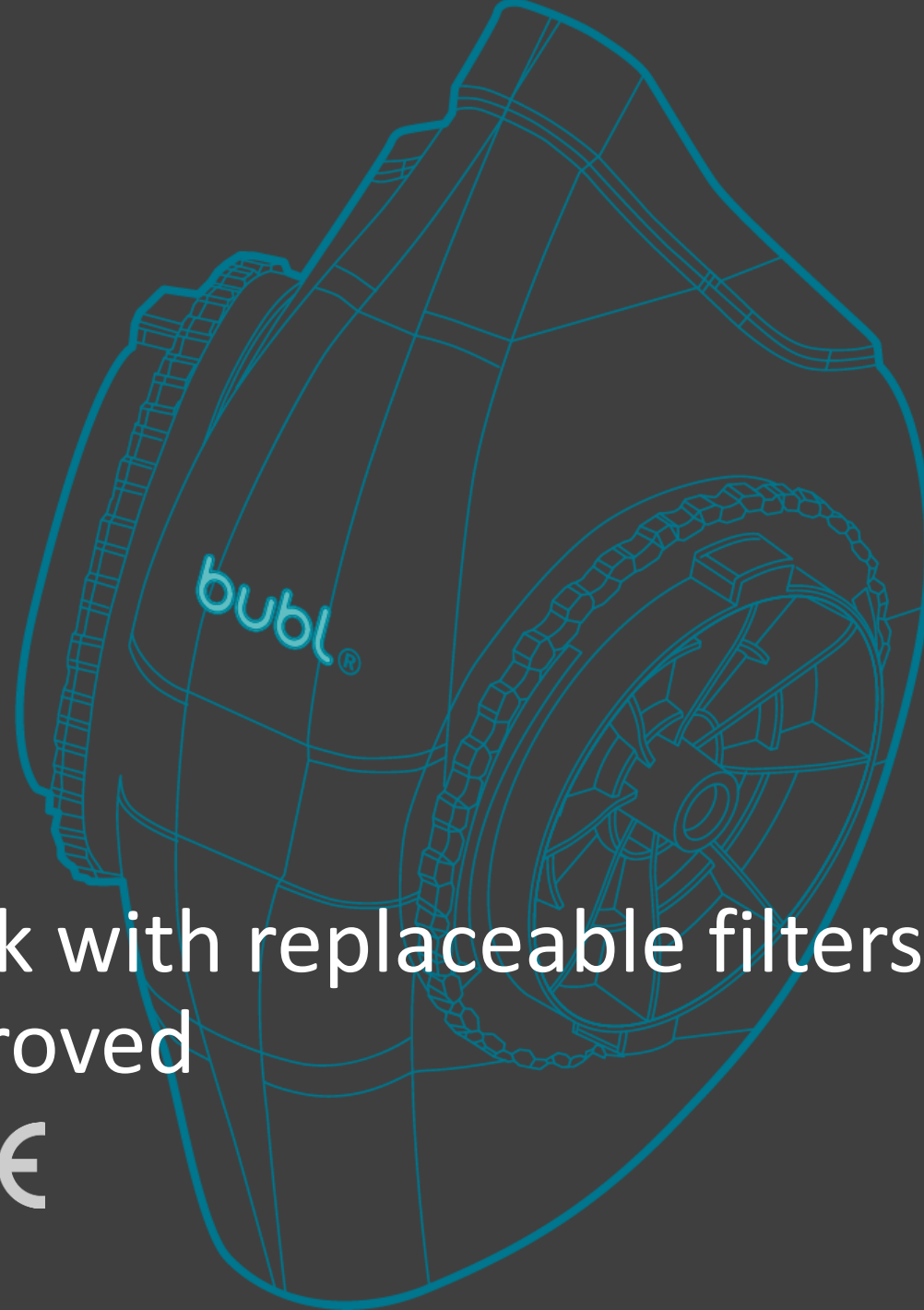


bubl



A supple, see-through mask with replaceable filters
CE Approved

CE

bubl



Ergonomically Designed

bubl is made from a flexible polymer that fits snugly around the bridge of the nose, cheeks and chin. The shape of the mask is naturally ergonomic based on how people instinctively cup their hands to protect their nose and mouth.

100% Reusable

Easily cleaned. The main body of the mask can be sterilised with spray or steam.

EZ Adjustable Fit

Elastic straps are adjustable for fit and comfort with head strap adaptor to protect ears.

Transparent Visibility

The bubl masks are transparent, allowing for natural, empathetic communication by reducing barriers that are caused by traditional masks. You can see facial expressions, emotions, catch visual cues and even lipread.

Changeable Filters

The double filters can be changed daily. They simply twist and pop out. Each pair of filters offer **8 hours of use**

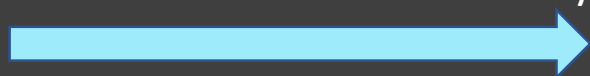


bubl



A supple, see-through mask with replaceable filters

Why choose this over other masks currently on the market

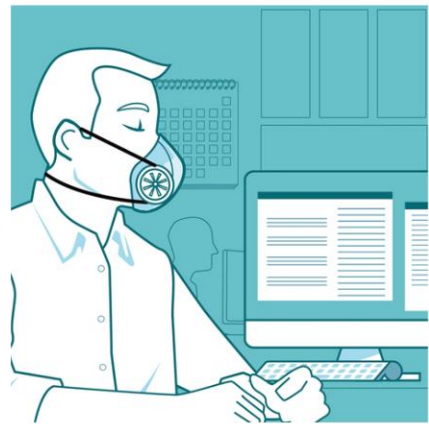


bubl is supplied with 60 filters (1 month supply / 240 hours)

Separate filters available



	Paper Mask	Material Mask	Bubl	Replacement Filters
Transparent Communication			✓	
Reusable	Single use	✓	✓	
Easily Sanitised			✓	
CE Marked	✓		✓	
Protects Others	✓	✓	✓	
Protects Nose and Mouth	✓	✓	✓	
Easy to Clean and Sanitise			✓	
Changeable Filters			✓	
Comfortable without hurting ears			✓	
Adjustable Straps			✓	
Easy to Breathe			✓	
Ergonomically Designed			✓	
Cost Per Day	60p a day (Avg)		1 st Month 66p a day	25p a day



bubbl