

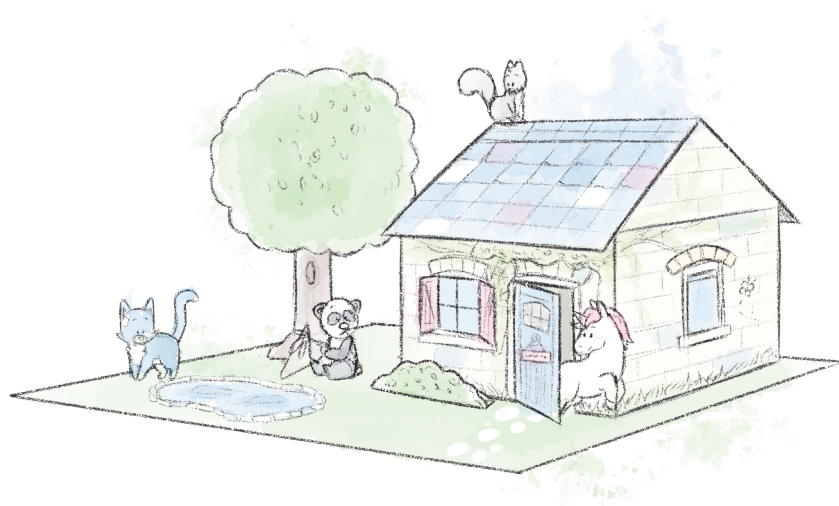


CRAFT HOUSE

My BLUE NOSE FRIENDS love to get together to SHARE FUN TIMES, AND WHERE BETTER TO MEET UP THAN THIS CUTE LITTLE CRAFT COTTAGE? WE'VE PROVIDED THE TEMPLATE FOR THE HOUSE - simply cut out and glue together, THEN invite YOUR FRIENDS ON AN ADVENTURE!

THE template includes patterns for the HOUSE, a garden that includes a pond, and four BLUE NOSE FRIENDS CHARACTERS; **Snooks** the PANDA, **Abra** the UNICORN, **Bolt** the SQUIRREL, and **Spirit** the CAT.

You will NEED scissors, card, glue, AND tack. (AS IN BLUE-tack)



***Note for Parents and Carers:**
This project requires scissors. Please supervise at all times.

SHARE YOUR CREATIONS WITH US! Ask your grown up to send a picture to hello@metoyou.com OR tag us on our socials using #MyBlueNoses at [@OfficialMyBlueNoseFriends](https://www.facebook.com/OfficialMyBlueNoseFriends) [@mybluenosefriends_official](https://www.instagram.com/mybluenosefriends_official)

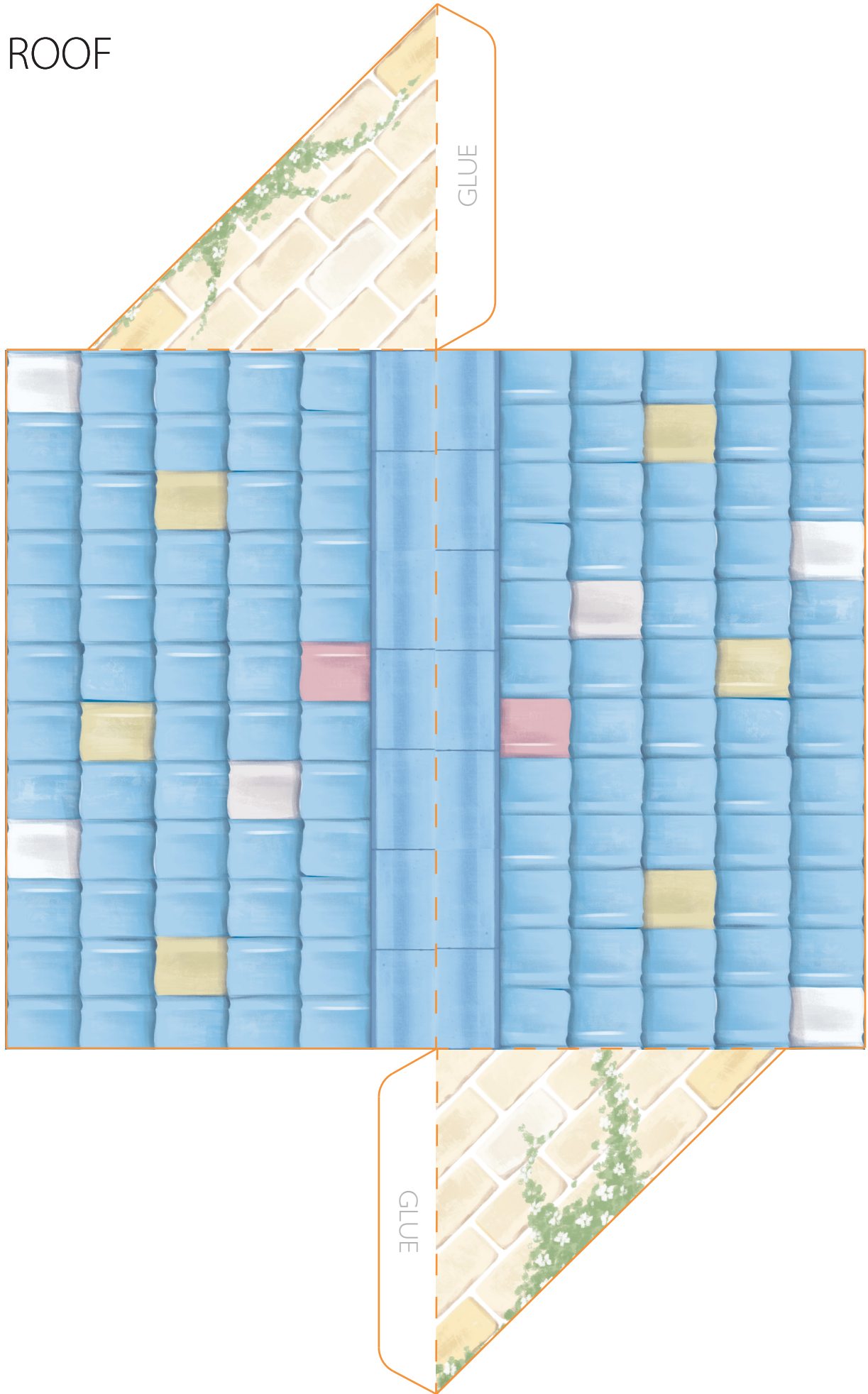


Instructions

1. PRINT OUT THE TEMPLATES AND GLUE THEM ONTO SHEETS OF CARD.
2. GRAB SOME SCISSORS AND CUT OUT THE WALLS OF THE HOUSE ONE BY ONE, FOLDING ALONG THE DASHED LINES. THEN GLUE THE WALLS TOGETHER TO MAKE A BOX SHAPE. NEXT, CAREFULLY CUT INTO THE ORANGE GUIDE LINES PROVIDED. ONCE DONE, FOLD THE DOOR SO THAT IT'LL OPEN AND CLOSE.
3. NEXT, CUT OUT THE ROOF. USE THE TRIANGLES AT EACH SIDE TO HELP FOLD AND GLUE INTO THE SHAPE OF A ROOF. AFTERWARDS, PLACE IT ON TOP OF THE WALLS OF THE HOUSE.
4. NOW THE ACCESSORIES! CUT OUT THE TREE AND IT'S ROOTS, AND SLOT THEM TOGETHER INTO A STAND. WITH THE SHRUB, CUT IT OUT AND FOLD INTO A STAND TOO. GLUING IT AS GUIDED TO KEEP IT SECURE.
5. WE'RE NEARLY THERE! FINALLY, CUT OUT THE CHARACTERS AND HAVE SOME FUN! LET **Spirit**, THE CAT, JUMP ONTO THE ROOF! OR **Bolt**, THE SQUIRREL, TO JUMP INTO THE POND! OR ALLOW **Abra**, THE UNICORN, INVITE **Snooks**, THE PANDA, OVER FOR TEA!

TIP: You could add a touch of glitter to the garden to make it EVEN MORE magical!

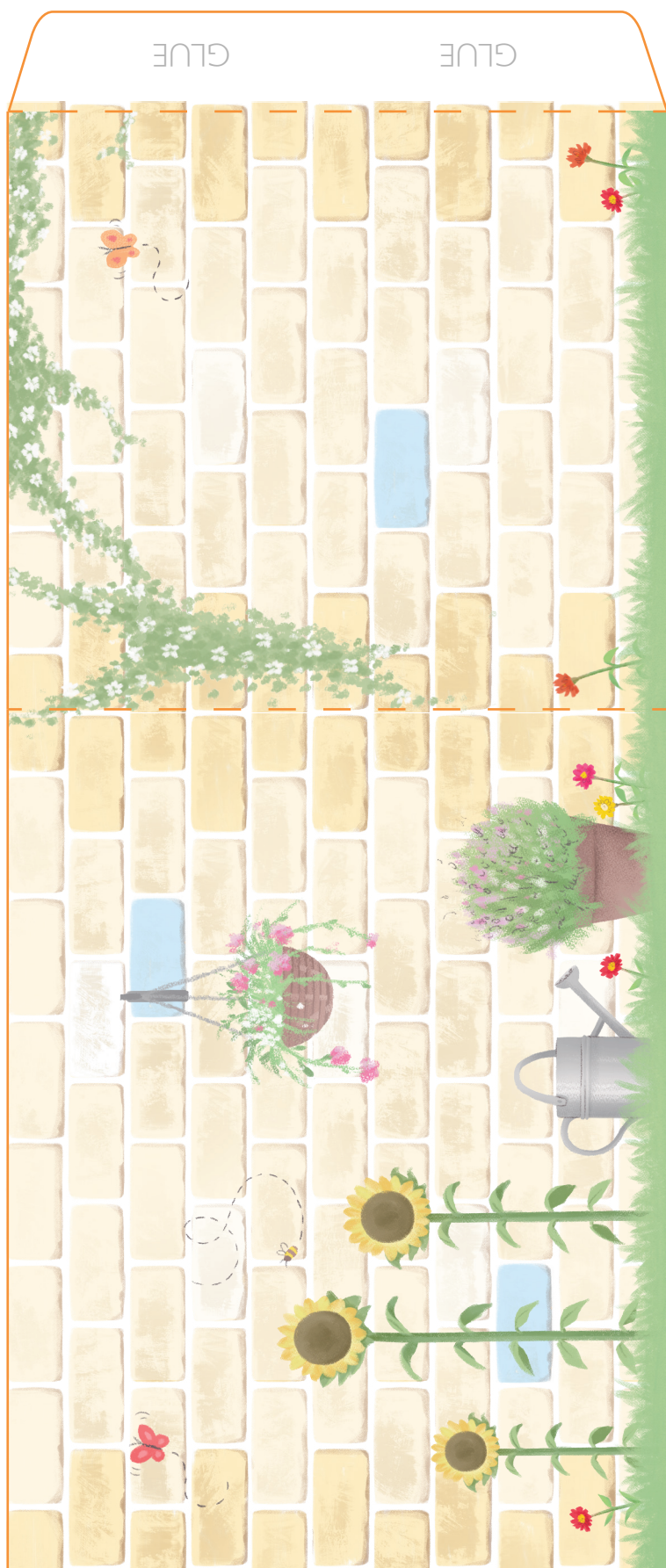
ROOF

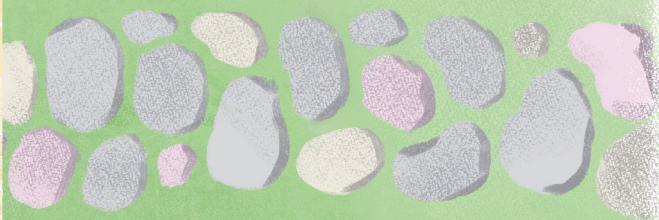
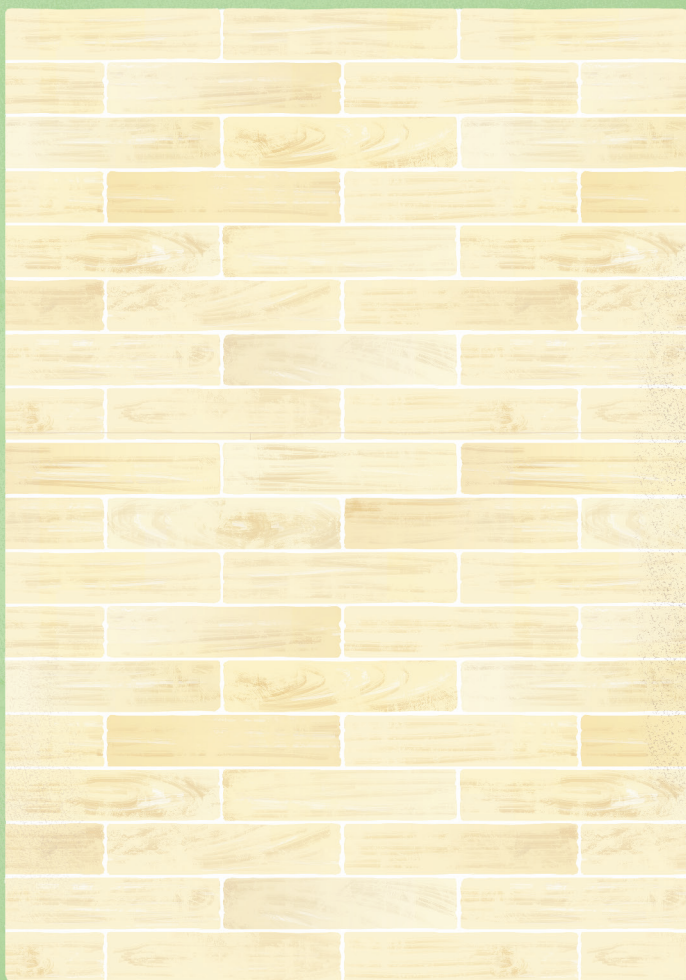


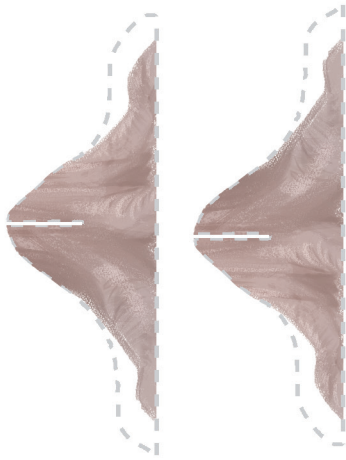
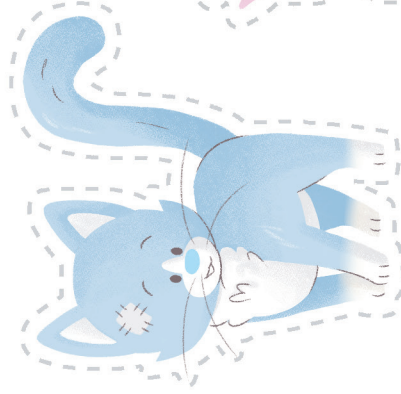
FRONT



BACK







Stick Together

