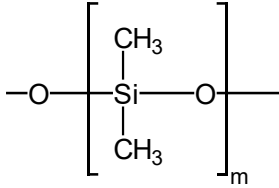


## TRB-SULFUR

**100% Dimethyl polysiloxane, bonded and crosslinked phase.**

- Column specially designed for the analysis of sulphurous compounds (in natural gas, petrol derivatives, wines, beer, etc.)
- Guaranteed thermal stability, with low column bleed



Structure of Poly (dimethyl) siloxane

### TRB-SULFUR Equivalent Phase

**Agilent:** CP-Select CB for Sulfur, CP-Sil 5CB for Sulfur  
**Supelco:** SPB-1 SULFUR

### TRB-SULFUR

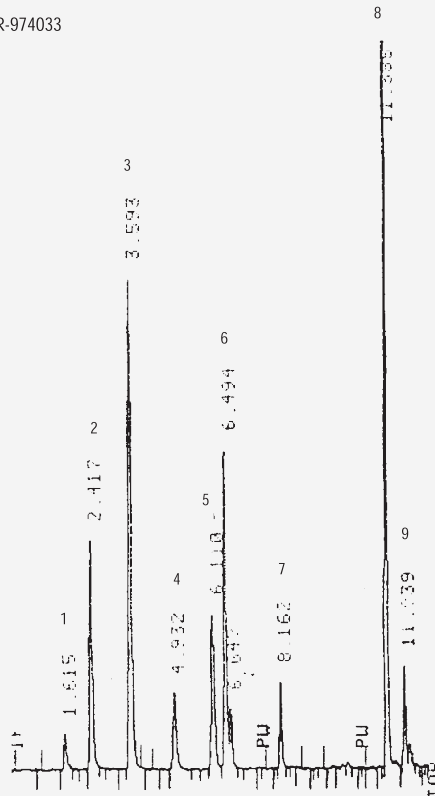
Internal Diam. (mm)	Length (m)	Film Thickness (µm)	Temp limits (°C)	Part. N°. (P/N)
0,32	30	4,00	-60 to 270/290	TR-974033

## TRB-SULFUR: MERCAPTANS

Column: **TRB-SULFUR**, 30 m x 0.32 mm x 4.0 µm, TR-974033

### Peak Name

- 1 SH<sub>2</sub>
- 2 Methyl mercaptan
- 3 Ethyl mercaptan
- 4 2-Propylmercaptan
- 5 Terbutyl mercaptan
- 6 Methyl ethyl sulfide
- 7 1-Propylmercaptan
- 8 2-Butyl mercaptan
- 9 T.H.T.



TKG 1105