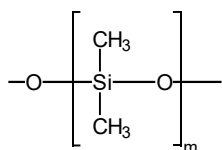


TRB-1

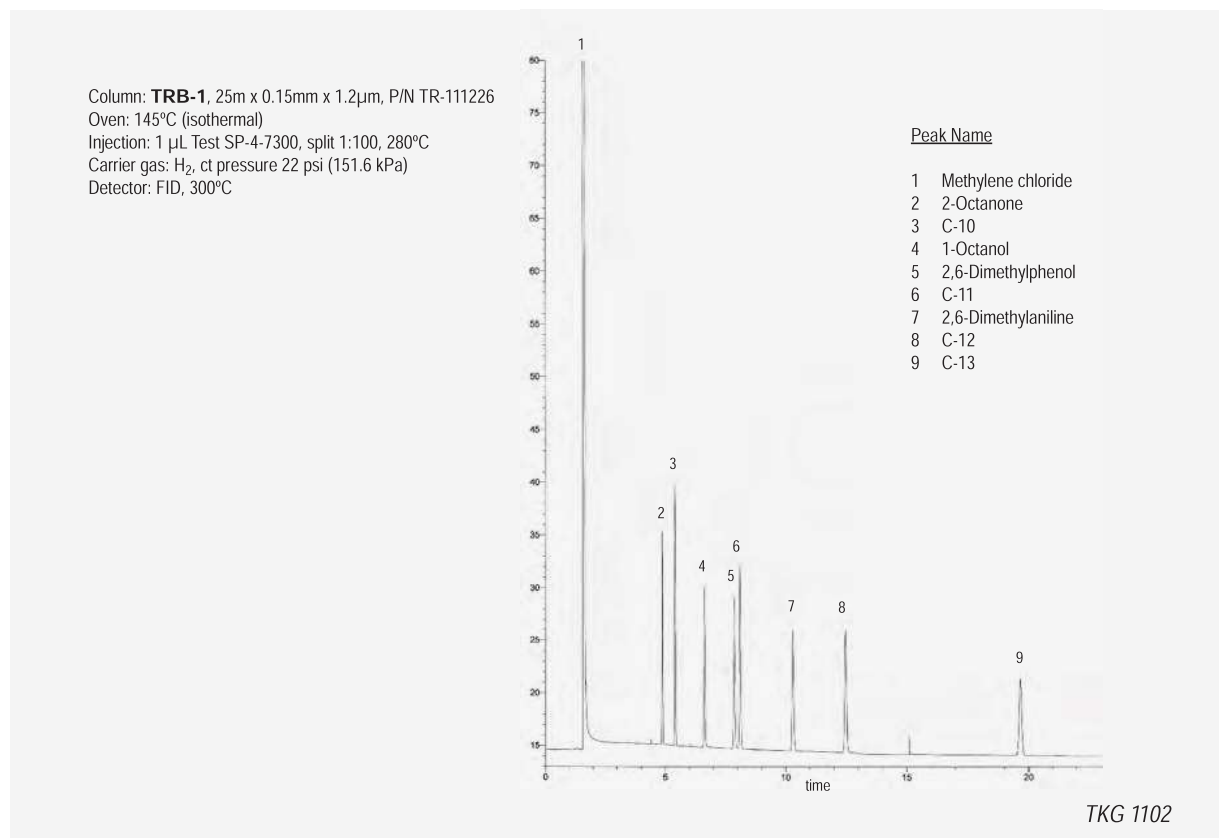
100% Dimethyl polysiloxane, bonded and crosslinked phase

- 100% Dimethyl polysiloxane
- Non-polar phase
- Column for general use
- High thermal stability
- Ideal column for the analysis of petrochemical products and industrial solvents



Structure of Poly (dimethyl) siloxane

TRB-1: Test



TRB-1

Internal Diam.(mm)	Length (m)	Film Thickness (µm)	Temp limits (°C)	Part. N°. (P/N)
0,10	5	0,12	-60 to 325/350	TR-1107A1
	10	0,10	-60 to 325/350	TR-110141
	10	0,40	-60 to 320/340	TR-110441
	20	0,10	-60 to 325/350	TR-110181
	20	0,40	-60 to 320/340	TR-110481
	40	0,20	-60 to 325/350	TR-1121C1
	40	0,40	-60 to 320/340	TR-1104C1

Internal Diam.(mm)	Length (m)	Film Thickness (µm)	Temp limits (°C)	Part. N°. (P/N)
0,18	10	0,18	-60 to 325/350	TR-110944
	10	0,20	-60 to 325/350	TR-112144
	10	0,40	-60 to 325/350	TR-110444
	20	0,18	-60 to 325/350	TR-110984
	20	0,40	-60 to 325/350	TR-110484
	40	0,40	-60 to 325/350	TR-1104C4



Teknokroma Capillary Columns

Internal Diam.(mm)	Length (m)	Film Thickness (µm)	Temp limits (°C)	Part. N°. (P/N)
0,20	12	0,33	-60 to 325/350	TR-1133B9
	15	0,15	-60 to 325/350	TR-111319
	15	0,35	-60 to 325/350	TR-110319
	15	0,50	-60 to 325/350	TR-110519
	25	0,15	-60 to 325/350	TR-111329
	25	0,33	-60 to 325/350	TR-113329
	25	0,35	-60 to 325/350	TR-110329
	25	0,50	-60 to 325/350	TR-110529
	30	0,15	-60 to 325/350	TR-111339
	30	0,35	-60 to 325/350	TR-110339
	30	0,50	-60 to 325/350	TR-110539
	50	0,15	-60 to 325/350	TR-111359
	50	0,33	-60 to 325/350	TR-113359
	50	0,35	-60 to 325/350	TR-110359
	60	0,15	-60 to 325/350	TR-111369
	60	0,50	-60 to 325/350	TR-110569
0,25	15	0,10	-60 to 325/350	TR-110112
	15	0,25	-60 to 325/350	TR-110212
	15	0,50	-60 to 325/350	TR-110512
	15	1,00	-60 to 325/340	TR-111012
	25	0,10	-60 to 325/350	TR-110122
	25	0,25	-60 to 325/350	TR-110222
	25	0,50	-60 to 325/350	TR-110522
	25	1,00	-60 to 320/340	TR-111022
	30	0,10	-60 to 325/350	TR-110132
	30	0,25	-60 to 325/350	TR-110232
	30	0,50	-60 to 325/350	TR-110532
	30	1,00	-60 to 320/340	TR-111032
	50	0,10	-60 to 325/350	TR-110152
	50	0,25	-60 to 325/350	TR-110252
	50	0,50	-60 to 325/350	TR-110552
	50	1,00	-60 to 320/340	TR-111052
	60	0,10	-60 to 325/350	TR-110162
	60	0,25	-60 to 325/350	TR-110262
	60	0,50	-60 to 325/350	TR-110562
	60	1,00	-60 to 325/350	TR-111062
	100	1,00	-60 to 325/350	TR-111092
	105	1,00	-60 to 325/350	TR-1110K2
0,32	15	0,10	-60 to 325/350	TR-110113
	15	0,25	-60 to 325/350	TR-110213
	15	0,50	-60 to 325/350	TR-110513
	15	1,00	-60 to 325/350	TR-111013
	15	3,00	-60 to 280/300	TR-113013
	25	0,10	-60 to 325/350	TR-110123
	25	0,25	-60 to 325/350	TR-110223
	25	0,50	-60 to 325/350	TR-110523
	25	1,00	-60 to 325/350	TR-111023
	25	3,00	-60 to 280/300	TR-113023
	30	0,10	-60 to 325/350	TR-110133
	30	0,25	-60 to 325/350	TR-110233

Internal Diam.(mm)	Length (m)	Film Thickness (µm)	Temp limits (°C)	Part. N°. (P/N)
	30	0,50	-60 to 325/350	TR-110533
	30	1,00	-60 to 325/350	TR-111033
	30	3,00	-60 to 280/300	TR-113033
	50	0,10	-60 to 325/350	TR-110153
	50	0,25	-60 to 325/350	TR-110253
	50	0,50	-60 to 325/350	TR-110553
	50	1,00	-60 to 325/350	TR-111053
	50	3,00	-60 to 280/300	TR-113053
	60	0,10	-60 to 325/350	TR-110163
	60	0,25	-60 to 325/350	TR-110263
	60	0,50	-60 to 325/350	TR-110563
	60	1,00	-60 to 325/350	TR-111063
	60	3,00	-60 to 280/300	TR-113063
	60	5,00	-60 to 260/280	TR-115063
0,53	10	2,65	-60 to 300/310	TR-112645
	15	0,10	-60 to 320/340	TR-110115
	15	0,50	-60 to 320/340	TR-110515
	15	1,50	-60 to 310/330	TR-111515
	15	3,00	-60 to 270/290	TR-113015
	15	5,00	-60 to 270/290	TR-115015
	15	7,00	-60 to 260/280	TR-117015
	25	0,10	-60 to 320/340	TR-110125
	25	0,50	-60 to 320/340	TR-110525
	25	1,50	-60 to 310/330	TR-111525
	25	3,00	-60 to 270/290	TR-113025
	25	5,00	-60 to 270/290	TR-115025
	30	0,10	-60 to 320/340	TR-110135
	30	0,50	-60 to 320/340	TR-110535
	30	0,88	-60 to 310/330	TR-110835
	30	1,50	-60 to 310/330	TR-111535
	30	2,65	-60 to 270/290	TR-112635
	30	3,00	-60 to 270/290	TR-113035
	30	5,00	-60 to 270/290	TR-115035
	30	7,00	-60 to 260/280	TR-117035
	50	0,10	-60 to 320/340	TR-110155
	50	0,50	-60 to 320/340	TR-110555
	50	1,50	-60 to 310/330	TR-111555
	50	3,00	-60 to 270/290	TR-113055
	50	5,00	-60 to 270/290	TR-115055
	60	0,10	-60 to 320/340	TR-110165
	60	0,50	-60 to 320/340	TR-110565
	60	1,50	-60 to 310/330	TR-111565
	60	3,00	-60 to 270/290	TR-113065
	60	5,00	-60 to 270/290	TR-115065
	60	7,00	-60 to 240/260	TR-117065
	100	3,00	-60 to 270/290	TR-113095
	105	3,00	-60 to 270/290	TR-1130K5