

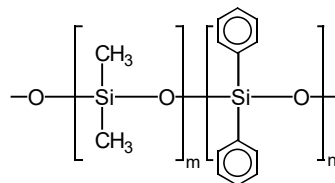


Teknokroma Capillary Columns

TRB-5

95% Dimethyl- 5% diphenyl polysiloxane, bonded and crosslinked phase.

- Most versatile and universal stationary phase in the gas chromatography analysis field
- Characteristic affinity towards compounds with aromatic rings.
- Great thermal stability and chemical inertness for analyzing acidic and basic compounds
- **Ideal for analysis in the environmental field;** dioxines, PCB's, PCT's, polyaromatic compounds, phenols, herbicides, organochlorinated and organophosphorus pesticides, aromatic hydrocarbons, solvents, drugs, oils, etc...



Structure of Poly (dimethyldiphenyl) siloxane

TRB-5 Equivalent Phase

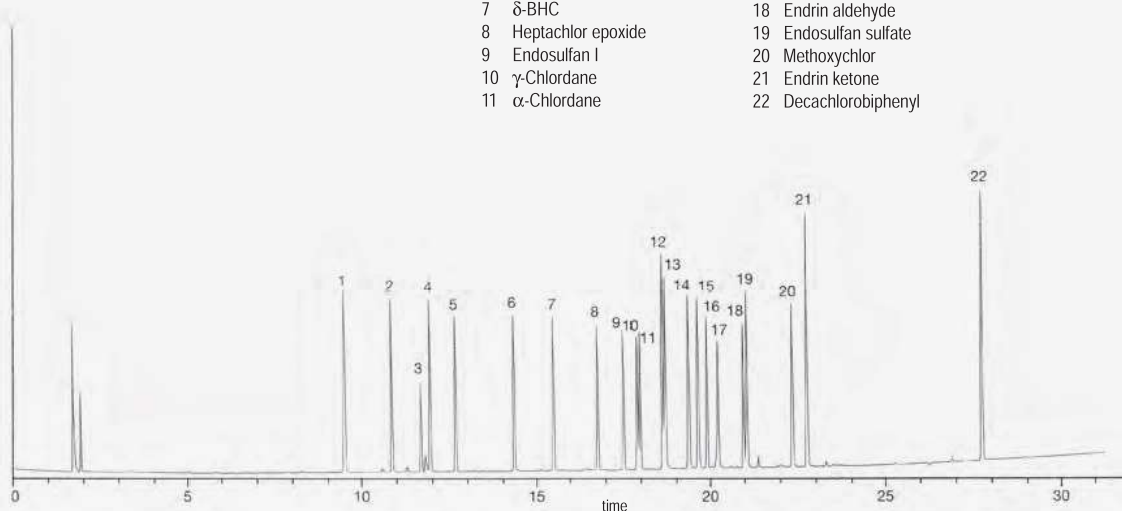
Restek: Rtx-5
Agilent: HP-5, Ultra-2, DB-5, CP-SIL8CB
Supelco: SPB-5, MDN-5
Macherey-Nagel: OPTIMA-5
Phenomenex: ZB-5
SGE: BP5

TRB-5: CHLORINATED PESTICIDES

Column: **TRB-5**, 30 m x 0.25 mm x 0.25 µm, P/N TR-120232
Injection: 1 µL chlorinated pesticides mixture, splitless @ 230°C (25-270 ppb on column)
Oven: 150°C to 225°C (10 min.) @ 2°C/min
Carrier gas: H₂, ct pressure 12 psi (87.7 kPa) 150°C
Detector: ECD, 310°C

Peak Name

1	2,4,5,6-Tetrachloro- <i>m</i> -xylene	12	4,4'-DDE
2	γ-BHC	13	Dieldrin
3	δ-BHC	14	Endrin
4	Heptachlor	15	4,4'-DDD
5	Aldrin	16	Endosulfan II
6	β-BHC	17	4,4'-DDT
7	δ-BHC	18	Endrin aldehyde
8	Heptachlor epoxide	19	Endosulfan sulfate
9	Endosulfan I	20	Methoxychlor
10	γ-Chlordane	21	Endrin ketone
11	α-Chlordane	22	Decachlorobiphenyl



TKG 1109

Teknokroma Capillary Columns



TRB-5

Internal Diam.(mm)	Length (m)	Film Thickness (µm)	Temp limits (°C)	Part.	
				N°. (P/N)	
0,10	10	0,10	-60 to 325/350	TR-120141	
	10	0,17	-60 to 320/350	TR-121941	
	10	0,33	-60 to 320/350	TR-123341	
	10	0,40	-60 to 320/350	TR-120441	
	20	0,10	-60 to 325/350	TR-120181	
	20	0,40	-60 to 320/350	TR-120481	
0,18	10	0,18	-60 to 325/350	TR-120944	
	10	0,40	-60 to 325/350	TR-120444	
	20	0,18	-60 to 325/350	TR-120984	
	20	0,40	-60 to 325/350	TR-120484	
	40	0,18	-60 to 325/350	TR-1209C4	
0,20	12	0,18	-60 to 325/350	TR-1233B9	
	15	0,15	-60 to 325/350	TR-121319	
	15	0,35	-60 to 325/350	TR-120319	
	15	0,50	-60 to 325/350	TR-120519	
	25	0,15	-60 to 325/350	TR-121329	
	25	0,33	-60 to 325/350	TR-123329	
	25	0,35	-60 to 325/350	TR-120329	
	25	0,50	-60 to 325/350	TR-120529	
	30	0,15	-60 to 325/350	TR-121339	
	30	0,35	-60 to 325/350	TR-120339	
	30	0,50	-60 to 325/350	TR-120539	
	50	0,15	-60 to 325/350	TR-121359	
	50	0,33	-60 to 325/350	TR-123359	
	50	0,35	-60 to 325/350	TR-120359	
	50	0,50	-60 to 325/350	TR-120559	
	60	0,15	-60 to 325/350	TR-121369	
	60	0,35	-60 to 325/350	TR-120369	
	60	0,50	-60 to 325/350	TR-120569	
	0,25	15	0,10	-60 to 325/350	TR-120112
		15	0,25	-60 to 325/350	TR-120212
15		0,50	-60 to 325/350	TR-120512	
15		1,00	-60 to 320/350	TR-121012	
25		0,10	-60 to 325/350	TR-120122	
25		0,25	-60 to 325/350	TR-120222	
25		0,50	-60 to 325/350	TR-120522	
25		1,00	-60 to 320/350	TR-121022	
30		0,10	-60 to 325/350	TR-120132	
30		0,25	-60 to 325/350	TR-120232	
30		0,50	-60 to 325/350	TR-120532	
30		1,00	-60 to 320/350	TR-121032	
50		0,10	-60 to 325/350	TR-120152	
50		0,25	-60 to 325/350	TR-120252	
50		0,50	-60 to 325/350	TR-120552	
50		1,00	-60 to 320/350	TR-121052	
60		0,10	-60 to 325/350	TR-120162	
60		0,25	-60 to 325/350	TR-120262	
60		0,50	-60 to 325/350	TR-120562	
60		1,00	-60 to 325/350	TR-121062	
0,32	15	0,10	-60 to 325/350	TR-120113	
	15	0,25	-60 to 325/350	TR-120213	

TRB-5

Internal Diam.(mm)	Length (m)	Film Thickness (µm)	Temp limits (°C)	Part.
				N°. (P/N)
0,32	15	0,50	-60 to 325/350	TR-120513
	15	1,00	-60 to 325/350	TR-121013
	15	3,00	-60 to 280/350	TR-123013
	25	0,10	-60 to 325/350	TR-120123
	25	0,25	-60 to 325/350	TR-120223
	25	0,50	-60 to 325/350	TR-120523
	25	1,00	-60 to 325/350	TR-121023
	25	3,00	-60 to 280/350	TR-123023
	30	0,10	-60 to 325/350	TR-120133
	30	0,25	-60 to 325/350	TR-120233
	30	0,50	-60 to 325/350	TR-120533
	30	1,00	-60 to 325/350	TR-121033
	30	3,00	-60 to 280/350	TR-123033
	50	0,10	-60 to 325/350	TR-120153
	50	0,25	-60 to 325/350	TR-120253
	50	0,50	-60 to 325/350	TR-120553
	50	1,00	-60 to 325/350	TR-121053
	50	3,00	-60 to 280/350	TR-123053
	60	0,10	-60 to 325/350	TR-120163
	60	0,25	-60 to 325/350	TR-120263
60	0,50	-60 to 325/350	TR-120563	
60	1,00	-60 to 325/350	TR-121063	
60	3,00	-60 to 280/350	TR-123063	
0,53	10	2,65	-60 to 270/290	TR-122645
	15	0,10	-60 to 320/340	TR-120115
	15	0,50	-60 to 320/340	TR-120515
	15	1,50	-60 to 310/330	TR-121515
	15	3,00	-60 to 270/290	TR-123015
	15	5,00	-60 to 270/290	TR-125015
	25	0,10	-60 to 320/340	TR-120125
	25	0,50	-60 to 320/340	TR-120525
	25	1,50	-60 to 310/330	TR-121525
	25	3,00	-60 to 270/290	TR-123025
	25	5,00	-60 to 270/290	TR-125025
	30	0,10	-60 to 320/340	TR-120135
	30	0,50	-60 to 320/340	TR-120535
	30	0,88	-60 to 310/330	TR-120835
	30	1,50	-60 to 310/330	TR-121535
	30	2,65	-60 to 270/290	TR-122635
	30	3,00	-60 to 270/290	TR-123035
	30	5,00	-60 to 270/290	TR-125035
	50	0,10	-60 to 320/340	TR-120155
	50	0,50	-60 to 320/340	TR-120555
50	1,50	-60 to 310/330	TR-121555	
50	3,00	-60 to 270/290	TR-123055	
50	5,00	-60 to 270/290	TR-125055	
60	0,10	-60 to 320/340	TR-120165	
60	0,50	-60 to 320/340	TR-120565	
60	1,50	-60 to 310/330	TR-121565	
60	3,00	-60 to 270/290	TR-123065	
60	5,00	-60 to 270/290	TR-125065	