

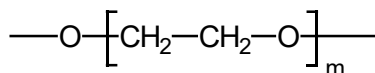


Teknokroma Capillary Columns

TRB-WAX

100% polyethylene glycol, bonded and cross-linked phase.

- High polarity column
- Ideal for separating alcohols, aldehydes, ketones and aromatic isomers (BTX)



Structure of Polyethylene glycol

TRB-WAX Equivalent Phase

Agilent: HP-INNOWAX, DB-WAX, CP-WAX 52 CB, HP-20M, HP-WAX

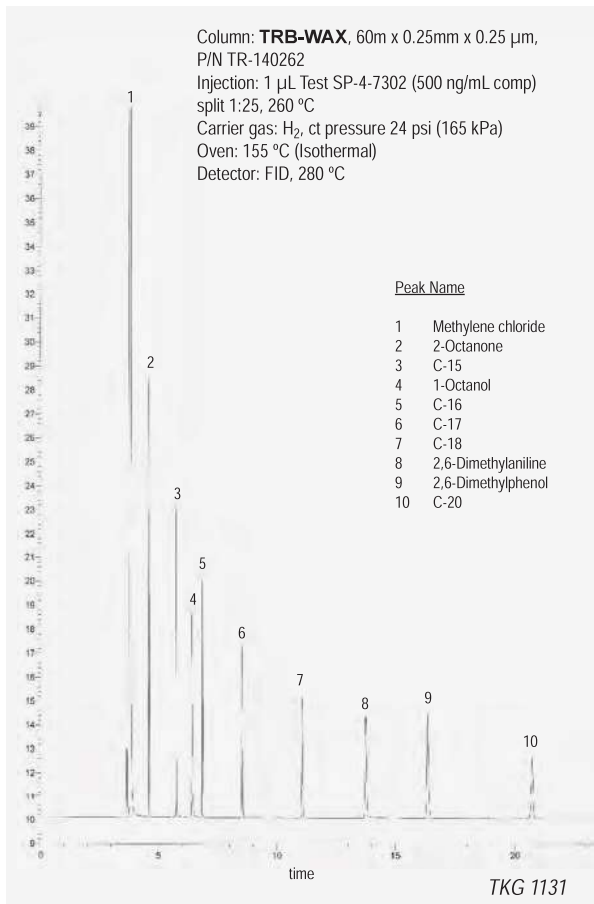
Supelco: Carbowax 20M

Restek: STABILWAX, Rtx-WAX

SGE: BP20

Phenomenex: ZB-WAX

TRB-WAX: SP-4-7302 Test



TRB-WAX

Internal Diam.(mm)	Length (m)	Film Thickness (µm)	Temp limits (°C)	Part. N°. (P/N)
0,10	10	0,10	40 to 260/270	TR-140141
	10	0,20	40 to 260/270	TR-142141
	20	0,10	40 to 260/270	TR-140181
	20	0,20	40 to 260/270	TR-142181
0,20	15	0,20	40 to 260/270	TR-142119
	15	0,40	40 to 260/270	TR-140419
	30	0,20	40 to 260/270	TR-142139
	30	0,40	40 to 260/270	TR-140439
	60	0,20	40 to 260/270	TR-142169
	60	0,40	40 to 260/270	TR-140469
0,25	15	0,10	40 to 260/270	TR-140112
	15	0,25	40 to 260/270	TR-140212
	15	0,50	40 to 260/270	TR-140512
	30	0,10	40 to 260/270	TR-140132
	30	0,25	40 to 260/270	TR-140232
	30	0,50	40 to 260/270	TR-140532
	30	1,00	40 to 260/270	TR-141032
	60	0,10	40 to 260/270	TR-140162
	60	0,25	40 to 260/270	TR-140262
	60	0,50	40 to 260/270	TR-140562
0,32	15	0,10	40 to 260/270	TR-140113
	15	0,25	40 to 260/270	TR-140213
	15	0,50	40 to 260/270	TR-140513
	30	0,10	40 to 260/270	TR-140133
	30	0,25	40 to 260/270	TR-140233
	30	0,50	40 to 260/270	TR-140533
	50	1,20	40 to 230/240	TR-141253
	60	0,10	40 to 260/270	TR-140163
	60	0,25	40 to 260/270	TR-140263
	60	0,50	40 to 260/270	TR-140563
60	1,00	40 to 230/240	TR-141063	
60	1,20	40 to 230/240	TR-141263	
100	1,00	40 to 230/240	TR-141093	
0,53	10	1,00	40 to 240/250	TR-141045
	15	1,00	40 to 240/250	TR-141015
	30	1,00	40 to 240/250	TR-141035
	30	1,33	40 to 240/250	TR-141735
	30	2,00	40 to 240/250	TR-142035
	60	1,00	40 to 240/250	TR-141065
60	2,00	40 to 240/250	TR-142065	