

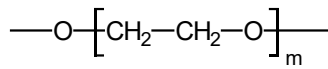


# Teknokroma Capillary Columns

## Meta.WAX

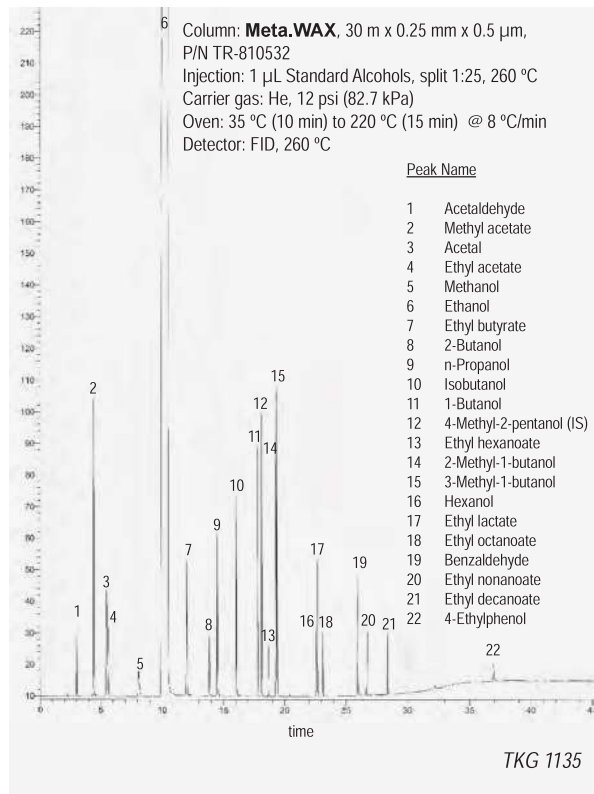
**100% Polyethylene glycol, bonded and cross-linked phase.**

- High polarity column
- Minimum operating temperature 20° C
- Designed for analyzing volatiles in alcoholic beverages
- Excellent symmetry for aldehyde and glycol peaks



Structure of Polyethylene glycol

## Meta.WAX: Alcohols



## Meta.WAX Equivalent Phase

**Agilent:** HP-WAX, DB-WAX, CP-WAX 57 CB, DB-WAX FF  
**Restek:** Rtx-WAX  
**Phenomenex:** ZB-WAX  
**SGE:** BP20  
**Supelco:** Nukol

## Meta.WAX

| Internal Diam.(mm) | Length (m)  | Film Thickness (μm) | Temp limits (°C) | Part. N°. (P/N) |           |
|--------------------|-------------|---------------------|------------------|-----------------|-----------|
| <b>0,10</b>        | 10          | 0,10                | 20 to 240/250    | TR-810141       |           |
|                    | 10          | 0,20                | 20 to 240/250    | TR-812141       |           |
|                    | 20          | 0,10                | 20 to 240/250    | TR-810181       |           |
|                    | 20          | 0,20                | 20 to 240/250    | TR-812181       |           |
|                    | <b>0,18</b> | 10                  | 0,18             | 20 to 240/250   | TR-810944 |
|                    |             | 20                  | 0,18             | 20 to 240/250   | TR-810984 |
|                    | 20          | 0,30                | 20 to 240/250    | TR-812984       |           |
|                    | 40          | 0,18                | 20 to 240/250    | TR-8109C4       |           |
|                    | 40          | 0,30                | 20 to 240/250    | TR-8129C4       |           |
| <b>0,25</b>        | 15          | 0,10                | 20 to 240/250    | TR-810112       |           |
|                    | 15          | 0,25                | 20 to 240/250    | TR-810212       |           |
|                    | 15          | 0,50                | 20 to 240/250    | TR-810512       |           |
|                    | 30          | 0,10                | 20 to 240/250    | TR-810132       |           |
|                    | 30          | 0,25                | 20 to 240/250    | TR-810232       |           |
|                    | 30          | 0,50                | 20 to 240/250    | TR-810532       |           |
|                    | 60          | 0,20                | 20 to 240/250    | TR-812162       |           |
|                    | 60          | 0,25                | 20 to 240/250    | TR-810262       |           |
|                    | <b>0,32</b> | 15                  | 0,25             | 20 to 240/250   | TR-810213 |
| 15                 |             | 0,50                | 20 to 240/250    | TR-810513       |           |
| 15                 |             | 1,00                | 20 to 230/240    | TR-811013       |           |
|                    | 30          | 0,25                | 20 to 240/250    | TR-810233       |           |
|                    | 30          | 0,50                | 20 to 240/250    | TR-810533       |           |
|                    | 30          | 1,00                | 20 to 230/240    | TR-811033       |           |
|                    | 60          | 0,25                | 20 to 240/250    | TR-810263       |           |
|                    | 60          | 0,50                | 20 to 240/250    | TR-810563       |           |
|                    | 60          | 0,64                | 20 to 240/250    | TR-816463       |           |
|                    | 60          | 1,00                | 20 to 230/240    | TR-811063       |           |
|                    | <b>0,53</b> | 15                  | 1,00             | 20 to 230/240   | TR-811215 |
| 30                 |             | 1,00                | 20 to 230/240    | TR-811235       |           |