

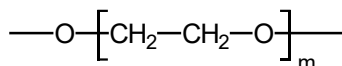


Teknokroma Capillary Columns

TR-WAX.DB

100% Polyethylene glycol, nonbonded phase.

- Basic deactivated Polyethylene glycol (PEG)
- Excellent for analysing basic nonderivatized compounds
- Ideal for separating amines and nitrosamines



Structure of Polyethylene glycol

TR-WAX.DB Equivalent Phase

Agilent: CAM, HP-BasicWax, CP-WAX 51 CB for Amines
CP-WAX for Volatile Amines

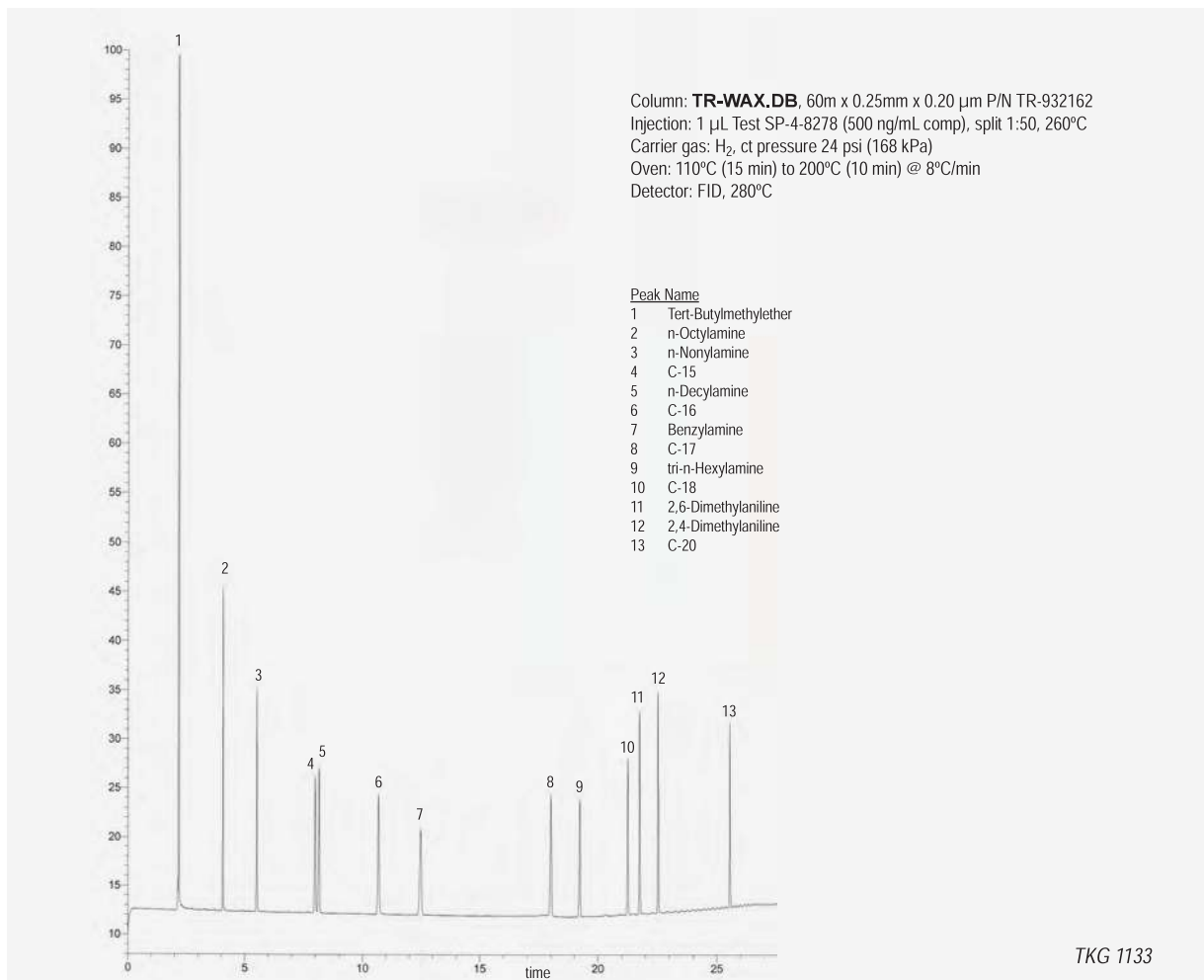
Supelco: Carbowax-Amine

Restek: Stabilwax-DB

TR-WAX.DB

Internal Diam.(mm)	Length (m)	Film Thickness (µm)	Temp limits (°C)	Part. N°. (P/N)
0,25	15	0,20	60 to 210/220	TR-932112
	15	0,25	60 to 210/220	TR-930212
	30	0,20	60 to 210/220	TR-932132
	30	0,25	60 to 210/220	TR-930232
	30	0,50	60 to 210/220	TR-930532
	60	0,20	60 to 210/220	TR-932162
0,32	15	0,25	60 to 210/220	TR-930213
	30	0,25	60 to 210/220	TR-930233
	30	0,50	60 to 210/220	TR-930533
	30	1,00	60 to 210/220	TR-931033
	60	1,00	60 to 210/220	TR-931063
	0,53	15	1,00	60 to 210/220
30		0,50	60 to 210/220	TR-930535
30		1,00	60 to 210/220	TR-931035
30		1,50	60 to 210/220	TR-931535
60		1,00	60 to 210/220	TR-931065

TR-WAX.DB: SP-4-8278 Test



TKG 1133