



Optimill bonnet release cable guard fitting instructions.

The Optimill cable guard is designed to stop unwanted access to the bonnet cable.

Tools Required for fitting:

8mm spanner

¼" drive socket set including 7mm and 9mm socket

Philip's screwdriver

5.0mm Drill bit

2.6mm Drill bit

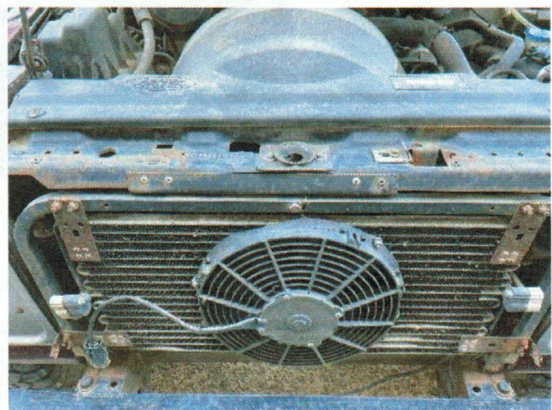
Pop Rivet Gun

4 x 4.8mm Rivets

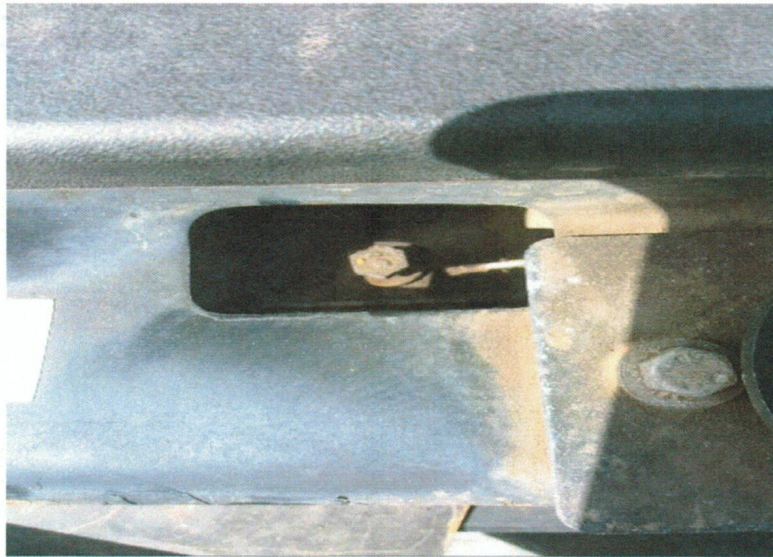
2 x Self Tapping Screws

Remove the front grill, on vehicles that have Air Conditioning there are also two large screws on the side of the front panel. Then remove the four self-tapping screws at the top of the grill into the bonnet slam panel.

For non AC models there are six large screws in the grill, you will then need to remove the grill. On each side of the surround there are bolts, that bolt it to the wings, these need to be removed as well, and then finally the four screws along the top.

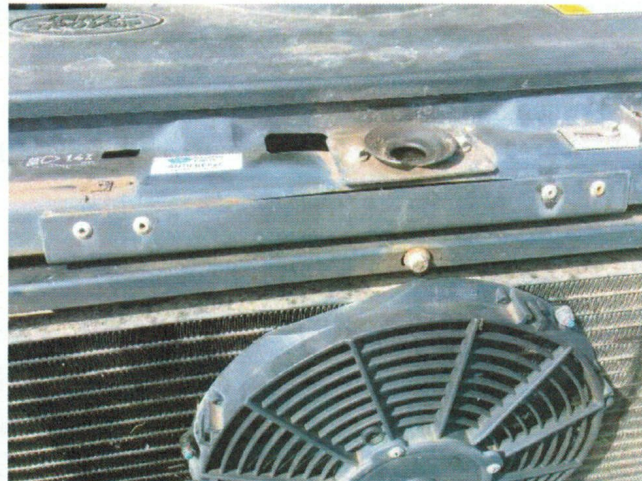


With the grill removed, undo the cable clamp to release the cable inner, using the 7mm socket. This is accessed through this hole in the top panel as shown.



On vehicles without air conditioning, it makes life easier if the two diagonal bracing bars are removed.

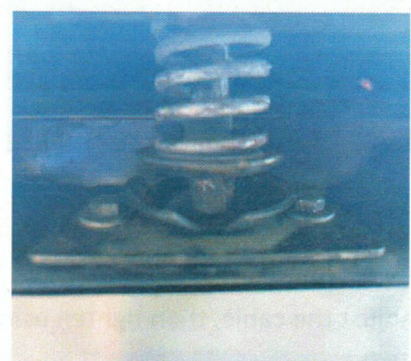
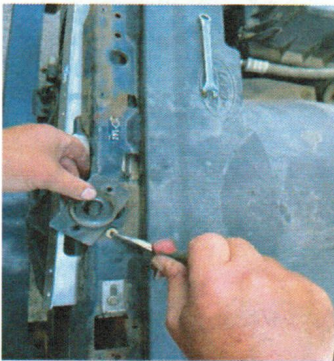
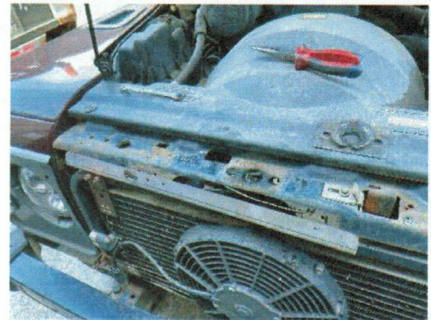
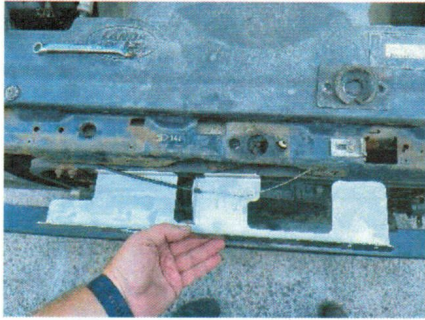
Drill out the four rivets using the 5mm drill on the front of the old cable mounting



Carefully remove the old cable mounting ensuring that the cable clamp does not get lost as this will need to be re used when re-fitting new bracket.

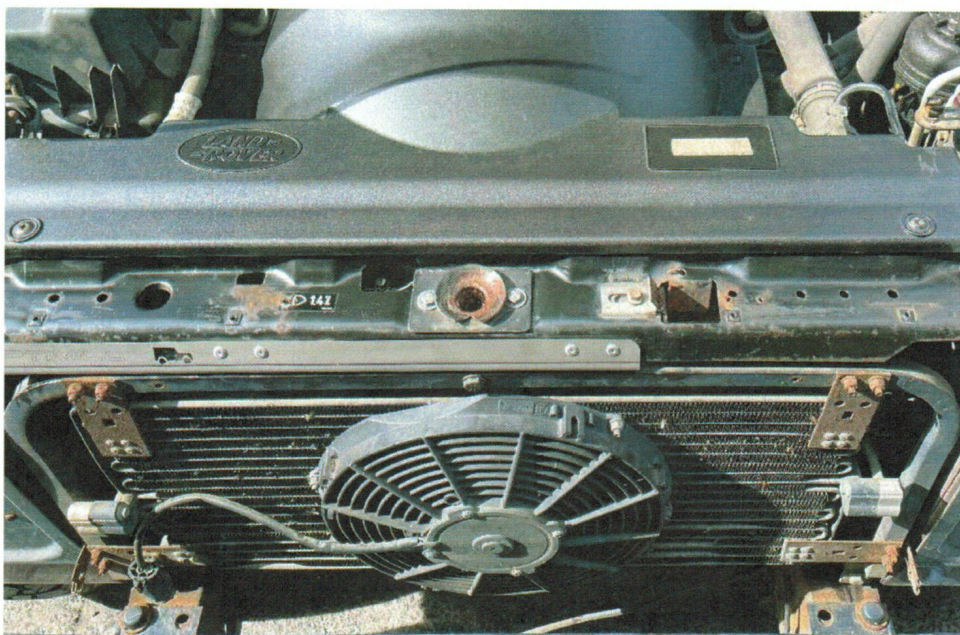
Snap off the small cable adjuster cover from the main cable guard.

Fit the cable through the hole in the new cable guard, threading it through the cable clamp on the bonnet release mechanism,

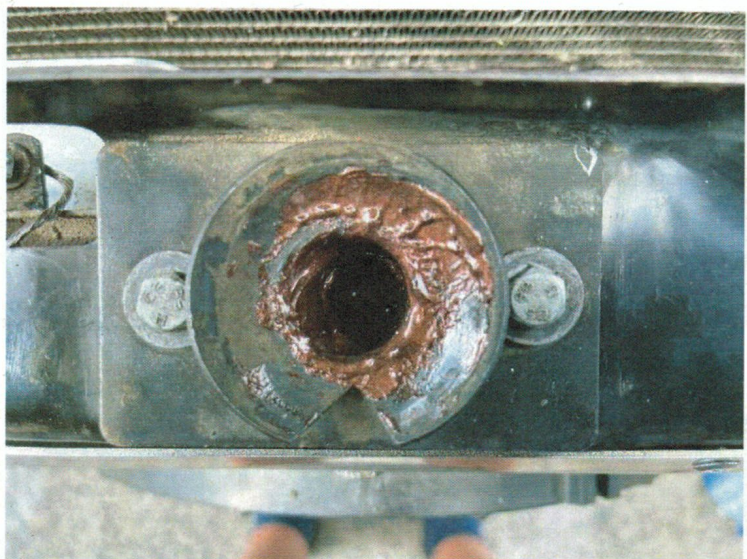
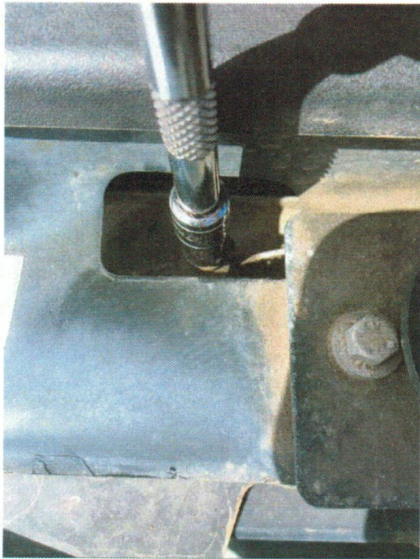


Re fit the Bonnet catch and the diagonal support bars. Adjusting the alignment of the catch.

Do not shut fully at this stage.



Only then do you rivet it in place.



Adjust the cable, then tighten using the socket. Ensure that there is no slack and catch will fully open.

Get someone to operate the bonnet pull, to ensure it releases fully before shutting the bonnet. !!!

This is essential so that you can open the bonnet up when needed!

Refit the grill in the reverse order.

Finally, when satisfied that all is working properly, position the small blanking plate that was broken off earlier over the cable clamp. Spot through the holes one at a time using 5mm drill to mark position of hole then drill 2.6mm and screw the small cover in place.

