

COSY COLLECTION



This selection of textiles, which includes a plush mixture of boucles and semi-plains, is visually and sensorially rich, distinguished by tactile surface textures and the depth of the weave.

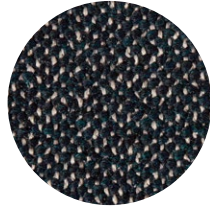
HAY

FAIRWAY

SELECTED COLOURS BY HAY



Grey 307-201



Dark blue 308-288

Note: Due to variations in computer screens, we cannot guarantee that the colours shown here are truly representative of our products.

Collection Cosy

Composition 34% Acrylic, 26% Polyester, 22% Wool, 12% Cotton, 2% Viscose, 2% Linen

Width 140 cm / 55.12"

Price group 2

Martindale 60,000

Lightfastness 5

FIRE RATINGS

/ EN 1021 PART 1 AND 2 (CIGARETTE AND MATCH) - EU

/ CAL117 - US

OPTIONAL FIRE RATINGS (WITH FR TREATMENT)

/ BS 5852 PART 1 IGN 0 (CIGARETTE) - UK

BOLGHERI

SELECTED COLOURS BY HAY



LGG60

Note: Due to variations in computer screens, we cannot guarantee that the colours shown here are truly representative of our products.

Collection Cosy

Composition 35% Viscose, 26% Wool,
17% Polyamide, 15% Silk, 7% Linen

Width 140 cm / 55.12"

Price group 3

Martindale 30,000

Lightfastness 5

FIRE RATINGS

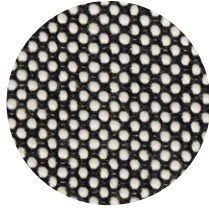
/ EN 1021 PART 1 AND 2 (CIGARETTE AND MATCH) – EU

/ BS 5852 PART 1 IGN 0 (CIGARETTE) – UK

/ CAL 117 – US

DOT 1682

SELECTED COLOURS BY HAY



02 Bianco/Nero



03 Anthracite

Note: Due to variations in computer screens, we cannot guarantee that the colours shown here are truly representative of our products.

Collection Cosy

Composition 55% Wool, 45% Cotton

Width 140 cm / 55.12"

Price group 3

Martindale 50,000

Lightfastness 4-5

FIRE RATINGS

/ EN 1021 PART 1 (CIGARETTE AND MATCH) - EU

/ BS 5852 PART 1 IGN 0 AND IGN 1 (CIGARETTE AND MATCH) - UK

/ CAL117 - US

/ NFPA 260 - US

CARE

FABRICS

- / Vacuum the furniture regularly using the upholstery nozzle to remove dust and avoid fluff and pilling.
- / Straighten the fabric with your hands from time to time. Wrinkles in the fabric can be straightened using a steamer.
- / Soak up spilled liquids immediately with an absorbent napkin or cloth by dabbing gently towards the centre of the stain.
- / Never use concentrated detergents or bleach, ammonia, optical brighteners or soap intended for hard surfaces.
- / We do not recommend spot cleaning of individual marks and stains as this damages the fabric and causes colour loss.
- / If the stain persists, consult a specialist cleaner.
- / On wool fabrics, most stains can be removed with lukewarm water on a clean lint-free cloth. If necessary, add a little neutral detergent.
- / Avoid rubbing the material hard as this could result in loss of colour and damage the fabric.
- / It may also be necessary to use a hairdryer to avoid leaving a water outline.
- / If the stain persists consult a specialist cleaner.

HAY