

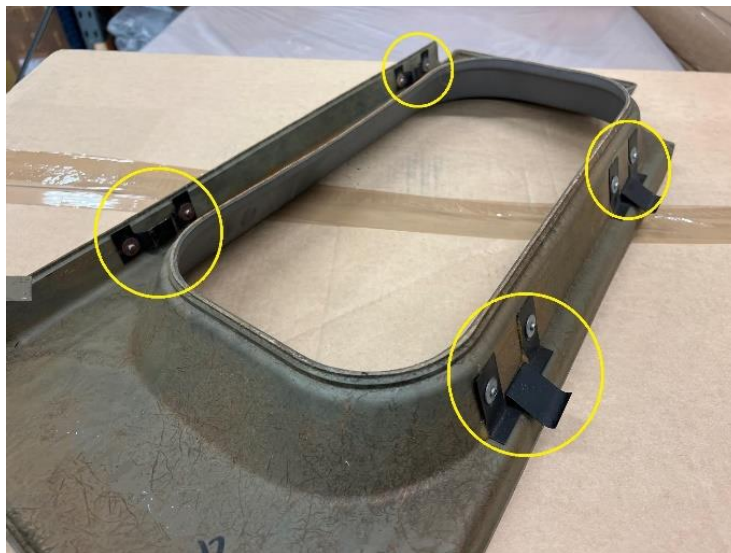
MUD Defender Station Wagon Rear Quarter Window Trims

The installation of the MUD panels replicates the OEM method of securing the Rear Quarter Window Trims in place on the Defender.

NOTE: These MUD trims are designed to fit the pre Tdci model Defender only. Later windows have a different corner radius and the Tdci models use an alternative design of side window and quarter window trim to accommodate the 3-point seat belts for the forward facing tip-up seats.

The various metal fixing brackets are not available to buy from Land Rover as separate parts so we've replicated all the Land Rover fixing brackets to create the fitting kit for the MUD panels. All of our fixings can also be utilised on original Land Rover trim panels.

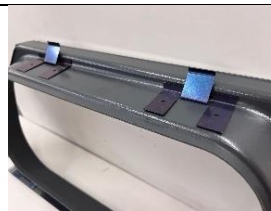
Note the way the four metal brackets fit onto the trim. Pictured below is an original right-hand quarter window trim. The MUD brackets fit in exactly the same way as below. Note that Land Rover uses a washer on the back of their fixing rivets. We chose to make made the fixing holes in our brackets match the rivet size so there's no need for washers!



Large Brackets.

The prongs are designed to tuck behind the end of the side window trims to locate the trim.

The raised edge of the bracket should butt-up against the fold in the trim.



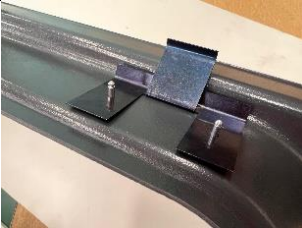





Small Brackets

The smaller top-hat brackets accept the spring clips that grab onto the edge of the door frame.

The edge of the top-hat bracket should sit flush with the edge of the plastic trim.



<p>We've provided witness marks for the fixing hole locations.</p>	
<p>Take note of the location of lower bracketry in lower corners of your door opening. This differs between vehicles. It may be necessary to shift the bottom Top-Hat bracket location on the trim upwards on the door opening in order to allow the spring clip to grab the thinner part of the door edge.</p>	
<p>Drill fixing holes at 3mm.</p>	
<p>Fit plastic cup washer under the head of the 3mm rivet before installation.</p>	
<p>When riveted in place, snap the grey plastic trim cap finishers onto the cup washer.</p>	
<p>Note the correct way the spring clip (BTR6682) fits onto the Top-Hat brackets. The clips are a very tight fit. We use a large diameter punch or similar to push the clip into place on the bracket. These brackets grip the edge of the rear door frame.</p>	
<p>Forked metal prongs tuck behind the end of the side window trim.</p> <p>Plastic outer edge of quarter window trim sits outside of the side window trim.</p> <p>The spring clips on the inside of panel grab onto the door frame edge. Hit the trim with sharply with the palm of your hand to install.</p>	