



Free Crochet Pattern

Mountain Scene Vest



Pattern # -

M22276 HT

Yarn -

Lion Brand® Hometown®

SKILL LEVEL – EASY

SIZE

S-L (Plus)

Finished Chest About 48 (58) in. (122 (147.5) cm)

Finished Length About 25 (26 1/2) in. (63.5 (67.5) cm)

Note: Pattern is written for smallest size with changes for larger size in parentheses. When only one number is given, it applies to both sizes. To follow pattern more easily, circle all numbers pertaining to your size before beginning.

MATERIALS

- LION BRAND® HOMETOWN® (Art. #135)
 - #124 Cocoa Beach 2 (3) balls (A)
 - #180 Ashland Pine 2 (3) balls (B)
 - #238 Catskills Corner 1 (2) ball(s) (C)
 - #237 Sleepy Hollow Spirit 4 (5) balls (D)
- LION BRAND® crochet hook size N-13 (9 mm)
- LION BRAND® large-eyed blunt needle



GAUGE

8 sc + 9 rows = about 4 in. (10 cm).

BE SURE TO CHECK GAUGE.

STITCH EXPLANATIONS

sc-blo (single crochet in back loop only) Insert hook in back loop only of indicated st and draw up a loop, yarn over and draw through 2 loops on hook.

sc2tog (sc 2 sts together) (Insert hook in next st and draw up a loop) twice, yarn over and draw through all 3 loops on hook – 1 st decreased.

NOTES

1. Vest is made in 2 pieces: Front and Back.
2. Front is worked in single crochet (sc), changing yarn color following a Chart.
3. Back is worked in single crochet, changing yarn color in a fun, improvisational way to form stripes.
4. Neck and Armhole Bands are worked separately and sewn to Vest.
5. When following chart, read RS rows of Chart from right to left and WS rows from left to right.

For thousands of free patterns, visit our website www.LionBrand.com

To order visit our website www.lionbrand.com or call: (800) 258-YARN (9276) any time!

Copyright ©1998-2023 Lion Brand Yarn Company, all rights reserved. No pattern or other material may be reproduced -- mechanically, electronically, or by any other means, including photocopying - without written permission of Lion Brand Yarn Company.

6. Each square of Chart represents one single crochet st worked in the indicated color. When following Chart, do not carry yarn across WS of work between color changes, use a separate ball for each section of color.
7. To change yarn color, work last st of old color to last yarn over. Yarn over with new color and draw through all loops on hook to complete st. Proceed with new color. When working Front, do not cut old color until the section of color is complete. When working Back, fasten off old color immediately after each color change.
8. When you see 'as established' in the instructions, this means to continue working in single crochet (sc), lining up sts and yarn colors as in previous rows.

This design is part of our Scenic collection of patterns - meant to inspire makers to personalize their piece with their choice of scene.

We've created 4 Scenic charts that are meant to be interchangeable between the projects.

Any of the charts can be used on whichever piece you choose to make, whether knit or crochet.

Before beginning, review the suggested colors for the specific chart you intend to use! And of course always feel free to change the colors as you like.

FRONT

Lower Band

With B, ch 7.

Row 1: Sc in 2nd ch from hook and in each ch across – you will have 6 sc in this row.

Row 2: Ch 1, turn, sc-blo in each st to last st, sc in last st.

Rep Row 2 until piece measures about 24 (29) in. (61 (73.5) cm) from beg, slightly stretched.

Fasten off.

Charted Mountain Scene

Row 1 (RS): Working in ends of row along one long edge of lower band, join D with sl st in beg corner of band, work 48 (58) sc evenly spaced across band AND change yarn color as follows: With D, work first 4 (9) sc, work next 40 sc AND change yarn color following Row 1 of Chart; with D, work last 4 (9) sc.

Rows 2-30: With D, ch 1, turn, sc in first 4 (9) sts; sc in next 40 sts AND change yarn color following next row of Chart; with D, sc in last 4 (9) sts.

Shape Armholes

Row 31 (RS): With D, ch 1, turn, sl st in first 6 (8) sts, sc in each st across to last 6 (8) sts AND change yarn color following Row 31 of Chart as established; leave last 6 (8) sts unworked – 36 (42) sc.

Rows 32-40: Ch 1, turn, sc in each st across AND change yarn color following next row of Chart as established.

Fasten off all yarn colors, except D, work remainder of piece with D only.

Rows 41-42 (46): Ch 1, turn, sc in each st across.

Shape Neck

Left Side of Neck

Row 1 (RS): Ch 1, turn, sc in first 14 (16) sts; leave rem sts unworked for neck and right side of neck – 14 (16) sc.

Row 2: Ch 1, turn, sc2tog, sc in each st across – 13 (15) sc.

Row 3: Ch 1, turn, sc in each st to last 2 sts, sc2tog – 12 (14) sc.

Rows 4 and 5: Rep Rows 2 and 3 – 10 (12) sc in Row 5.

Row 6: Ch 1, turn, sc in each st across.

Shape Left Shoulder

Row 1 (RS): Ch 1, turn, sl st in first 5 (6) sts, sc in next 5 (6) sts.

Fasten off, leaving a long tail for sewing.

Right Side of Neck

Row 1 (RS): From RS, skip next 8 (10) unworked sts following end of first row of left side of neck, join D with sc in next st and sc in each st across – 14 (16) sc.

Row 2: Ch 1, turn, sc in each st to last 2 sts, sc2tog – 13 (15) sc.

Row 3: Ch 1, turn, sc2tog, sc in each st across – 12 (14) sc.

Rows 4 and 5: Rep Rows 2 and 3 – 10 (12) sc in Row 5.

Row 6 (RS): Ch 1, turn, sc in each st across.

Shape Right Shoulder

Row 1: Ch 1, turn, sc in first 5 (6) sts, sl st in next 5 (6) sts.

Fasten off, leaving a long tail for sewing.

BACK

Lower Band

Make same as Lower Band for Front.

Body

Body of Back is worked in single crochet (sc), changing yarn colors to form stripes.

The stripe widths and colors are up to you!

All of the colors in this project work well together, so have fun and place colors however you like.

Take a moment to review your remaining yarn before beginning to determine which colors you have more of.

We suggest making each stripe an odd number of rows – this way, your yarn tails won't all be on one side of the piece.

Row 1 (RS): Working in ends of row along one long edge of lower band, join yarn color of your choice with sl st in beg corner of band, work 48 (58) sc evenly spaced across band.

Rows 2-30: Ch 1, turn, sc in each st across.

Shape Armholes

Row 31 (RS): Ch 1, turn, sl st in first 6 (8) sts, sc in each st across to last 6 (8) sts; leave last 6 (8) sts unworked – 36 (42) sc.

Rows 32-48 (52): Ch 1, turn, sc in each st across.

Shape Shoulders

Row 1 (RS): Ch 1, turn, sl st in first 5 (6) sts, sc in next 26 (30) sts, sl st in last 5 (6) sts – 26 (30) sc.

Fasten off.

FINISHING

Sew shoulder seams, sewing 10 (12) sts together for each shoulder and leaving 16 (18) sts unsewn at center for back neck.

Neck Band

With B, ch 5.

Row 1: Sc in 2nd ch from hook and in each ch across – 4 sc.

Row 2: Ch 1, turn, sc-blo in each st to last st, sc in last st.

Rep Row 2 until piece, when slightly stretched, fits around neck edge.

Fasten off.

Sew Neck Band around neck edge.

Armhole Bands (make 2)

With B, ch 5.

Row 1: Sc in 2nd ch from hook and in each ch across – 4 sc.

Row 2: Ch 1, turn, sc-blo in each st to last st, sc in last st.

Rep Row 2 until piece, when slightly stretched, fits around armhole.

Fasten off.

Sew an Armhole Band to each armhole edge.

Sew side seams, including edges of bands.

Weave in ends.

ABBREVIATIONS

beg = begin(ning)(s)

ch = chain

rem = remain(ing)

rep = repeat

RS = right side

sc = single crochet

sl st = slip stitch

st(s) = stitch(es)

WS = wrong side



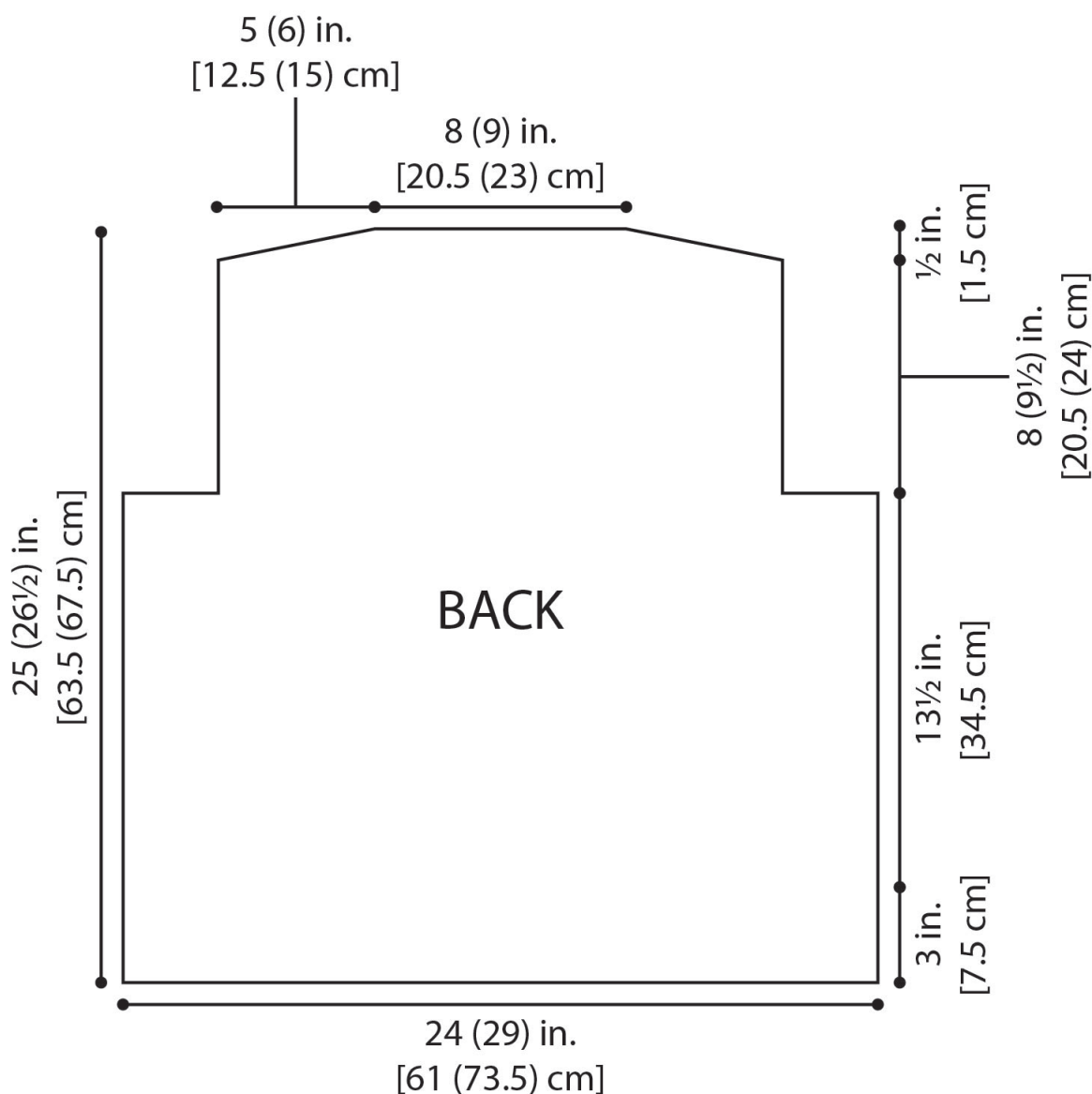
Every effort has been made to produce accurate and complete instructions. We cannot be responsible for variance of individual knitters or crocheters, human error, or typographical mistakes.

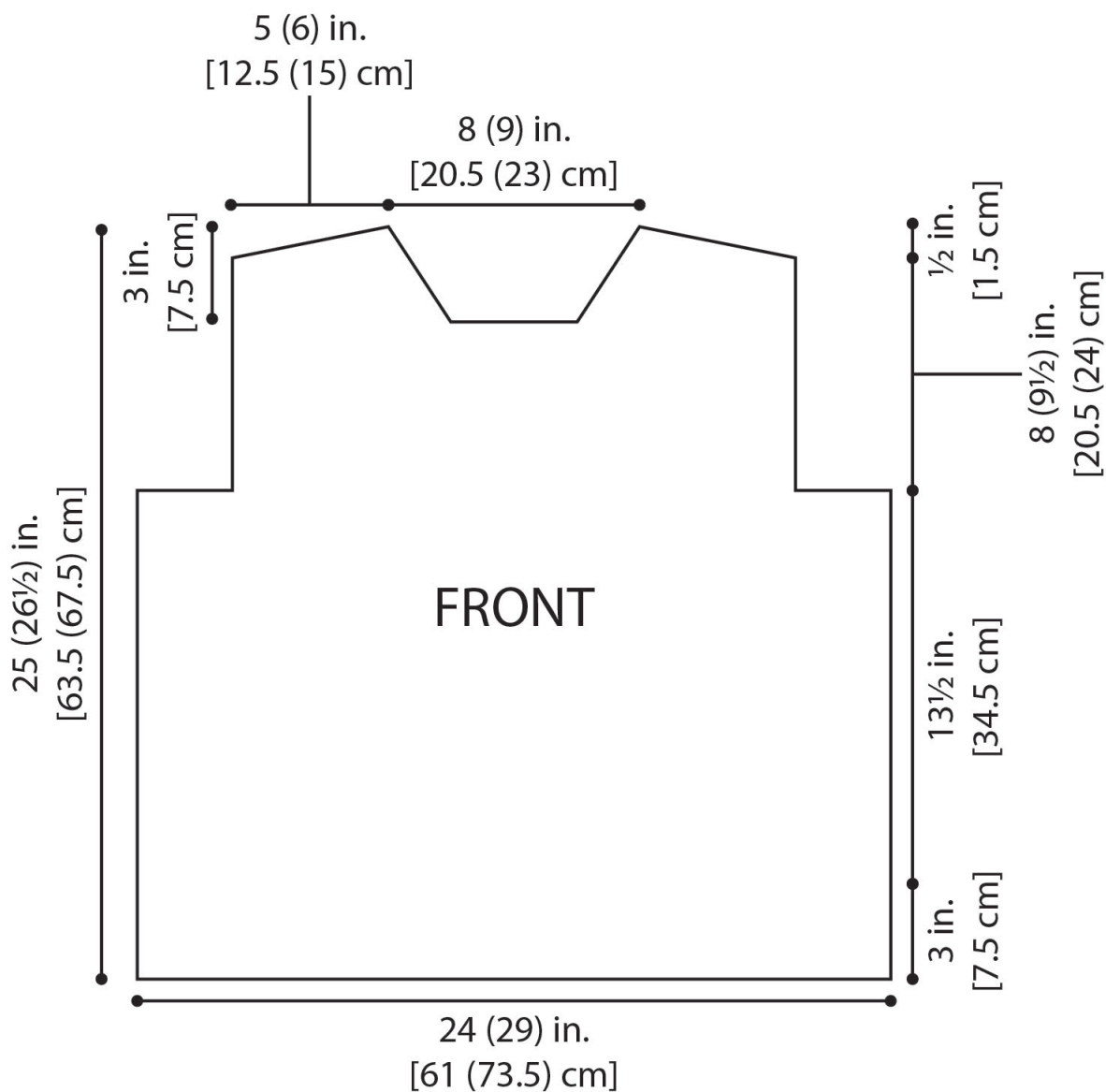
©2023 Lion Brand Yarn Company, all rights reserved.

For thousands of free patterns, visit our website www.LionBrand.com

To order visit our website www.lionbrand.com or call: (800) 258-YARN (9276) any time!

Copyright ©1998-2023 Lion Brand Yarn Company, all rights reserved. No pattern or other material may be reproduced -- mechanically, electronically, or by any other means, including photocopying - without written permission of Lion Brand Yarn Company.

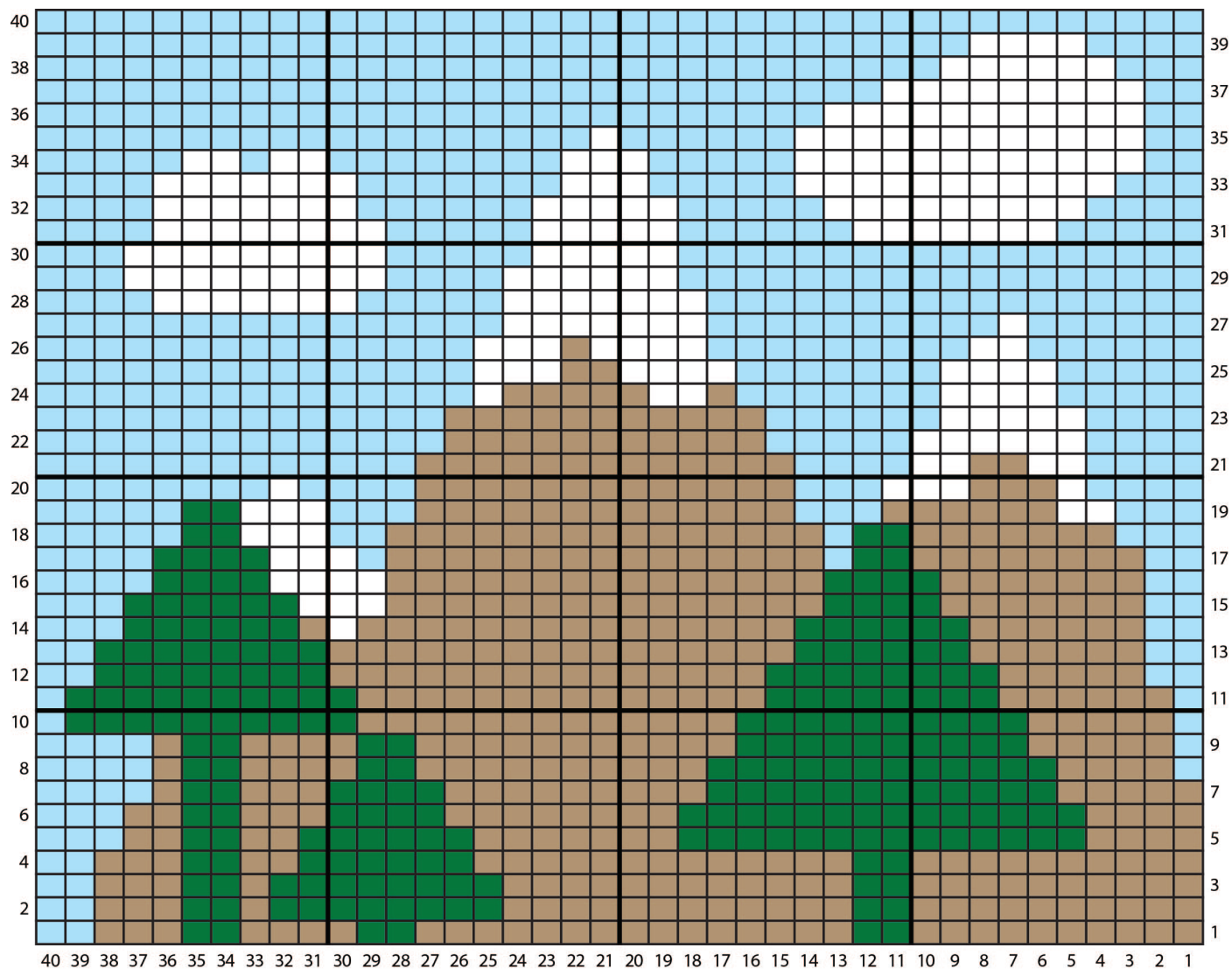




For thousands of free patterns, visit our website www.LionBrand.com

To order visit our website www.lionbrand.com or call: (800) 258-YARN (9276) any time!

Copyright ©1998-2023 Lion Brand Yarn Company, all rights reserved. No pattern or other material may be reproduced -- mechanically, electronically, or by any other means, including photocopying - without written permission of Lion Brand Yarn Company.



COLOR KEY	
	#124 Cocoa Beach (A)
	#180 Ashland Pine (B)
	#238 Catskills Corner (C)
	#237 Sleepy Hollow Spirit (D)