



Free Knitting Pattern

Farm Scene Cardigan



Pattern #-

M22274 HT

Yarn-

Lion Brand® Hometown®

SKILL LEVEL – EASY

SIZE

S-L (Plus)

Finished Chest About 48 (58) in. (122 (147.5) cm)

Finished Length About 25 (26) in. (63.5 (66) cm)

Note: Pattern is written for smallest size with changes for larger size in parentheses. When only one number is given, it applies to both sizes. To follow pattern more easily, circle all numbers pertaining to your size before beginning.

MATERIALS

- LION BRAND® HOMETOWN® (Art. #135)
 - #130 Green Bay 1 (2) ball(s) (A)
 - #100 New York White 1 (2) ball(s) (B)
 - #237 Sleepy Hollow Spirit 5 (6) ball(s) (C)
 - #114 Tampa Spice 1 (2) ball(s) (D)
 - #153 South Dakota Black 1 (2) ball(s) (E)
- LION BRAND® knitting needles size 13 (9 mm)
- LION BRAND® stitch markers
- LION BRAND® large-eyed blunt needle



ADDITIONAL MATERIALS

Circular knitting needle size 13 (9 mm), 36 in. (90 cm) long for Front and Neck Band.

GAUGE

10 sts = about 4 1/4 in. (11 cm); 12 rows = about 3 3/4 in. (9.5 cm).

BE SURE TO CHECK GAUGE.

STITCH EXPLANATIONS

M1 (make 1) An increase worked by lifting the horizontal strand lying between needles and placing it onto the left needle. Knit this new stitch through the back loop – 1 st increased.

ssk (slip, slip, knit) Slip next 2 sts as if to knit, one at a time, to right needle; insert left needle into fronts of these 2 sts and knit them tog – 1 st decreased.

PATTERN STITCHES

K1, p1 Rib (worked over an even number of sts)

Row 1: *K1, p1; rep from * to end of row.

Row 2: K the knit sts and p the purl sts.

Rep Row 2 for K1, p1 Rib.

NOTES

1. Cardigan is made in 5 pieces: Back, 2 Fronts, and 2 Sleeves.
2. Fronts and Sleeves are worked in St st (k on RS, p on WS), changing yarn color to form stripes.
3. Back is worked in St st and intarsia colorwork, changing yarn color following Chart.
4. Front and Neck Band is worked in one piece directly onto neck and front edges.
5. When following chart, read RS rows of Chart from right to left and WS rows from left to right. When working intarsia, do not carry yarn across WS of work between color changes, use a separate ball for each section of color. When changing color, twist yarns on WS to prevent holes.
6. A circular needle is used to accommodate sts of Front and Neck Band. Work back and forth in rows on circular needle as if working on straight needles.
7. When you see work 'even' in the instructions, this means to continue on in the pattern st you have established without changing the st count by increasing, decreasing, or binding off.

This design is part of our Scenic collection of patterns - meant to inspire makers to personalize their piece with their choice of scene.

We've created 4 Scenic charts that are meant to be interchangeable between the projects.

Any of the charts can be used on whichever piece you choose to make, whether knit or crochet.

Before beginning, review the suggested colors for the specific chart you intend to use! And of course always feel free to change the colors as you like.

BACK

Lower Band

With straight needles and E, cast on 56 (68) sts.

Work in K1, p1 Rib for 9 rows.

Charted Farm Scene

Row 1 (RS): With A, k8 (14), place marker (pm), knit AND change yarn color following Row 1 of Chart over next 40 sts, pm, with A, k8 (14) sts.

Rows 2-13: With A, work in St st to first marker, slip marker (sm), work in St st (k on RS, p on WS) AND change yarn color following next row of Chart to next marker, sm, with A, work in St st to end of row.

For thousands of free patterns, visit our website www.LionBrand.com

To order visit our website www.lionbrand.com or call: (800) 258-YARN (9276) any time!

Copyright ©1998-2023 Lion Brand Yarn Company, all rights reserved. No pattern or other material may be reproduced -- mechanically, electronically, or by any other means, including photocopying - without written permission of Lion Brand Yarn Company.

Rows 14-40: With same yarn color as first st of Chart row, work in St st to first marker, sm, work in St st AND change yarn color following next row of Chart to next marker, sm, with same yarn color as last st of Chart row, work in St st to end of row.

Cut all yarn colors, except C, work remainder of piece with C only.

Work even in St st until piece measures about 23 (24) in. (58.5 (61) cm) from beg (including lower band), end with a WS row as the last row you work.

Shape Shoulders

Rows 1-4: Bind off 6 (7) sts, work in St st to end of row – you will have 32 (40) sts in Row 4.

Rows 5 and 6: Bind off 6 (8) sts, work in St st to end of row – 20 (24) sts in Row 6.

Bind off.

Body of Fronts and Sleeves are worked in St st, changing yarn colors to form stripes.

The stripe widths and colors are up to you!

All of the colors in this project work well together, so have fun and place colors however you like.

Take a moment to review your remaining yarn before beginning to determine which colors you have more of.

We suggest making each stripe an odd number of rows – this way, your yarn tails won't all be on one side of the piece.

LEFT FRONT

Lower Band

With straight needles and E, cast on 28 (34) sts.

Work in K1, p1 Rib for 9 rows.

Body

Work even in St st, changing yarn color as desired to form stripes, until piece measures about 15 in. (38 cm) from beg (including lower band), end with a WS row as the last row you work.

Shape Left Neck

Row 1 (RS): Knit to last 3 sts, ssk, k1 – 27 (33) sts.

Row 2: Purl.

Rep Rows 1 and 2 for 9 (11) more times – 18 (22) sts when all decreases have been completed.

Work even in St st until piece measures same as Back to shoulders, end with a WS row as the last row you work.

Shape Left Shoulder

Row 1 (RS): Bind off 6 (7) sts, k to end of row – 12 (15) sts.

Row 2: Purl.

Rows 3 and 4: Rep Rows 1 and 2 – 6 (8) sts when all bind-offs have been completed.

Bind off.

RIGHT FRONT

Lower Band

With straight needles and E, cast on 28 (34) sts.

Work in K1, p1 Rib for 9 rows.

Body

Work even in St st, changing yarn color as desired to form stripes, until piece measures about 15 in. (38 cm) from beg (including lower band), end with a WS row as the last row you work.

Shape Right Neck

Row 1 (RS): K1, k2tog, k to end of row – 27 (33) sts.

Row 2: Purl.

Rep Rows 1 and 2 for 9 (11) more times – 18 (22) sts when all decreases have been completed.

Work even in St st until piece measures same as Back to shoulders, end with a RS row as the last row you work.

Shape Right Shoulder

Row 1 (WS): Bind off 6 (7) sts, p to end of row – 12 (15) sts.

Row 2: Knit.

Rows 3 and 4: Rep Rows 1 and 2 – 6 (8) sts when all bind-offs have been completed.

Bind off.

SLEEVES (make 2)

Lower Band

With straight needles and E, cast on 24 (26) sts.

Work in K1, p1 Rib for 8 rows.

Body

Rows 1-3: Beg with a WS (purl) row, work in St st, changing yarn color as desired to form stripes.

Row 4 (Increase Row - RS): K1, M1, k to last st, M1, k1 – 26 (28) sts.

Next 8 (24) Rows: Rep Rows 1-4 for 2 (6) more times – 30 (40) sts.

Next 5 (1) Row(s): Work in St st.

Next Row: Rep Row 4 (Increase Row) – 32 (42) sts.

Next 18 (6) Rows: Rep last 6 (2) rows 3 more times – 38 (48) sts when all increases have been completed.
Work even in St st until piece measures about 16 1/2 (15 1/2) in. (42 (39.5) cm) from beg.

Shape Top of Sleeve

Rows 1-6: Bind off 5 (7) sts, work in St st to end of row – 8 (6) sts.

Bind off.

FINISHING

Sew shoulder seams, sewing 18 (22) sts together for each shoulder and leaving 20 (24) sts unsewn at center for back neck.

Place markers on side edges of Back and Fronts about 8 (10) in. (20.5 (25.5) cm) from shoulder seams.

Sew Sleeves between markers.

Front and Neck Band

From RS, with circular needle and C, beg at lower right front corner, pick up and k61 (63) sts evenly spaced along right front edge, 20 (24) sts along back neck, and 61 (63) sts along left front edge – 142 (150) sts.

Work in K1, p1 Rib for 5 rows.

Bind off.

Sew side and Sleeve seams.

Weave in ends.

ABBREVIATIONS

beg = begin(ning)(s)

k = knit

k2tog = knit 2 stitches together

p = purl

rep = repeat

RS = right side

st(s) = stitch(es)

St st = Stockinette stitch

WS = wrong side



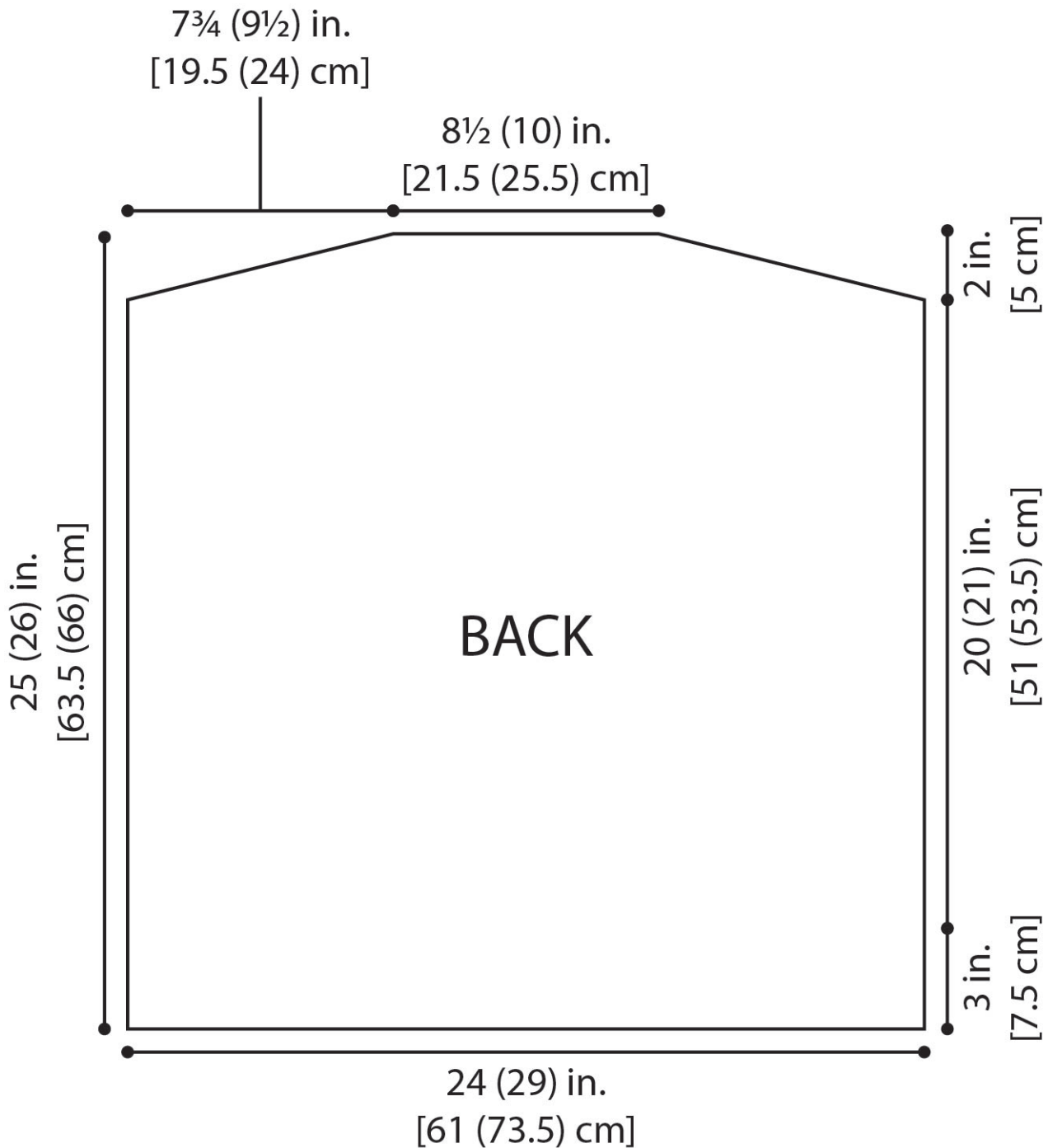
Every effort has been made to produce accurate and complete instructions. We cannot be responsible for variance of individual knitters or crocheters, human error, or typographical mistakes.

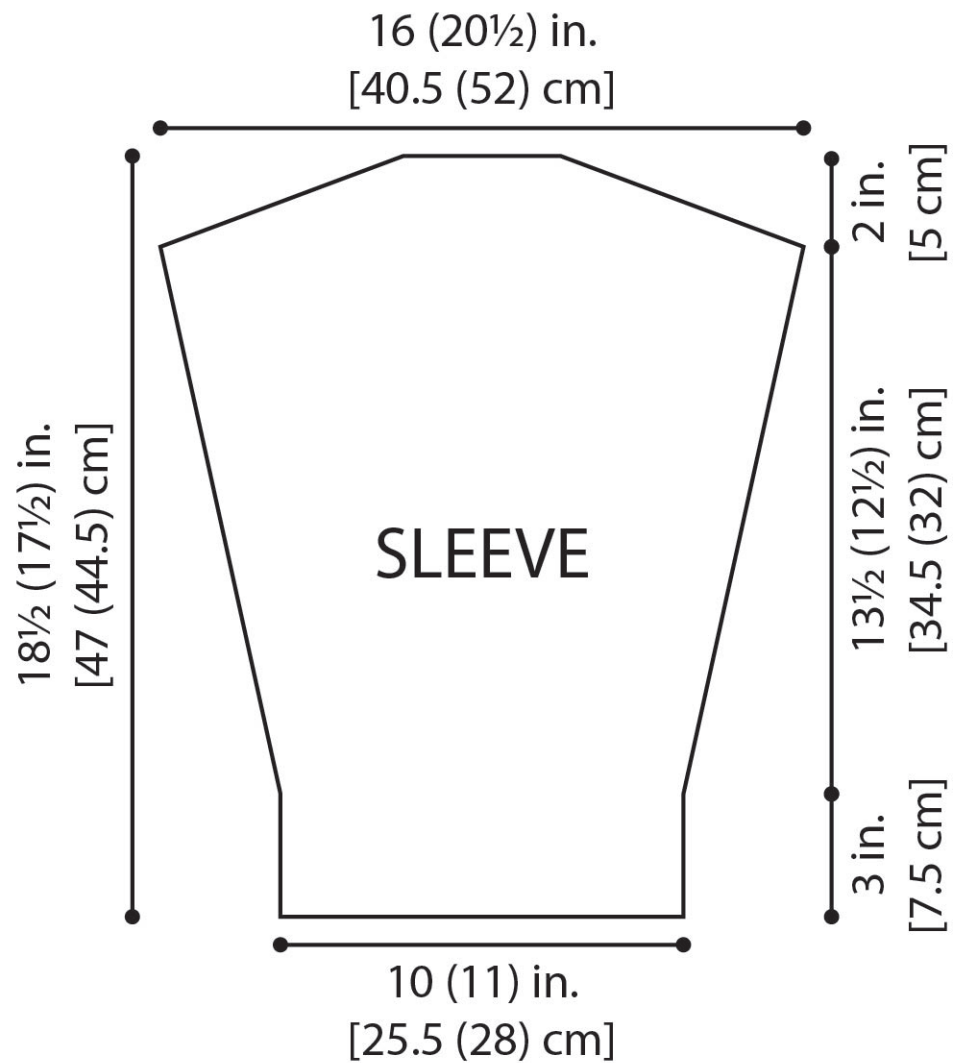
©2023 Lion Brand Yarn Company, all rights reserved.

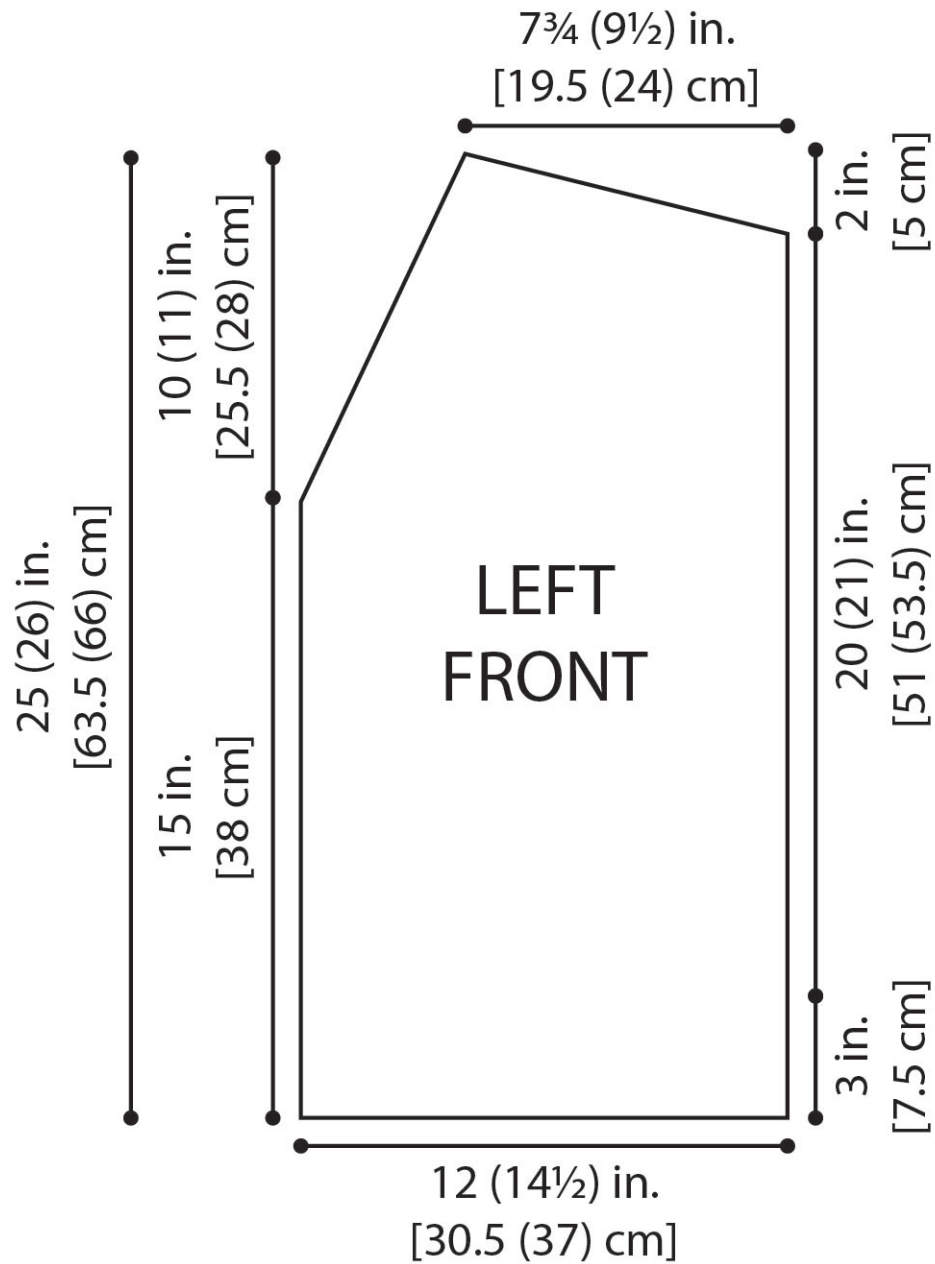
For thousands of free patterns, visit our website www.LionBrand.com

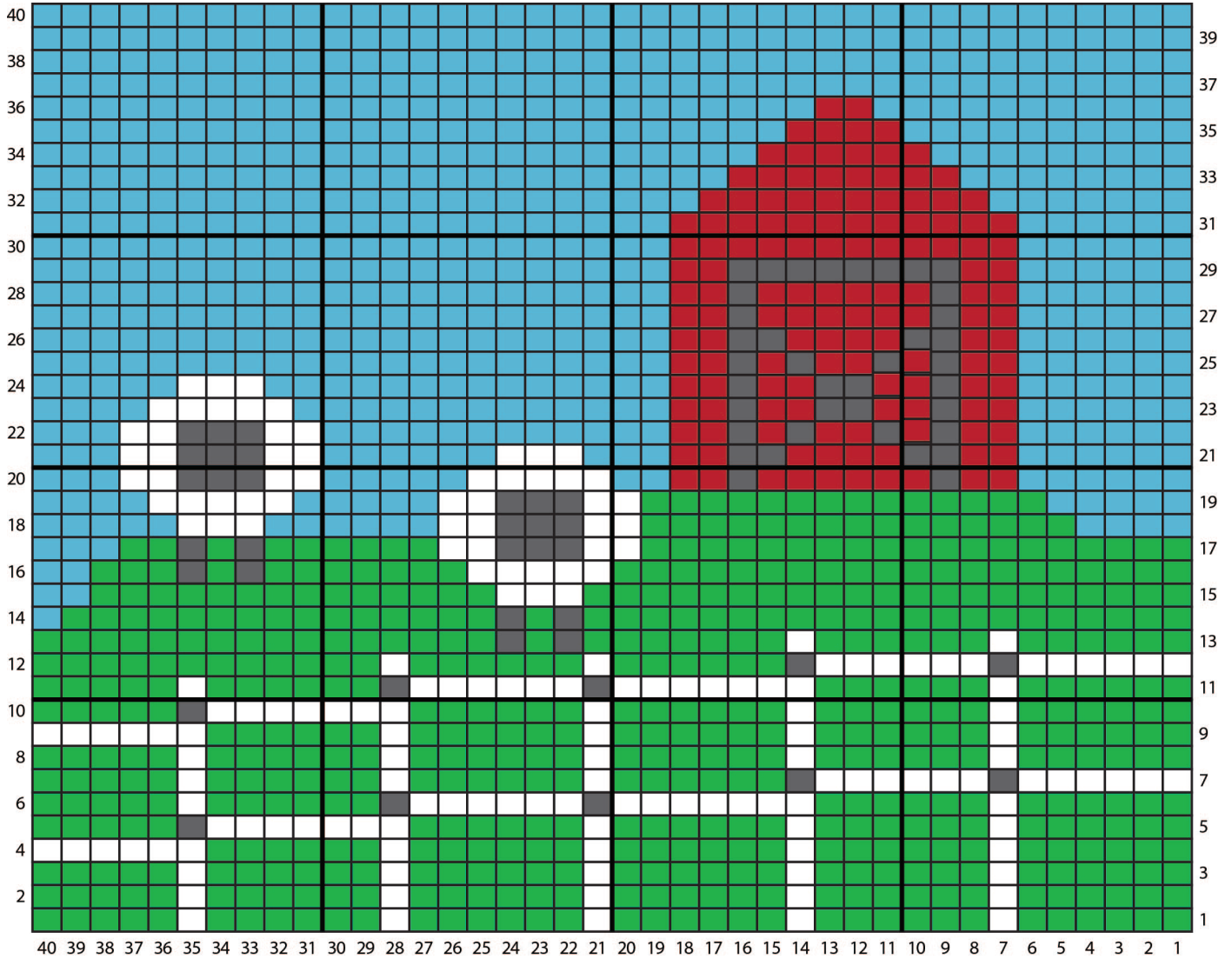
To order visit our website www.lionbrand.com or call: (800) 258-YARN (9276) any time!

Copyright ©1998-2023 Lion Brand Yarn Company, all rights reserved. No pattern or other material may be reproduced -- mechanically, electronically, or by any other means, including photocopying - without written permission of Lion Brand Yarn Company.









COLOR KEY	
■	#130 Green Bay (A)
■	#100 New York White (B)
■	#237 Sleepy Hollow Spirit (C)
■	#114 Tampa Spice (D)
■	#153 South Dakota Black (E)