



Submittal Data Information Plus Two Multi-Purpose Valve

301-235

SUPERSEDES: July 15, 2017

EFFECTIVE: March 22, 2018

JOB _____ ENGINEER _____ CONTRACTOR _____ REP. _____

ITEM	QUANTITY	MODEL NO.	SIZE

DIMENSIONS

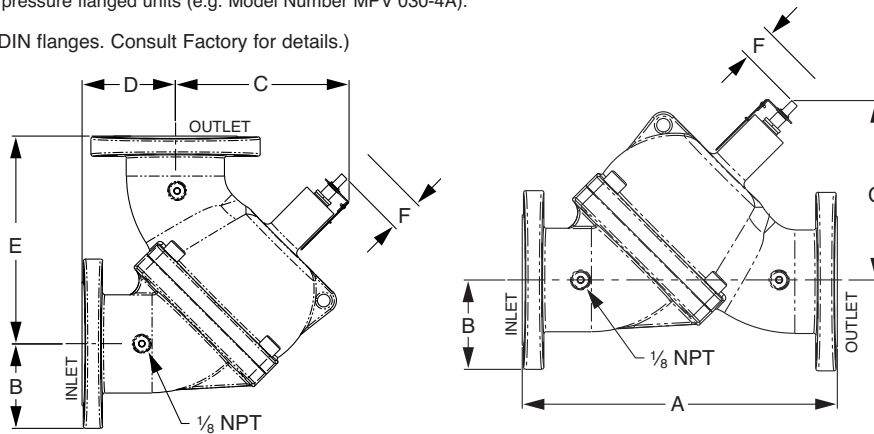
Model Number	Size	Connection	A	B (Class 125*)	B (Class 250*)	C	D	E	F	C _v	Weight (125#)	Weight (250#)
MPV 015-4	1½ (38.1) NPT	Threaded	8.00 (203)	1.44 (037)	1.44 (037)	4.70 (119)	2.39 (061)	5.64 (143)	1.3 (33.0)	69	12 (5.5)	12 (5.5)
MPV 020-4	2 (50.8) NPT	Threaded	8.00 (203)	1.44 (037)	1.44 (037)	4.70 (119)	2.39 (061)	5.64 (143)	1.3 (33.0)	77	12 (5.5)	12 (5.5)
MPV 025-4	2½ (63.5) NPT	Threaded	10.63 (270)	1.93 (049)	1.93 (049)	4.97 (126)	3.50 (089)	7.30 (185)	1.6 (40.6)	122	32 (15)	32 (15)
MPV 030-4*	3 (76.2)	Flanged	11.75 (298)	3.75 (095)	4.13 (105)	6.15 (156)	3.90 (099)	7.85 (199)	1.8 (45.7)	209	38 (17)	46 (21)
MPV 040-4*	4 (101.6)	Flanged	13.75 (349)	4.50 (114)	4.50 (114)	8.51 (216)	4.18 (106)	9.63 (245)	2.1 (53.3)	357	67 (30)	84 (38)
MPV 050-4*	5 (127.0)	Flanged	17.63 (448)	5.00 (127)	5.50 (140)	11.26 (286)	5.25 (133)	12.28 (312)	2.4 (61.0)	459	105 (48)	126 (57)
MPV 060-4*	6 (152.4)	Flanged	20.35 (517)	5.50 (140)	6.25 (159)	11.28 (287)	6.07 (154)	14.23 (361)	2.7 (68.6)	701	134 (61)	176 (80)
MPV 080-4*	8 (203.2)	Flanged	25.88 (657)	6.75 (171)	7.50 (191)	13.58 (345)	6.75 (171)	19.13 (486)	3.9 (99.1)	1200	293 (133)	341 (155)
MPV 100-4*	10 (254.0)	Flanged	30.00 (762)	8.00 (203)	8.75 (222)	15.82 (402)	8.81 (224)	21.20 (538)	4.4 (111.8)	1826	466 (212)	536 (243)
MPV 120-4*	12 (304.8)	Flanged	36.70 (932)	9.50 (241)	10.25 (260)	17.54 (446)	9.98 (253)	26.64 (677)	4.9 (124.5)	2430	724 (329)	811 (368)
MPV 140-4*	14 (355.6)	Flanged	41.56 (1056)	10.50 (267)	11.50 (292)	22.80 (579)	12.09 (307)	29.47 (749)	5.4 (137.2)	3147	1105 (502)	1182 (537)

NOTE: Dimensions are in inches. Metric dimensions are in millimeters and are in parentheses (). Weights are in lb (kg).

'F' is the distance required to replace packing under pressure. 'A,C,D,E,F' applies to Class 250* flanged units also.

* Append 'A' for Class 250* working pressure flanged units (e.g. Model Number MPV 030-4A).

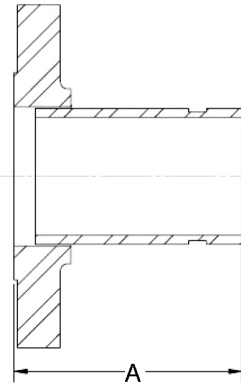
(All sizes available with optional DIN flanges. Consult Factory for details.)



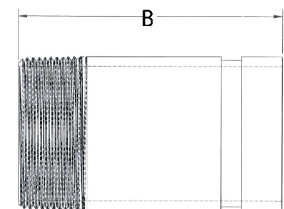
GROOVED ADAPTER

Class 125 Assembly Part No.	Class 250 Assembly Part No.	Size	'A'
FTG020-5	FTG020-5A	2"	4"
FTG025-5	FTG025-5A	2-1/2"	
FTG030-5	FTG030-5A	3"	
FTG040-5	FTG040-5A	4"	6"
FTG050-5	FTG050-5A	5"	
FTG060-5	FTG060-5A	6"	
FTG080-5	FTG080-5A	8"	8"
FTG100-5	FTG100-5A	10"	
FTG120-5	FTG120-5A	12"	
FTG140-5	FTG140-5A	14"	

THREADED - GROOVED



Class 125 + 250 Assembly Part No.	Size	'B'
TTG015-5	1-1/2"	4"
TTG020-5	2"	
TTG025-5	2-1/2"	



FLANGED - GROOVED

Note: Adapters required to convert flanged & threaded MPV to grooved.

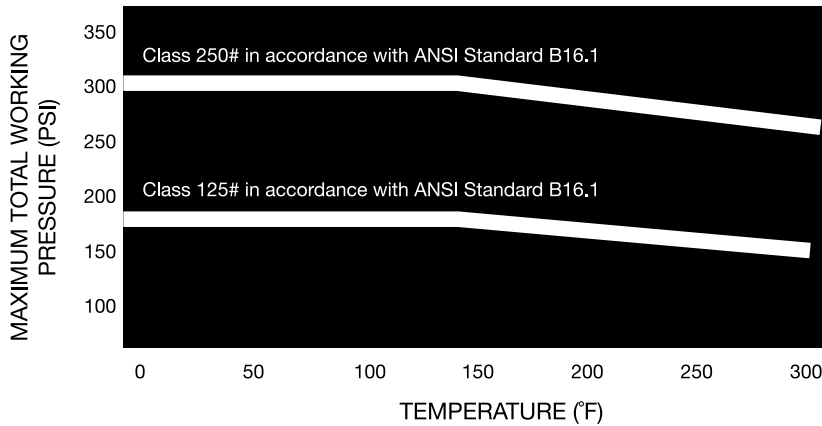
FEATURES

- Horizontal or Vertical Installation
- Field Convertible to a Right Angle Valve
- Stem Seal Packing (replaceable under pressure)
- Memory Indicator, Pointer and Scale
- Shrader Valve Metering Connections
- "O" Ring Sealed Valve Body
- Replaceable "Soft Seal"
- Low Pressure Drop (equal to or better than any comparable valve on the market today)
- Five (5) Valves in One:
 - Shut Off Valve
 - Flow Control Valve (globe style)
 - Non Slam Check Valve
 - Flow Metering Valve
 - Straight Pattern Valve Convertible to a Right Angle Pattern Valve
- Available with Class 125* flanges or Class 250* flanges. Consult pressure/temperature chart on page 2 for operating limitations. (Flanged units are raised faced design.)

MATERIALS OF CONSTRUCTION

- Body - Ductile Iron
- Spring - Stainless Steel (302)
- Gland - Bronze
- Stem Packing - Teflon Impregnated Aramid Fiber (asbestos free)
- Stem - Bronze/Stainless Steel (416)
- Seat - EPDM
- Seat Disc - Stainless Steel (304)
- Bronze for MPV140-4 only
- Body O-Ring - EPDM
- Adapter - Steel

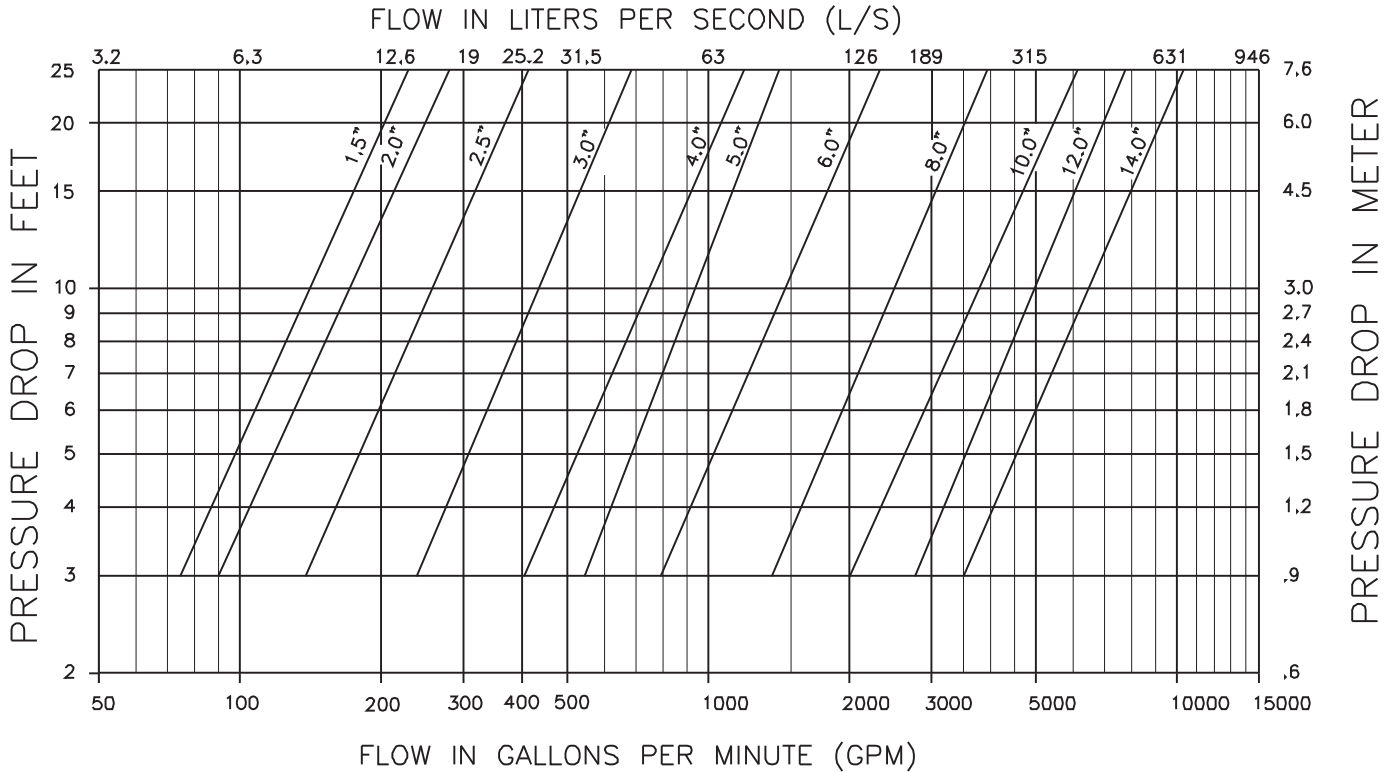
PRESSURE TEMPERATURE RATINGS



OPERATING SPECIFICATIONS

	Standard	Optional
Flange	Class 125*	Class 250*
Pressure	175 PSIG* (1210 KPA)	300 PSIG* (2070 KPA)
Temperature	250°F (120°C**)	250°F (120°C**)

*Per Pressure Temperature Ratings chart to left.



Taco, Inc., 1160 Cranston Street, Cranston, RI 02920 | Tel: (401) 942-8000 | FAX: (401) 942-2360
Taco (Canada), Ltd., 8450 Lawson Road, Suite #3, Milton, Ontario L9T 0J8 | Tel: (905) 564-9422 | FAX: (905) 564-9436
 Visit our web site: www.TacoComfort.com | Printed in USA | ©2017 Taco, Inc.

