

SUPERSEDES: March 10, 2016

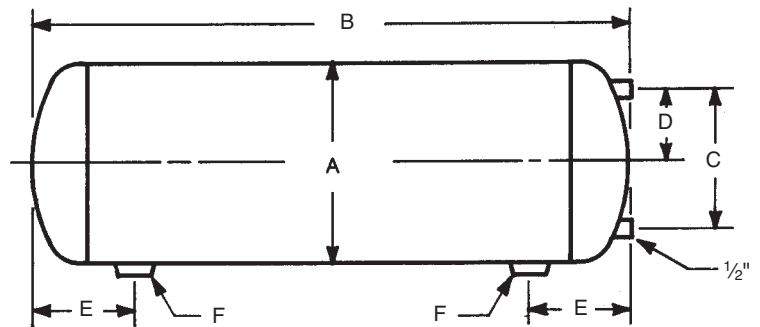
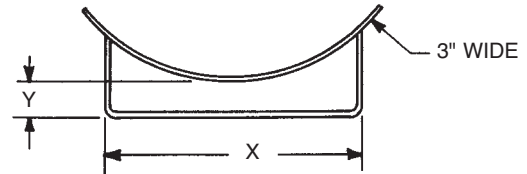
EFFECTIVE: May 4, 2017

Job: _____

ITEM	LOCATION	MODEL	QUANTITY	GALLONS

**(OPTIONAL) SADDLES
(For Horizontal Installation)**

Tank Diameter	x	y	Weight in Lbs. Per Pair
14	8	2	8
16	8	2 ¹ / ₈	8
20	14 ⁵ / ₈	1 ¹ / ₁₆	14
24	14 ⁵ / ₈	1 ³ / ₄	13
30	14	2 ¹ / ₂	12 ¹ / ₂
36	15 ¹ / ₂	2 ⁷ / ₁₆	13 ¹ / ₂



SIZES & DIMENSIONS

All dimensions shown are subject to change and should not be used for pre-piping. Contact your local Taco representative should certified dimensional drawings be required.

Model No.	CAPACITY (GAL.)	A	B	C	D	E	F	Approx. Weight (Lbs.) Painted
		INCH	INCH	INCH	INCH	INCH	INCH	
PS015-125	15	14	27	10 ⁵ / ₈	5 ⁵ / ₁₆	7	1 ¹ / ₂	49
PS030-125	30	14	46 ¹ / ₂	10 ⁵ / ₈	5 ⁵ / ₁₆	7	1 ¹ / ₂	88
PS040-125	40	14	65 ⁷ / ₈	10 ⁵ / ₈	5 ⁵ / ₁₆	7	1 ¹ / ₂	114
PS060-125	60	16	75 ¹ / ₂	12	6	7 ¹ / ₂	1 ¹ / ₂	118
PS080-125	80	20	66 ⁷ / ₈	15 ¹ / ₄	7 ⁵ / ₈	9	2	160
PS100-125	100	20	78 ³ / ₄	15 ¹ / ₄	7 ⁵ / ₈	9	2	196
PS120-125	120	24	67 ¹ / ₈	18 ³ / ₄	9 ³ / ₈	10	2	213
PS135-125	135	24	75 ⁷ / ₈	18 ³ / ₄	9 ³ / ₈	10	2	235
PS180-125	180	30	68 ¹ / ₄	22	11	12	2	363
PS220-125	220	30	81 ¹ / ₄	22	11	12	2	433
PS240-125	240	30	88 ¹ / ₄	22	11	12	2	466
PS300-125	300	36	76 ¹ / ₂	28	14	13 ³ / ₈	2	676
PS400-125	400	36	99 ³ / ₄	28	14	13 ³ / ₈	2	858
PS515-125	515	36	126 ⁵ / ₈	28	14	13 ³ / ₈	2	1069

SPECIFICATIONS

- Manufactured in Accordance with ASME Section VIII
- Maximum Working Pressure - 125 PSIG (optional 150 PSIG, -150 in Model No.)
- Maximum Operating Temperature – 375°F

COMMENTS: _____

