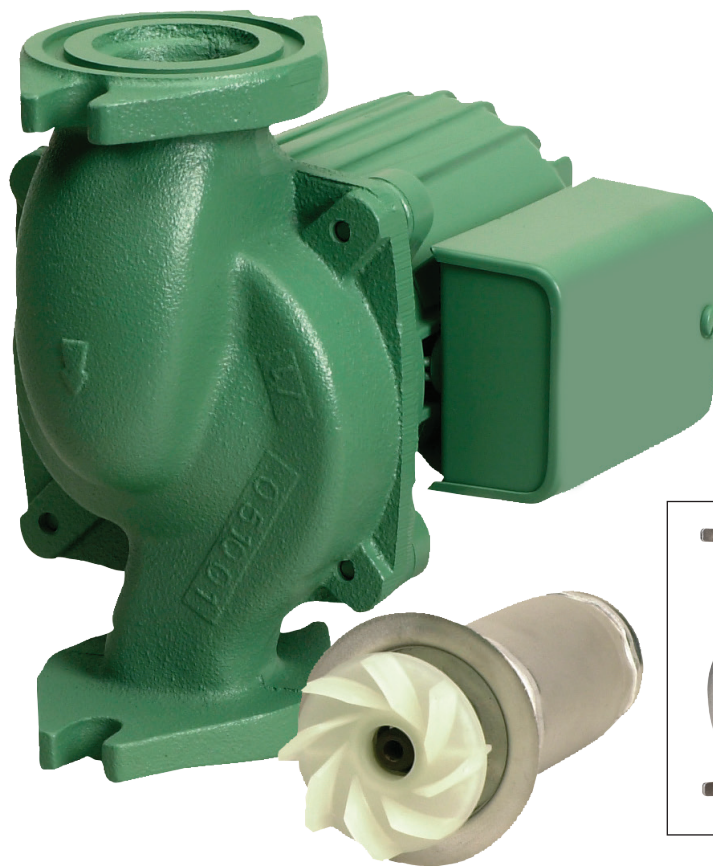


Model 0010 Cartridge Circulator

The High Velocity series Taco 0010 Cartridge circulator is designed for quiet, efficient operation in residential or light commercial applications for hydronic heating, chilled water cooling and potable hot water systems. Its unique field-serviceable cartridge contains all moving parts. Replacing the cartridge rebuilds the circulator. With no mechanical seal, the self-lubricating, maintenance free design provides unmatched reliability. Compact and lightweight, with excellent performance characteristics, the 0010 is ideal for installations where space is a premium. Available in Cast Iron or Stainless Steel construction.



Low-Lead
Compliant



Submittal Data Information Model 0010 Cartridge Circulator

Submittal Data # 101-033
Supersedes: 01/12/15

Effective: 02/17/16

Features

- Standard high capacity output - Compact design
- Quiet, efficient operation
- Direct drive - Low power consumption
- Unique Replaceable Cartridge design (Field serviceable)
- Self Lubricating
- No mechanical seal
- Unmatched reliability - Maintenance free
- Universal flange to flange dimensions
- Cast Iron or Stainless Steel construction

Materials of Construction

Casing (Volute): Cast Iron or Stainless Steel
 Stator Housing: Aluminum
 Cartridge: Stainless Steel
 Impeller: Non-metallic
 Shaft: Ceramic
 Bearings: Carbon
 O-Ring & Gaskets: EPDM

Model Nomenclature

F – Cast Iron, Flanged
 SF – Stainless Steel, Flanged

Performance Data

Max. Flow: 32 GPM
 Max. Head: 10 Feet
 Min. Fluid Temperature: 40°F (4°C)
 Max. Fluid Temperature: 230°F (110°C)
 Max. Working Pressure: 150 psi
 Connection Sizes: 3/4", 1", 1-1/4", 1-1/2" Flanged

Certifications & Listings

UL US LISTED FOR INDOOR USE ONLY

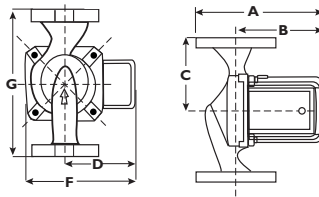
NSF Low-Lead Compliant
Certified to NSF/ANSI 372

Application

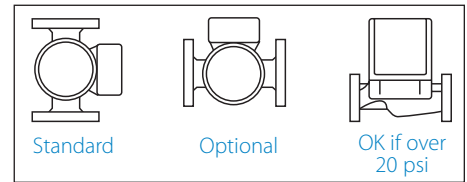
The Taco 0010 is designed for a wide range of large residential or light commercial water circulating applications. Typical uses include hydronic heating, radiant heating, primary-secondary loops, indirect water heaters, chilled water cooling, and potable hot water systems. The Stainless Steel 0010 is designed for all open-loop, fresh water systems. The unique replaceable cartridge contains all of the moving parts and allows for easy service, instead of replacing the entire circulator. Compact, direct-drive, low power consumption design makes it ideal for high-efficiency jobs.

Pump Dimensions & Weights

Models	Casing	A		B		C		D		F		G		Ship Wt.	
		in.	mm	in.	mm	in.	mm	in.	mm	in.	mm	in.	mm	lbs.	Kg
0010-F3	Cast Iron	7-1/4	184	5-5/16	135	3-3/16	81	3-15/16	84	5-3/8	137	6-3/8	162	10	4.5
0010-SF3	St. Steel	7-1/4	184	5-5/16	135	3-3/16	81	3-15/16	84	5-1/8	137	6-3/8	162	9	4



Mounting Positions



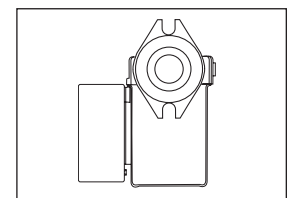
Electrical Data

Model	Volts	Hz	Ph	Amps	RPM	HP
0010-F3	115	60	1	1.10	3250	1/8
0010-SF3	115	60	1	1.20	3250	1/8

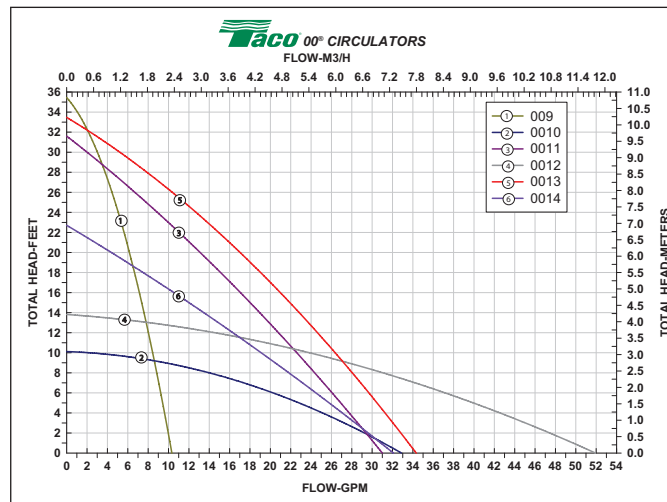
Motor Type: Permanent Split Capacitor Impedance Protected

Motor Options: 220/50/1, 220/60/1, 230/60/1, 100/110/50/60/1

Flange Orientation



Performance Field - 60Hz



Taco Inc., 1160 Cranston Street, Cranston, RI 02920 / (401) 942-8000 / Fax (401) 942-2360
 Taco (Canada) Ltd., 8450 Lawson Road, Unit #3, Milton, Ontario L9T 0J8 / (905) 564-9422 / Fax (905) 564-9436
www.TacoComfort.com