

LION BRAND® YARN | *kits*

Duo Granny Bandana

Designed by Two of Wands

Pattern No. M23115.TWC

Yarn: Lion Brand® Color Theory®

Level 2 Easy



DUO GRANNY BANDANA

●●○○



TWO
OF
WANDS



MATERIALS

- 1 skein each Lion Brand Color Theory in Dijon (619-170AE), Himalayan Salt (619-184X), Peacock (619-148AD), Tourmaline (619-178S), and Canyon (619-132AG) (worsted weight 4; 246yds/225m per skein)
- Size US G/6 (4mm) crochet hook
- Tapestry needle

GAUGE

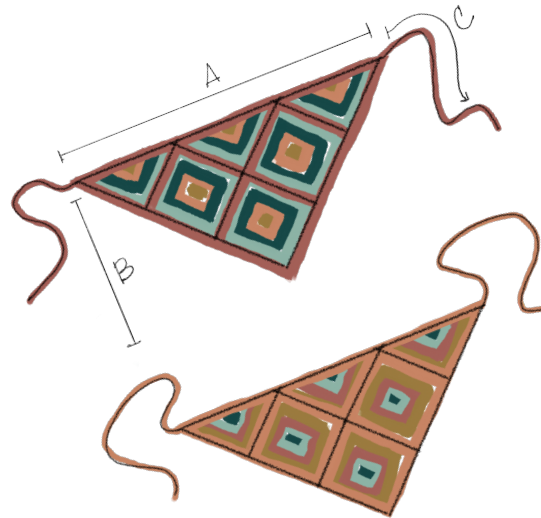
1 granny square motif = 4"/10cm

FINISHED DIMENSIONS

A Width: 17"/43cm

B Depth to point: 9"/23cm

C Straps: 18"/46cm



ABBREVIATIONS

All Two of Wands patterns are written in standard US terms.

CC	Contrast color
Ch	Chain
Ch-sp	Chain space
Dc	Double crochet
Hdc	Half double crochet
MC	Main color
Rep	Repeat
Rnd(s)	Round(s)
RS	Right side
Sc	Single crochet
Sl st	Slip stitch
St(s)	Stitch(es)
Tch	Turning chain
WS	Wrong side

NOTES

Bandanas are made up of three squares and three triangles worked individually and seamed together. Edging and ties are worked after construction. Squares are worked in joined, turned rounds and triangles are worked in turned rows. To change colors in squares, work the final slip stitch of the previous round with the new color. To change colors in triangles, work the final yarn over of the last dc in the previous row with the new color. Assign each color A, B, C, D, and E and follow chart or instructions as written. Change the order of the colors for a different look.

SQUARES (MAKE 3)

With Color A, begin with a magic ring.

Rnd 1 (RS) Working into the ring, ch 3 (counts as a dc here and throughout), dc 2, (ch 2, dc 3) 3 times, ch 2, sl st to top of beginning ch 3 to join. (1 3-dc cluster per side, 4 3-dc clusters total)

Change to color B.

Rnd 2 (WS) Turn, sl st in corner ch-2 sp, ch 3, dc 2 in corner ch-2 sp, *ch 1, (dc 3, ch 2, dc 3) in next corner ch-2 sp, rep from * two more times, ch 1, dc 3 in last corner ch-2 sp, ch 2, sl st to top of beginning ch 3 to join. (2 3-dc clusters per side, 8 3-dc clusters total)

Change to color C.

Rnd 3 Turn, sl st in corner ch-2 sp, ch 3, dc 2 in corner ch-2 sp, *ch 1, dc 3 in next ch-1 sp, ch 1, (dc 3, ch 2, dc 3) in next corner ch-2 sp, rep from * two more times, ch 1, dc 3 in next ch-1 sp, ch 1, dc 3 in last corner ch-2 sp, ch 2, sl st to top of beginning ch 3 to join. (3 3-dc clusters per side, 12 3-dc clusters total)

Change to color D.

Rnd 4 Turn, sl st in corner ch-2 sp, ch 3, dc 2 in corner ch-2 sp, *ch 1, (dc 3 in next ch-1 sp, ch 1) to next corner ch-2 sp, (dc 3, ch 2, dc 3) in corner ch-2 sp, rep from * two more times, ch 1, (dc 3 in next ch-1 sp, ch 1) to last corner ch-2 sp, dc 3 in corner ch-2 sp, ch 2, sl st to top of beginning ch 3 to join. (4 3-dc clusters per side, 16 3-dc clusters total)

Change to color E.

Rnd 5 Turn, sl st in corner ch-2 sp, ch 1, sc 2 in corner ch-2 sp, *sc in each st and ch sp to next corner ch-2 sp, sc 4 in corner ch-2 sp, rep from * two more times, sc in each st and ch sp

to last corner ch-2 sp, sc 2 in corner ch-2 sp, sl st to top of 1st sc to join. (19 sc per side; 76 sc total)

Fasten off. Secure and weave in all ends.

TRIANGLES (MAKE 3)

With Color A, begin with a magic ring.

Rnd 1 (RS) Working into the ring, ch 4 (counts as a dc + ch-1 sp here and throughout), dc 3, ch 2, dc 3, ch 1, dc 1, turn. (2 3-dc clusters + 2 ch-1 sp + 2 dc + 1 ch-2 sp)

Change to color B.

Rnd 2 (WS) Turn, ch 4, dc 3 in ch-1 sp, ch 1, (dc 3, ch 2, dc 3) in center ch-2 sp, ch 1, dc 3 in ch-1 sp, ch 1, dc in 3rd ch of tch. (4 3-dc clusters + 4 ch-1 sp + 2 dc + 1 ch-2 sp)

Change to color C.

Rnd 3 Turn, ch 4, (dc 3 in next ch-1 sp, ch 1) two times, (dc 3, ch 2, dc 3) in center ch-2 sp, (ch 1, dc 3 in next ch-1 sp) two times, ch 1, dc in 3rd ch of tch. (6 3-dc clusters + 6 ch-1 sp + 2 dc + 1 ch-2 sp)

Change to color D.

Rnd 4 Turn, ch 4, (dc 3 in next ch-1 sp, ch 1) three times, (dc 3, ch 2, dc 3) in center ch-2 sp, (ch 1, dc 3 in next ch-1 sp) three times, ch 1, dc in 3rd ch of tch. (8 3-dc clusters + 8 ch-1 sp + 2 dc + 1 ch-2 sp)

Change to color E.

Rnd 5 Turn, ch 1 and starting in 1st dc, sc in each dc and ch-1 sp to center ch-2 sp, sc 4 in center ch-2 sp, sc in each dc and ch-1 sp to end of row, with last sc going in 3rd ch of tch. (38 sc)

Fasten off. Secure and weave in all ends.

CONSTRUCTION

Block all squares and triangles to relax the stitches and ensure they are a uniform shape. With RS facing up, arrange pieces according to diagram and seam together with a whip stitch or seaming technique of choice using color E.

EDGING

With RS facing up, join color E at top left corner of bandana. Ch 1 and sc in each st to last st along this side edge before bottom point, sc 2 in each of next 2 sts (these are the 2 sts on either side of the bottom point), sc in each st along next side edge.

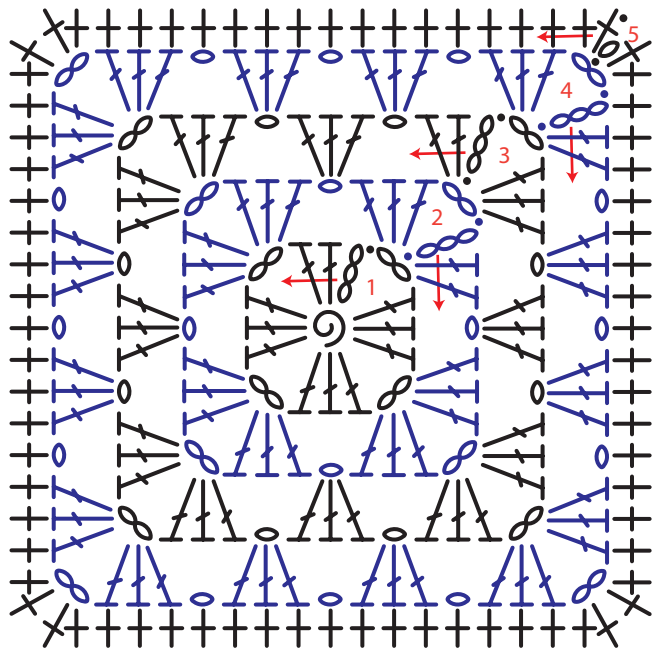
Fasten off.

TIES AND TOP EDGING






With WS facing, ch 68, then sc evenly across top edge of bandana, then ch 69. Turn, and starting in 2nd ch from hook, hdc across ch, sc in each st along top edge of bandana, hdc across next ch.

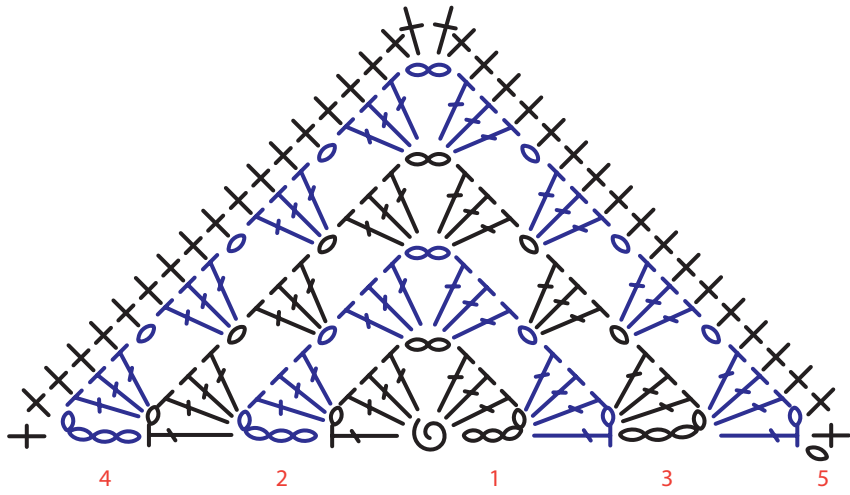
Fasten off. Secure and weave in all ends.

CHARTS



Key

-  magic ring
-  sl st
-  ch
-  sc
-  dc





TWOOFWANDS.COM • @TWOOFWANDS

Share your projects made using Two of Wands patterns on Instagram with the hashtag #crewofwands to get featured on the @twoofwands page and be in the running for monthly pattern giveaways!

For pattern support, please join the Crew of Wands Facebook group where those who use Two of Wands patterns can connect and provide help to each other.

The pattern and photographs of this design are the property of Two of Wands and are for personal, non-commercial use only. These patterns files are protected by US copyright, and you may not distribute or sell them electronically or physically. Small batch sales of finished pieces made from this pattern are permitted, but seller must use their own photographs and credit must be given to Two of Wands as the designer.