



Free Knitting Pattern

Patchwork Jacket



Pattern #-

M22203 JFBB

Yarn-

Lion Brand® Jiffy Bonus Bundle

SKILL LEVEL – INTERMEDIATE

SIZE

One Size

Finished Bust About 42 in. (106.5 cm)

Finished Length About 21 in. (53.5 cm)

MATERIALS

- LION BRAND® JIFFY BONUS BUNDLE (Art. #451)
 - #108 Seafoam 1 ball (A)
 - #102 Clay 1 ball (B)
 - #131 Forest 1 ball (C)
 - #151 Slate 1 ball (D)
- LION BRAND® large-eyed blunt needle



ADDITIONAL MATERIALS

Circular knitting needle size 10 (6 mm), 36 in. (91.5 cm) long or longer

GAUGE

17 sts + 26 rows = about 5 in. (12.5 cm) over Seed st.

1 Square = about 5 x 5 in. (12 cm), with 7 in. (18 cm) diagonal.

1 Triangle = about 7 in. (18 cm) along longest edge and 5 in. (12.5 cm) along each short edge.

BE SURE TO CHECK GAUGE.

STITCH EXPLANATIONS

M1 (make 1) An increase worked by lifting the horizontal strand lying between needles and placing it onto the left needle. Knit this new stitch through the back loop – 1 st increased.

skp (slip, knit, pass over) Slip 1 as if to knit, knit 1, pass slip stitch over knit stitch – 1 st decreased.

sk2p (slip 1, k2tog, pass over) Slip 1 as if to knit, knit 2 together, pass slipped stitch over – 2 sts decreased.

spp (slip, purl, pass over) Slip the next st to the right hand needle without knitting it, p the next st, pass the slipped st over the st you just purled and off the needle – 1 st decreased.

PATTERN STITCHES

Seed St (worked over an even number of sts)

Row 1: *K1, p1; rep from * to end of row.

Row 2: P the knit sts, and k the purl sts.

Rep Row 2 for Seed st.

Seed St (worked over an odd number of sts)

Row 1: K1, *p1, k1; rep from * to end of row.

Row 2: K the purl sts and p the knit sts.

Rep Row 2 for Seed st.

NOTES

1. Jacket is made from 83 pieces: 39 Squares, 40 Triangles, 2 Neck Pieces, and 2 Underarm pieces. Body is made from 25 Squares, 20 Triangles, and 2 Neck pieces. Each Sleeve is made from 7 Squares, 10 Triangles, and one Underarm piece. Pieces are sewn together following a Diagram, to make the Jacket.
2. Triangles are worked in Seed st. Squares are worked in three different stitch patterns: Horizontal Dash, Triangle Stitch, and Seed st.
3. Some pieces are worked using a single yarn color. Other pieces are worked using 2 different yarn colors, alternating 2 rows of one color with 2 rows of the other color.
4. All pieces are worked back and forth in rows.
5. Edging is worked along lower, front, neck and wrist edges.
6. The circular needle is needed to accommodate the edging sts. If preferred, the 83 pieces can be worked on straight needles.

Note:

The following corrections have been incorporated into the pattern below. We are highlighting the corrections separately here so that if you have printed out an earlier version of the pattern you'll know what was changed.

CORRECTIONS (applied September 26th, 2023)

STITCH EXPLANATIONS

...

spp (slip, purl, pass over) Slip the next st to the right hand needle without knitting it, p the next st, pass the slipped st over the st you just purled and off the needle – 1 st decreased.

RIGHT-SLANTING TRIANGLES (make 32 ...

...

Rep Rows 1-4 until only 3 sts rem, end with a Row 4 **3** as the last row you work.

LEFT-SLANTING TRIANGLES (make 6 ...

...

Rep Rows 1-4 until only 3 sts rem, end with a Row 4 **3** as the last row you work.

SMALL TRIANGLE (make 2 – 1 each with B only and D only)

...

Row 1 (RS): K1, skp, work in Seed st to end of row – you will have 16 sts in this row.
Rep Row 1 until only 3 sts rem.

HORIZONTAL DASH SQUARE (make 15 – 2 with A only; 5 with C only; 4 each with ...

Row 6: K1, (p3, k3) twice, p3, k1.

TRIANGLE STITCH SQUARES (make 12 – 5 with A only; 1 with C only; 3 each with B only and D only)

...

Row 2: K1, (k1, p4 †) 3 times, k1.

...

Rows 7-24: Rep Rows 1-6 for 3 more times.

SEED STITCH SQUARES (make 12 – 2 with B only; 5-4 with C only; 1 each with C/A and D and /A; 2 each with C/B and A/B)

Cast on 17 sts.

Work in Seed st for 26 rows.

Bind off.

LEFT NECK PIECE

...

Rows 3 5-24: Rep Rows 1-4 for 5 more times.

Rows 25 and 26: Rep Rows 1 and 2.

Continue to change yarn color every other row, working 2 rows of A and 2 rows of C, to end of piece.
Work even in Seed st for 26 rows.

Rows 27-52: Work even in Seed st pattern.

Bind off.

RIGHT NECK PIECE

...

Row 1 (RS): K1, skp, work in Seed st to last st, M1, k1.

...

Row 3: K1, spp, work in Seed st to last st, M1, k1.

...

Rows 3 5-24: Rep Rows 1-4 for 5 more times.

Rows 25 and 26: Rep Rows 1 and 2.

Work even in Seed st for 26 rows.

Rows 27-52: Work even in Seed st pattern.

Bind off.

ABBREVIATIONS

...

p2tog = purl 2 stitches together

...

tbl = through back loop

RIGHT-SLANTING TRIANGLES

(make 32 – 1 each with B only and A only; 3 with C only; 7 with D only; 2 each with C/B, C/D, and D/B; 3 each with D/A and D/C; 4 each with A/C and B/D)

Note: When 2 yarn colors are listed (e.g. C/B), beg with first color listed and alternate 2 rows of each yarn color.

Cast on 17 sts.

Work Row 1 of Seed st pattern.

Row 1 (RS): Work in Seed st to last 3 sts, k2tog, k1 – you will have 16 sts in this row.

Row 2: Work in Seed st to end of row.

Row 3: Work in seed st to last 3 sts, k2tog, k1 – 15 sts.

Row 4: Work in Seed st to end of row.

Rep Rows 1-4 until only 3 sts rem, end with a Row 3 as the last row you work.

Next Row (WS): Sk2p – 1 st.

Fasten off last st.

LEFT-SLANTING TRIANGLES

(make 6 – 1 with B only; 2 with D only; 1 each with C/B, D/A, and D/C)

Cast on 17 sts.

Work Row 1 of Seed st pattern.

Row 1 (RS): K1, skp, work in Seed st to end of row – you will have 16 sts in this row.

Row 2: Work in Seed st to end of row.

Row 3: K1, skp, work in Seed st to end of row – 15 sts.

Row 4: Work in Seed st to end of row.

Rep Rows 1-4 until only 3 sts rem, end with a Row 4 as the last row you work.

Next Row (WS): Sk2p – 1 st.

Fasten off last st.

SMALL TRIANGLES

(make 2 – 1 with B only and 1 with D only)

Cast on 17 sts.

Work Row 1 of Seed st pattern.

Row 1 (RS): K1, skp, work in Seed st to end of row – you will have 16 sts in this row.

Rep Row 1 until only 3 sts rem.

Next Row (WS): Sk2p – 1 st.

Fasten off last st.

HORIZONTAL DASH SQUARES

(make 15 – 2 with A only; 5 with C only; 4 with B only and 4 with D only)

Cast on 17 sts.

Purl 1 row.

Row 1 (RS): Knit.

Row 2: K1, (k3, p3) twice, k4.

Rows 3-5: Beginning with a RS (knit) row, work in St st (k on RS, p on WS) for 3 rows.

Row 6: K1, (p3, k3) twice, p3, k1.

Row 7 and 8: Work in St st for 2 rows.

Rows 9-24: Rep Rows 1-8 for 2 more times.

Knit 1 row.

Bind off.

TRIANGLE STITCH SQUARES

(make 12 – 5 with A only; 1 with C only; 3 each with B only and D only)

Cast on 17 sts.

Knit 1 row.

Row 1 (RS): Knit.

Row 2: K1, (k1, p4) 3 times, k1.

Rows 3 and 4: k1, (k3, p2) 3 times, k1.

Row 5: k1, (k1, p4) 3 times, k1.

Row 6: Knit.

Rows 7-24: Rep Rows 1-6 for 3 more times.

Knit 1 row.

Bind off.

SEED STITCH SQUARES

(make 12 – 2 with B only; 4 with C only; 1 each with C/A and D/A only; 2 each with C/B and A/B)

Cast on 17 sts.

Work in Seed st pattern for 26 rows.

Bind off.

UNDERARM PIECES (make 2)

With D, cast on 14 sts.

Rows 1-5: Work in Seed st pattern for 5 rows.

Row 6 (RS): K1, skp, work in Seed st pattern to last 3 sts, k2tog, k1 – 12 sts.

Rows 7-30: Rep Rows 1-6 until only 4 sts rem.

Rows 31-36: Work in Seed st pattern for 6 rows.

Row 37: K1, k2tog, k1 – 3 sts.

Row 38: Sk2p – 1 st.

Fasten off last st.

LEFT NECK PIECE

With C, cast on 12 sts.

With C, work Row 1 of Seed st pattern.

Row 1 (RS): With C, k1, M1, work in Seed st to last 3 sts, k2tog, k1.

Row 2: With A, work in Seed st.

Row 3: With A, k1, M1, work in Seed st to last 3 sts, p2tog tbl, k1.

Row 4: With C, work in Seed st.

Rows 5-24: Rep Rows 1-4 for 5 more times.

Rows 25 and 26: Rep Rows 1 and 2.

Continue to change yarn color every other row, working 2 rows of A and 2 rows of C, to end of piece.

Work even in Seed st for 26 rows.

Bind off.

RIGHT NECK PIECE

With B, cast on 12 sts.

Work Row 1 of Seed st pattern.

Row 1 (RS): K1, skp, work in Seed st to last st, M1, k1.

Row 2: Work in Seed st.

Row 3: K1, spp, work in Seed st to last st, M1, k1.

Row 4: Work in Seed st.

Rows 5-24: Rep Rows 1-4 for 5 more times.

Rows 25 and 26: Rep Rows 1 and 2.

Work even in Seed st for 26 rows.

Bind off.

FINISHING

Following diagrams, sew pieces together to make Body and Sleeves.
Sew Sleeves seams, then sew Sleeves into armholes.

Lower Edging

From RS with D, pick up and k148 sts evenly spaced along lower edge of Body.
Knit 1 row.
Bind off.

Front and Neck Edging

From RS with D, pick up and k62 sts evenly spaced along right front edge, 98 sts evenly spaced along neck edge, and 62 sts evenly spaced along left front edge – 222 sts.
Knit 1 row.
Bind off.

Sleeve Edging

From RS with D, pick up and k40 sts evenly spaced along wrist edge of one Sleeve.
Knit 1 row.
Bind off.
Rep edging along wrist edge of 2nd Sleeve.
Weave in ends.
Block to measurements.

ABBREVIATIONS

k = knit

k2tog = knit 2 stitches together

p = purl

p2tog = purl 2 stitches together

rep = repeat

RS = right side

st(s) = stitch(es)

St st = Stockinette stitch

tbl = through back loop

WS = wrong side



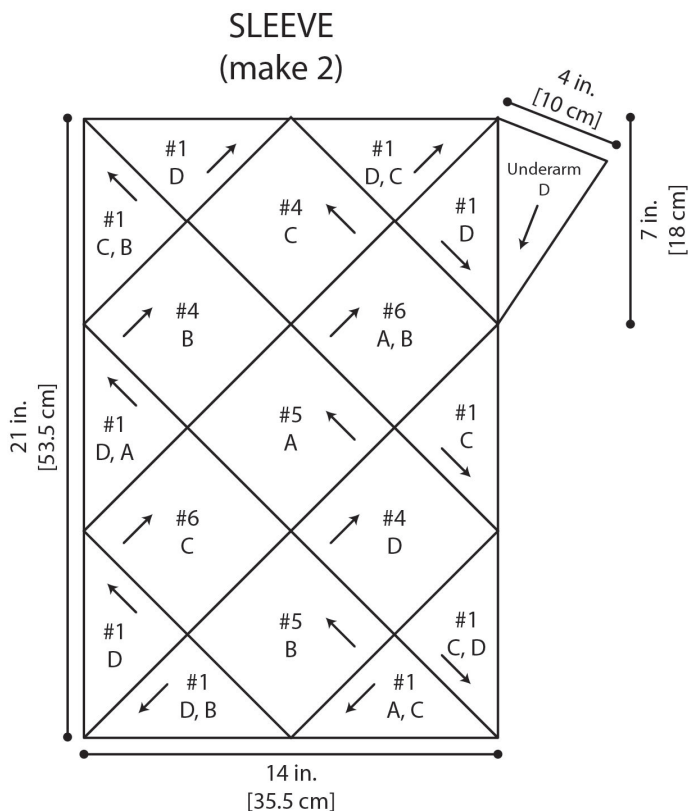
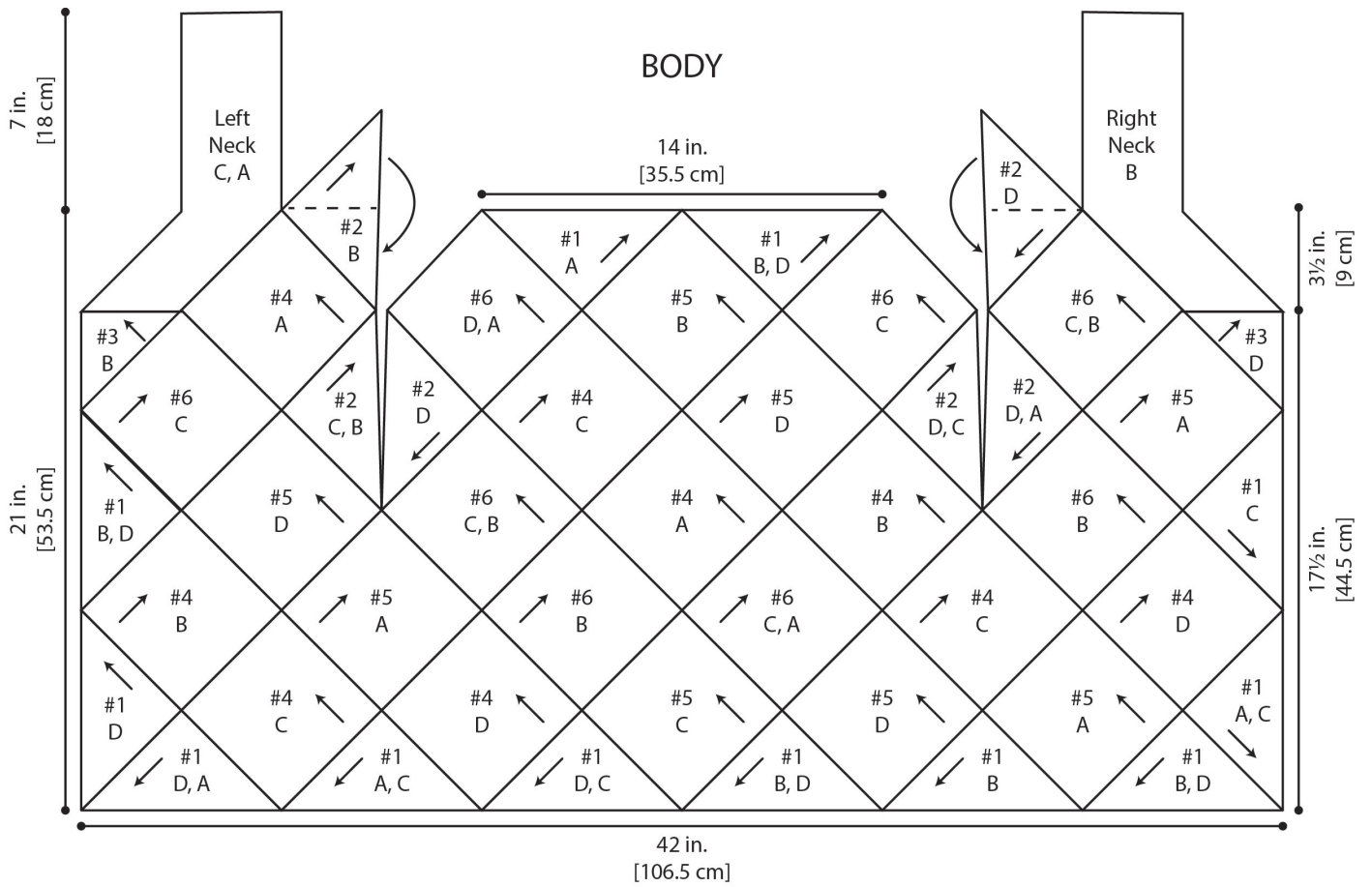
Every effort has been made to produce accurate and complete instructions. We cannot be responsible for variance of individual knitters or crocheters, human error, or typographical mistakes.

©2023 Lion Brand Yarn Company, all rights reserved.

For thousands of free patterns, visit our website www.LionBrand.com

To order visit our website www.lionbrand.com or call: 877-412-9772 any time! Every effort has been made to produce accurate and complete instructions. We cannot be responsible for variance of individual makers, human error, or typographical mistakes.

©2023 Lion Brand Yarn Company, all rights reserved.



KEY	
#1	= Right Slanting Triangle
#2	= Left Slanting Triangle
#3	= Small Triangle
#4	= Horizontal Dash Square
#5	= Triangle Stitch Square
#6	= Seed Stitch Square
↑	= direction of work