

LITTLE GREEN™



2067 SERIES

# IMPORTANT SAFETY INSTRUCTIONS

## READ ALL INSTRUCTIONS BEFORE USING YOUR APPLIANCE.

Unplug from outlet when not in use and before conducting maintenance. When using an electrical appliance, basic precautions should be observed, including the following:

## **WARNING**

### TO REDUCE THE RISK OF FIRE, ELECTRIC SHOCK, OR INJURY:

- » The appliance is not to be used by persons (including children) with reduced physical, sensory or mental capabilities, or lack of experience and knowledge, unless they have been given supervision or instruction.
- » Children should be supervised to ensure that they do not play with the appliance.
- » If the supply cable is damaged, it must be replaced by the manufacturer, its service agent, or similarly qualified person in order to avoid a hazard.
- » Keep hair, loose clothing, fingers, and all parts of body away from openings and moving parts of the appliance and its accessories.
- » Unplug from electrical socket when not in use and before cleaning, maintaining or servicing the appliance.
- » Do not run appliance over cable.
- » Use only the type and amount of liquids specified under the Operations section of this guide.
- » Do not leave appliance when plugged in.
- » Use only as described in this user guide.
- » Use only manufacturer's recommended attachments.
- » Do not use with damaged cable or plug.
- » Do not immerse in water or liquid.
- » If appliance is not working as it should, has been dropped, damaged, left outdoors, or dropped into water; do not attempt to operate it and have it repaired at an authorized service center.
- » Do not pull or carry by cable, use cable as a handle, close door on cable, or pull cable around sharp edges or corners.
- » Keep cable away from heated surfaces.
- » To unplug, grasp the plug, not the cable.
- » Do not handle plug or appliance with wet hands.
- » Do not put any object into openings.
- » Do not use with any opening blocked; keep free of dust, lint, hair, and anything that may reduce air flow.
- » Turn off all controls before unplugging.
- » Use extra care when cleaning on stairs.
- » Do not use to pick up flammable or combustible liquids, such as petroleum, or use in areas where they may be present.
- » Do not pick up toxic material (chlorine bleach, ammonia, drain cleaner, etc.)
- » Do not use appliance in an enclosed space filled with vapours given off by oil base paint, paint thinner, some mothproofing substances, flammable dust, or other explosive or toxic vapours.
- » Do not pick up hard or sharp objects such as glass, nails, screws, coins, etc.
- » Keep appliance on a level surface.
- » Do not pick up anything that is burning or smoking, such as cigarettes, matches, or hot ashes.
- » Do not use without dust bag and/or filters in place.
- » Always connect to a properly earthed electrical socket. Do not modify earthed plug.
- » Liquid must not be directed towards equipment containing electrical components.
- » Do not carry appliance while in use.
- » If your appliance has a TurboBrush™ Tool, unplug machine before connecting or disconnecting the tools. The appliance is not to be used if it has been dropped, if there are visible signs of damage or if it is leaking.
- » The appliance is not to be used if it has been dropped, if there are visible signs of damage or if it is leaking.
- » Keep the appliance out of reach of children when it is energized or cooling down.

## **WARNING**

**TO REDUCE THE RISK OF FIRE AND ELECTRIC SHOCK, USE INDOORS ONLY . DO NOT IMMERSE. USE ONLY ON SURFACES MOISTENED BY THE CLEANING PROCESS. USE ONLY BISSELL CLEANING PRODUCTS INTENDED FOR USE WITH THIS MACHINE.**

**TO REDUCE THE RISK OF FIRE AND ELECTRIC SHOCK, ALWAYS INSTALL FLOAT BEFORE ANY WET PICK-UP OPERATION.**

# SAVE THESE INSTRUCTIONS

**FOR OPERATION ON A 220-240 VOLT A.C. 50-60 HZ POWER SUPPLY ONLY.**

This model is for household use only.

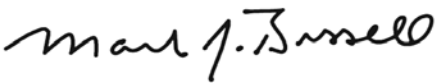
# Thanks for buying a BISSELL portable deep cleaner

We're glad you purchased a BISSELL portable deep cleaner. Everything we know about floor care went into the design and construction of this complete, high-tech home cleaning system.

Your BISSELL portable deep cleaner is well made, and we back it with a limited one-year guarantee. We also stand behind it with a knowledgeable, dedicated Consumer Care department, so, should you ever have a problem, you'll receive fast, considerate assistance.

My great-grandfather invented the floor sweeper in 1876. Today, BISSELL is a global leader in the design, manufacture, and service of high quality homecare products like your BISSELL portable deep cleaner.

Thanks again, from all of us at BISSELL.



Mark J. Bissell  
Chairman & CEO

Safety Instructions . . . . .	2
Product View . . . . .	4
Assembly . . . . .	5
Operations . . . . .	5-6
Maintenance & Care . . . . .	6
Troubleshooting . . . . .	7
Guarantee . . . . .	8
Consumer Care . . . . .	8

# Product View



- 1 Clean Water/Solution Tank
- 2 Quick Release™ Cord Wrap
- 3 Power Cord
- 4 Power Switch
- 5 Tough Stain Tool
- 6 Dirty Water/Collection Tank
- 7 Flex Hose Clip
- 8 Flex Hose

## Cleaning fluid

Keep plenty of genuine BISSELL portable machine formula on hand so you can clean whenever it fits your schedule. Always use genuine BISSELL cleaning formulas. Non-BISSELL cleaning solutions may harm the machine and may void the guarantee.



BISSELL 2X  
Portable  
Machine  
Spot & Stain  
Formula

## **WARNING**

To reduce the risk of fire and electric shock due to internal component damage, use only BISSELL cleaning fluids intended for use with the portable deep cleaner.

## **WARNING**

Use only BISSELL portable machine formula in your cleaner. Use of cleaning formulas which contain lemon, pine oil or vinegar may damage this appliance and void the guarantee. Chemical spot cleaners or solvent-based soil removers also should not be used. These products may react with the plastic materials used in your cleaner, causing cracking or pitting.

## TIPS

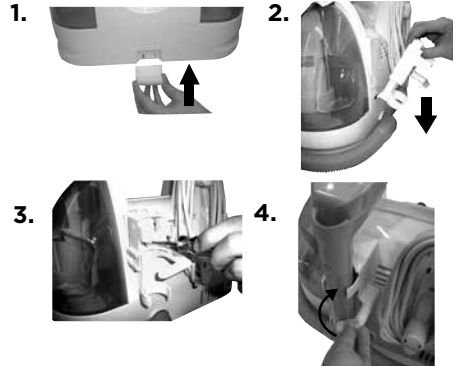
» Check upholstery stuffing before cleaning. Colored stuffing may bleed through the fabric when it becomes wet.

» If a significant amount of water and solution remains in the clean tank, your unit can be stored with liquid in the clean tank.

# Assembly

Assembling your portable deep cleaner is a simple process. The only thing you will need to assemble your cleaner is a Phillips-head screwdriver.

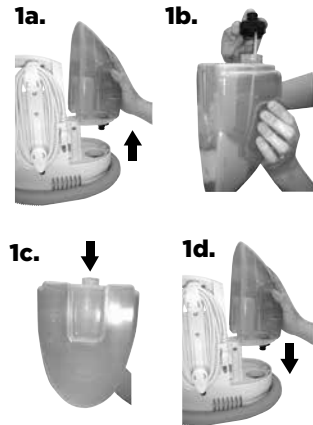
1. Slide the back plate of the flex hose clip into the opening on the front of the unit. You will hear a “snap” when it is locked in place.
2. Take the flex hose storage bracket and slide the lower plate into the opening on the back of unit. Make sure the screw holes line up.
3. Insert screw and tighten with a screwdriver.
4. Wrap the flex hose around unit and place hose grip into bracket. Turn bracket latch clockwise to lock in place.



# Operations

## Getting ready

1. To fill the clean water/solution tank.
  - a. Remove the tank by lifting it straight up and then away from the unit.
  - b. Unscrew the black cap at the bottom of the clean/solution tank.
  - c. Follow the fill lines on your clean tank to add the correct amount of hand hot tap water (140°F/60°C MAX), portable machine formula. **DO NOT BOIL OR MICROWAVE WATER.**
  - d. Replace the clean/solution tank by lining up the vertical guides on the left side of the unit with the indentations on the clean/solution tank and gently sliding it down into position.



## Pre-treating

Cleaning effectiveness will be enhanced if you pre-treat heavily stained or highly-soiled areas. Here's how to do it:

1. Hold the cleaning tool just above the surface of the carpet or upholstery to be cleaned. Press the trigger to release a spray of cleaning solution directly onto the soiled area.
2. Wait 3-5 minutes before cleaning.

# Operations

## Cleaning with the Tough Stain Tool

1. Attach the Tough Stain Tool to the handheld cleaning hose.
2. Plug in the unit and press the power button beneath the handle to turn it on.
3. Hold the tool 2.5 cm above soiled surface.
4. Press the spray trigger to mist solution over and onto the soiled area.
5. Release the spray trigger and gently scrub the stain.
6. To lift the stain away, apply downward pressure on the tool and slowly pull it toward you. Watch as powerful suction removes the dirt and cleaning solution. Continue until no more dirt can be removed.
7. As a final step, use “drying strokes” (by not pressing the spray trigger) to remove as much moisture as possible. Repeat this step as often as necessary.

## IMPORTANT

Check the manufacturer's tag before cleaning upholstery. “W” or “WS” on the tag means you can use your Little Green. If tag is coded with an “S” (with diagonal strike-through), or says “Dry Clean Only,” do not proceed. If manufacturer's tag is missing or not coded, check with your furniture dealer.



# Maintenance & Care

## After Cleaning

1. Turn power switch to OFF position.
2. Unplug power cord from outlet.
3. Empty and rinse the dirty/collection tank after each use, OR when dirty water reaches the indicated maximum fill line. To remove the tank, lift up the dirty/collection tank retainer lever and remove the tank from the unit.
4. Disconnect the cleaning tool from the spray trigger by pushing down on button lock and pulling straight off (DO NOT twist tools to remove them).
5. Once removed from the spray trigger, all tools can be cleaned by rinsing under clean running water.
6. Check spray nozzle for accumulated dirt or debris. If necessary, clean with soft bristle brush.
7. To flush the tools and hose before storage, suction up a bowl of clean water to ensure all debris are removed.

## WARNING

To reduce the risk of electric shock, turn power switch off and disconnect plug from electrical outlet before performing maintenance or troubleshooting checks.

3. Retainer Lever



## Machine storage

1. Wipe all surfaces with a soft cloth.
2. Wrap power cord around the cord wrap on the back of the cleaner.
3. Wrap flex hose around the base of the unit and secure the spray trigger.
4. Store unit in protected, dry area, at room temperature.

# Troubleshooting

## **WARNING**

To reduce the risk of electric shock, turn power switch off and disconnect plug from electrical outlet before performing maintenance or troubleshooting checks.

<b>Problem</b>	<b>Possible causes</b>	<b>Remedies</b>
<b>Reduced spray or no spray</b>	Spray nozzle clogged	Clean spray nozzle
	Clean water/solution tank empty	Check/refill tank
	Clean water/solution tank insert clogged	Clean insert at bottom of clean water/solution tank
	Pump needs priming	Gently lift clean water/solution tank while pressing the spray trigger OR gently squeeze clean tank while pressing spray trigger
<b>Deep Cleaner won't pick up cleaning solution</b>	Tank release latch is not closed properly	Lift up the tank release latch and press down firmly to make sure it is in place
	Poor tool position	Reposition tool on surface, follow recommended cleaning procedures
	Dirty water/collection tank is full	Empty dirty water/collection tank
	Excess solution in vacuum flex hose	Lift tool and point upwards to allow water in hose to flow into the dirty water/collection tank
	Incorrect cleaning formula	Use BISSELL portable machine formulas only

**Please do not return this product to the store.**

Other maintenance or service not included in the manual should be performed by an authorized service representative.

Thank you for selecting a BISSELL product.

# Consumer Guarantee

This guarantee gives you specific legal rights, in addition to rights you may have under the Australian consumer law. If you need additional instruction regarding this guarantee or have questions regarding what it may cover, please contact your local BISSELL consumer services on the details set out below.

## Limited 1 Year Guarantee from the date of purchase by original purchaser

Subject to the \*conditions identified below, BISSELL will repair or replace (with new or remanufactured components or products), at BISSELL's option, free of charge, any defective or malfunctioning part due to manufacturer defect. This guarantee applies to product used for personal purposes, and not commercial or rental service. This guarantee does not apply to fans or routine maintenance or consumable components such as filters, belts, brush rolls, etc., damage or malfunction caused by negligence, abuse, neglect, unauthorized repair, or any other use not in accordance with the user's guide. BISSELL recommends that the original packaging be kept for the duration of the guarantee period in case such need arises within the guarantee period that the item needs re-packing and transportation.

### \*CONDITIONS OF GUARANTEE

Subject to whether such loss is reasonably foreseeable, BISSELL and its in-country distributors are not liable for incidental or consequential damages of any nature associated with the use of this product.

### FOR AUSTRALIAN CONSUMERS ONLY:

OUR GOODS COME WITH GUARANTEES THAT CANNOT BE EXCLUDED UNDER THE AUSTRALIAN CONSUMER LAW. YOU ARE ENTITLED TO A REPLACEMENT OR REFUND FOR A MAJOR FAILURE AND FOR COMPENSATION FOR ANY OTHER REASONABLY FORESEEABLE LOSS OR DAMAGE. YOU ARE ALSO ENTITLED TO HAVE THE GOODS REPAIRED OR REPLACED IF THE GOODS FAIL TO BE OF ACCEPTABLE QUALITY AND THE FAILURE DOES NOT AMOUNT TO A MAJOR FAILURE.

THIS GUARANTEE IS IN ADDITION TO OTHER RIGHTS OR REMEDIES UNDER LAW. NOTHING IN THIS GUARANTEE EXCLUDES, LIMITS OR MODIFIES ANY LIABILITY OF BISSELL WHICH IS IMPOSED BY LAW, OR LIMITS OR MODIFIES ANY REMEDY AVAILABLE TO THE CONSUMER WHICH IS GRANTED BY LAW. TO MAKE A CLAIM UNDER THIS GUARANTEE CONTACT BISSELL AUSTRALIA PTY LTD (DETAILS ABOVE). CONTACT BISSELL PRIOR TO RETURNING ANY GOODS. WHERE AGREED, BISSELL WILL REIMBURSE REASONABLE POSTAGE / HANDLING COSTS (IF ANY) FOR RETURNING GOODS TO BISSELL. TO CLAIM EXPENSES INCURRED IN MAKING A CLAIM UNDER THIS GUARANTEE PLEASE PROVIDE BISSELL WITH A COPY OF THE RECEIPT OF THE EXPENSES BY EMAIL OR POST.

## Consumer Care

If your BISSELL product should require service or to claim under our limited guarantee, please contact us as follows:

### Website:

[www.BISSELL.com](http://www.BISSELL.com)

### Email:

[consumercare@bissell.com](mailto:consumercare@bissell.com)

### Write:

BISSELL AUSTRALIA PTY LIMITED  
42 Rocco Dr.  
Scoresby 3179  
Victoria  
Australia

### Telephone:

Australia: 1300-247-735  
New Zealand: 0800-247-735

Replacement parts and accessories are available for purchase. To purchase visit [www.BISSELL.com](http://www.BISSELL.com)

## Visit the BISSELL website: [www.BISSELL.com](http://www.BISSELL.com)

When contacting BISSELL, have model number of cleaner available.

Please record your Model Number: \_\_\_\_\_ Please record your Purchase Date: \_\_\_\_\_

**NOTE: Please keep your original sales receipt. It provides proof of the date of purchase in the event of a Guarantee claim. See Guarantee for details.**



©2017 BISSELL Homecare, Inc.  
Grand Rapids, Michigan  
All rights reserved. Printed in China  
Part Number 161-1080 12/16 RevB  
Visit our website at: [www.BISSELL.com](http://www.BISSELL.com)