

Rovers North NAS90 Door Trim (RNA4750) Fitting Guide

There were two different styles of door used on the Defender NAS90. The different styles of doors used different check-strap mechanisms and consequently there were two slightly different door trim designs used on the NAS90.

Early NAS90s (1993/94) were fitted with the early 'Series' Land Rover round rod style check-strap pictured left.

Later NAS90s (1994 on) swapped to the more common flat profile Defender check-strap pictured right.

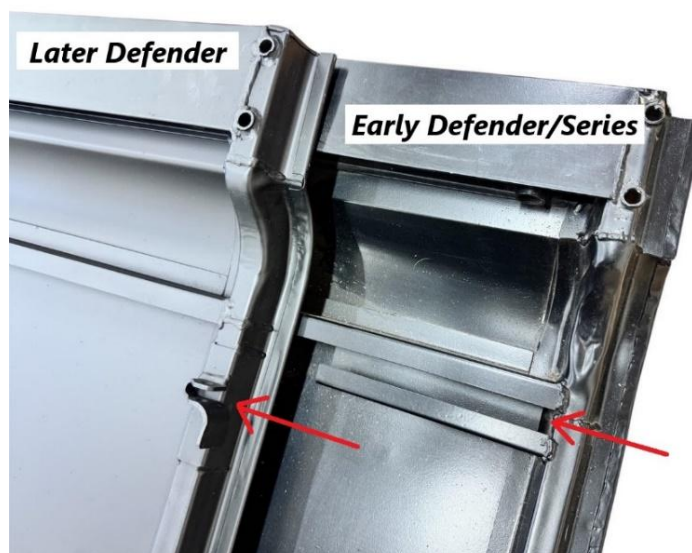


**Early Defender
Check-Strap**



**Later Defender
Check-Strap**

Note how the different check-strap designs sit at different heights on the doors and bulkhead. We've tweaked the original NAS door trim design to ensure our trims are compatible with both the 'early' check-strap or 'later' check-strap locations. The Rovers North trims will fit also Series half-doors and will replace the military 'Wolf' Defender trims. When buying new doors, remember to match up the check-strap type on the doors to the check-strap type on your bulkhead.



No modifications need to be made to the door or bulkhead in order to fit the trims. The installer only needs to trim away the area of the door trim at the leading edge to provide an opening for their respective check-strap/door set-up.

The Rovers North NAS90 door trims are designed to fit with the anti-burst door handles fitted as standard on the NAS90. The anti-burst door handles can easily be identified by the sliding locking tab mechanism on the inside of the handle. On Series Land Rovers, upgrading to anti-burst door handles (and door striker plates) is a popular and easy bolt-on 'safety' upgrade.



Installing the RN NAS Door Trims

Offer up the door trim onto your door. Mark the area of the door trim around the leading edge (door hinge end of the trim) that needs to be opened up to accommodate your check-strap type. The plastic material can be cut with a sharp bladed knife, multi tool, Dremel etc. Trim away a small section of plastic at a time until you're happy with the fit around the check-strap.

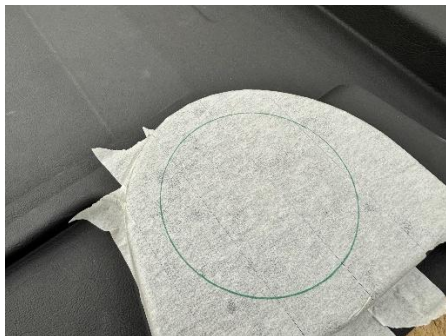


The NAS90 was fitted with a 6.5in (165mm) speaker from the factory.



Any speaker up to a maximum diameter of 6.5in (165mm) will fit into the area of the trim we've left blank for the speakers.

A 6.5in speaker will typically require a 5in diameter hole cutting out of the panel but exact cut-out sizing will vary between speakers. Check the cut-out dimensions against your speakers. New speakers will often be supplied with a template for the cut-out. Mark your speaker cut-out onto the trim and use a jigsaw to cut out the opening for your speakers.



Now install your speaker into the door trim.



Speaker wiring between the door and bulkhead can be protected using the Genuine rubber trunking/grommet used on the Defender. Land Rover part **YQQ000070**. This part *is not* included within the Door Trim kit.



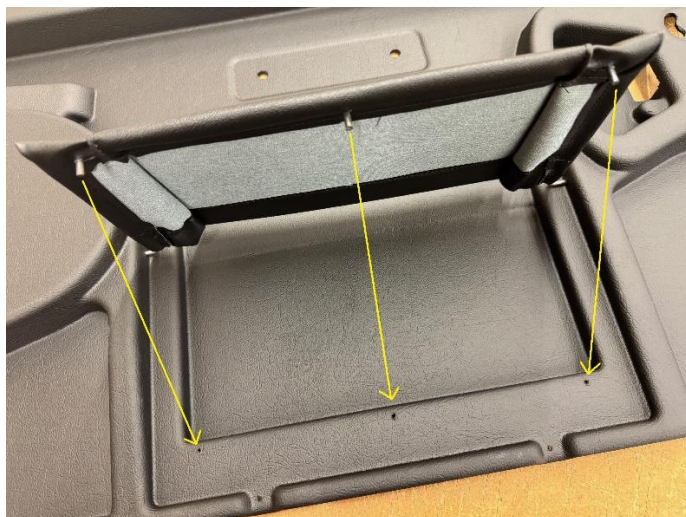
Adding a layer of sound deadening material (e.g. Dynamat, Stinger Roadkill etc) to the back of the door trim and to the internal surface of the door is an effective way to improve the audio quality from your speakers.



To install the door pockets squeeze the upper part of the U-shaped frame of the door pocket inwards to align with their upper mounting holes. You may wish to paint the exposed upper prongs black before fitment.



Now fold the door pocket downwards, aligning the three lower pegs on the door pocket wire frame with the three holes in the trim. Push the three pegs through the holes in the door trim.



Secure the net frame to the back of the trim using the 5x rectangular spire clips.



Push the spire clips onto the ends of the wire frame at the back of the trim. Use a small diameter deep socket or the flat end of a pair of pliers to push down on each of the spire clips until they touch the back of the trim.



The screw fixings supplied within the fitting kit are the same specification as those used by Land Rover on the original NAS90 door trims to ensure they'll fit any existing fixing holes in original doors.

Any new fixing holes will require a 5/16 (3mm) drill for the 24x #8 external door trim fixings.

Use a 9/64 (3.5mm) drill for the 4x #10 plastic door handle fixings.

Our door trim design is based upon an original pair of NAS90 door trims. 3d laser scanning technology was used to ensure dimensional accuracy. We are aware that 'some' aftermarket Land Rover doors are not quite as accurate with

respect to their sizing. Pic below is of an original Genuine NAS90 door trim mounted onto a brand new aftermarket door. We recommend you check any 'new' doors for accuracy before painting and/or drilling any fixing holes!



We recommend the finest quality aftermarket British made doors by *Paintman Panels*. www.paintmanpanels.co.uk

RNA4750

V1.0 05/2025