



Free Knitting Pattern

Earflap Hat



Pattern # -

M23017 LG

Yarn -

Lion Brand® Local Grown

SKILL LEVEL – EASY

SIZE

Finished Circumference About 21 in. (53.5 cm), will stretch to fit a range of sizes

MATERIALS

- LION BRAND® LOCAL GROWN (Art. #668)
#133 Maple 1 ball (A)
#191 Lilac 1 ball (B)
- LION BRAND® stitch markers
- LION BRAND® stitch holders
- LION BRAND® large-eyed blunt needle



ADDITIONAL MATERIALS

Circular knitting needle size 8 (5 mm), 16 in. (40 cm) long

Double pointed knitting needles size 8 (5 mm), set of 4

Pom-pom maker

GAUGE

17 sts + 20 rnds = about 4 in. (10 cm) over St st worked in rnds (k every st of every rnd) and Fair Isle colorwork.
BE SURE TO CHECK GAUGE.

STITCH EXPLANATIONS

kfb (knit in front and back) Knit next st without removing it from left needle, then knit through back of same st – 1 st increased.

ssk (slip, slip, knit) Slip next 2 sts as if to knit, one at a time, to right needle; insert left needle into fronts of these 2 sts and knit them tog – 1 st decreased.

NOTES

1. Hat is worked in rnds from the top downwards.
2. Work begins on double pointed needles, changing to circular needle when sts have been sufficiently increased.
3. Top of Hat is worked in Garter st worked in rnds (knit 1 rnd, purl 1 rnd) and shaped with increases. Body of Hat is worked in St st worked in rnds (k every st of every rnd) and Fair Isle colorwork following Chart. Read all rnds of Chart from right to left. Carry color not in use across WS of work. If carrying color across 5 or more sts, twist yarns on WS to prevent overly long strands (floats) on the WS.
4. After body of Hat is complete, sts are bound off for back and front of Hat and earflaps are worked in Garter st worked in rows (k every st of every row). Work earflaps using 2 double pointed needles or circular needle, working back and forth in rows as if working with straight needles.
5. I-cord Ties are worked directly onto lower tips of earflaps.

HAT

With A, cast on 6 sts. Divide sts onto double pointed needles, placing 2 sts on each of 3 needles. Place marker for beg of rnd. Join by working the first st on left hand needle with the working yarn from the right hand needle and being careful not to twist sts.

Top of Hat

Rnd 1: With A, (kfb) 6 times – you will have 12 sts in this rnd.

Note: Stitch markers are placed in next rnd to indicate increase locations. Beg of rnd marker also serves as an increase location marker. To avoid confusion, use a unique color marker for beg of rnd marker.

Rnd 2: With A, (p2, place marker (pm)) 5 times, p2 – you will have 2 sts between markers.

Rnd 3 (Increase Rnd): With A, kfb, (k to next marker, slip marker (sm), kfb) 5 times, k to end of rnd – 18 sts (3 sts between markers).

Rnd 4: With A, purl, slipping markers as you come to them.

Rnds 5-14: With A, rep Rnds 3 and 4 for 5 more times – 48 sts (8 sts between markers).

Stripes

Rnds 15 and 16: With B, rep Rnds 3 and 4 – 54 sts (9 sts between markers).

Rnds 17 and 18: With A, rep Rnds 3 and 4 – 60 sts (10 sts between markers).

Rnds 19-26: Rep Rnds 15-18 twice, changing to circular needle when sts have been sufficiently increased – 84 sts (14 sts between markers).

Rnd 27: Rep Rnds 15 and 16, removing markers as you work Rnd 16 – 90 sts (15 sts between markers).

Charted Fair Isle Colorwork

Rnd 1: Knit AND change yarn color following Row 1 of Chart.

Rnds 2-24: Beg with Rnd 2 of Chart, work in St st worked in rnds (k every st of every rnd) AND change yarn color following Chart, repeating the 6-st pattern 15 times in each rnd, until all 24 rnds of Chart have been completed.

With B, knit 1 rnd.

With B, purl 1 rnd.

With A, knit 1 rnd.

Bind off for Front and Back

Next Rnd: With A, bind off 10 sts as if to purl for back of Hat, p17 and place these sts on a holder for first earflap, bind off 36 as if to purl for front of Hat, p17 and place these sts on a holder for second earflap, bind off last 10 sts for back of Hat.

Cut yarn.

First Earflap

Return 17 first earflap sts to a double pointed needle or circular needle, so that you are ready to work a RS row. Work back and forth in rows.

Rows 1 and 2: With B, knit 2 rows.

Rows 3 and 4: With A, knit 2 rows.

Rows 5-16: Rep Rows 1-4 for 3 more times.

Rows 17 and 18: With B, knit 2 rows.

Cut B. Work remainder of earflap with A only.

Row 19 (Decrease Row – RS): K1, k2tog, k to last 3 sts, ssk, k1 – 15 sts.

Row 20: Knit.

Rep Rows 19 and 20 for 5 more times – 5 sts remain when all decreases have been completed.

I-cord Tie: Using 2 double pointed needles, knit the 5 sts. Do not turn work. * Slide sts to other end of needle and knit them, pulling yarn tightly across the back of the work, (do not turn work); rep from * until cord measures about 10 in. (25.5 cm) long.

Bind off.

Second Earflap

Work same as first earflap.

FINISHING

Follow package directions to make a pom-pom using yarn colors of your choice.

Tie pom-pom to top of Hat.

Weave in ends.

ABBREVIATIONS

beg = begin(ing)

k = knit

k2tog = knit 2 stitches together

p = purl

rep = repeat(ing)

rnd(s) = round(s)

RS = right side

St st = Stockinette stitch

st(s) = stitch(es)

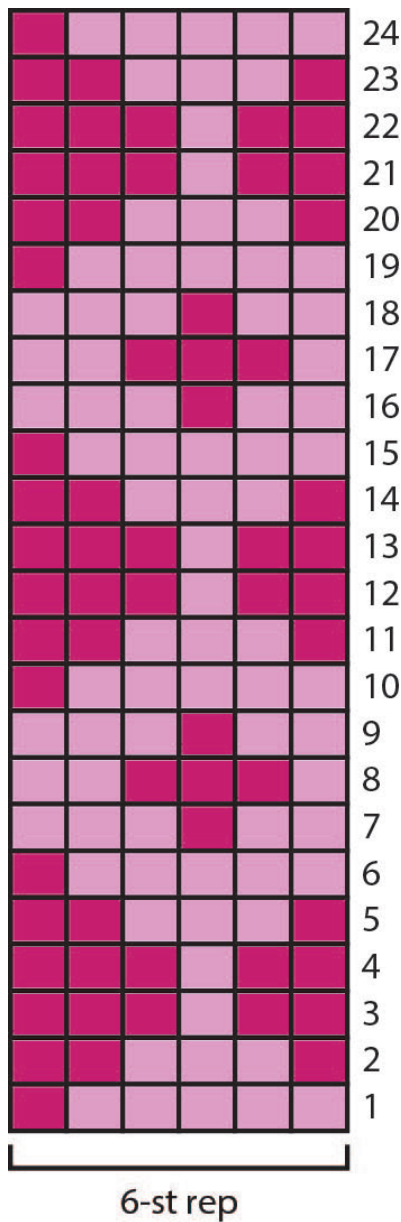
WS = wrong side



Every effort has been made to produce accurate and complete instructions. We cannot be responsible for variance of individual knitters or crocheters, human error, or typographical mistakes.

©2023 Lion Brand Yarn Company, all rights reserved.

For thousands of free patterns, visit our website www.LionBrand.com
To order visit our website www.lionbrand.com or call: 877-412-9772 any time! Every effort has been made to produce accurate and complete instructions. We cannot be responsible for variance of individual makers, human error, or typographical mistakes.
©2023 Lion Brand Yarn Company, all rights reserved.



COLOR KEY

#133 Maple (A)

#191 Lilac (B)