



## Installation Guide

# FIRTH WALL LIGHT

Thoughtful lighting, responsibly designed in London.

Thank you for making the switch to Tala.  
Discover the full Tala family at [tala.co.uk](http://tala.co.uk).

### BEFORE STARTING

Please read instructions thoroughly before installation and keep them for future reference. Please take extreme care when dealing with electrical equipment.

Do not open the fixture or remove the desiccant until ready to install to prevent moisture entering the fixture. Ensure you install the product in a dust free environment to ensure no impurities are trapped in the assembly.

Improper assembly can undermine the safety and longevity of the product.

### IMPORTANT

This light fitting must be connected to the supply earth. If your lighting circuit does not have an earth, ask a qualified electrician to provide an earth facility. This fitting operates on 120V mains voltage. Please visit our website to see our recommended dimmers.

This product is suitable for use in bathrooms and outdoor locations\*. Do not submerge.

### WARNING

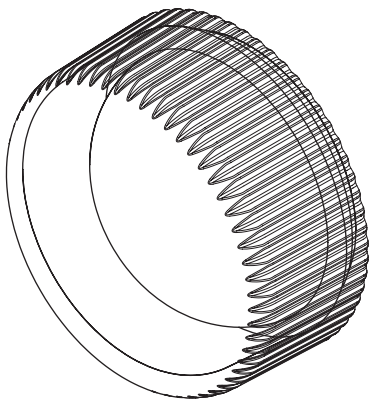
Always switch off electricity supply at the mains during installation and maintenance. We recommend that the fuse is withdrawn or the circuit breaker is switched off whilst work is in progress. Do not just turn off at the wall switch. All fittings must be installed in accordance with current NFPA 70, National Electrical Code (NEC).

### RECOMMENDED EQUIPMENT

- Philips head screwdriver
- Wire strippers

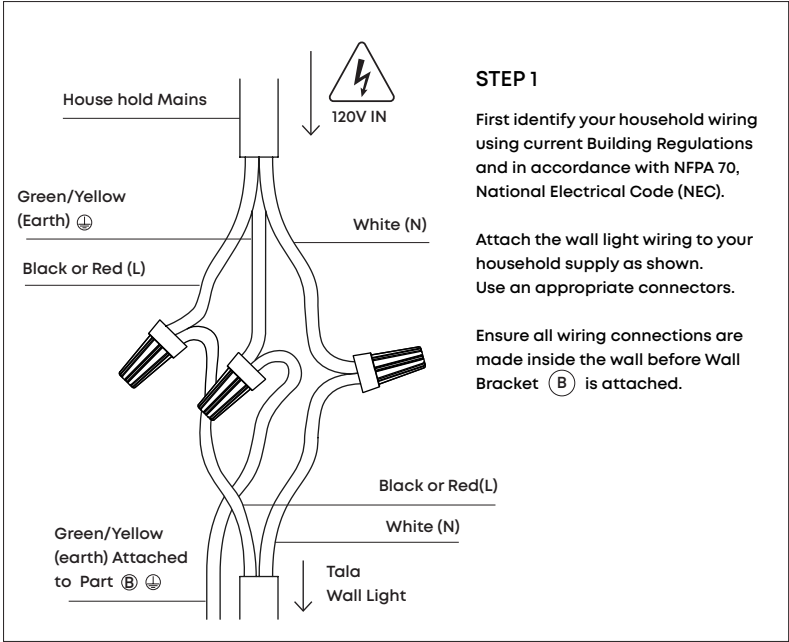
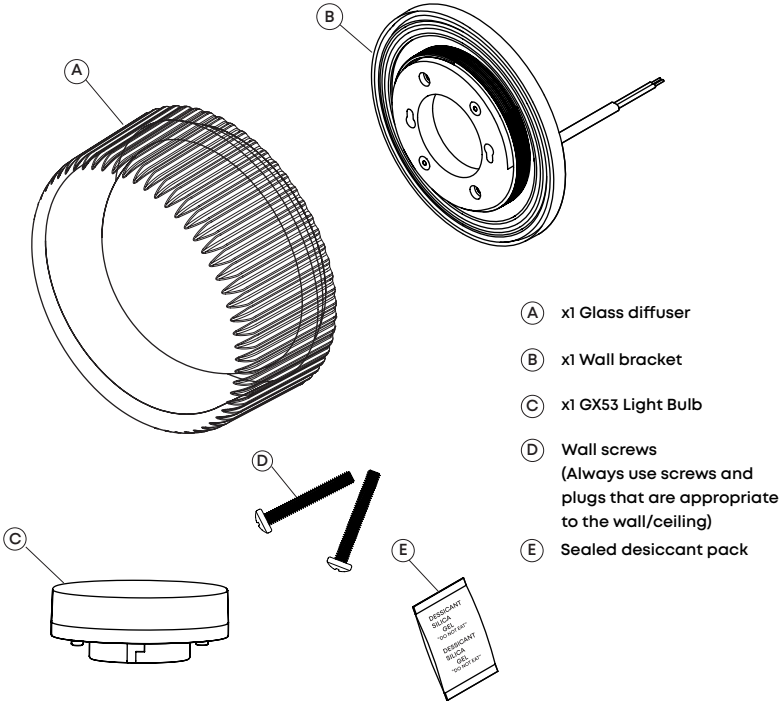
Further equipment may be required for fixing to your wall.

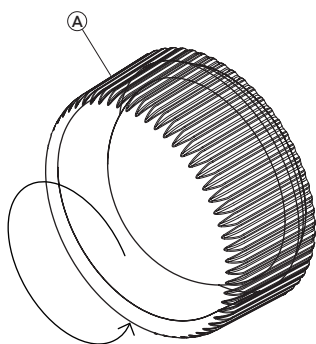
Please visit our website to see our recommended dimmers.



# Firth Wall Light - Provided Components

Do not open the fixture or remove the desiccant until ready to install to prevent moisture or dust entering the fixture.



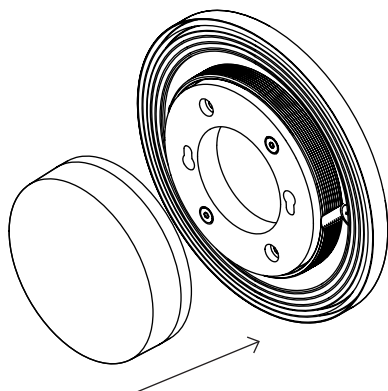
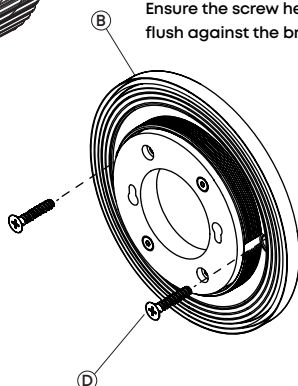


## STEP 2

Unscrew the Glass diffuser (A).  
Do not throw away the additional  
desiccant packet.

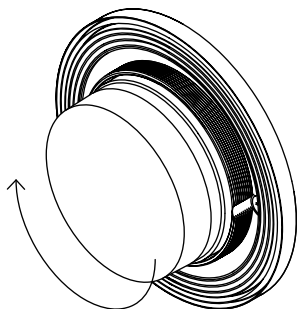
Attach (B) to your wall using screws  
and plugs (D).

Always use screws and plugs that are  
appropriate to the ceiling/wall type.  
Ensure the screw heads are flat and  
flush against the bracket surface.



## STEP 3

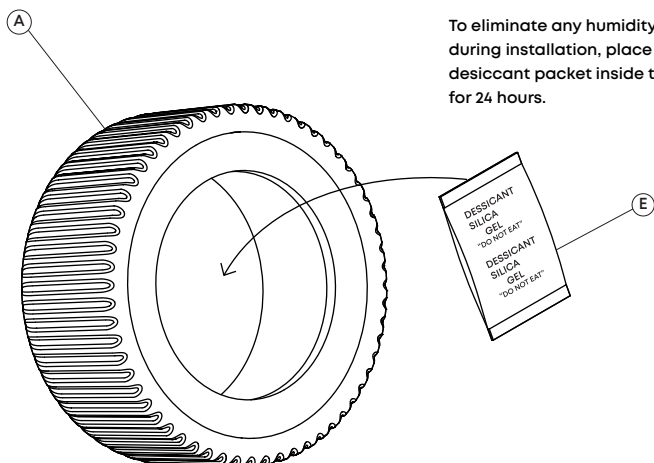
Insert the bulb (C) into the wall  
light and rotate to lock in place.



#### STEP 4

Ensure the Glass Diffuser is free of dust and impurities.

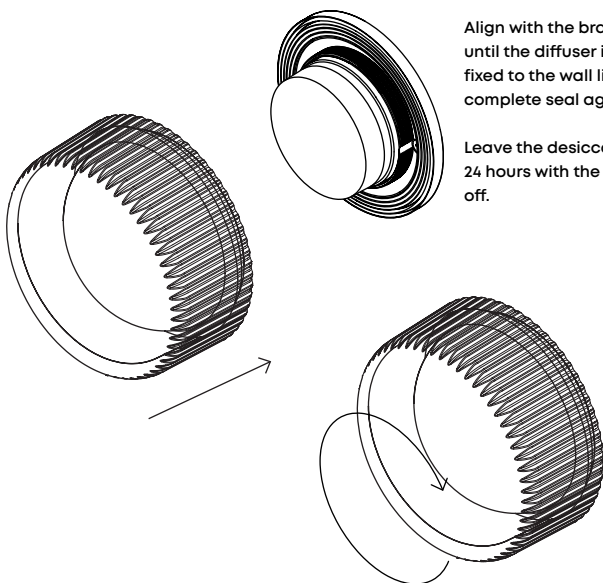
To eliminate any humidity present during installation, place a desiccant packet inside the glass for 24 hours.

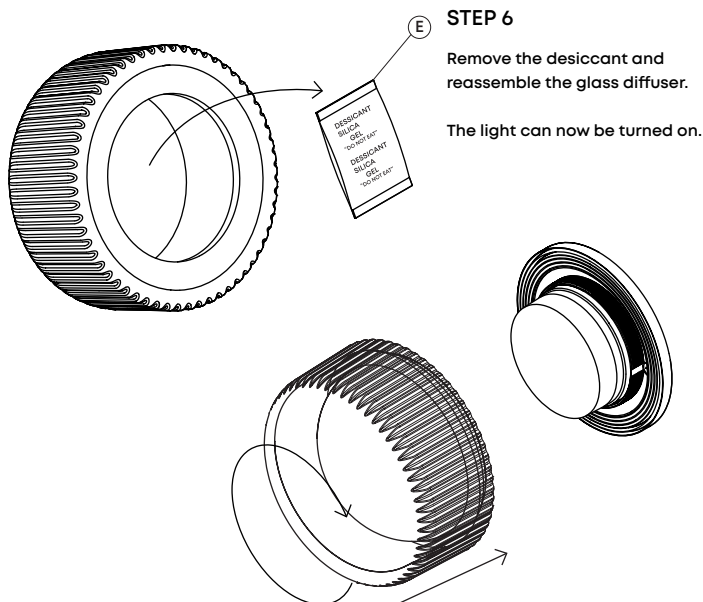


#### STEP 5

Align with the bracket and rotate until the diffuser is securely fixed to the wall light, ensuring a complete seal against the glass.

Leave the desiccant in place for 24 hours with the light switched off.





\*IP65 is an international standard that indicates that an electrical enclosure is dust tight and watertight against water spray from any angle. Suitable for outside settings but not submersion.

---

## CARE AND CLEANING

We recommend cleaning with a soft dry cloth.  
Do not use abrasive materials as these will damage the finish of the product. Do not use alcohol or other solvents.

## WARRANTY AND AFTER-CARE

This product has a two-year warranty. If there appears to be a functional defect with the product during this time, please contact our team at [customerservice@tala.co.uk](mailto:customerservice@tala.co.uk).

Please note, if the cable attached to this fixture is damaged, it should only be replaced by qualified person.

---

## Join the Community

[hello@tala.co.uk](mailto:hello@tala.co.uk) | Instagram: @tala | Facebook: talaHQ | Pinterest: TalaLED | Tag: lighttoliveby  
Tala North America Inc. 909 Rose Avenue, Suite 660, North Bethesda, MD 20852