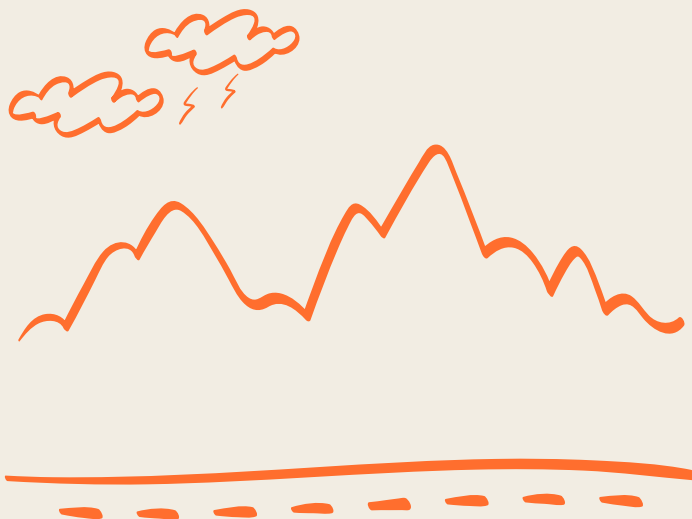


Tidal **REV**

ELECTRIC SKATEBOARD MANUAL



retrospec[™]

Thanks for purchasing the Tidal Rev electric skateboard. We know you'll love your new board.

Before operating this skateboard, read all the instructions and keep this User's Manual for future reference. This manual includes useful tips and important safety information on using and handling Tidal Rev. Read through everything, as the manufacturer is not responsible or liable for any damages or injuries caused by inappropriate use or handling of this electric skateboard.

Safety Instructions

Like other activities, skateboarding has risks. Vehicle traffic, trick riding, and excessive speed can lead to collision, loss of control, and falls. Even experienced riders have been injured and killed. Take knowledge to the extreme and follow these important tips for safer riding:

Minimum Age

Tidal Rev is designed for riders 14 years of age and older. Children 14 and over, individuals with reduced physical, sensory or mental capabilities, and inexperienced riders must ride supervised by a guardian in a safe environment only if all safety precautions are understood and followed.

Health

Tidal Rev is not a toy. Individuals under 18 years old should not clean and service the skateboard unsupervised. Tidal Rev is not suitable for persons whose health might be at risk in the event of a fall (Children, Elderly, Pregnant Women, etc.).

Environment

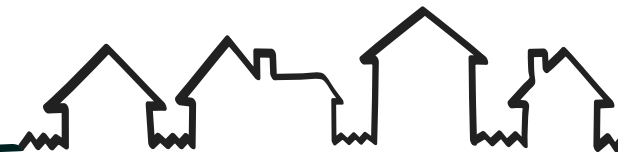
Protect this skateboard from moisture, humidity, water and any other liquids. Avoid using/ storing it in extreme temperatures. Do not expose it to direct sunlight and other sources of heat. Before connecting the board to the power supply socket (wall socket), make sure the voltage indicated on the appliance corresponds to the voltage in the power supply socket.



- ✓ Use only authorized accessories.
- ✓ Do not climb or descend steep hills.
- ✓ Do not turn on the skateboard in midair.
- ✓ Do not jump off nor on your skateboard.
- ✓ Do not use this skateboard near flammable products.
- ✓ Do not lift the skateboard off the ground when it is turned on.
- ✓ Do not use this skateboard when operation appears abnormal.
- ✓ Do not attempt to repair/disassemble this skateboard yourself.
- ✓ In case of damage, contact an authorized service point or the seller for repair.
- ✓ Disconnect the skateboard from the power supply before cleaning and service.
- ✓ Do not ride this skateboard off of curbs, ramps or attempt to operate in a skate park, empty pool etc. Performing such actions will lead to damage of the electrical components and battery underneath the board.
- ✓ This skateboard is designed for one person at a time only! It's prohibited for two persons to ride the skateboard at once. When riding this skateboard, you should comply with local laws and regulations including traffic laws.
- ✓ Do not ride after drinking, taking drugs/medications of any kind, or any other substances which may affect your cognitive or motor skills. Alcohol and drugs reduce your ability to control your skateboard and react to unexpected circumstances which greatly increase your chances of injury or death.

Weight Limit

Maximum rider weight is 220lbs / 100kgs. Do not overload the skateboard, as it may lead to damage and injuries.



Riding Tips

Clothing

It is recommended to wear comfortable clothing that does not block, limit or restrict movements of the user. Wear shoes – comfortable, flat shoes to maintain flexibility and full motion range.

Practice

Practice your riding skills in an open space, on flat and even surface. Avoid places with pedestrians and obstacles before you feel you are comfortable with your riding skills. Make sure you've mastered getting on the board, accelerating, coming to a stop, and making turns before you try higher speeds.

Safe Riding

Be safe

Be sure to apply all appropriate safety measures when riding this skateboard.

Wear protective gear when riding

Wearing a helmet can mean the difference between life and death. Always wear a helmet! We strongly suggest knee pads, elbow pads, wrist guards, and other protective gear.

Body position

Relax your legs while riding and slightly bend your knees, as this can help maintain balance when encountering uneven ground. Keep your feet on the deck.

Ride wisely

Do not ride faster than you can handle. You can lose control of your skateboard at any speed. Never lie down on a skateboard in motion.

Inspect your riding terrain

Avoid riding on steep slopes, through potholes or bumps. The weight of the user and their belongings should not exceed the maximum load indicated in the instructions (220lbs/100kgs). Overloading may lead to injuries or damages.

- Slow down when on uneven ground!
- Pay attention when riding near cables and cords!
- Do not ride on surfaces made of loose fabric or covered in items that could get in/entangle in the wheels (e.g. thick carpet).

Ride during the day

Avoid riding at dusk and dawn or in other low-light conditions where you cannot see or be seen easily by vehicles.

Speed Perspective

Ensure the skateboard speed is safe for you and others. Keep a safe distance from other objects and people to avoid collisions. Keep in mind that when you are on the skateboard, your height has increased. Remember this while riding through narrow spaces, i.e. doors, portals, fence passes, etc.

Stay clear of moving vehicles

Some of the most common and severe skateboarding accidents involve collisions with moving vehicles. Do not ride where you are likely to encounter traffic. Never hitch a ride ("skitch") onto a moving vehicle.

Do not ride in bad weather

Do not ride this skateboard on rainy or snowy days. Do not ride on slippery ground (i.e. snow, ice, wet surfaces).

Never ride alone

This skateboard is designed for ages 14 and older. Parents should review these instructions and warnings carefully with their child before use and should exercise supervision to ensure their child is using the product safely as instructed.

Inspect/Adjust your board before riding

Always check your board before riding. Check for excessive play (looseness), and any broken, cracked, or worn parts. Serious defects should be fixed by a qualified repair shop/technician.

What is Speed Wobble?

Speed wobble is what happens when a skateboard begins to shimmy from side to side unexpectedly. Within seconds, this can lead to a board rocking so violently that the rider is thrown-off the board before having a chance to react.

To reduce the risk of Speed Wobble:

- Watch your speed – boards with wider hangers (wheels further apart), give riders greater control and stability.
- Keep trucks, wheels, nuts, and mounting screws properly tightened to improve stability at higher speeds.

Always wear a helmet

Your helmet should fit snugly with the chin strap always fastened, as it can come off upon impact if it is too loose. Your helmet should be level on your head – not tilted back. Wear a helmet designed for skateboarding (hard shell –ABS– with EPS foam interior).

Electric Skateboard- What's in the Box



1.



2.



3.



4.



5.

1. 1x E-skateboard
2. 1x Charger (charge board battery)
3. 1x Wireless remote controller
4. 1x USB cable (charge remote controller)
5. 1x T-shape tool
6. 1x User's manual

Product Specifications

Speed-Distance	Speed- Low/Med/High	9/15/22mph / 15/25/35km/h
	Distance (range)	9.5-12.5mi / 15-20km
Battery	Capacity	4.0Ah
	Watts	168W
	Charging Time	2-3 hrs
	Volts	36V
Motor	Power, Size	1000W x 2, 90mm dual hub motors
Charger	Voltage	42V
	Input	110-240V
	Output	42V
Remote Controller	Capacity	3.7V/150mAh / 0.15Ah
	Frequency	2.4GHz
	Control Distance	26-33ft / 8-10m
	Charging Time	0.5 hrs
Deck	Dimensions	36.8 x 8.7" / 93.5 x 22cm
	Material	8-ply: 1 bamboo, 7 maple
	Grip Tape	OS780-extra grit
Trucks	Width - Hanger	7.5" / 190mm
	Length - Axle	10.25" / 260mm
	Material	Cast aluminum alloy
	Type	Slant reverse kingpin
	Bushings/Cushions	95A high-rebound
	Risers	3mm
Wheels	Dimensions	Front: 90 x 52mm / 3.54 x 2" Rear: 90 x 56mm / 3.58 x 2.2"
	Material	PU-85A
	Bearings	ABEC-9 w/rubber shields
Weights	Rider (max)	220lbs / 100 kg
	Board (no packaging)	15.0 lbs / 6.8 kg
Age		14+

Product Description



Remote Control



Remote Control

Power on/off the remote control

- Short press the “Power” button to power on the remote controller, **(1)** Power/Signal Indicator Light is lit, power is on.
- Long press the “Power” button (3 seconds) to turn off the Remote Controller, **(1)** Unit is off when the Power/Signal Indicator Light is off.
- When the Remote Control loses its connection to the board it will automatically shut down within 30 seconds. As long as the Remote Control-Board connection is maintained, the Remote Control will not automatically shut down. When powering off the board, wait 30 seconds for the board and remote control to completely disconnect and shut down.

Switch direction of skateboard

- The board must be stationary when changing the Forward/Reverse setting.
- Short press the “Reverse” button to identify the direction of the board.
 - Flashing Green is Forward – When powering on the remote, Forward/Flashing Green is the default setting.
 - Flashing Red is Reverse.
- Long press (3 seconds) to switch between the forward and reverse directions.

Changing speeds of skateboard

With the Remote Control powered on, Short press the Power button to switch between the four speeds of the board:

- Low speed (5) is the bottom solid red light to the right of the skateboard icon
- Medium-speed (4)
- High-speed (3)
- Sport-speed (2)

Speed changing mode will exit after 3 seconds – all 4 lights will be lit.

Switching of the brake force of the skateboard

Pull the “roller” back on the remote control, but do not turn it on. At the same time, short press the “Power” button to switch the four gears of the skateboard braking force:

- First gear **(5)** flashing
- Second gear **(4)** flashing
- Third gear **(3)** flashing
- Fourth gear **(2)** the file flashes

Charging the Remote Control

The remote control is charged with the Micro USB cable. When the fully charged Remote Control is connected, the indicator light and the four speed levellights (2,3,4,5) flash and move quickly. All four lights are on to indicate that the remote control is fully charged. During charging, the light is always on and the light is the charging indicator.

Low battery indicator

When the Remote Control battery is low, the power indicator will flash. When you see this, turn off the skateboard and the Remote Control. Charge the Remote Control. Do not use the board when the remote control’s battery is low.

Battery

- Do not use the board when it is charging!
- Always check that the battery is fully charged before using.
- Charge the device only with the included/authorized power adapter.
- Ensure the charging port and the entire board is dry prior to charging!
- Do not continue riding when the battery reaches minimum – this will compromise battery life.
- Do not ride when the battery is low! Charge the battery when the battery indicator signals low level.
- Do not use the board if the battery gives off any odor, excessive heat, or if there’s leakage.

Charging

1. Plug the charger into the wall socket (110 – 240 V; 50/60 Hz) – the light on the charger is green.
2. Plug the other end of the charger into the board battery – the light on the charger turns red.
3. When the charger indicator light turns from red to green, charging is complete. Disconnect charger from device and electrical outlets. Do not overcharge the device, as it may affect battery life.



⚠️ WARNINGS!

- Check the battery level before using. Do not ride when the battery is low.
- When the skateboard battery level is below 10%, the device will issue a sound. When this happens, STOP, step off the board, and TURN IT OFF.

Battery Indicators

The 4 LED indicator bars on the board and remote controller show the battery levels:

- Remote power indicator (shows when the remote is on)
- Skateboard battery level indicator-10% indicates when skateboard battery level is 10%
- Skateboard battery level indicator-60% indicates when skateboard battery level is 60%
- Skateboard battery level indicator-100% indicates when skateboard battery level is fully.

Cleaning

Never clean this e-board while charging! Clean the unit's exterior periodically with a soft, slightly damp cloth, then wipe dry. Never use chemical agents to clean!

Storage

Do not store the skateboard if its battery level is very low or discharged. Fully charge before storage. Charging the battery before storage prevents over-discharge caused by long-term non-use storage. Charge the device's battery every three months if the skateboard is left unused to maintain the longevity of the battery.

⚠️ WARNING!

Risk of fire - Do not wrap up the skateboard, place it in a carry bag, or place it in the package right after charging. The battery and charger may get warmer during charging, which is a fire risk.

Contact Us



Need some help with your new gear? Just want to say “hey” and talk to someone on our team? We’re here for that too.

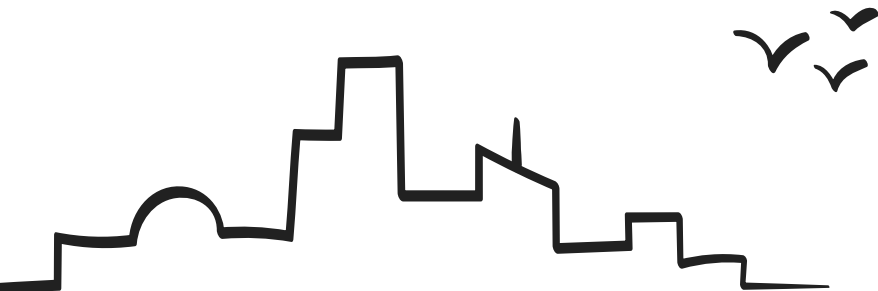
team@retrospec.com

Give us a follow, while you’re at it:

Instagram: [@retrospec](#)

[#retrospec](#)

[#readytooutdoor](#)



Making Nature Second Nature

