



Vola

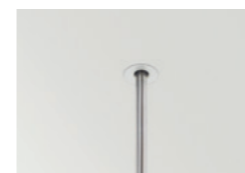
SUSPENSION

EXTENDED FAMILY
Vola_P.223

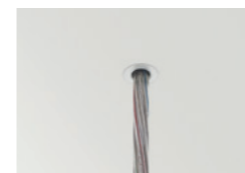


>> MORE INFO

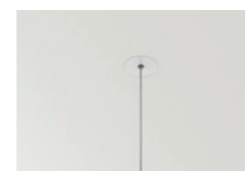
MAINS TRIMLESS



MAINS THICK TRIMLESS



STEEL CABLE TRIMLESS



		P	CCT	I	Flux	LOR
VOLA Suspension	A442-00- 00 -0- WT NT	19W	2700K	500mA	3080 lm	80%
	A442-00- 00 -1- WT NT	19W	3000K	500mA	3160 lm	80%
	A442-00- 00 -2- WT NT	19W	4000K	500mA	3320 lm	80%

220 V~ | IP20 | CRI>90 | L80B10 >60.000h



00 *OPTIONS

1	No DIM
2	DIM DALI
3	DIM Push
5	DIM Phase Cut

OPTIONAL ACCESSORIES

WIRE TRIMLESS Accessories

FEED

Mains Trimless

A023-00-01- | W | N | NO DIM

Mains Thick Trimless

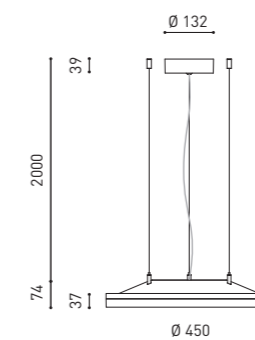
A023-00-02- | W | N | DIM



FASTENING

Steel Cable Trimless

A023-00-05- | W | N | 3 Pcs. needed



COLOUR | WT □ | NT ■ | W □ | N ■ |

MATERIAL | AL | PC |

RAL ⓘ » 538

* OTHER DIM OPTIONS PLEASE CONSULT

» PLEASE CONSULT



Sports Center for Überlingen School Campus, Überlingen (Germany) | wulf architekten | Photography: Brigida González