



LITTLE GREEN
2067 SERIES



What's in the Box? 3

Assembly 3

Cleaning Formulas 4

Spot Cleaning Carpet & Upholstery 5

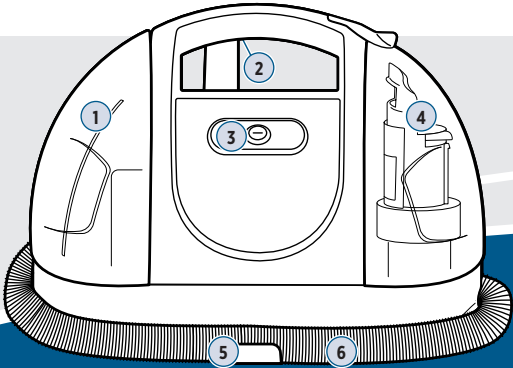
After-Cleaning Care..... 6

Troubleshooting..... 7

Guarantee..... 8

Product Overview

- 1. Clean Water Tank
- 2. Quick Release Cable Wrap
- 3. Power Switch
- 4. Dirty Water Tank
- 5. Flex Hose Clip
- 6. Flex Hose with Spray Trigger



Go online for a comprehensive walkthrough of your product!

This guide has everything you need to get ready for first use, including setting up, using and maintaining your machine, but online you'll find additional resources like tips and troubleshooting, videos, product registration, parts, and more. Go to **BISSELL.com**.

IMPORTANT SAFETY INSTRUCTIONS

READ ALL INSTRUCTIONS BEFORE USING YOUR APPLIANCE.

When using an electrical appliance, basic precautions should be observed, including the following:



WARNING

TO REDUCE THE RISK OF FIRE, ELECTRIC SHOCK OR INJURY:

- » This appliance is not intended for use by persons (including children) with reduced physical, sensory or mental capabilities, or lack of experience and knowledge, unless they have been given supervision or instruction concerning use of the appliance by a person responsible for their safety.
- » Children should be supervised to ensure that they do not play with the appliance.
- » Unplug from electrical socket when not in use, before cleaning, maintaining, or servicing the appliance, and if your appliance has an accessory tool with a moving brush, before connecting or disconnecting the tool.
- » Do not immerse in water or liquid.
- » Keep hair, loose clothing, fingers, and all parts of body away from openings and moving parts of the appliance and its accessories.
- » Use only on carpet or upholstery moistened by the cleaning process.
- » Liquid must not be directed towards equipment containing electrical components.
- » Do not immerse. Use only on surfaces moistened by the cleaning process. Use only BISSELL® cleaning products intended for use with this machine.
- » Use only the type and amount of liquids specified under the operations section of

this guide.

- » Always connect to a properly earthed electrical socket. Do not modify earthed plug.
- » Always install float before any wet pick-up operation.
- » Plastic film can be dangerous. To avoid danger of suffocation, keep away from children.
- » Use only as described in this user guide.
- » Use only manufacturer's recommended attachments.
- » If appliance is not working as it should, has been dropped, damaged, left outdoors, or dropped into water; do not attempt to operate it and have it repaired at an authorised service center.
- » Do not put any object into openings.
- » Do not use with any opening blocked; keep free of dust, lint, hair, and anything that may reduce air flow.
- » Use extra care when cleaning on stairs.
- » Do not use to pick up flammable or combustible liquids, such as petroleum, or use in areas where they may be present.
- » Do not pick up toxic material (chlorine bleach, ammonia, drain cleaner, etc.).
- » Do not use appliance in an enclosed space filled with vapours given off by oil-based paint, paint thinner, some moth-proofing substances, flammable dust, or other explosive or toxic vapours.
- » Do not pick up hard or sharp objects such as glass, nails, screws, coins, etc.
- » Do not pick up anything that is burning or smoking, such as cigarettes, matches or hot ashes.
- » Do not use without filters in place.
- » Use indoors only.
- » If the supply cable is damaged, it must be replaced by the manufacturer, its service agent or similarly qualified person in order to avoid a hazard.
- » Do not run appliance over cable.
- » Do not leave appliance when plugged in.
- » Do not use with damaged cable or plug.
- » Do not pull or carry by cable, use cable as a handle, close door on cable, or pull cable around sharp edges or corners.
- » Keep cable away from heated surfaces.
- » To unplug, grasp the plug, not the cable.
- » Do not handle plug or appliance with wet hands.
- » Turn off all controls before unplugging.

SAVE THESE INSTRUCTIONS

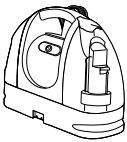



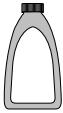

ORIGINAL INSTRUCTIONS. FOR OPERATION ON A 220-240 VOLT A.C. 50-60 HZ POWER SUPPLY ONLY.

THIS MODEL IS FOR HOUSEHOLD USE ONLY.

IMPORTANT INFORMATION

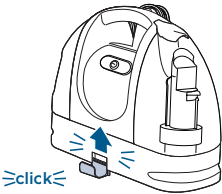
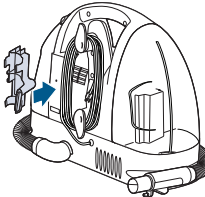
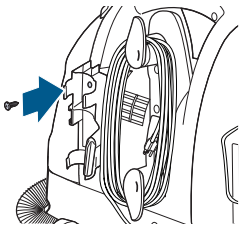
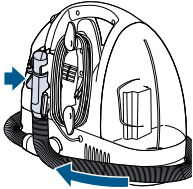
- » Keep appliance on a level surface.
- » To reduce the risk of a leaking condition, do not store machine where freezing may occur. Damage to internal components may result.

What's in the Box?

					
Little Green	Flex Hose Clip	Flex Hose Storage Bracket	Tough Stain Tool	Trial-Size BISSELL® Formula	(1) Screw

Assembly

You will need a Phillips-head screwdriver for assembly.

 <p>1. Slide the back plate of the Flex Hose Clip into the opening on the front of the machine. You will hear a “click” when it is locked in place.</p>	 <p>2. Take the flex hose storage bracket and slide the lower plate into the opening on the back of machine. Make sure the screw holes line up.</p>	 <p>3. Insert screw and tighten with a screwdriver.</p>
 <p>4. Wrap the flex hose around machine and place hose grip into bracket. Turn bracket latch clockwise to lock in place.</p>		

⚠ WARNING Do not plug in your portable carpet & upholstery washer until you are familiar with all instructions and operating procedures.

Cleaning Formulas

Find more formulas at [BISSELL.com](https://www.bissell.com).

Note: Always use genuine BISSELL® cleaning formulas for portable carpet and upholstery washers in your machine.

Pretreat

Pretreat spots and stains to improve cleaning performance.



Stain Pretreat

Loosens set-in stains & odours before carpet washing.



Pet Stain Pretreat

Loosens tough pet stains & odours before carpet washing.

Formula

Keep plenty of BISSELL cleaning formulas on hand so you can clean whenever it fits your schedule.



Spot & Stain

Quick and effective spot cleaning.



Pet Stain & Odour

Removes tough pet stains & odours.

Boost

Add to any formula to increase its effectiveness.

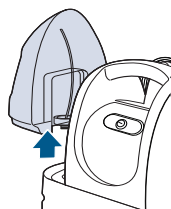


Oxy Boost

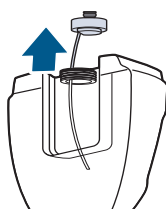
Add to formula for permanent stain removal.

⚠ WARNING To reduce the risk of fire and electric shock due to internal component damage, use only BISSELL cleaning formula intended for use with this machine. Use of cleaning formulas that contain eucalyptus, lemon or pine oil may damage this appliance and void the guarantee. Chemical spot cleaners or solvent-based soil removers should not be used. These products may react with the plastic materials used in your carpet washer causing cracking or pitting.

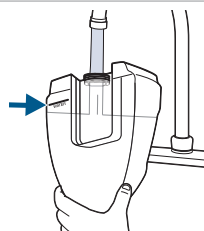
Spot Cleaning Carpet & Upholstery



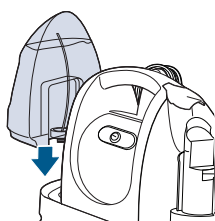
1. Remove the Clean Water Tank by lifting it straight up and then away from the machine.



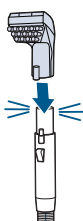
2. Unscrew the black cap at the bottom of the tank.



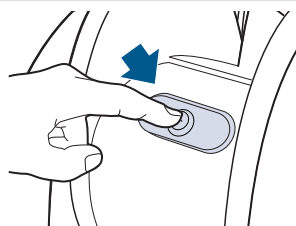
3. Follow the fill lines on tank to add the correct amount of warm tap water (140°F/60°C MAX), formula, and 30mL of BISSELL® Boost if preferred. **Do not boil or microwave water.**



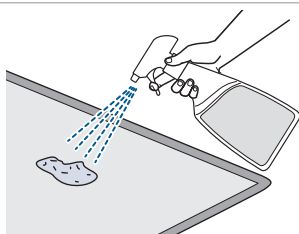
4. Replace the tank by lining up the vertical guides on the left side of the machine with the indentations on the tank and slide it down into place.



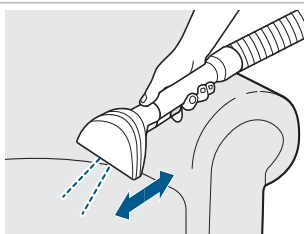
5. Attach the Tough Stain Tool to the handheld cleaning hose.



6. Plug in the machine and press the Power Switch beneath the handle to turn it on.



7. Optional: Pretreat the spot or stain. Press the trigger to spray solution directly onto the soiled area. Wait 3-5 minutes before cleaning.

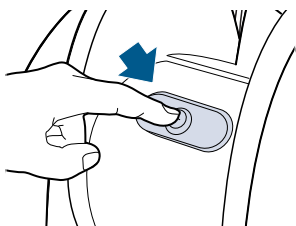


8. Hold tool about 2.5 cm above soiled surface. Press spray trigger to apply cleaning solution. Release trigger, apply downward pressure, and pull toward you to suction up dirt and cleaning solution. Do not overwet.

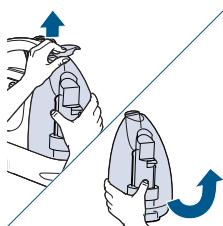
IMPORTANT: Check the manufacturer's tag before cleaning upholstery. If manufacturer's tag is missing or not coded, check with your furniture dealer. Test a small, hidden area for colourfastness and examine when dry. If colour is affected do not use. Do not use on silk or velvet.

⚠ WARNING Keep spray away from face. Failure to do so may result in personal injury.

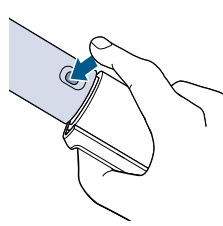
After-Cleaning Care



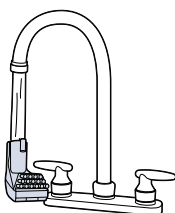
1. Turn Power Switch to OFF position. Unplug power cable from outlet.



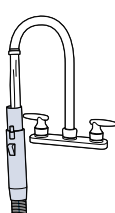
2. Empty and rinse the Dirty Water Tank after each use, OR when dirty water reaches the fill line. To remove the tank, lift up the Dirty Water Tank retainer lever.



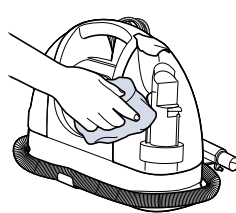
3. Disconnect the cleaning tool from the spray trigger by pushing down on button lock and pulling straight off (DO NOT twist tools to remove them).



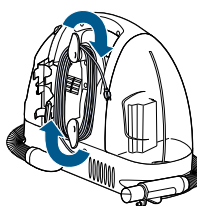
4. Once removed from the spray trigger, all tools can be cleaned by rinsing under clean running water. Check spray nozzle for accumulated dirt or debris. If necessary, clean with soft bristle brush.



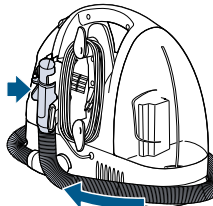
5. To flush the tools and hose before storage, suction up a bowl of clean water to ensure all debris are removed.



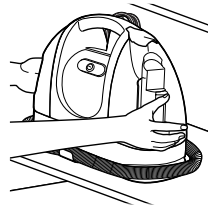
6. Wipe all surfaces with a soft cloth.



7. Wrap power cable around the cable wrap on the back of the Little Green.



8. Wrap flex hose around the base of the machine and secure the spray trigger.



9. Store machine in protected, dry area at room temperature.

⚠ WARNING To reduce the risk of electric shock, turn Power Switch OFF and disconnect plug from electrical outlet before performing maintenance or troubleshooting checks.

Troubleshooting

Below are some of the issues you may run into. If you don't see the issue you're experiencing below, visit [BISSELL.com](https://www.bissell.com).

Problem	Possible Cause	Remedies
Reduced spray or no spray	Spray nozzle clogged	Clean spray nozzle
	Clean Water Tank empty	Refill tank
	Clean Water Tank insert clogged	Clean insert at bottom of tank
	Pump needs priming	Gently lift Clean Water Tank while pressing the spray trigger OR gently squeeze clean tank while pressing spray trigger
Machine won't pick up cleaning solution	Tank release latch is not closed properly	Lift up the tank release latch and press down firmly to make sure it is in place
	Poor tool position	Reposition tool on surface, follow recommended cleaning procedures
	Dirty Water Tank is full	Empty tank
	Tool brush worn	Replace with new brush
	Excess solution in flex hose	Lift tool and point upwards to allow water in hose to flow into the Dirty Water Tank
	Incorrect cleaning formula	Only use BISSELL® portable machine formulas (with BISSELL Boost if desired)

Guarantee

This guarantee gives you specific legal rights, in addition to rights you may have under the *Australian Consumer Law*. If you need additional instruction regarding this guarantee or have questions regarding what it may cover, please contact your local BISSELL Consumer Care on the details set out below.

It may be necessary to obtain some of your personal information, such as a mailing address, to fulfill terms of this guarantee. Any personal data will be handled pursuant to BISSELL's Privacy Policy, which can be found at global.BISSELL.com/privacy-policy.

BISSELL® One Year Guarantee

Subject to the *conditions identified below, BISSELL will repair or replace (with new, refurbished, lightly used, or remanufactured components or products), at BISSELL's option, free of charge from the date of purchase by the original purchaser, for one year any defective or malfunctioning part due to manufacturer defect. This guarantee applies to product used for personal purposes, and not commercial or rental service. This guarantee does not apply to fans or routine maintenance or consumable components such as filters, belts, brush rolls, etc., damage or malfunction caused by negligence, abuse, neglect, unauthorized repair, or any other use not in accordance with the user guide. BISSELL recommends that the original packaging be kept for the duration of the guarantee period in case such need arises within the guarantee period that the item needs re-packing and transportation.

*Conditions of Guarantee

Subject to whether such loss is reasonably foreseeable, BISSELL and its in-country distributors are not liable for incidental or consequential damages of any nature associated with the use of this product.

For Australian Consumers Only: Our goods come with guarantees that cannot be excluded under the *Australian Consumer Law*. You are entitled to a replacement or refund for a major failure and for compensation for any other reasonably foreseeable loss or damage. You are also entitled to have the goods repaired or replaced if the goods fail to be of acceptable quality and the failure does not amount to a major failure.

This guarantee is in addition to other rights or remedies under law. Nothing in this guarantee excludes, limits or modifies any liability of BISSELL which is imposed by law, or limits or modifies any remedy available to the consumer which is granted by law. To make a claim under this guarantee contact BISSELL Australia PTY LTD (details below). Contact BISSELL prior to returning any goods. Where agreed, BISSELL will reimburse reasonable postage / handling costs (if any) for returning goods to BISSELL. To claim expenses incurred in making a claim under this guarantee please provide BISSELL with a copy of the receipt of the expenses by email or post.

Consumer Care

Australia

Telephone: 1300 247 735

Website: www.BISSELL.com.au

New Zealand

Telephone: 0800 247 735

Website: www.BISSELL.co.nz

But wait, there's more!

Join us online for a complete guide to your new product, including troubleshooting, parts and more. **Go to BISSELL.com.**



INFO



VIDEOS



PARTS



©2020 BISSELL Inc. All rights reserved.
Part Number 1623999 05/20