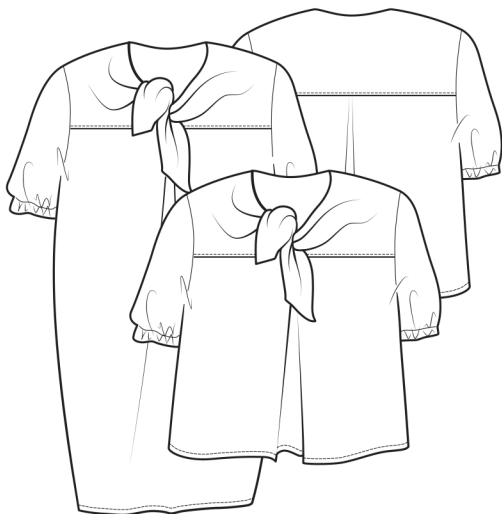


The Tie Blouse and Dress



UK size	4	6	8	10	12	14	16	18	20	22
Inches										
Bust	28	30	32	34	36	38	40	42	44	46
Waist	21	23	25	27	29	31	33	35	37	39
Hips	31	33	35	37	39	41	43	45	47	49

Centimetres										
Bust	71	76	81	86	91	96	101	106	111	116
Waist	54	59	64	69	74	79	84	89	94	99
Hips	79	84	89	94	99	104	109	114	119	124

Finished measurements (cm/inches) – SN = side neck – OA = overarm										
Length blouse (cm)	58	58.5	59	59.5	60	60.5	61	61.5	62	62.5
SN to hem (inch)	22¾	23	23¼	23½	23¾	23¾	24	24¼	24½	24¾
Length dress (cm)	105	105.5	106	106.5	107	107.5	108	108.5	109	109.5
SN to hem (inch)	41¼	41½	41¾	42	42	42¼	42½	42¾	43	43¼
Sleeve OA (cm)	38	38.5	39	39.5	40	40.5	41	41.5	42	42.5
SN to cuff (inch)	15	15¼	15¼	15½	15¾	16	16¼	16½	16½	16¾
Bicep (cm)	34	35.5	37	38.5	40	41.5	43	44.5	46	47.5
on sleeve (inch)	13½	14	14½	15	15¾	16¼	17	17½	18	18¾
Bust (cm)	102	107	112	117	122	127	132	137	142	147
at underarm (inch)	40	42	44	46	48	50	52	54	56	68
Hem blouse (cm)	120	125	130	135	140	145	150	155	160	165
(inch)	47	49	51	53	55	57	59	61	63	65
Hem dress (cm)	112	117	122	127	132	137	142	147	152	157
(inch)	44	46	48	50	52	54	56	58	60	62

Fabric required – blouse										
120cm wide	2.20	2.20	2.20	2.20	2.20	2.50	2.50	2.50	2.50	2.50
150cm wide	1.70	1.70	1.70	1.70	1.70	1.90	1.90	1.90	1.90	1.90
48" wide	2½yd	2½yd	2½yd	2½yd	2½yd	2¾yd	2¾yd	2¾yd	2¾yd	2¾yd
60" wide	2yd	2yd	2yd	2yd	2yd	2¼yd	2¼yd	2¼yd	2¼yd	2¼yd

Fabric required – dress										
120cm wide	3.00	3.00	3.00	3.00	3.00	3.70	3.70	3.70	3.70	3.70
150cm wide	2.30	2.30	2.30	2.30	2.30	2.80	2.80	2.80	2.80	2.80
48" wide	3½yd	3½yd	3½yd	3½yd	3½yd	4¼yd	4¼yd	4¼yd	4¼yd	4¼yd
60" wide	2½yd	2½yd	2½yd	2½yd	2½yd	3¼yd	3¼yd	3¼yd	3¼yd	3¼yd

Fabric Suggestions Lightweight woven fabrics: fine count cotton, Tana lawn, silk, Tencel, viscose. **Also required** – 1m x 22mm elastic and matching sewing thread. Cover image – Rae wears The Tie Blouse in fine count cotton with The Wide-legged Trousers. On the mannequin: The Tie Dress in lightweight poly/viscose.