



MADE WITH LOVE™

THE COTTONY ONE™



HAT, GLOVE AND COWL SET

PATTERN No. M23070
CROCHET • EASY





THE COTTONY ONE HAT, GLOVE AND COWL SET

PATTERN No. M23070
CROCHET • EASY



SIZE

Hat

Finished Circumference

About 19 1/2 in. (49.5 cm)

Finished Length About 8 in. (20.5 cm)

Gloves

Finished Hand Circumference

About 8 in. (20.5 cm)

Finished Length About 8 in. (20.5 cm)

Cowl

Finished Circumference About 30 in. (76 cm)

Finished Length About 10 1/2 in. (26.5 cm)

MATERIALS

- LION BRAND® THE COTTONY ONE (Art. #3040)
 - #140 Primrose Hill 1 ball (A)
 - #122 Marvellous Mushroom 2 balls (B)
 - #098 Lychee White 1 ball (C)
- LION BRAND® stitch markers
- LION BRAND® large-eyed blunt needle

ADDITIONAL MATERIALS

Crochet hook size H-8 (5 mm)
Pom-pom maker

GAUGE

13 sc + 14 rows = about 4 in. (10 cm).
BE SURE TO CHECK YOUR GAUGE.

STITCH EXPLANATION

sc2tog (sc 2 sts together) (Insert hook in next st and draw up a loop) twice, yarn over and draw through all 3 loops on hook – 1 st decreased.

NOTES

1. All pieces are worked back and forth in rows and then seamed.
2. Yarn color is changed following Charts to form heart patterns. Read RS rows of Charts from right to left and WS rows from left to right.
3. To change yarn color, work last st of old color to last yarn over. Yarn over with new color and draw through all loops on hook to

complete st. Proceed with new color. When working hearts following Charts, do not cut old color until instructed. Carry color not in use along tops of sts of previous row and work sts of new color over the carried strand, enclosing it inside the fabric.

4. Right and Left Gloves are worked as mirror images of each other.

HAT

Brim

With A, ch 17.

Row 1 (RS): Sc in 2nd ch from hook and in each ch across – you will have 16 sc in this row.

Rows 2-63: Ch 1, turn, working in back loops only, sc in each st to last st, sc in both loops of last st and change to B.

Cut A, leaving a long tail for sewing.

Next row: With B, ch 1, work 64 sc evenly spaced along one long edge of brim – 64 sc.

Next row: With B, ch 1, turn, sc in each st across.

Begin Charted Heart Pattern

Place markers in the 24th and 41 st sts.

Notes:

1. You should have 23 sts before the first marked st, 18 sts between the 2 marked sts (including the marked sts), and 23 sts following the 2nd marked st.
2. Follow the Chart over the 18 sts between markers.
3. Move the markers up as each row is completed.

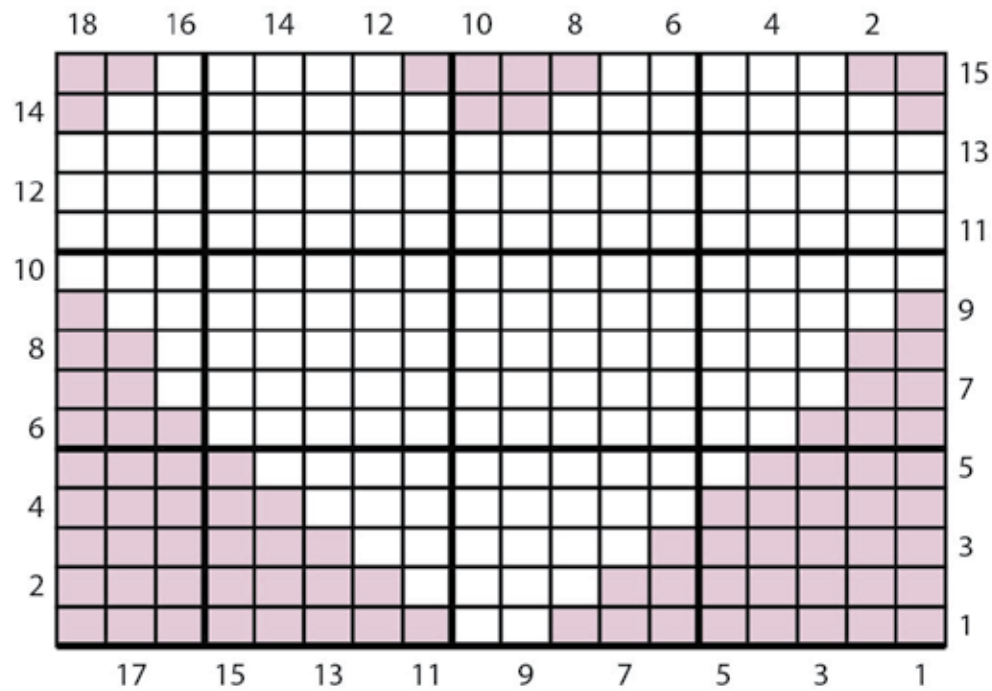
Row 1 (RS): With B, ch 1, turn, sc in each st to first marked st; sc in next 18 sts AND change yarn color following Row 1 of Hat Chart; with B, sc in each st to end of row.

Rows 2-15: With B, ch 1, turn, sc in each st to first marked st; sc in next 18 sts AND change yarn color following next row of Hat Chart; with B, sc in each st to end of row.

Cut C. Remove markers.

Work remainder of piece with B only.

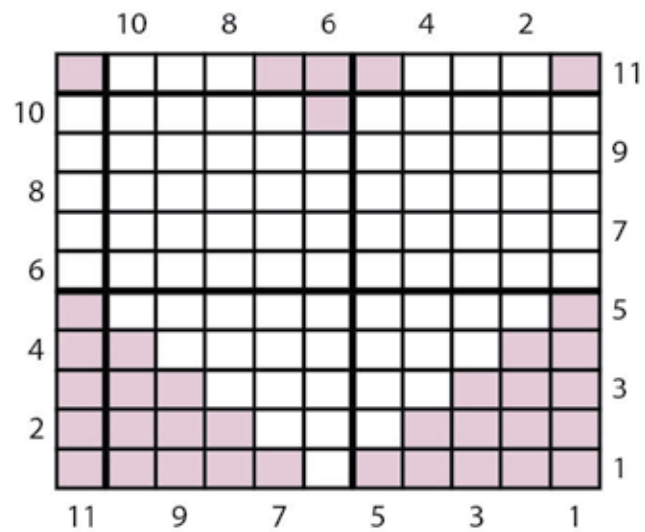
HAT CHART



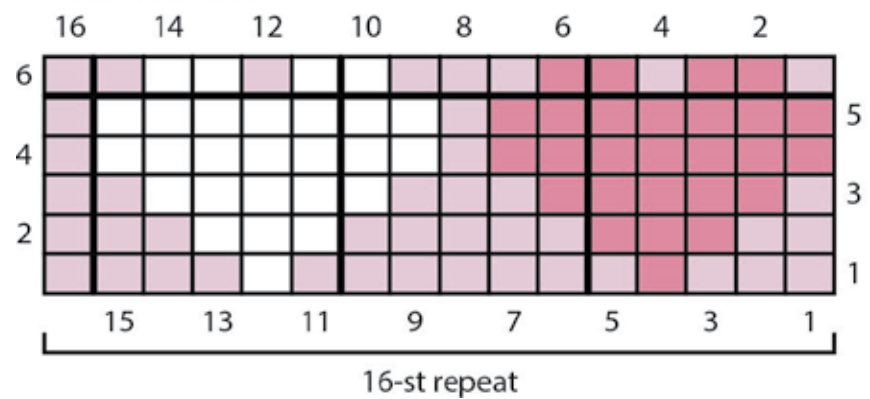
COLOR KEY

- #140 Primrose Hill (A)
- #122 Marvellous Mushroom (B)
- #098 Lychee White (C)

GLOVE CHART



COWL CHART



Rows 16-22: Ch 1, turn, sc in each st across.

Shape Top of Hat

Row 1 (RS): Ch 1, turn, * sc2tog, sc in next 2 sts; rep from * across – 48 sc.

Row 2: Ch 1, turn, * sc2tog, sc in next st; rep from * across – 32 sc.

Row 3: Ch 1, turn, * sc2tog; rep from * across – 16 sc.

Row 4: Ch 1, turn, sc in each next st across.

Row 5: Ch 1, turn, * sc2tog; rep from * across – 8 sts.

Fasten off, leaving a long tail for sewing.

Finishing Hat

Using yarn tails still attached, seam side edges of piece. Thread yarn tail through sts at top of Hat and pull to close opening. Knot securely.

Weave in ends.

With A, B, and C held together and following package instructions, make a large pom-pom. Tie pom-pom to top of Hat.

RIGHT GLOVE

Cuff Ribbing

With A, ch 9.

Row 1: Sc in 2nd ch from hook and in each ch across – you will have 8 sc in this row.

Rows 2-27: Ch 1, turn, working in back loops only, sc in each st to last st, sc in both loops of last st and change to B.

Cut A, leaving long tail for sewing.

Next row (RS): With B, ch 1, work 28 sc evenly spaced along a long edge of cuff – 28 sc.

Next 2 rows: With B, ch 1, turn, sc in each st across.

Shape Thumb Gusset

From WS, place a marker in the 13th and 16th sts to indicate increase locations.

Next 3 rows (Increase Rows): With B, ch 1, turn, sc in each st to first marked st, 2 sc in marked st, move marker to last sc made,

sc in next 2 sts, 2 sc in next marked st, move marker to first of last 2 sc made, sc in each st across – 34 sc when all increases have been completed.

Begin Charted Heart Pattern

Row 1 (RS): With B, ch 1, turn, sc in first st; sc in next 11 sts AND change yarn color following Row 1 of Glove Chart; with B, sc in each st across.

Continue to move increase location markers up as each row is worked, keeping 2 sts between the marked sts.

Row 2 (Increase Row): With B, ch 1, turn, sc in each st to first marked st, 2 sc in marked st, sc in next 2 sts, 2 sc in next marked st; with B, sc in each st to last 12 sts, sc in next 11 sts AND change yarn color following next row of Glove Chart; with B, sc in last st – 36 sc.

Row 3 (Increase Row): With B, ch 1, turn, sc in first st; sc in next 11 sts AND change yarn color following next row of Glove Chart; with B, sc in each st to next marked st, 2 sc in marked st, sc in next 2 sts, 2 sc in next marked st, sc in each st across – 38 sc. Remove increase location markers.

Row 4: With B, ch 1, turn, sc in each st to last 12 sts; sc in next 11 sts AND change yarn color following next row of Glove Chart; with B, sc in last st.

Form Thumb Opening

Row 5 (RS): With B, ch 1, turn, sc in first st; sc in next 11 sts AND change yarn color following next row of Glove Chart; with B, sc in next 2 sts, sk next 10 sts for thumb opening, sc in last 14 sts – 28 sc.

Row 6: With B, ch 1, turn, sc in each st to last 12 sts; sc in next 11 sts AND change yarn color following next row of Glove Chart; with B, sc in last st.

Row 7: With B, ch 1, turn, sc in first st; sc in next 11 sts AND change yarn color following next row of Glove Chart; with B, sc in each st across.

Rows 8-11: Rep Rows 6 and 7 twice. Cut C.

Rows 12-14: With B, ch 1, turn, sc in each st across.

Fasten off, leaving a long tail for sewing.

Thumb

Rnd 1 (RS): From RS, join B with sc in first skipped st of thumb opening, sc in remaining skipped sts around thumb opening; do not join, work in continuous rnds – 10 sc.

Place marker in last st made to indicate end of rnd. Move marker up as each rnd is completed.

Rnds 2-7: With B, sc in each st around. Fasten off.

LEFT GLOVE

Work same as Right Glove to Begin Charted Heart Pattern.

Begin Charted Heart Pattern

Row 1 (RS): With B, ch 1, turn, sc in each st to last 12 sts; sc in next 11 sts AND change yarn color following Row 1 of Glove Chart; with B, sc in last st.

Continue to move increase location markers up as each row is worked, keeping 2 sts between the marked sts.

Row 2 (Increase Row): With B, ch 1, turn, sc in first st; sc in next 11 sts AND change yarn color following next row of Glove Chart; with B, sc in each st to next marked st, 2 sc in marked st, sc in next 2 sts, 2 sc in next marked st, sc in each st across – 36 sc.

Row 3 (Increase Row): With B, ch 1, turn, sc in each st to first marked st, 2 sc in marked st, sc in next 2 sts, 2 sc in next marked st; with B, sc in each st to last 12 sts, sc in next 11 sts AND change yarn color following next row of Glove Chart; with B, sc in last st – 38 sc. Remove increase location markers.

Row 4: With B, ch 1, turn, sc in first st; sc in next 11 sts AND change yarn color following next row of Glove Chart; with B, sc in each st across.



Form Thumb Opening

Row 5: With B, ch 1, turn, sc in first 14 sts, sk next 10 sts for thumb opening, sc in next 2 sts; sc over next 11 sts AND change yarn color following next row of Glove Chart; with B, sc in last st – 28 sc.

Row 6: With B, ch 1, turn, sc in first st; sc in next 11 sts AND change yarn color following next row of Glove Chart; with B, sc in each st across.

Row 7: With B, ch 1, turn, sc in each st to last 12 sts; sc in next 11 sts AND change yarn color following next row of Glove Chart; with B, sc in last st.

Rows 8-11: Rep Rows 6 and 7 twice.
Cut C.

Complete same as Right Glove.

Finishing Gloves

Using yarn tails still attached to Gloves, seam side edges of Gloves and thumbs.
Weave in ends.

COWL

With B, ch 97.

Row 1 (RS): Sc in 2nd ch from hook and in each next ch to end – 96 sc.

Rows 2-16: Ch 1, turn, sc in each st across.

Begin Charted Heart Pattern

Row 1 (RS): Ch 1, turn, sc in each st across AND change yarn color following Row 1 of Cowl Chart, working the 16-st repeat 6 times across the row.

Rows 2-6: Ch 1, turn, sc in each st across AND change yarn color following next row of Cowl Chart, working the 16-st repeat 6 times across each row.

Cut A and C.

Rows 7 and 8: With B, ch 1, turn, sc in each st across; change to C in last st of Row 8.

Rows 9-12: With C, ch 1, turn, sc in each st across; change to A in last st of Row 12.

Rows 13-16: With A, ch 1, turn, sc in each st across; change to C in last st of Row 16.

Rows 17-24: Rep Rows 9-16.

Fasten off, leaving a long tail for sewing.

Finishing Cowl

Using yarn tails still attached to piece, seam side edges together.
Weave in ends.

ABBREVIATIONS

beg = begin(ning)

ch = chain

rep = repeat

RS = right side

sc = single crochet

sk = skip

st(s) = stitch(es)

WS = wrong side

Every effort has been made to produce accurate and complete instructions. We cannot be responsible for variance of individual makers, human error, or typographical mistakes.

©2023 Lion Brand Yarn Company, all rights reserved.