

Eternity Sidechair w/ upholstery

Coffee shell waste mixed with
recycled industrial plastic

The shell of the Eternity chair is made of Matek®. Innovative technology allows us to recycle fibre-based waste materials with recycled plastic waste. The Chair itself is a very comfortable, functional stackable chair with industrial and sculptural features. Eternity is designed for disassembly, meaning that the design allows each component in its purest form to recycle into new production circles.



Uphol. Seat
Re-wool 198 Grey



Full Front Uphol.
Re-wool 198 Grey



Uphol. Seat
Re-wool 218 Beige



Full Front Uphol.
Re-wool 218 Beige



Uphol. Seat
Re-wool 378 Rust



Full Front Uphol.
Re-wool 378 Rust



Designed by
Space Copenhagen

Item no.
11003 Eternity Sidechair,
– Uphol. Seat Re-wool 198 Grey*
11007 Eternity Sidechair,
– Uphol. Seat Re-wool 218 Beige*
11013 Eternity Sidechair,
– Uphol. Seat Re-wool 378 Rust*
11005 Eternity Sidechair,
– Full Front uphol. Re-wool 198 Grey*
11011 Eternity Sidechair,
– Full Front uphol. Re-wool 218 Beige*
11015 Eternity Sidechair,
– Full Front uphol. Re-wool 378 Rust*

**Variation possible due to
recycled materials*

Country of origin
Latvia

Materials
Coffee shell waste from BKI's coffee roasting process mixed with recycled industrial plastic waste from GROHE. Approx. 70% industrial plastic waste and 30% coffee shells. 20% recycled steel legs, gunmetal powder coated finish

Gliders
Hard plastic gliders installed as standard

Dimensions
W 53.5 cm D 55 cm H 87.5 cm SH 47,5 cm / W 21" D 21.6" H 34.4" SH 18,7"

Weight
Uphol Seat. 6,4 kg / 14,1 lbs
Full Front uphol. 6,6 kg / 14,7 lbs

Packaging 1 box / 2 pcs.

Maintenance
Please follow our material cleaning and care guide [here](#)

Environment
Indoor

mater

Mater Sustainability Factsheet

Eternity Sidechair
w/upholstery



Made from

Matek® and partly recycled steel

Item no. 11003

Coffee Waste Black – Uphol.
Seat Re-wool 198 Grey

CO₂ Footprint
49 kg CO₂e

**= 4330g
of waste materials**

Item no. 10007

Coffee Waste Black – Uphol.
Seat Re-wool 218 Beige

CO₂ Footprint
49 kg CO₂e

**= 4330g
of waste materials**

Item no. 10013

Coffee Waste Black – Uphol.
Seat Re-wool 378 Rust

CO₂ Footprint
49 kg CO₂e

**= 4330g
of waste materials**

*calculated using Målbar Software V. 2.942 on the 12.08.22

Item no. 11005

Coffee Waste Black – Full Front
uphol. Re-wool 198 Grey

CO₂ Footprint
58 kg CO₂e

**= 4330g
of waste materials**

Item no. 10011

Coffee Waste Black – Full
Front uphol. Re-wool 218 Beige

CO₂ Footprint
58 kg CO₂e

**= 4330g
of waste materials**

Item no. 10015

Coffee Waste Black – Full Front
uphol. Re-wool 378 Rust

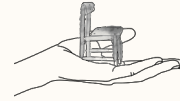
CO₂ Footprint
58 kg CO₂e

**= 4330g
of waste materials**

*calculated using Målbar Software V. 2.942 on the 12.08.22

Mater Sustainability Factsheet

Matek™



Matek®

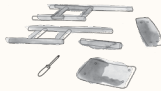
In alliance with large corporations, Mater has invented a patented technology that recycles their fibre and plastic waste. This resulting in five new unique materials that we've named Matek®.

Read more about Matek® [here](#)



Steel

Our Steel is composed of 20% recycled steel. Steel is a strong and light material with the quality that it can be processed in unlimited ways.



Repair for long lasting

Good products, are made to be used. To give the products the longest possible life, we want to make it easy for you to repair them yourself.

Contact our customer service for more info [here](#)

Mater Take-Back

We unhesitatingly offer to take all our furniture made from Matek® back at the end of its life to recycle it into new furniture.

Read more about how Mater Take-Back works [here](#)



Upholstery

Re-wool is a rich upholstery textile with a sustainable profile using 45% recycled wool. The textile is partly made by reusing scraps from Kvadrat's yarn spinners in the UK. Re-wool is designed by Margrethe Odgaard.



CO₂ Footprint

At Mater, we believe in the importance of transparency. By doing Life Cycle Assessments (LCA) on our furniture, we can analyse the total climate emission for each of our product's lifespan.

Read more about how we measure the CO₂ footprint [here](#)

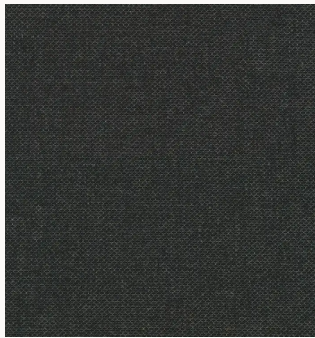
mater

Other Upholstery Options

For fabric requests beyond the 3 standard colors in our assortment, there is a minimum order quantity of 25 pieces. There will be an expected production lead time of 8 weeks for fabrics from Kvadrat, Gabriel or Sørensen Leather. Request on fabrics from other vendors will be handled case by case – please reach out to your local Mater contact.

Prices

Orders will be quoted with an additional price per chair covering only extra cost for the textile/leather.

Chosen textiles from Kvadrat**Re-wool 198**

Composition:
45% recycled wool, 45%
new wool worsted and
10% nylon

Re-wool 218

Composition:
45% recycled wool, 45%
new wool worsted and
10% nylon

Re-wool 378

Composition:
45% recycled wool, 45%
new wool worsted and
10% nylon
